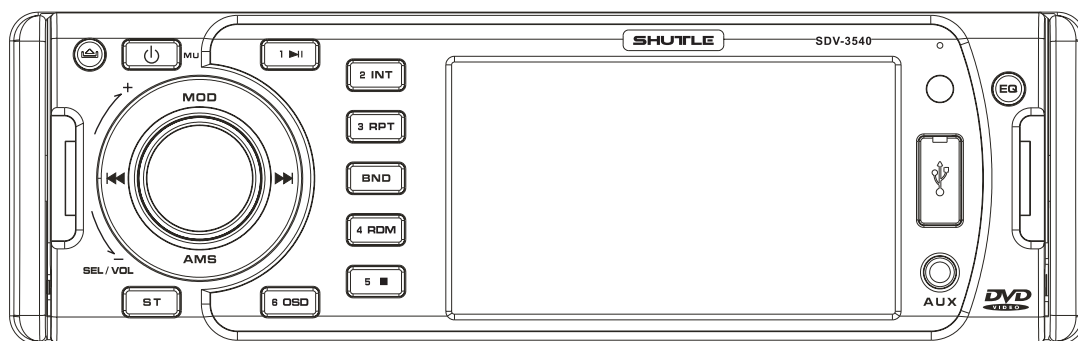


# SHUTTLE

## Service Manual

### SDV-3540



Мультимедийный проигрыватель

Руководство по установке и эксплуатации



# CONTENTS

---

Specification.. . . . .	02
Disassembly Instructions. . . . .	03
Operation Check. . . . .	04
Deck. . . . .	05
Alignment and adjustment. . . . .	06
Troubleshooting. . . . .	08
Printed Circuit Boards. . . . .	09
Wiring Diagram. . . . .	18
Electrical Parts List. . . . .	19
Exploded View. . . . .	27
Mechanical Parts List. . . . .	30
Schematic Diagrams. . . . .	33

# SPECIFICATION

---

## General

Power Supply Requirements:	DC 14.4V, Negative Ground
Load Impedance:	4 ohms
Maximum Output Power:	25W x 4(CH)
Chassis Dimensions:	178 x 163x 50mm (W x D x H)

## DVD Deck Section

Discs Played:	DVD, MPEG4, DIVX, VCD 1.0/2.0/3.0, MP3 WMA, CD, CD-R, CD-RW, Picture-CD
Video system:	AUTO/PAL/NTSC
Mounting Angle:	0° ~ 3°

## Video Section

Video System:	4:3 Letter Box, 4:3 Pan Scan, 16:9
Video Output Level:	1.0V p-p 75 ohms

## Audio Section

Maximum Output LEVEL:	2Vrms (+ 3 dB)
Frequency Response:	20~20KHz
Signal-to-noise Ratio:	65dB
Separation:	60dB

## FM Tuner Section

Tuning Range:	87.5 - 108MHz
IF	10.7MHz
Usable Sensitivity (-30dB)	15dB
Signal-to-noise Ratio:	60dB
Stereo Separation:	30dB (1KHz)
Frequency Response:	30 ~ 15000 Hz

## AM Tuner Section

Tuning Range:	522 - 1620KHz
IF	450KHz
Usable Sensitivity (-20dB) :	28dB

NOTE: Design and specifications are subject to change without notice for improvements.

# DISASSEMBLY INSTRUCTIONS

---

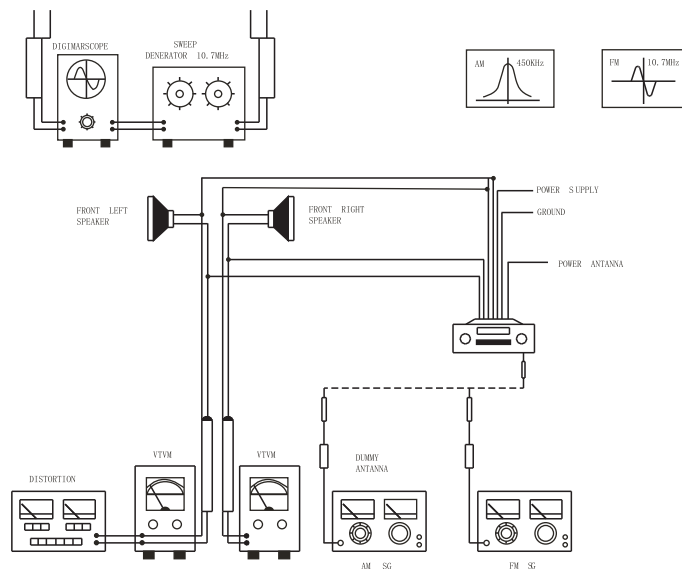
- 1. Mounting Box:** Slide out the mounting box in parallel.
- 2. Top cover:** Release screw at the back of top cover, and pull out the cover.
- 3. Bottom Cover:** Turn over the unit to release the screws at the back of bottom cover and one the top surface. Pull out the cover.
- 4. Disassemble the Panel:**  
Pull out the Front panel.  
Release the left side and right side screws attached to with the base.  
Pull the base out of the unit.
- 5. Disassemble the mechanism deck:**  
There are two screws to lock the mechanism deck at front ,Unscrew both of them.  
Remove the solder from fixed wires on the main, and remove the deck.
- 6. Disassemble the key board :**  
Release four screws .  
Remove the back panel .  
Then remove the key board.
- 7.**Unscrew the left side bracket and the right side bracket. There are two screw on each side.
- 8. Disassemble the main board :**
- 9.**Unscrew two screw at the leaf bracket  
remove the solder from the Tuner,and main board.  
Uncrew two screw ar the ANT.Remove the solder from fixed wires.  
Unscrew two crew at the Heatsink.  
Remove the main board.

# OPERATION CHECK

## GENERAL SPECIFICATIONS OF SIGNAL

Standard frequency	AM	1000 KHz (600, 1400 KHz)
	FM	98.0 MHz (90.0, 106.0 MHz)
Signal output	AM	74 dB/uV
	FM	60 dB/uV
Modulation	AM	1 kHz 30%
	FM mono	1 KHz 22.5KHz
AF output level	AM/FM	
Power source voltage	DC 14.4 V (backup voltage is the same as this )	
AF load impedance	4 ohm pure resistance	
Balance	Mechanical center	
Tone	Mechanical center	

The signal strength read in this section is voltage on the antenna.



**Note :** Use an RF generator for the AM band and a sweep generator for the FM band.



# ADJUSTMENT

---

## FM IF/RF ADJUSTMENT

### Equipment Required

FM IF/RF signal generator  
 Oscilloscope  
 Solid-state voltmeter (SSVM)  
 Frequency counter  
 Regulated DC power supply  
 DC digital voltmeter  
 Distortion meter

### FM IF and RF Alignment Using FM Signal Generator

**Note :** Press the radio power switch to turn on the radio. Signal generator output must be kept as low as possible to avoid overload and clipping.

Setup	Generator Coupling	Generator	Display Setting	Indicator Coupling	Adjust ment	Remarks
IF	FM RF signal generator to ANT i/p	10.7 MHz sweep output 60 dB/uV	98.0 Mhz	Connect oscilloscope to Ic1 pin 3 & ground	T1	Adjust so that maximum AF output power and minimum distortion.
RF Low High	Signal generator to antenna receptacle	90MHz Int 1 KHz 22.5KHz mod. output 30dB/uV 106MHz Int 1 KHz 22.5 KHz mod. output 30 dB/uV	90 MHz 106 MHz	SSVM across speaker	C3 L1	Adjust AF output power for maximum

# ADJUSTMENT

---

## AM /RF ADJUSTMENT

### Equipment Required

- >AM/RF signal generator
- >Oscilloscope
- >Solid-state voltmeter (SSVM)
- >Frequency counter
- >Regulated DC power supply
- >DC digital voltmeter
- >Distortion meter

### AM/RF and RF Alignment Using AM Signal Generator

**Note :** Press the radio power switch to turn on the radio. Signal generator output must be kept as low as possible to avoid overload and clipping.

Setup	Generator Coupling	Generator	Display Setting	Indicator Coupling	Adjust ment	Remarks
RF	Signal generator to antenna receptacle	600 KHz Int 1 KHz 30% mod. Output 74 dB/uV	600 Khz	SSVM across speaker	C1	Adjust AF output power for maximum
RF Cont.	Signal generator to antenna receptacle	1400 KHz Int 1 KHz 30% mod. 74 dB/uV	1400 Mhz	SSVM across speaker	L3	Adjust AF output power maximum



# TROUBLE SHOOTING

---

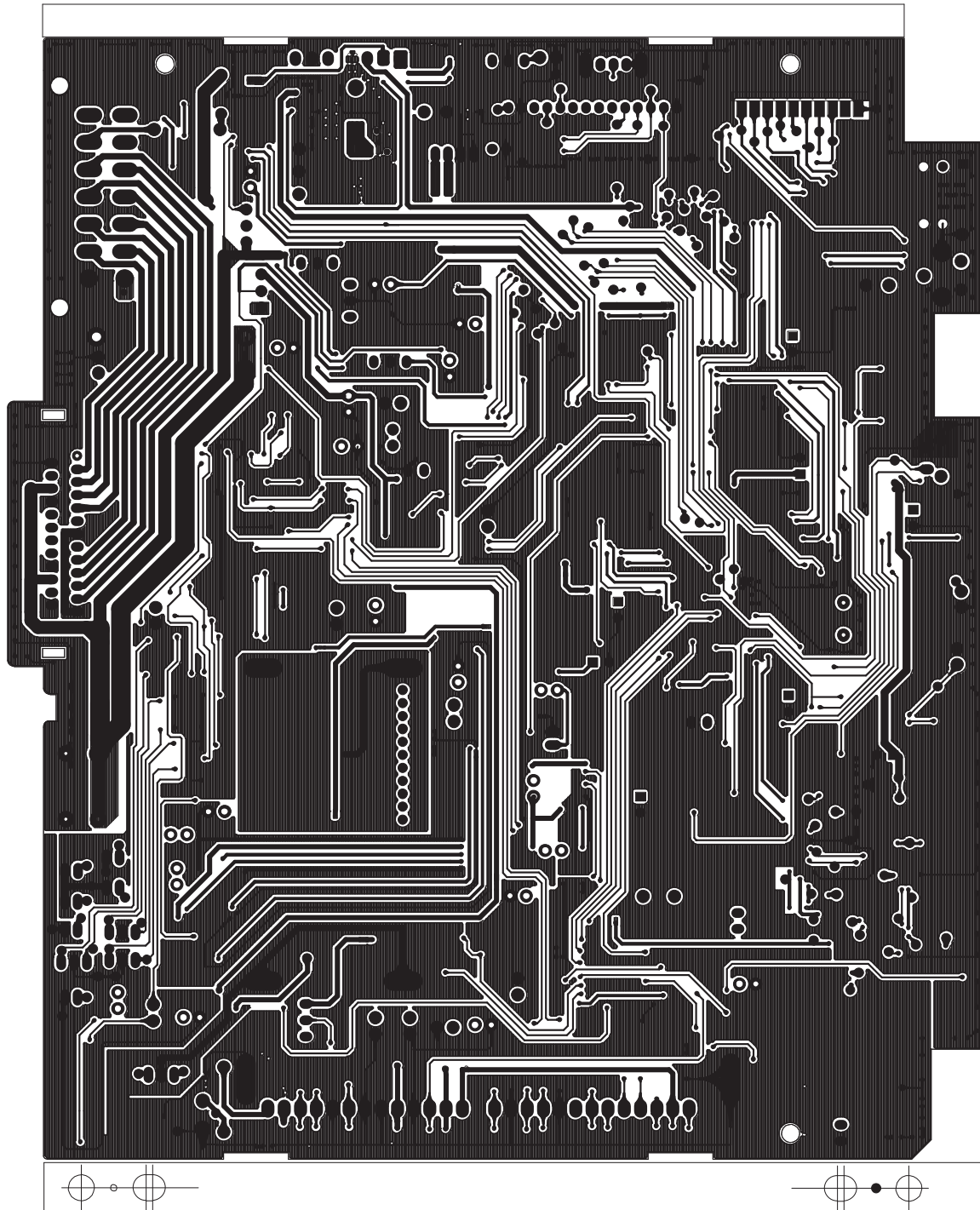
Before going through the check list, check wiring connection. If any of the problems persist after checklist has been made, consult your nearest service dealer

Symptom	Causes	Solution
No Power	The car ignition key not been switched on	If the power supply is properly connected to the car accessory terminal, switch the ignition key to ACC
	The fuse is blown	Replace a new fuse
CD Cannot Be Loaded or Ejected	A CD is already inside the player slot	Remove the CD from the player and insert the new one
	Inserting the CD in reverse direction	Insert the CD with the label facing up
	The CD is extremely dirty or defected	Clean the CD or try to play a new one
	Temperature inside the car is too high	Cool off until the ambient temperature return to normal
	Condensation	Leave the player off for an hour or so and try again
No Sound	Volume is at minimum	Adjust volume to desired level
	Wiring is not properly connected	Check wiring connection
Sound Skipping	The installation angle is more than 30°	Adjust the installation angle to less than 30°
	CD is extremely dirty or Defected	Clean the CD or try to play a new one
The Operation Keys Do Not Work	The built-in microcomputer is not operating properly due to Interference	Press the RESET button or reinstall the front panel properly
The Radio or Automatic Selection Does Not Work	The antenna cable is not connected correctly	Connect the antenna cable correctly
	The signals are too weak	Select the station manually

# PRINTED CIRCUIT BOARDS

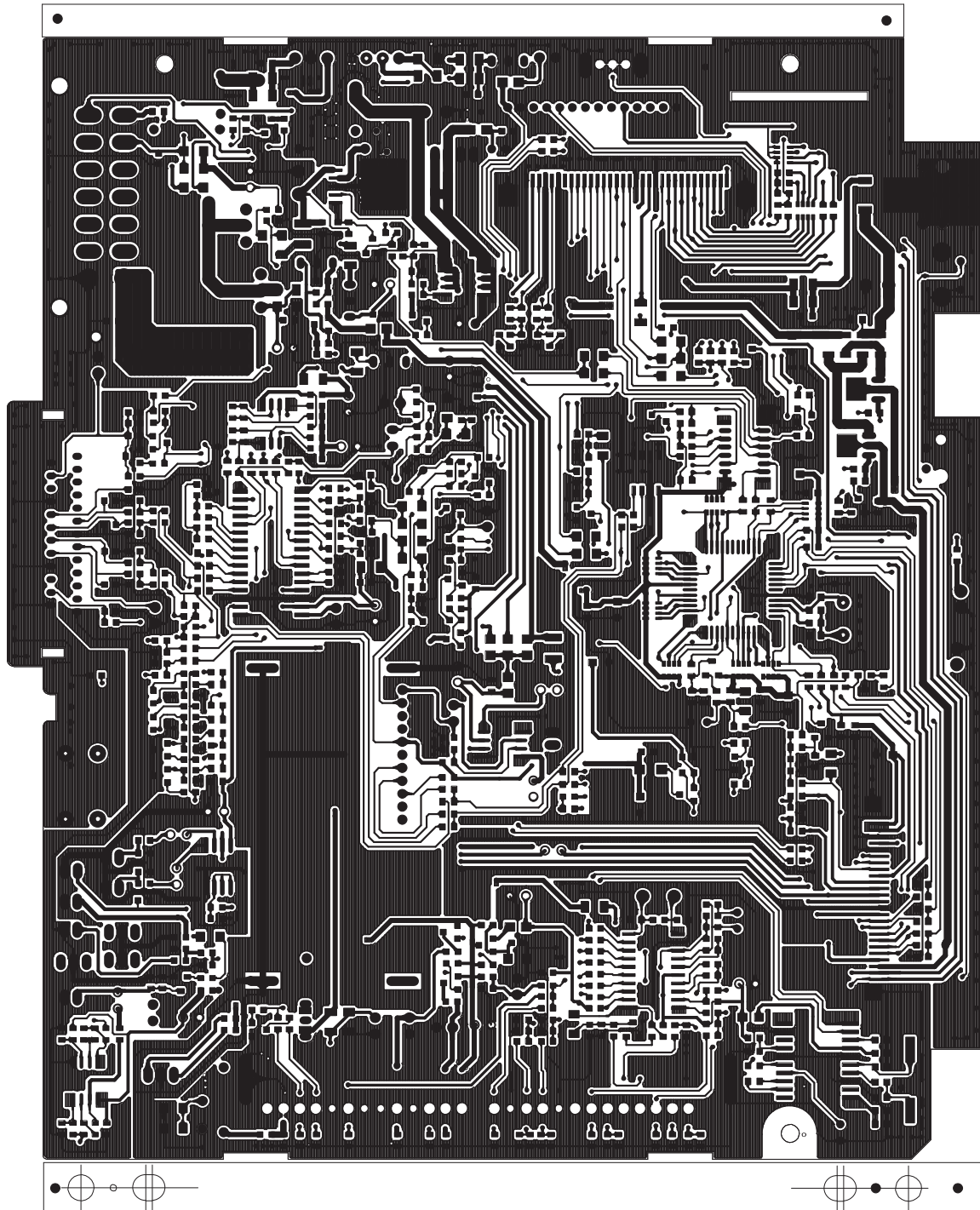
---

## MAIN BOARD ( LAYOUT )

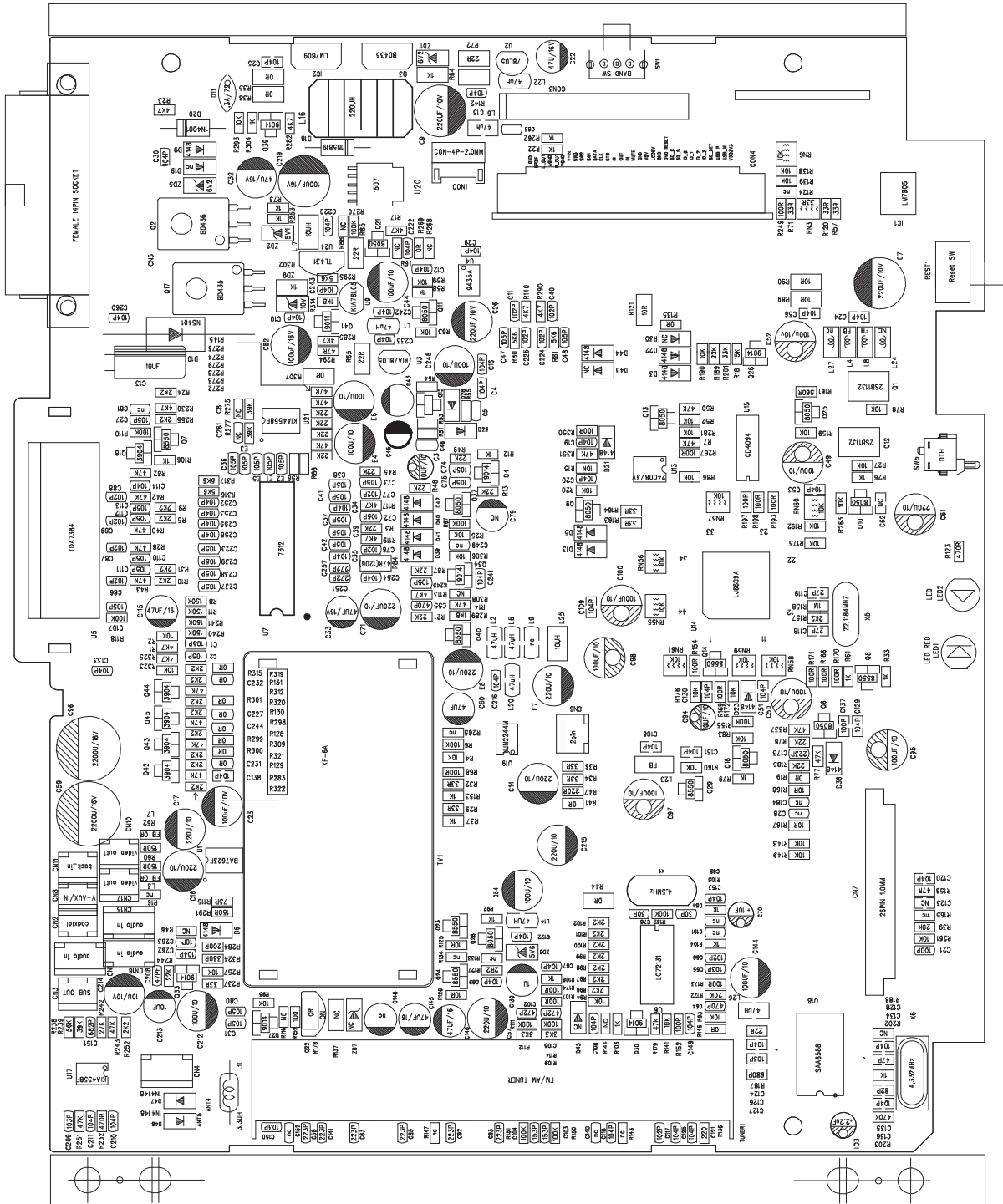


# PRINTED CIRCUIT BOARDS

---



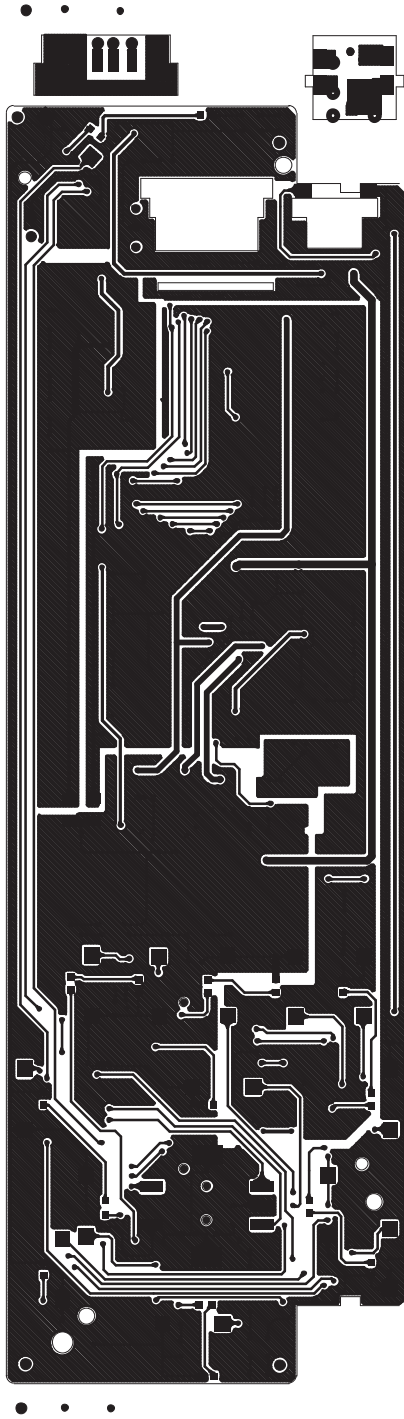
# PRINTED CIRCUIT BOARDS



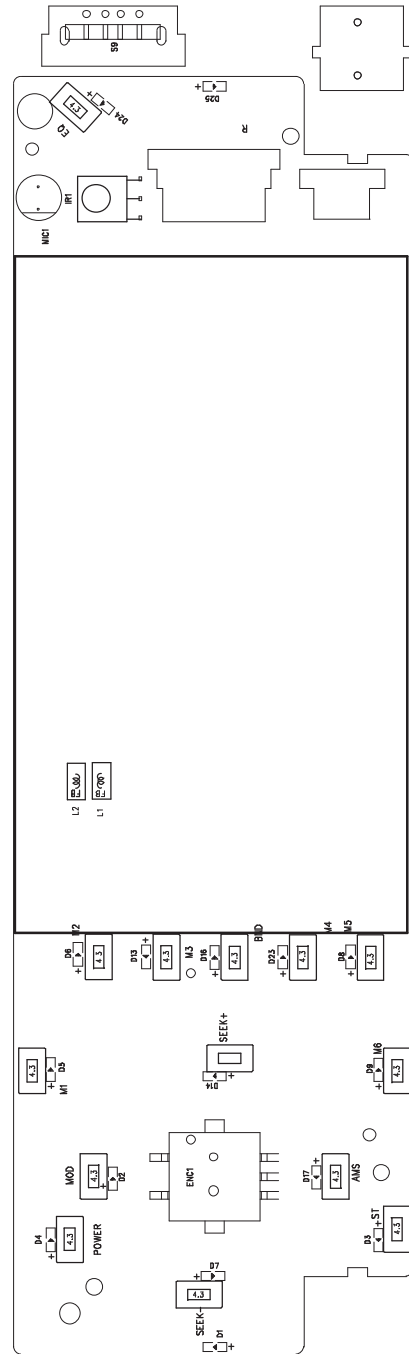


# PRINTED CIRCUIT BOARDS

## Key-Copper-Top



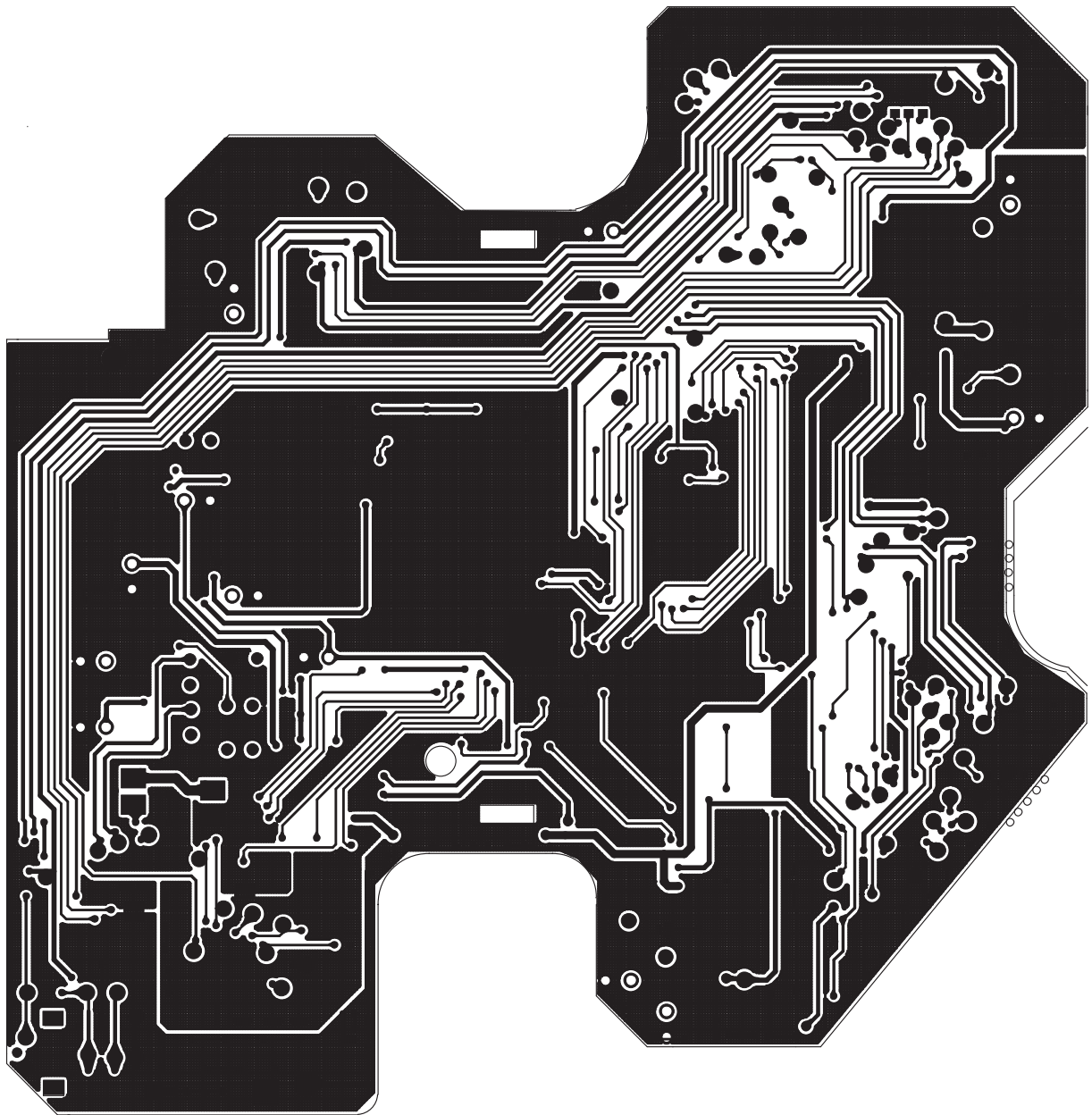
## Key-Silkscreen-Top



# PRINTED CIRCUIT BOARDS

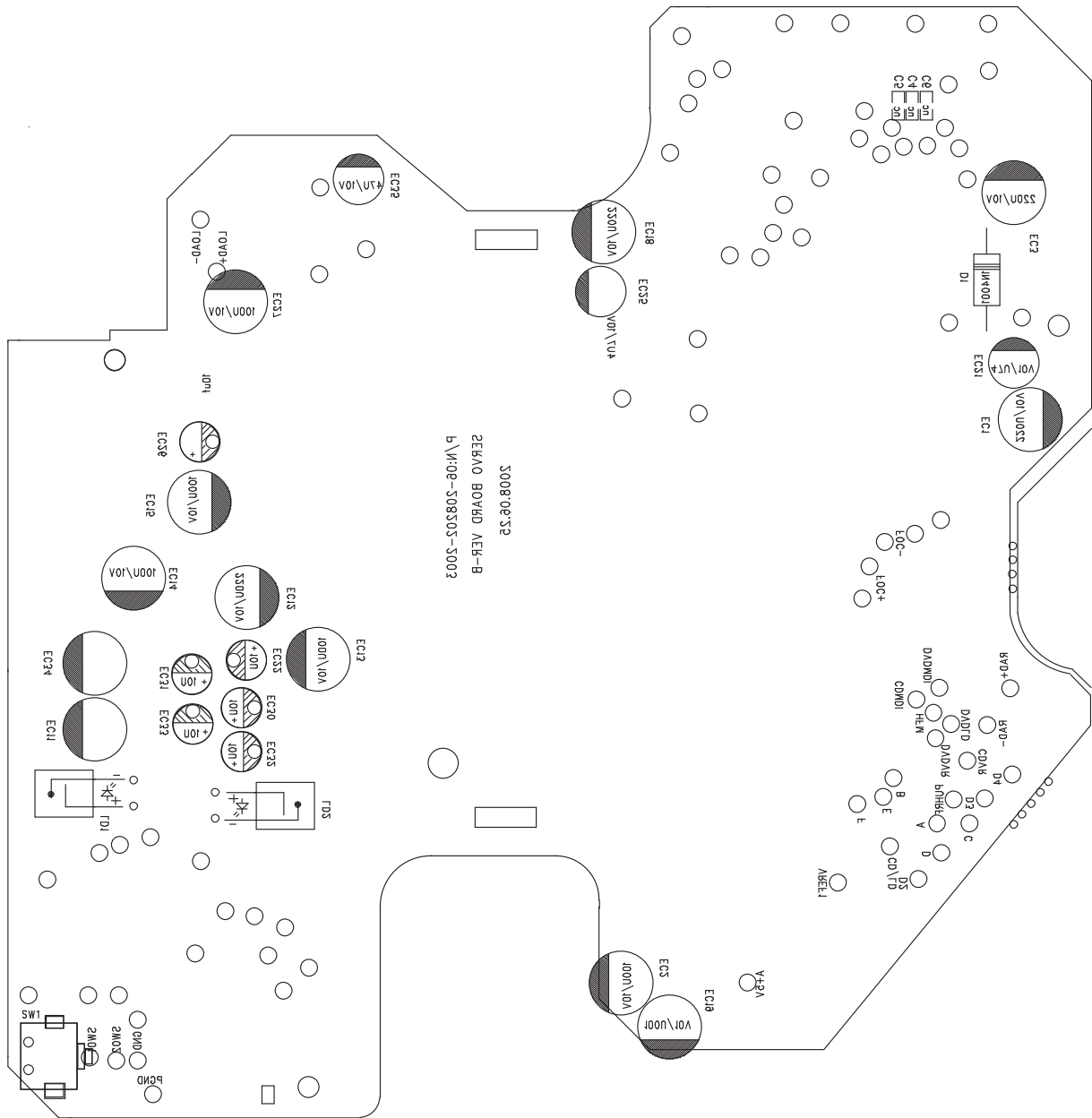
---

## SERVO BOARD



# PRINTED CIRCUIT BOARDS

## SERVO BOARD

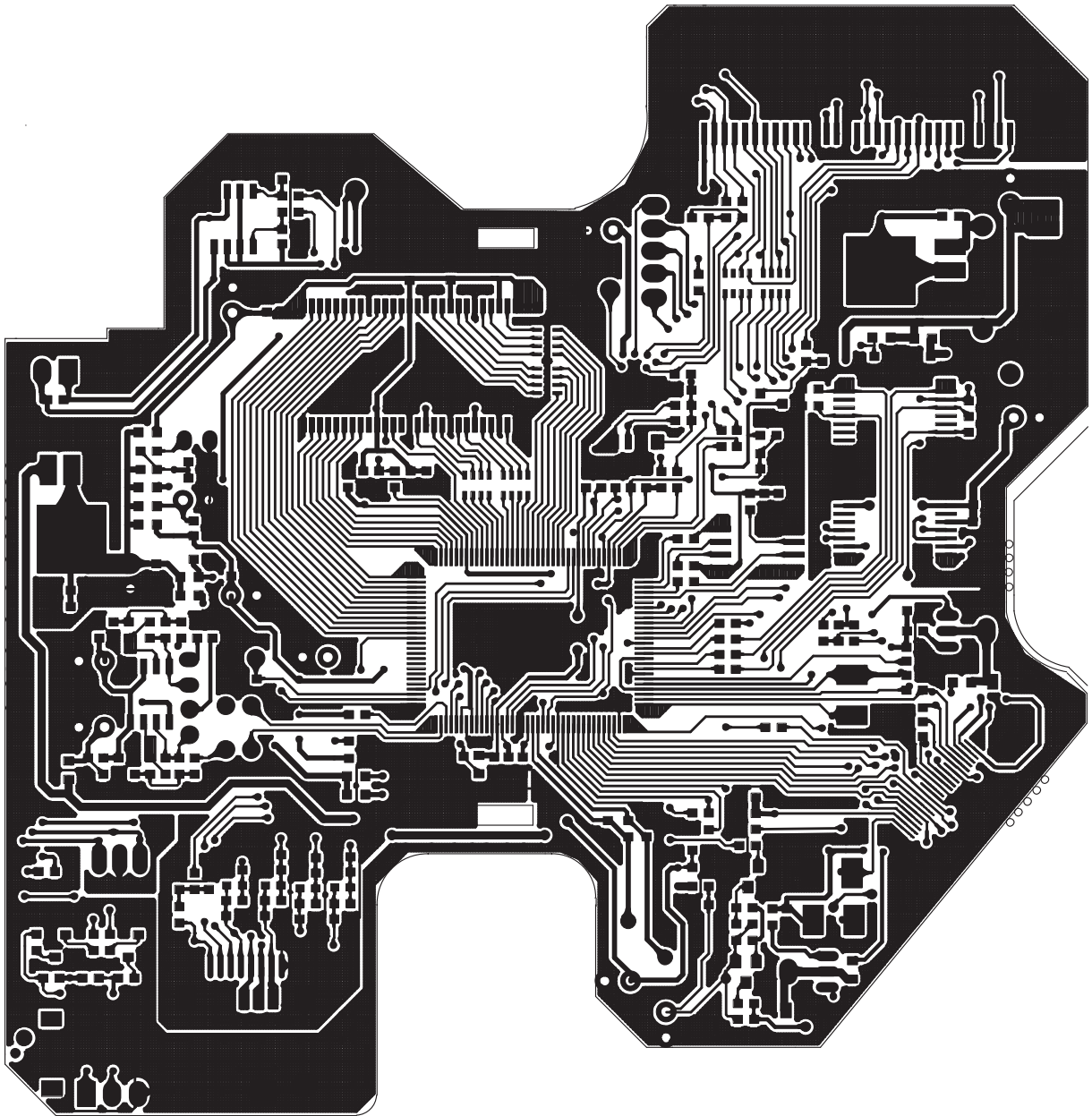




# PRINTED CIRCUIT BOARDS

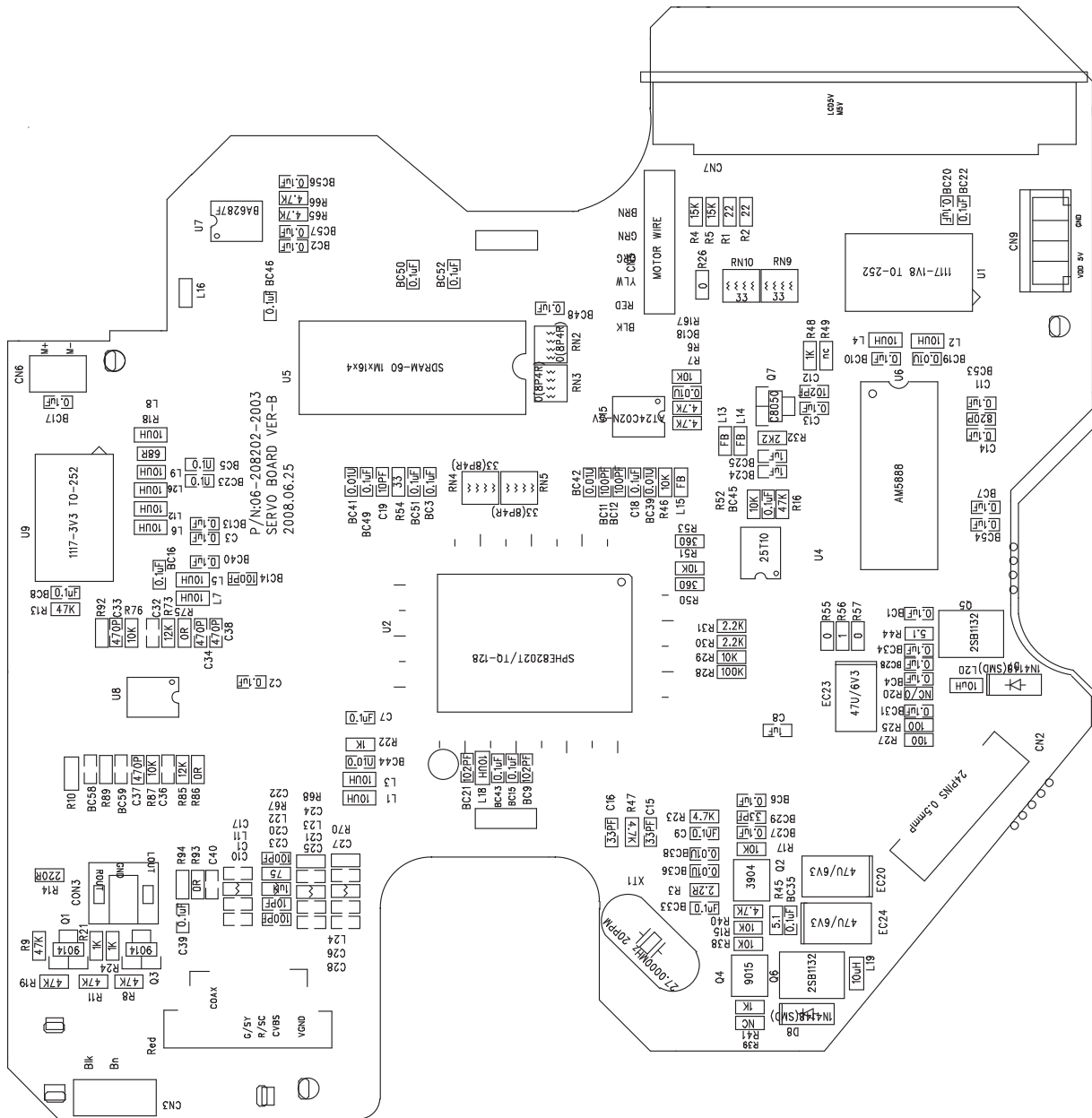
---

## SERVO BOARD



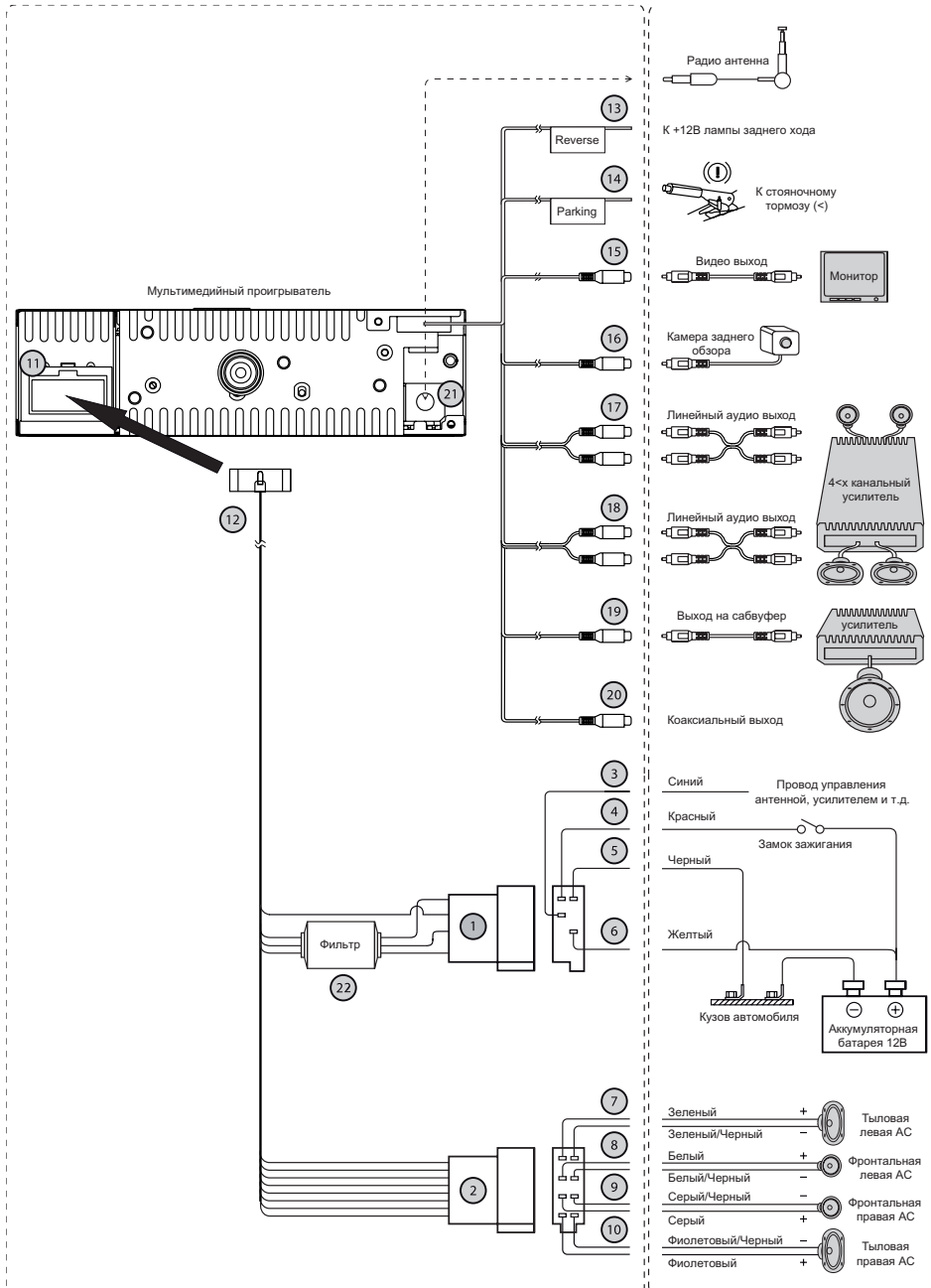
# PRINTED CIRCUIT BOARDS

## SERVO BOARD



# WIRING DIAGRAM

## WIRE CONNECTION DIAGRAM



## Electical Parts List

06-109188-2001-0S-N	MB9188T (4*25W+TFT+SUB+ISO插) (统宝屏)
04-022114-0100	晶体22.1184MHZ 20PF. ±30PPM
06-C08198-2000	SD卡板 PY-8198D-SDB PCB, HP=1.mm, FR-4 83.97*92.7/4pcs 双面板
07-113060-0101	热敏电阻 300mA 60V T60-030
08-210222-1029	电解电容 16V 2200UF ±20% 10*20
10-080436-0201	插件三极管 2SB436 (塑封)
10-090435-0201	插件三极管 2SD435 TO-251 40V, 3A, 10W(塑封)
11-020431-0700	IC TO-92, TL431
11-037388-0600	IC TDA7388
11-047809-0600	直插稳压 IC LM7809 TO-220
11-478L05-0600	集成电路 TO-92 NJM78L05
12-114001-0000	普通二极管 IN4001
12-115401-0000	普通二极管 IN5401
12-115819-0120	插件二极管 IN5819
14-200013-2570	单掷开关 PITH=2.0 4.4*8.6
14-300112-1000	推按开关 DTH
14-500512-1500	轻触开关 RESET
16-214221-6400	扼流圈 220uH/3A, 14X6.6X13mm
17-010303-1101	LED灯 3Φ 红发红 普亮(主机) 主机用
17-030303-0101	插件LED灯(蓝色)3.0mm
19-010091-1001	SD卡座 SDBMF-009XXBOXZ
19-214021-2201	弯脚插座 2PIN弯脚, 间距2.0mm
21-014250-0072	输出线back input video line (紫色)250MM±10 地线 0.12MM*32股 正线0.16MM*7股(黄铜线)
21-200300-0051	输出线coaxial output line (灰色)250MM±10 地线 0.12MM*32股 正线0.16MM*7股 (黄铜线)
21-200300-0059	输出线video output line (灰色)250MM±10 地线 0.12MM*32股 正线0.16MM*7股 (黄铜线)
21-306250-1010	RCA输出线(棕色) 250MM±10 地线0.12MM*32股 正线 0.16MM*7股(黄铜线)
21-306250-1011	RCA输出线(灰色) 250MM±10, 地线0.1MM*50股 正线 0.13MM*7股(黄铜线)
21-014250-0071	SW输出线 250MM±10 地线0.12MM*32股 正线0.16MM*7股
33-040340-0001	天线插座 ANT
34-010114-0700	输出线插座 14PIN
34-020204-0520	4PIN弯针, CD. DECK. 间2.0MM
06-600001-1603-1N	输出线: PCB板(火牛板) 39X47X1.67 9138D (带ISO)
06-600001-1600	PCB板(火牛板) 39X47X1.67
08-010102-2000	电解电容 1000uF/25V Φ10X17MM
12-115401-0000	普通二极管 IN5401
16-124001-0000	扼流圈 E124(15A)
19-202010-0002	保险座 U型 MF-04

## Electical Parts List

19-202010-0005	支架 FUSE (大号)
22-100010-0003	FUSE 1A, DC250, $\phi$ 4.8X20MM
22-100150-0002	FUSE 15A, DC250V, $\phi$ 5.6X30MM
34-010914-9138	输出线14P power output line(不带火牛, 不带FUSE) 9138D(ISO)
06-109188-2001-1S-N	MB9188T(4*25W+TFT+SUB+ISO插)(统宝屏)外发
06-109188-2001	主板 PY-9188D-MB PCB , FR-4, 双面板 186.7*150.5*1.2mm/1
07-080000-0800	贴片电阻 0 5% 1206 1/4W
07-080000-9900	贴片电阻 0 5% 0603
07-080100-0800	贴片电阻 SMD 10R 1206 5%
07-080100-9900	贴片电阻 10 5% 0603
07-080101-9900	贴片电阻 100 5% 0603
07-080102-0800	贴片电阻 SMD 1K 1206 1/4W 5%
07-080102-9900	贴片电阻 1K 5% 0603
07-080103-9900	贴片电阻 10K 5% 0603
07-080103-9940	贴片排阻 10K 5% 0603
07-080104-9900	贴片电阻 100K 5% 0603
07-080105-9900	贴片电阻 1M 5% 0603
07-080151-9900	贴片电阻 150 5% 0603
07-080153-9900	贴片电阻 15K 5% 0603
07-080182-9900	贴片电阻 1K8 5% 0603
07-080201-9900	贴片电阻 200 5% 0603
07-080203-9900	贴片电阻 20K 5% 0603
07-080220-0800	贴片电阻 SMD 22R 1206 1/4W 5%
07-080222-9900	贴片电阻 2K2 5% 0603
07-080223-9900	贴片电阻 22K 5% 0603
07-080330-9900	贴片电阻 33 5% 0603
07-080330-9940	贴片排阻 33 5% 0603
07-080331-9900	贴片电阻 330 5% 0603
07-080332-9900	贴片电阻 3K3 5% 0603
07-080333-9900	贴片电阻 33K 5% 0603
07-080470-0800	贴片电阻 SMD 47R 1206 1/4W 5%
07-080470-9900	贴片电阻 47 5% 0603
07-080471-9900	贴片电阻 470 5% 0603
07-080472-9900	贴片电阻 4K7 5% 0603
07-080752-9900	贴片电阻 7K5 5% 0603
07-080473-9900	贴片电阻 47K 5% 0603
07-080683-9900	贴片电阻 68K 5% 0603
07-080562-9900	贴片电阻 5K6 5% 0603

## Electical Parts List

07-080750-9900	贴片电阻 75 5% 0603
07-080822-9900	贴片电阻 8K2 5% 0603
08-216100-5022	电解电容 10UF/50V ±20% φ 5X5mm 排带2.5MM脚距, 平底部伸出
08-216101-0029	电解电容 100UF/10V ±20% φ 5X5mm 排带2.5MM脚距, 平底部伸出
08-216101-1029	电解电容 100UF/16V ±20% φ 6.3X5mm 排带2.5MM脚距, 平底部伸出
08-216221-0029	电解电容 220UF/10V ±20% φ 6.3*5mm 排带2.5MM脚距, 平底部伸出
08-216470-1029	电解电容 47UF/16V ±20% φ 5X5mm 排带2.5MM脚距, 平底部伸出
09-088100-1300	贴片电容 10P/50V 0603 ±5%
09-088101-1300	贴片电容 100P/50V 0603 ±5%
09-088102-1300	贴片电容 102/50V 0603 ±10%
09-088471-1300	贴片电容 470P/50V 0603 ±5%
09-088104-1300	贴片电容 104/25V 0603 ±10%
09-088105-1300	贴片电容 105/16V 0603 ±10%
09-088153-1300	贴片电容 153/50V 0603 ±10%
09-088223-1300	贴片电容 223/50V 0603 ±10%
09-088272-1300	贴片电容 272/50V 0603 ±10%
09-088270-1300	贴片电容 27P/50V 0603 ±5%
09-088472-1300	贴片电容 472/50V 0603 ±10%
09-088221-1300	贴片电容 220P/50V 0603 ±5%
10-021132-1280	贴片三极管 SOT-89, 2SB1132
10-063904-0170	贴片三极管 SOT-23, 2NS3904
10-178050-7170	贴片三极管 SOT-23, C8050
10-178550-7170	贴片三极管 SOT-23, C8550
10-179014-7170	贴片三极管KTC9014S-PTK/P, SOT-23
11-150750-0400	集成电路 SOP-252-5, 1507-50
11-004094-0400	IC SOP-16 CD4094
11-047805-0H00	IC LM7805 TO-252
11-009435-0400	集成电路 SOP-8, 9435A
11-092244-0400	IC SOP-8, NJM2244
11-024C08-0400	IC SOP-8 24C08N 3V3
11-464558-0400	IC KIA4558F SOP8 SMD贴片
11-002312-0401	音频处理IC TM 2312
11-506608-5006	LJ 6608T-TQ-EL+MUTE功能 MCU (数字IC6621) 统宝16:9
11-BA7623-0400	IC SOP-8, BA7623
12-214148-0011	贴片二极管 IN4148 1206 圆柱形
12-114001-0011	贴片二极管 IN4001 SOD-106
12-300051-0021	贴片稳压二极管 5.1V (4.95V~5.15V) 1206
12-300062-0021	贴片稳压二极管 6.2V (6.05V~6.25V) 1206
12-300100-0021	贴片稳压二极管 10V (9.90V~10.02V)

## Electical Parts List

16-0A1470-0000	贴片电感 0805 47uH
16-0A2100-0000	贴片电感 1210 10uH
16-A00000-1003	贴片磁珠 FB 0Ω 0603
16-AA2000-0000	贴片磁珠 1206 FB320
34-010332-0320	贴片插座 32PIN, 间距1.0mm, up port
34-010326-0321	贴片插座 26P 1.0MM PITCH
06-000SUB-9138-1-N	PY9138D SUBWOOFRE PARTS
07-080103-9900	贴片电阻 10K 5% 0603
07-080154-9900	贴片电阻 150K 5% 0603
07-080273-9900	贴片电阻 27K 5% 0603
07-080222-9900	贴片电阻 2K2 5% 0603
07-080223-9900	贴片电阻 22K 5% 0603
07-080330-9900	贴片电阻 33 5% 0603
07-080393-9900	贴片电阻 39K 5% 0603
07-080473-9900	贴片电阻 47K 5% 0603
07-080471-9900	贴片电阻 470 5% 0603
07-080563-9900	贴片电阻 56K 5% 0603
08-216100-5022	电解电容 10UF/50V ±20% φ5X5mm 排带2.5MM脚距, 平底部伸出
08-216101-0029	电解电容 100UF/10V ±20% φ5X5mm 排带2.5MM脚距, 平底部伸出
09-088104-1300	贴片电容 104/25V 0603 ±10%
09-088470-1300	贴片电容 47P/50V 0603 ±5%
09-088103-1300	贴片电容 103/50V 0603 ±10%
09-088682-1300	贴片电容 682/50V 0603 ±10%
10-179014-7170	贴片三极管KTC9014S-PTK/P, SOT-23
11-464558-0400	IC KIA4558F SOP8 SMD贴片
12-214148-0011	贴片二极管 IN4148 1206 圆柱形
06-309188-2003-0-N	6621高频头部分(DVD/TFT用)插件(9188DT)
04-040003-0100	插件晶体 4.000MHZ 30PPM S型
08-210101-1029	电解电容 16V 100UF ±20% 6.3*5
16-600561-0001	插件色环电感 560uH 0307
19-115121-1201	12PIN 弯针 间距2.5MM
21-080071-0200	屏蔽线 70MM
06-309188-2003-1-N	6621高频头部分(DVD/TFT用)外发件
06-309188-2003	PY-9188T-TUNE 194.4*147.9*1.2MM/16
07-080101-9900	贴片电阻 100 5% 0603
07-080220-9900	贴片电阻 22 5% 0603
07-080820-9900	贴片电阻 82 5% 0603
07-080472-9900	贴片电阻 4K7 5% 0603
07-080474-9900	贴片电阻 470K 5% 0603
09-088180-1300	贴片电容 18/50V 0603 ±5%
09-088100-1300	贴片电容 10P/50V 0603 ±5%
09-088102-1300	贴片电容 102/50V 0603 ±10%

## Electical Parts List

09-088103-1300	贴片电容 103/50V 0603 ±10%
09-088104-1300	贴片电容 104/25V 0603 ±10%
09-088105-1300	贴片电容 105/16V 0603 ±10%
09-088220-1300	贴片电容 22P/50V 0603 ±5%
09-088568-1300	贴片电容 5.6P/50V 0603 ±5%
09-088224-1300	贴片电容 224/25V 0603 ±10%
12-214148-0011	贴片二极管 IN4148 1206 圆柱形
11-006621-0800	TEF 6621 SOT-32
16-000338-0000	贴片电感 3.3UH SMD 1206
16-0A1188-1000	贴片电感 1.8UH 0603
16-0A1228-1000	贴片电感 220NH 603
16-0A1279-1000	贴片电感 0603 270nH
16-0A1479-1000	贴片电感 0603 470nH
06-309188-2002-0A-N	前板PY-9188T-KB(TPO)统宝屏 通用绿色
13-118000-2101	VOL 贴片 编码器
19-116262-1401	26P贴片插座(公插)
19-210031-0401	A/V贴片插座 Φ3.5mm, AV+L+R
19-220041-1002	USB插座 USB-A06-4DIP(黑色)大头插座
21-317230-0060	AV连接线 AV+L+R 230mm±10 地线0.1MM*21股, 正线0.13MM*7股(黄铜线)
28-50B620-0003	统宝数字TFT屏 3.5inch 16:9 (99000738/TJ035NC06AA)
74-020860-0220	遥控接收头 8*6MM(15M/5V)
06-309188-2002-1A-N	前板PY-9188T-KB(TPO)统宝屏 通用绿色(外发件)
04-033868-0200	贴片晶体 33.8688MHZ 49S/SMD
06-309188-2002	前板 PY-9188T-KB(TPO) FR-4 188.4*159*MM/3
07-080000-9900	贴片电阻 0 5% 0603
07-080100-9900	贴片电阻 10 5% 0603
07-080102-9900	贴片电阻 1K 5% 0603
07-080103-9900	贴片电阻 10K 5% 0603
07-080512-9900	贴片电阻 5K1 5% 0603
07-080103-9940	贴片排阻 10K 5% 0603
07-080104-9900	贴片电阻 100K 5% 0603
07-080122-9900	贴片电阻 1K2 5% 0603
07-080152-9900	贴片电阻 1K5 5% 0603
07-080162-9900	贴片电阻 1K6 5% 0603
07-080182-9900	贴片电阻 1K8 5% 0603
07-080183-9900	贴片电阻 18K 5% 0603
07-080228-9900	贴片电阻 2R2 5% 0603
07-080221-9900	贴片电阻 220 5% 0603
07-080222-9900	贴片电阻 2K2 5% 0603
07-080273-9900	贴片电阻 27K 5% 0603
07-080330-9900	贴片电阻 33 5% 0603
07-080330-9940	贴片排阻 33 5% 0603



## Electical Parts List

07-080332-9900	贴片电阻 3K3 5% 0603
07-080392-9900	贴片电阻 3K9 0603 5%
07-080470-9900	贴片电阻 47 5% 0603
07-080472-9900	贴片电阻 4K7 5% 0603
07-080561-9900	贴片电阻 560 5% 0603
07-080680-9900	贴片电阻 68 5% 0603
07-080681-9900	贴片电阻 680 5% 0603
07-080821-9900	贴片电阻 820R 5% 0603
07-080822-9900	贴片电阻 8K2 5% 0603
08-045470-0002	钽电容 B型 47UF/6.3V ±10%
09-088104-1300	贴片电容 104/25V 0603 ±10%
09-088105-1300	贴片电容 105/16V 0603 ±10%
09-088220-1300	贴片电容 22P/50V 0603 ±5%
09-088224-1300	贴片电容 224/25V 0603 ±10%
09-088225-1300	贴片电容 225 10% 0603 10v
09-088331-1300	贴片电容 330P/50V 0603 ±5%
09-088684-1300	贴片电容 684/16V 0603 ±10%
12-715819-0004	贴片二极管 5819 SOD-106
11-003202-0500	IC MP3202 IC-MP1518
11-000118-0501	IC T118EL LQFP-64
11-321117-0900	IC LD1117 (3.3V) T0-223
11-411718-0000	IC T0-223, LD1117(1.8V)
12-300091-0021	贴片稳压二极管 9.1V (9.05V~9.20V) 1206
16-0A1278-0000	贴片电感 0603 2.7uH
16-A00000-1003	贴片磁珠 FB 0Ω 0603
16-AA2000-0000	贴片磁珠 1206 FB320
16-B00120-0001	贴片功率电感 12uH±20%
16-B00470-0001	贴片功率电感 47uH±10% CD43(SM 4532)
17-020603-0207	贴片灯3.3V LED 0603绿光
34-010339-0800	贴片插座 39P 0.3MM (下接口)FPC0.3A-39XTA
14-500600-0003	贴片按制 5.0(卷带封装)
06-208202-2001-0A-N	6128DVD 伺服板8208TQ无机芯
04-027001-0100	插件晶体 27.000MHz 30PPM S型 30PPM S型
12-114001-0000	普通二极管 IN4001
12-590928-0000	传感器 IR928-6C (6-1)PHOTO
14-300112-0000	碟到位开关 (兆杰MDS-11D04)
21-206110-0090	屏蔽线 2PIN公端子带线 L=110mm
21-406130-0090	连接线 4PIN公端子带线 L=130mm
29-732000-2009	FFC排线 32PIN, 间距1.0mm, L=130mm
06-208202-2001-1-N	伺服板 PY6128D(SERVO-TQ)PCB FR-4 HP=1.2mm, VER-A
06-208202-2003	伺服板 PY6128D(8202TQ) SVB FR-4 HP=1.2mm, VER-A
07-060000-0940	贴片排阻 0R 5% 0603
07-080000-9900	贴片电阻 0 5% 0603

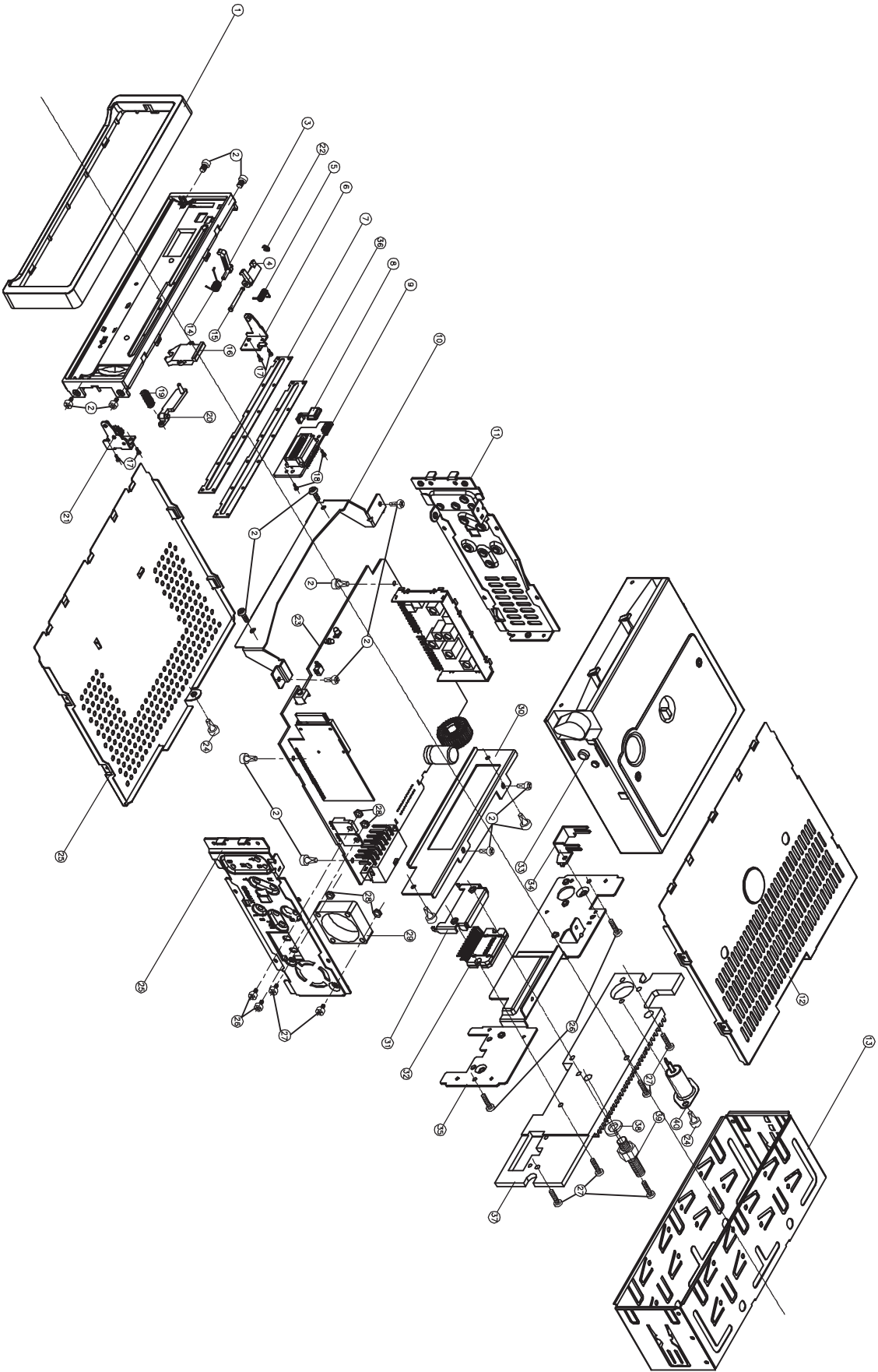
## Electical Parts List

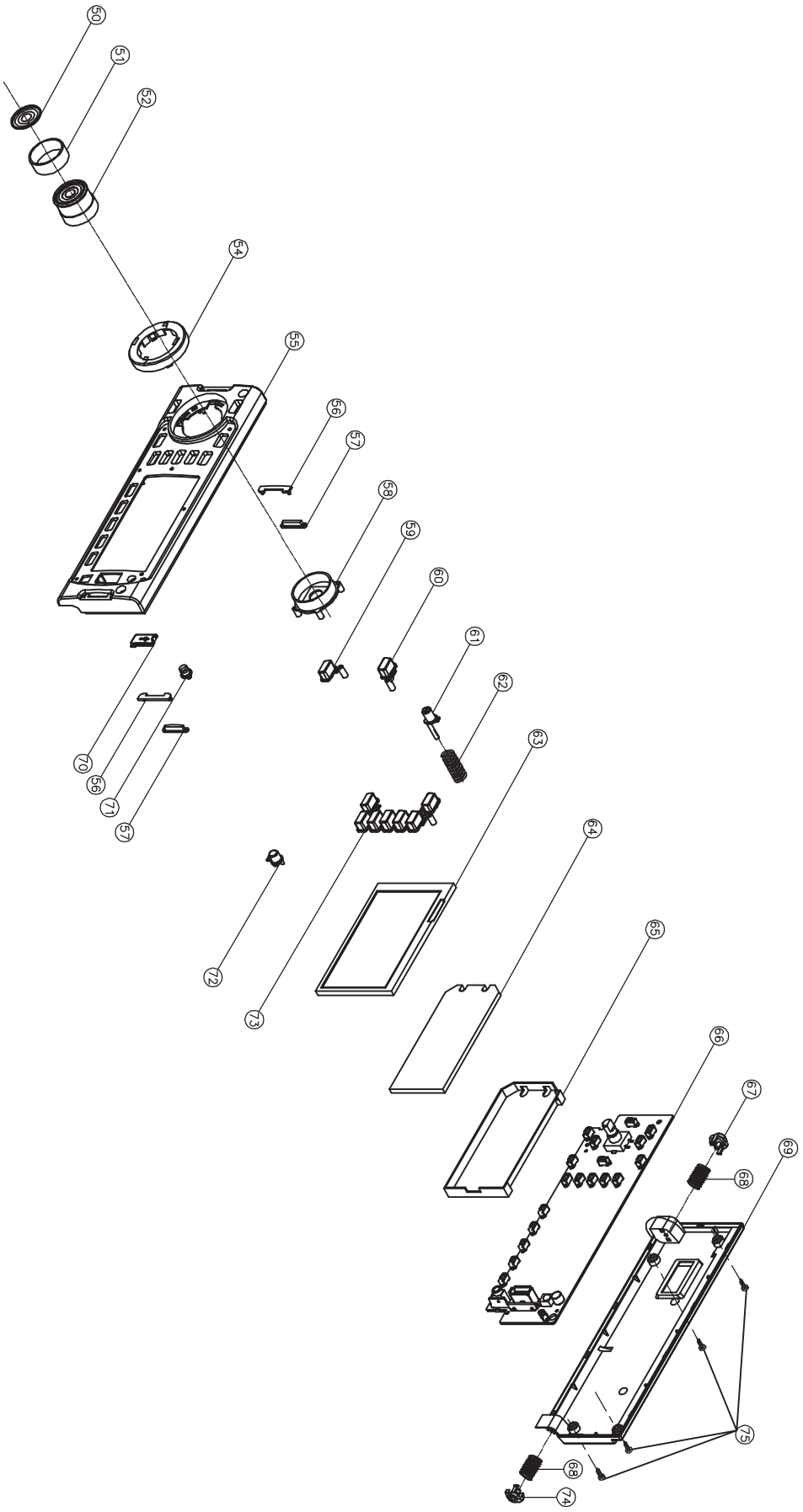
07-080101-9900	贴片电阻	100	5%	0603
07-080102-9900	贴片电阻	1K	5%	0603
07-080103-9900	贴片电阻	10K	5%	0603
07-080104-9900	贴片电阻	100K	5%	0603
07-080108-9900	贴片电阻	1R	5%	0603
07-080153-9900	贴片电阻	15K	5%	0603
07-080220-9900	贴片电阻	22	5%	0603
07-080221-9900	贴片电阻	220	5%	0603
07-080222-9900	贴片电阻	2K2	5%	0603
07-080123-9900	贴片电阻	12K	5%	0603
07-080228-9900	贴片电阻	2R2	5%	0603
07-080330-9900	贴片电阻	33	5%	0603
07-080330-9940	贴片排阻	33	5%	0603
07-080361-9900	贴片电阻	360	5%	0603
07-080472-9900	贴片电阻	4K7	5%	0603
07-080473-9900	贴片电阻	47K	5%	0603
07-080518-9900	贴片电阻	5R1	5%	0603
07-080680-9900	贴片电阻	68	5%	0603
07-080750-9900	贴片电阻	75	5%	0603
08-045470-0002	钽电容	B型 47UF/6.3V	±10%	
08-216100-5022	电解电容	10UF/50V ±20%	φ 5X5mm 排带2.5MM脚距, 平底部伸出	
08-216101-0029	电解电容	100UF/10V ±20%	φ 5X5mm 排带2.5MM脚距, 平底部伸出	
08-216478-5022	电解电容	4.7UF/50V ±20%	φ 4X5mm 排带2.5MM脚距, 平底部伸出	
08-216221-0029	电解电容	220UF/10V ±20%	φ 6.3*5mm 排带2.5MM脚距, 平底部伸出	
08-216470-1029	电解电容	47UF/16V ±20%	φ 5X5mm 排带2.5MM脚距, 平底部伸出	
09-088100-1300	贴片电容	10P/50V	0603	±5%
09-088101-1300	贴片电容	100P/50V	0603	±5%
09-088102-1300	贴片电容	102/50V	0603	±10%
09-088103-1300	贴片电容	103/50V	0603	±10%
09-088104-1300	贴片电容	104/25V	0603	±10%
09-088105-1300	贴片电容	105/16V	0603	±10%
09-088330-1300	贴片电容	33P/50V	0603	±5%
09-088471-1300	贴片电容	470P/50V	0603	±5%
09-088821-1300	贴片电容	820P/50V	0603	±5%
10-021132-1280	贴片三极管	SOT-89, 2SB1132		
10-063904-0170	贴片三极管	SOT-23, 2NS3904		
10-178050-7170	贴片三极管	SOT-23, C8050		
10-179014-7170	贴片三极管	KTC9014S-PTK/P, SOT-23		
10-179015-7170	贴片三极管	SOT-23, 9015		
11-004016-0201	集成电路	IC SSOP-54 SAMSUNG UC60 4X16M		

## Electical Parts List

11-025T80-0400	IC 8M FLASH (SPI EN25T80) SO-8
11-102402-0400	IC SOP-8, 24C02N
11-196287-9400	IC SOP-8, BA6287F
11-321117-0900	IC LD1117 (3.3V) T0-223
11-411718-0000	IC T0-223, LD1117(1.8V)
11-AM5888-0100	IC AM5888S DIP28-SSOPH
11-HE8202-0500	IC SPHE8202TQ QFP128
12-214148-0011	贴片二极管 IN4148 1206 圆柱形
16-0A1108-0000	贴片电感 1UH 0603
16-A00000-1003	贴片磁珠 FB 0Ω 0603
16-A00100-0000	贴片电感 0603, 10uH
34-010324-0310	贴片插座24P a=0.5mm (up port)
34-010332-0320	贴片插座 32PIN, 间距1.0mm, up port
06-909118-2801-0-N	9188J板 (插件)
14-500600-0007	EJ贴片按制 TC-3612SMT
19-116262-1201	26P插件插座(母插)
29-726000-0709	FFC线 Flexible wire 26P L=70mm, a=1.0mm
06-909118-2801-1-N	9188J板 (外发)
06-909118-2801	PCB连接板双面板 T=1.2 79.7*110/6pcs
07-080102-9900	贴片电阻 1K 5% 0603
07-080104-9900	贴片电阻 100K 5% 0603
17-010603-0207	贴片灯2.0V LED 0603红光
75-011200-2608	DVD机芯(科派)马达: 万宝至/唯真/振桦减震器(阿尔法)开关(康尔乐)HOP-1200W-B 传动皮带 排线: 53mm

# EXPLODED DRAWING





# EXPLODED DRAWING

# EXPLODED DRAWING INSTRUCTION

40						ANT			1
39	59-085403-5021	SCREW							1
38	46-051309-0400	SPRING WASHER							1
37	43-611801-0001	HEAT SINT							1
36	48-036118-0100	LEVER OPEN					PC		1
35	43-086118-0110	BACK BRACKET					G.S.S.		1
34	44-036118-0101	LINE CLIP					G.S.S.		1
33		DECK							1
32		IC7384							1
31	44-058128-0100	7384 IC BKT					G.S.S.		1
30	44-028118-0100	DECK REAR BKT					G.S.S.		1
29		FAN							1
28	59-065103-3025	NUT							4
27	59-012103-3012	SCREW							7
26	59-012103-3008	SCREW							5
74	59-022301-2010	SCREW		4	25	43-078198-0110	RIGHT BKT	G.S.S.	1
73	41-089188-0000	1-6 KNOB	ABS	1	24	59-012103-3004	SCREW		4
72	41-079188-0000	EQ KNOB	ABS	1	23		MAIN PCB		1
71	41-019188-0000	REMOTE HEAE STOPPER	ABS	1	22	46-060415-0400	E型介子 $\varnothing 1.5 \times 4$		1
70	56-019188-0000	USB STOPPER	RUBBER	1	21	44-078198-0000	GEAR		1
69	40-029188-0000	BOTTOM	ABS	1	20	41-128198-0000	PC SHEET	ABS	1
68	45-800056-0000	SPRING		2	19	59-022103-2004	LOCKER SPRING	SUS	1
67	41-168198-0000	LINE AXIAL RIGHT	ABS	1	18	59-022101-2004	SCREW M2X2PMO(+)		2
66		KB		1	17	59-022101-2004	SCREW M2X4PMO(+)		4
65	41-329268-0000	LCD BRACKET	ABS	2	16	41-688118-0001	CD REFLECTOR	PMMA	1
64	41-339268-0000	LCD REF	PC	1	15	43-026118-0110	BOTTOM COVER		1
63		LCD		1	14	45-502038-0500	PUSH BLOSK SPRING	SECC	1
62	45-010036-0000	SPRING		1	13	43-088118-0110	CARRYING CASE	G.S.S.	1
61	41-119188-0000	OPEN KNOB	AMS	1	12	43-018118-0110	TOP CAB	G.S.S.	1
60	41-129188-0000	POWER KNOB	ABS	1	11	43-068118-0110	LEFT BKT	G.S.S.	1
59	41-139188-0000	ST KONB	ABS	1	10	44-018118-0100	DECK FRONT BKT		1
58	41-039188-0000	LIGHT KNOB	PC	1	9		CONNECT PCB		1
57	41-029188-0000	L.R.ADORNMENT BLOCK	PC	1	8	41-118198-0000	EJ KNOB	ABS	1
56	41-069188-0000	L.R.ADORNMENT BLOCK	ABS	1	7	71-112812-0001	CD WINDOW DOOR		1
55	40-019188-0000	PANEL	ABS	1	6	44-068198-0100	LEFT BRACKET		1
54	41-149188-0000	AMS KONB	ABS	1	5	45-902034-0500	LOCK SPRING		1
53			ABS	1	4	41-138198-0000	LOCK	ABS	1
52	41-159188-0000	VOLUME KNOB	ABS	1	3	41-148198-0000	LEVER OPEN		1
51	56-029188-0000	RUBBER CIRCLE	ABS	1	2	59-022103-2004	SCREW M2XPMO(+)		15
50	41-059188-0000	VOL KNOB DECORATION	ABS	1	1	40-0481988-0000	TRIM PLATE	ABS	1
NO.	PART NUBER	DESCRIPTION	MATERIAL	QTY	NO.	PART NUBER	DESCRIPTION	MATERIAL	QTY

## Mechanical Parts List

74-918801-1006	DVD+TFT 遥控器 SHUTTLE
90-9188DT-0109	PY-9188DT 主结构料 B3-2010-149D
40-019118-0001	基座(26PIN), ABS777D/BLACK, 喷亚黑油
40-049188-0001	装饰框, ABS777D/BLACK, 喷亮黑漆
41-169188-0001	EJ钮, ABS/瓷白, 喷黑油光刻光字
41-739118-0001	CD碟口透光架, ACRYLIC/CLEAR, 喷白油
41-128198-0000	开关触杆 (LEVER SW)
41-138198-0000	锁扣 (LOCKER)
41-148198-0000	翻面推杆 (LEVER OPEN)
41-158198-0000	齿轮 (GEAR)
42-018198-0100	锁扣铜柱 $\Phi 2.0 \times 20.4$
43-016118-0110	面盖 0.6MM G.S.S
43-026118-0110	底盖 0.6MM G.S.S
43-066118-0110	左侧架 1.0MM G.S.S
43-076118-0110	右侧架 1.0MM G.S.S
43-086118-0110	后侧架A (4X25W, 14PIN) 1.0MM G.S.S
43-611801-0006	MCU散热片 (有凸台)
43-611801-0001	散热片 4X40W, 14PIN, 拉铝 (6/8系列)
44-016118-0100	机芯前支架 1.0MM G.S.S.
44-026118-0100	机芯后支架 1.0MM G.S.S.
44-069138-0100	左翻板支架
44-079138-0100	右翻板支架
44-036118-0101	卡线夹, SECC/0.8mm
44-058138-0100	7384 IC支架 1.0MM G.S.S, 可插入PCB板
45-010036-0300	出盒弹簧 线径 $\Phi 0.3$
45-502038-0600	翻面推杆弹簧 $\Phi 0.55$
45-902034-0600	锁扣弹簧 $\Phi 0.6$
46-060415-0400	E型介子 1.5*4*0.4
46-010530-0200	纸皮介子 $3.0 \times 8.0 \times 0.5\text{mm}$
48-036118-0500	CD碟口绒布压片 (PVC, 127X12.6X0.5t, 透明)
56-147173-0004	主快巴纸, 173.6*147.2*0.4T
59-022101-2003	机牙小盘头平尾螺丝 M2.0x3PMZh, 黑色
59-012103-2603	机牙大盘头平尾螺丝 M2.6x3BZb, 白色
59-012103-2604	机牙大盘头平尾螺丝 M2.6x4BZb, 白色
59-012103-2004	机牙大盘头平尾螺丝 M2x4BZb, 白色
59-012106-3004	PS-T3*4三角牙 白色 大盘头三角尾自攻加硬
59-022301-2005	自攻主板固定螺丝 2.0x5 黑色
59-012103-3008	机牙大盘头平尾螺丝 M3x8BZb, 白色
59-022103-3013	SCREW M3x13PMNi (+) 小圆头 镀叻
59-012103-3006	机牙大盘头平尾螺丝 M3x6BZb, 白色圆头
59-065103-3025	MUT M3.0螺母
59-022301-2008	自攻锁紧螺丝 PA2*8, 黑色
59-022101-2005	机牙小盘头平尾螺丝 M2x5BZh, 黑色
59-065103-2020	M2.0螺母
68-009118-0100	阻力轮 70g

## Mechanical Parts List

69-018198-0002	机座EVA, $\phi$ 4X2MM, 单面背胶
69-048118-2000	机芯垫, EVA, $\phi$ 12*2, 黑色EVA, 硬度30, 单面背胶
71-016118-0000	黑色不织布, 170*80*80G
71-112812-0001	CD碟口绒布, 单面黑色绒布, 128*12.6*0.5T
90-9188DT-0209	PY-9188DT前咀结构料 B3-2010-149D
40-019188-0008	面壳(TFT用), ABS777D/BLACK, 喷亮黑油丝印银字“DVD, SEL/VOL, MU”(877C)
40-029188-0001	底壳(26PIN), ABS777D/BLACK, 喷亮黑
41-019188-0001	遥控头盖, ACRYLIC/CLEAR, 喷深紫红色(209C)
41-029188-0004	左右装饰条, ACRYLIC/GREEN, 底部喷白
41-039188-0004	音量钮发光胶, ACRYLIC/GREEN, 底部喷白
41-049188-0011	装饰块, ABS/BLACK, 喷半光黑油丝印银字(877C)“AUX”(TFT用)型号: SDV-3540
57-900303-0081	SHUTTLE标牌 PVC, 黑底镂空银字, 17.6X3.4MM
41-059188-0000	音量钮装饰盖, ABS/BLACK
41-069188-0001	左右装饰块, ABS/BLACK, 喷半光黑
41-079188-0001	EQ钮, ABS/瓷白, 喷亮黑油光刻光字
41-089188-0001	数字钮, ABS/瓷白, 喷亮黑油光刻光色“□/5, OSD/6”
41-119188-0001	OPEN钮(手动), ABS, 喷亮黑油
41-129188-0001	POWER钮, ABS/瓷白, 喷亮黑油光刻光字
41-139188-0001	ST钮, ABS/瓷白, 喷亮黑油光刻光字
41-149188-0001	MODE/AMS/巡迹钮, ABS/瓷白, 喷亮黑漆光刻光字
41-159188-0001	音量钮, ABS, 水电镀枪色
41-168198-0000	左转轴, POM/BLACK
41-178198-0000	右转轴, POM/BLACK
45-010036-0300	出盒弹簧 线径 $\phi$ 0.3
45-800056-0400	左右转轴弹弓, $\phi$ 0.4
56-019188-0000	USB橡胶盖, 硬度75
56-029188-0000	音量钮橡胶圈
59-022301-2010	自攻锁紧螺丝PA2*10, 黑色 USB/SD盖
69-050035-5000	USB遮光EVA, 黑色EVA, 硬度38, 5X3.5X5MM 单面3m胶
69-038118-2000	遥控头遮光EVA, 7X7X3mm, 内径 $\phi$ 4.5mm
69-028118-2000	遥控头垫, EVA, 5*5*2mm, 单面背胶
69-050050-4200	60度EVA, 双面粘3M胶, 5*5*4.2T
90-9188DT-0307	PY-9188DT包材 B3-2010-149D
40-059188-0000	眼镜盒 PP/BLACK(表面拉丝)
57-900505-0038	SHUTTLE标牌, 0.8mmPVC, 黑底拉丝银字, 48.5X8.5mm
40-068118-0000	火牛盒, PP/BLACK
43-088118-0110	半截柜筒 0.6mm G. S. S
44-048118-0100	钥匙 1.0mm G. S. S
44-108118-0100	长巴 0.8mm G. S. S
46-020805-0400	M5.0平面垫圈 主机固定到车内时使用
46-051309-0400	SPRING WASHER M5 垫机尾螺丝和长巴螺丝(备用)
59-012103-4005	机牙大盘头平尾螺丝M4X5BZb, 白色 ISO孔备用螺丝



## Mechanical Parts List

59-012103-5005	机牙大盘头平尾螺丝M5X5BZc, 五彩 ISO孔备用螺丝
59-032303-5025	自攻加硬锁紧螺丝TA5*25, 白色 主机固定到车内时使用
59-065103-5003	M5螺母 主机固定在车内时使用
59-085403-5021	M5X21机牙双头螺杆六角螺丝
62-029138-0000	发泡胶 (1套)
62-059138-0001	眼睛盒胶袋250X100MM
62-058118-0001	眼镜盒胶袋 250x89mm
62-058118-0002	主机胶袋 317x304mm
62-058118-0004	螺丝, 垫片, 钥匙胶袋 140x85mm
62-058118-0005	输出线胶袋 200*80mm
69-400100-5000	眼镜盒海绵, 黑色海绵, 40X10X5MM, 单面背胶
69-400200-1000	眼镜盒海绵, 黑色海绵, 40X20X10MM, 单面背胶
60-B10149-04-01	说明书, 型号:SDV-3540
62-058118-0006	说明书胶袋 225*165MM (带封口条)
63-018118-0904	15A FUSE LABEL WHTHE/BLK
63-018118-0903	1A FUSE LABEL WHTHE/BLK
63-038118-0501	同轴贴纸 白底红字
63-048118-0401	CLASS I LABEL 黄底黑字
63-058118-0901	QC PASSED LABEL 白底黑字
63-168118-1001	VIDEO INPUT 黑底白字
63-168118-0801	VIDEO OUTPUT 灰底白字
63-068118-0601	ANT BLUE/BLK
63-078118-0201	ACC+ RED/BLK
63-088118-1001	GROUND 黑底白字
63-098118-0401	B+ YELLOW/BLK
63-108118-0701	REAR-R SPEAKER (+) (-) VIOLET/BLK
63-118118-0801	FRONT-R SPEAKER (+) (-) GRAY/BLK
63-128118-0501	REAR-L SPEAKER (+) (-) GREEN/BLK
63-138118-0901	FRONT-L SPEAKER (+) (-) WHT/BLK
63-188118-0101	LINE OUT FRONT L CH (二组RCA时用)
63-188118-0102	LINE OUT FRONT R CH (二组RCA时用)
63-198118-0801	LINE OUT REAR R CH (二组RCA时用)
63-198118-0802	LINE OUT REAR L CH (二组RCA时用)
63-258118-0101	SUBWOOFER LINE OUT 贴纸
63-019138-0801	SAFETY 贴纸
63-029138-0202	BACK VIEW IN 黑底白字
63-039138-1002	BACK VIEW CONTROL 橙底白字
63-278118-1001	PUSH TO EJECT RED/WHITE, AKITA专用
63-318118-0201	AUX IN R RED/BLACK
63-328118-0901	AUX IN L (白底/黑字) RED/WHITE
63-208118-0401	光头贴纸 YELLOW/BLK
63-228118-0401	电器危害贴纸 YELLOW/BLK
63-268118-0201	机芯螺丝封条
63-B10149-04-01	机面贴纸 型号: SDV-3540
64-B10038-01-01	保修卡
65-B10149-04-01	卡通箱(扣底用) A=A 5pcs 尺寸470*239*326MM 型号:SDV-3540 B3-2010-149D
66-B10149-04-01	彩盒(扣底上开盖)225x90x306MM(250g裱B9加强过哑胶局部UV) 型号:SDV-3540

