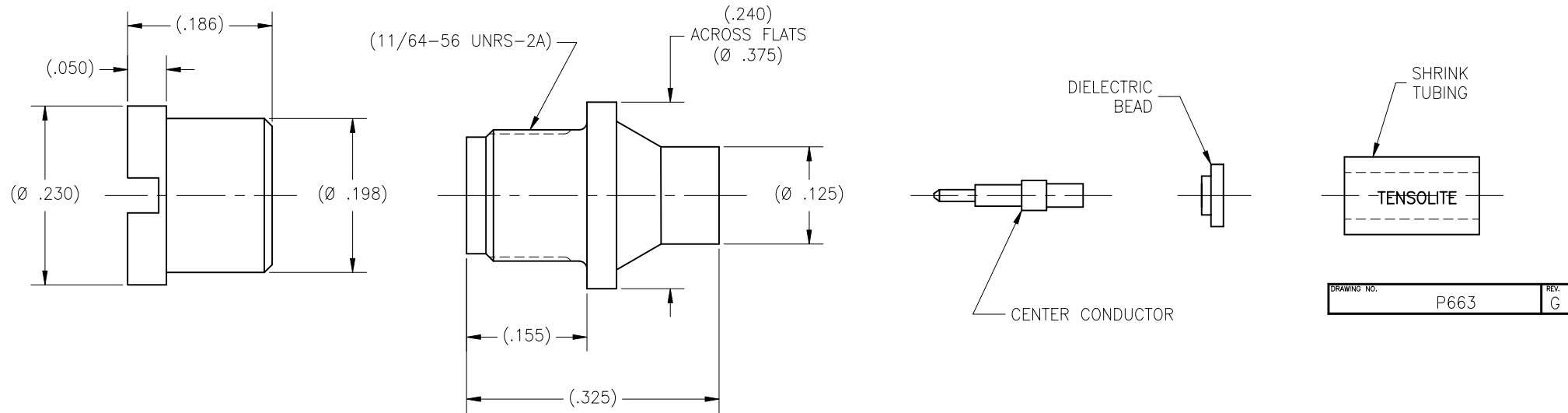


P/N	APPLICABLE NOTE(S)	CABLE TYPES	CABLE TYPES	FIGURE
-1CC	1,2,3,4	M17/93-RG178 (OR EQUIVALENT)	CATCHER'S MITT	1
-2CC	1,2,3,4	RD178 (OR EQUIVALENT)	CATCHER'S MITT	1
-3CC	1,2,3,4	M17/113-RG316 (OR EQUIVALENT)	CATCHER'S MITT	1
-4CC	1,2,3,4	RD316 (OR EQUIVALENT)	CATCHER'S MITT	1
-5CC	1,2,3,4	M17/93-RG178 (OR EQUIVALENT)	LIMITED DETENT	2
-6CC	1,2,3,4	RD178 (OR EQUIVALENT)	LIMITED DETENT	2
-7CC	1,2,3,4	M17/113-RG316 (OR EQUIVALENT)	LIMITED DETENT	2
-8CC	1,2,3,4	RD316 (OR EQUIVALENT)	LIMITED DETENT	2
-9CC	1,2,3,4	M17/93-RG178 (OR EQUIVALENT)	FULL DETENT	2
-10CC	1,2,3,4	RD178 (OR EQUIVALENT)	FULL DETENT	2
-11CC	1,2,3,4	M17/113-RG316 (OR EQUIVALENT)	FULL DETENT	2
-12CC	1,2,3,4	RD316 (OR EQUIVALENT)	FULL DETENT	2

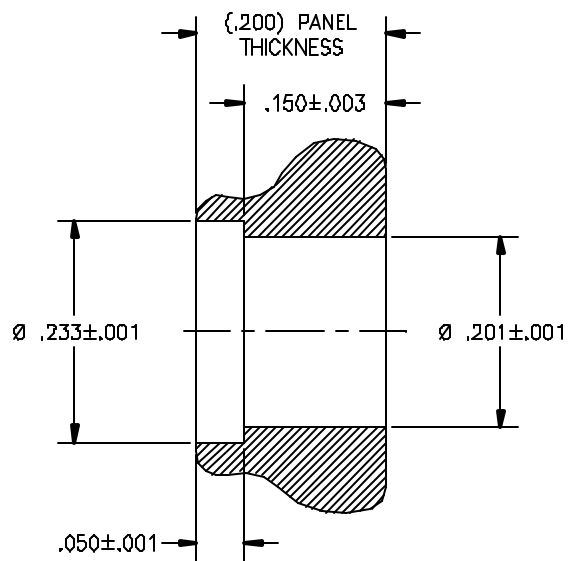
REVISIONS				
ZONE	REV	DESCRIPTION	DATE	BY
-	E	ECO 12099	08.11.00	DKN
-	F	ECO 12737	03/02/01	HDB
-	G	ECO 13798	10.11.01	AGS



- NOTE(S):
- MATERIAL(S):
 - BODY: 303 SST PER ASTM A-582
BeCu ALLOY PER ASTM B-196.
 - MOUNT: 303 SST PER ASTM A-582.
 - INSULATOR: PTFE PER ASTM D-1710.
 - CENTER CONDUCTOR: BeCu ALLOY PER ASTM B-196.
 - FINISH(ES):
 - BODY: GOLD PLATED PER ASTM B-488 OVER
NICKEL PLATE PER AMS-QQ-N-290
 - MOUNT: PASSIVATED PER ASTM A-967.
 - INSULATOR: NONE
 - CENTER CONDUCTOR: GOLD PLATED PER ASTM B-488 OVER
NICKEL PLATE PER AMS-QQ-N-290
 - ELECTRICAL PERFORMANCE:
 - FREQUENCY RANGE: DC-18GHz
 - R.F INSERTION LOSS: 0.1 dB Max to 18GHz
 - VSWR: 1.15:1 Max to 18GHz
 - ASSEMBLY INSTRUCTIONS PER DRAWING # AI-408 & AI-409.

INSTALLED VIEW ON SHEET 2

APPLICABLE TENSOLITE DOCUMENTS			TOLERANCES AND NOTES EXCEPT AS NOTED		MATERIAL		SIZE		SPECIFICATION		PROCUREMENT	
WORK STD	PROD INST	ASSY INST	DIMENSIONS ARE IN INCHES. LINEAR .XX ±.015 ANGULAR ± 1/2° FRACTION ± 1/32		-		-		-		-	
NA	NA	NA	1. MACHINE FINISH: $\sqrt{}$ RMS 2. BREAK ALL SHARP EDGES .003 MAX.		NEXT ASSY		Tensolite		HIGH PERFORMANCE CABLES & INTERCONNECT SYSTEMS Long Beach, California 90815			
NOTICE			3. MACHINED FILLETS .005 MAX. 4. MACHINED SURFACES SQUARE TO RESPECTIVE AXIS WITHIN .005 INCHES PER INCH. 5. MACHINED DIAMETERS CONCENTRIC WITHIN .002 T.I.R. 6. DIMENSIONS TO BE MET BEFORE PLATING. 7. CHAMFER ALL THREADS 45°. 8. THREADS PER H-28 9. REMOVE FRADED EDGES ON TEFLON. 10. REMOVE ALL BURRS.		APPROVAL INITIALS		DATE		TITLE		SHEET 1 OF 2	
THIS DRAWING EMBODIES A CONFIDENTIAL PROPRIETARY DESIGN ORIGINATED BY TENSOLITE COMPANY AND ALL DESIGN, MANUFACTURING, REPRODUCTION, USE AND SALE RIGHTS REGARDING THE SAME ARE EXPRESSLY RESERVED. IT IS SUBMITTED UNDER A CONFIDENTIAL RELATIONSHIP FOR A SPECIFIED PURPOSE AND THE RECIPIENT AGREES BY ACCEPTING THIS DRAWING NOT TO SUPPLY OR DISCLOSE ANY INFORMATION REGARDING IT TO ANY UNAUTHORIZED PERSON TO INCORPORATE IN OTHER PROJECTS ANY SPECIAL FEATURES PECULIAR TO THIS DESIGN. ALL PATENT RIGHTS HERETO ARE EXPRESSLY RESERVED BY TENSOLITE COMPANY, LONG BEACH, CALIFORNIA 90815.			DRAWN BY		BRD		01/09/96		SMP MALE PANEL MOUNT STRAIGHT TO FLEX CABLE			
			CHECKED		QUALITY		SCALE		SUB-DIRECTORY FILENAME		DRAWING NO.	
			ENGINEERING		ATV		10.23.01		SIZE		C 30990	
									DRAWING NO.		P663	
											REV. G	



RECOMMENDED PANEL HOLE

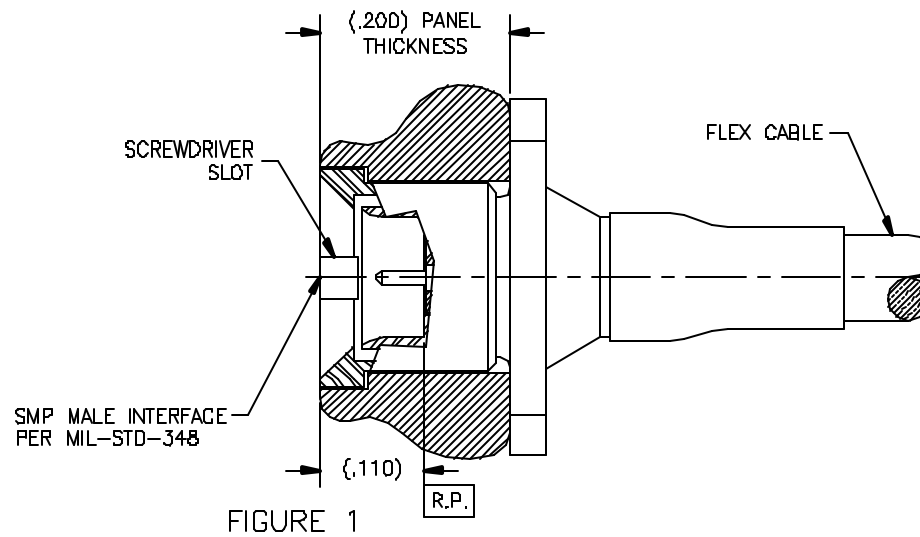


FIGURE 1

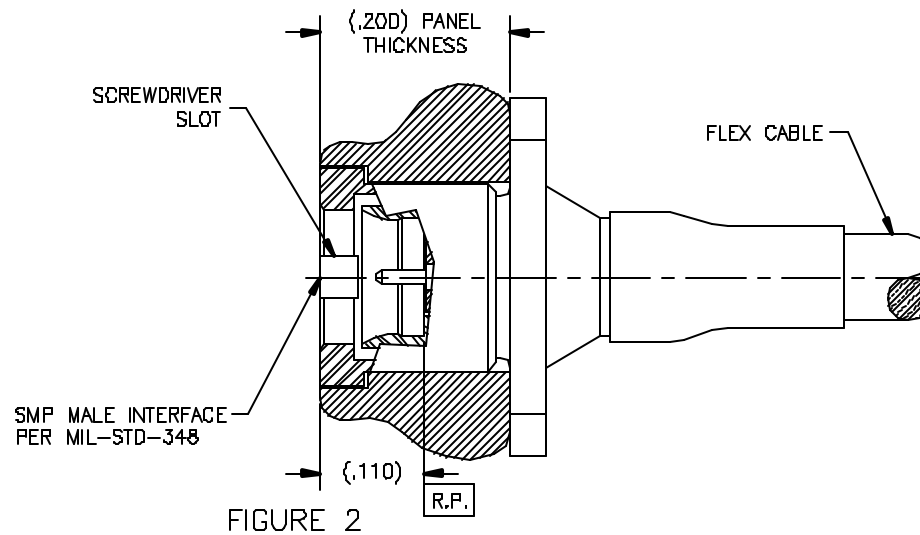


FIGURE 2

INSTALLED VIEW

SCALE	10/1	REV. ORIGINATOR'S NAME	DLXXX/DLP663	SHEET	2	OF	2
REV.	C	DATE CODE	30990	DRAWING NO.	F663	REV.	G