

GENERAL CHARACTERISTICS AND ROHS INFORMATIONS:

SEE GS-12-448

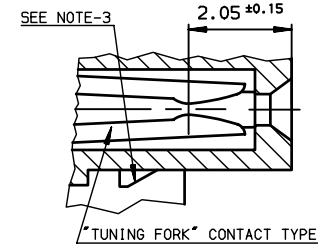
- NOTE-1: PRESS-IN RETENTION PEG
 - NOTE-2: PLUG FOR CODING KEY FIXING
 - NOTE-3: MOUNTING ON PCB, MANUAL OR WITH LITTLE STANDARD PRESS
 - NOTE-4: IF SUFFIX "P" IS ADDED PACKAGING IS TRAYS BUT MARKING WILL BE WITHOUT "P"
- Example P/N: HM1F41FAP000H6P, Marking HM1F41FAP000H6

SPECIFIC DATAS:

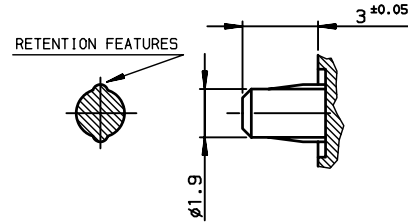
VISUAL INSPECTION: 100%

- marking failure
- housing material failure
- spoilt housing
- stained housing
- broken contacts (twisted or loosen)

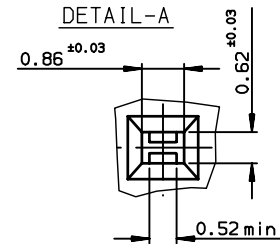
SECTION-FF



DETAIL OF PRESS-IN PEGS (SCALE 5:1)



DETAIL-A



TIN LEAD PART NUMBER

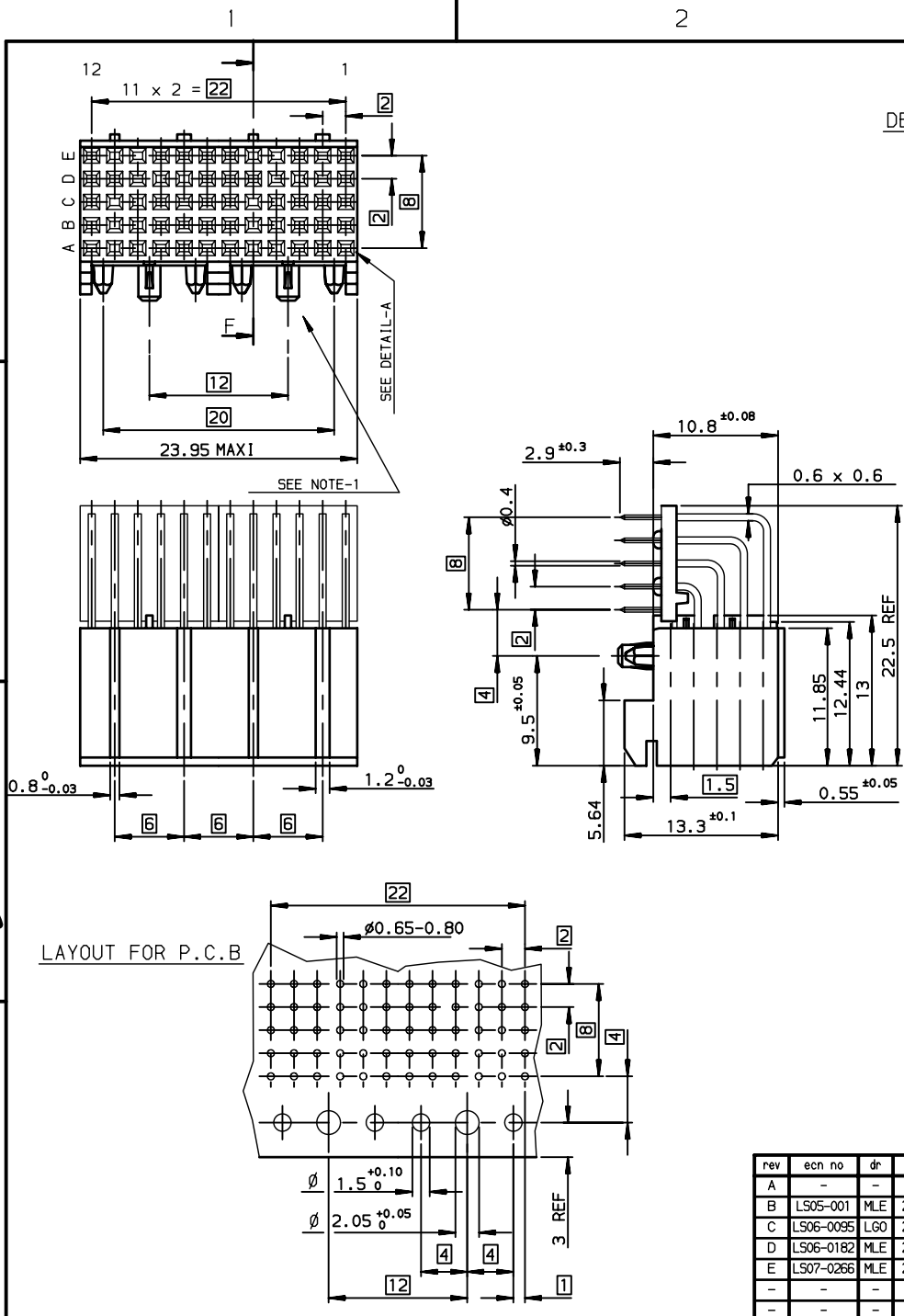
Part number **HM1F52FAP400H6**

LEAD FREE PART NUMBER

Part number **HM1F52FAP400H6LF**

rev	ecn no	dr	date
A	-	-	-
B	LS05-001	MLE	2005/03/15
C	LS06-0095	LGO	2006/07/05
D	LS06-0182	MLE	2006/11/16
E	LS07-0266	MLE	2007/10/26
-	-	-	-
-	-	-	-

www.fciconnect.com		surface ISO 1302 ✓	tolerance std ISO 406 ISO 1101	projection mm
TOLERANCES UNLESS OTHERWISE SPECIFIED				
Dr	PERRICHOT	2001/01/30	ANGULAR	LINEAR
Eng	LENOIR	2001/01/30	0.X	±0.1
Chr	LEGARE	2001/01/30	0.XX	±0.1
Appr	LEGARE	2001/01/30	0.XXX	±0.1
Product family			METRAL	
title METRAL FEMALE 5 ROWS 60 CTS				size A3
catalog no				Scale 2.5
RIGHT ANGLE SOLDER-(PRESS-IN PEGS)				ECN LS07-0266
-				Spec ref -
-				Rev. E
-				CUSTOMER sheet 1 of 1



REV F - 2006-04-17



Copyright FCI.