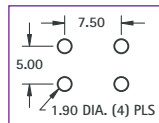


METRIC - "SNAP-IN" PC SCREW TERMINALS



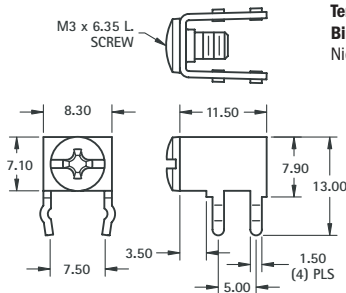
Mounting Detail



CAT. NO. 7790 (Supplied Less Screw)

CAT. NO. 7689 (Screw Supplied Unassembled)

CAT. NO. 7695 (Screw Installed & Captivated)



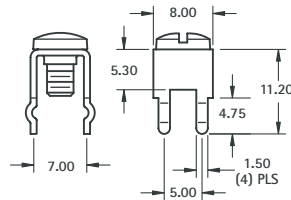
M3 HORIZONTAL

SPECIFICATIONS

Rated: 15 Amps

Terminal: 0.81 thick Brass, Tin Plate

Binding Head Screw: Brass, Nickel Plate



M3 VERTICAL

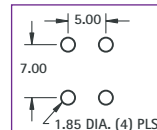
CAT. NO. 7788 (Supplied Less Screw)

CAT. NO. 7698 (Screw Supplied Unassembled)

CAT. NO. 7696 (Screw Installed & Captivated)



Mounting Detail



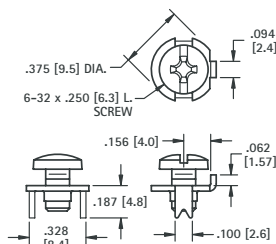
NOTE: All dimensions are in millimeters

LOW PROFILE SCREW TERMINALS

These sturdy, low cost screw terminals, feature an anti-rotation tab for use with spade terminals. They are available with the screw installed and captivated, the screw unassembled or without a screw.



6-32



SPECIFICATIONS

Rated: 15 Amps

Terminal: .032 (.81) thick Brass, Tin Plate

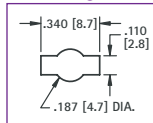
Screw: Combination drive, Stainless Steel

CAT. NO. 1284 (Supplied Less Screw)

CAT. NO. 1298 (Screw Supplied Unassembled)

CAT. NO. 1201 (Screw Installed & Captivated)

Mounting Detail

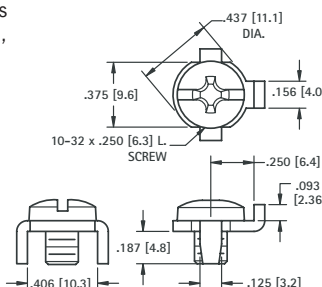


PRINCIPLE FEATURES

- Easy to connect using solid or stranded wire, crimp lugs or terminals
- Anti-rotation tab for use with spade terminals
- Supplied with screw installed and captivated, with screw unassembled, or without screw
- Stainless steel screw will not wick



10-32



SPECIFICATIONS

Rated: 30 Amps

Terminal: .062 (1.6) thick Brass, Tin Plate

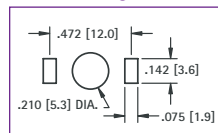
Screw: Combination drive, Stainless Steel

CAT. NO. 1293 (Supplied Less Screw)

CAT. NO. 1299 (Screw Supplied Unassembled)

CAT. NO. 1202 (Screw Installed & Captivated)

Mounting Detail

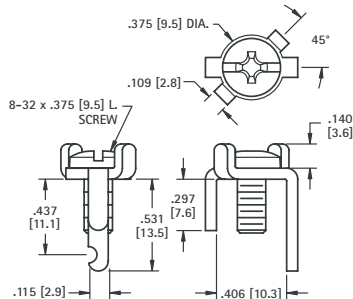


HEAVY DUTY SCREW TERMINALS

These heavy duty terminals are available with the screw installed or unassembled, and feature easy access to connect solid or stranded wire, crimp type lugs or terminals.



8-32



SPECIFICATIONS

Rated: 15 Amps

Terminal: .064 (1.6) thick Brass, Tin Plate

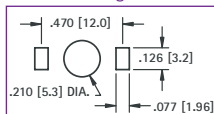
Screw: Brass, Nickel Plate

CAT. NO. 1205 (Supplied Less Screw)

CAT. NO. 1207 (Screw Supplied Unassembled)

CAT. NO. 1209 (Screw Installed)

Mounting Detail

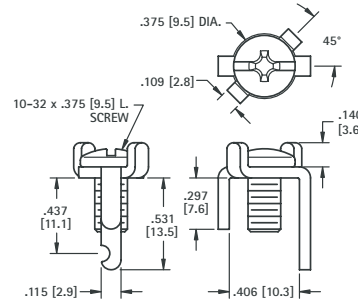


PRINCIPLE FEATURES

- Anti-rotation tab for use with spade terminals
- Below the board notched leg, to facilitate mechanical and solder connections
- Easy to connect using solid or stranded wire, crimp lugs or terminals
- Available with screw installed, unassembled, or without screw



10-32



SPECIFICATIONS

Rated: 30 Amps

Terminal: .064 (1.6) thick Brass, Tin Plate

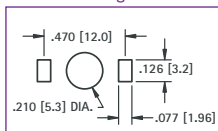
Screw: Steel, Nickel Plate

CAT. NO. 1206 (Supplied Less Screw)

CAT. NO. 1208 (Screw Supplied Unassembled)

CAT. NO. 1283 (Screw Installed)

Mounting Detail



Mouser Electronics

Authorized Distributor

Click to View Pricing, Inventory, Delivery & Lifecycle Information:

[Keystone Electronics:](#)

[7695](#) [7689](#) [7790](#)