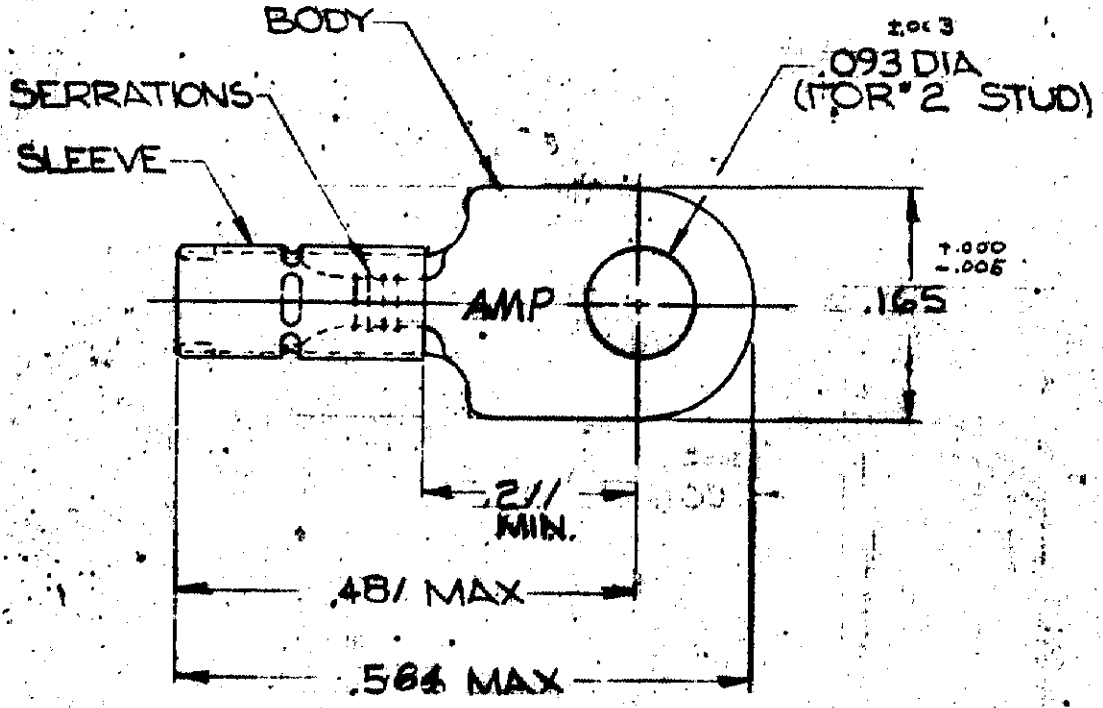


DRAWING MADE IN AMERICAN PROJECTION

LOC 6  
 PRINT DIST 141E

© 1953 BY AMP INCORPORATED. ALL RIGHTS RESERVED. AMP PRODUCTS COVERED BY PATENTS AND/OR PATENTS PENDING.

REVISIONS			
LTR	DESCRIPTION	DATE	APPROVED
A	REDRAWN & ADDED TAPE NO.	1-29-70	Jme
B	REVISED	4-23-71	Jme
C	ADDED STAMPING F-572	1-7-72	Jme
D	REVISED PER ECN F-606	7-31-72	Jme
E	REVISED PER P7940	11/10/74	EW
F	REV PER P-8352	5-19-81	Jme



FOR .050 TO .082 WIRE INSULATION DIA  
 TONGUE MATERIAL THICKNESS  $\pm .002$  = .018

321621	1-321621-0
PART NO.	PART NO ON TAPE

UNLESS OTHERWISE SPECIFIED DIMENSIONS ARE IN INCHES TOLERANCES ON: DECIMALS $\pm .008$ ANGLES $\pm 5^\circ$	CONTRACT NO.
	DR. <i>Stuyart</i> 1-26-70 CHK. <i>Am</i> 1-29-70 APPD. <i>Swabel</i> 1-30-70 REC. <i>Am</i> 1-30-70 DSGN APPD. OTHER APPD.
MATERIAL BODY & SLEEVE COPPER QQ-C-576 TIN PLATE MIL-T-10727 ANNEALED	

<b>AMP</b>		AMP INCORPORATED HARRISBURG, PENNSYLVANIA	
NAME WIRE TERMINAL DIAMOND GRIP - RECTANGULAR TONGUE WIRE SIZE: 26-22			
SIZE	CODE IDENT NO	NUMBER	
A	00779	321621	