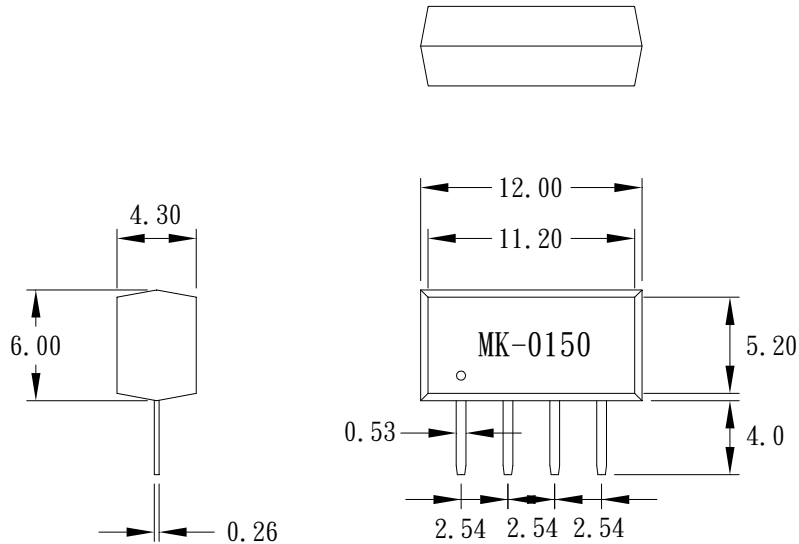


PRODUCT SPECIFICATION

DATE: 06/01/11'

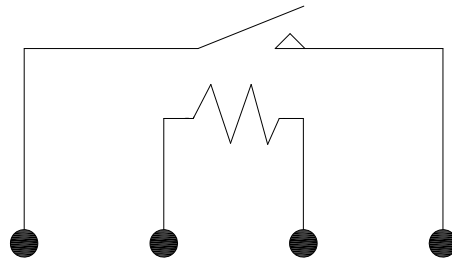
cosmo ELECTRONICS CORPORATION	REED SENSOR :	NO. 50R21012	REV.
	MK-0150	SHEET 1 OF 2	2

1. OUTSIDE DIMENSION : UNIT (mm)



TOLERANCE : $\pm 0.1\text{mm}$

2. SCHEMATIC : TOP VIEW



PRODUCT SPECIFICATION

DATE: 06/01/11'

cosmo ELECTRONICS CORPORATION	REED SENSOR :	NO. 50R21012	REV.
	MK-0150	SHEET 2 OF 2	2

3.0 SPECIFICATIONS :

3.1	Resistance		150 Ω	($\pm 10\%$)
3.2	Contact Rating		5 VA	(max)
3.3	Switching voltage		100 VDC	(max)
3.4	Switching current		0.5 A	(max)
3.5	Carry current		0.6 A	(max)
3.6	Breakdown voltage	(open contact)	150 VDC	(min)
3.7	Contact resistance	(initial)	100 m Ω	(max)
3.8	Operate time	(incl. bounce)	0.5 ms	(max)
3.9	Release time		0.2 ms	(max)
3.10	Insulation resistance		10^{10} Ω	(min)
3.11	Life expectancy	(5 VDC, 10mA)	5×10^6	
3.12	Total pull-in sensitivity		10-40 AT	(max)
3.13	Operating temp		-40 to 125°C	