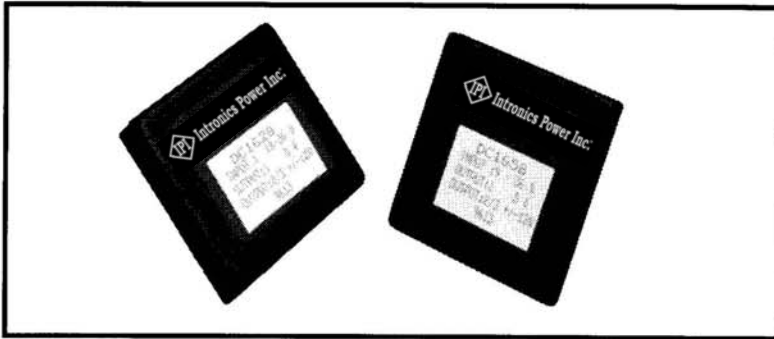




**Intronics
Power®**

DC1600 Series 15 Watt Triple Output DC-DC Converters



Features

- Full 2:1 / 4:1 input range
- Low profile 0.4" high
- Short Ckt & Overvoltage protected
- Fully regulated
- Low output ripple & noise
- High reliability
- Input/output isolation

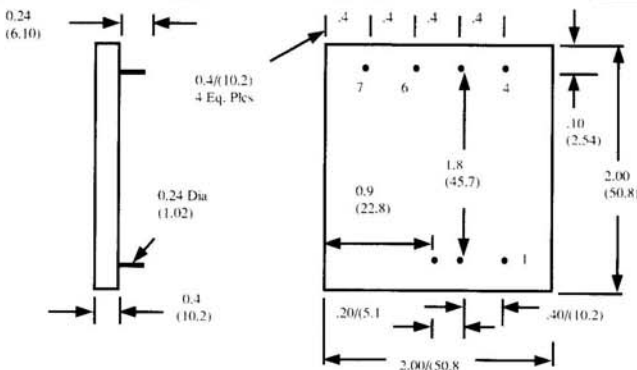
Input/Output Specifications

- Input filter: Pi Network
- Undervoltage Shutoff: 8Vdc
- Output voltage accuracy: +/- 3%
- Line regulation: +/- 1% max.
- Load regulation: +/- 2% max.
- Temp. coef.: +/- .05%/degree C
- Ripple & noise: 1% pp max.
(20MHz BW)
- Min. Load: 10% of Full Load
- Short circuit protection: foldback

General Specifications

- Efficiency: up to 81%
- Isolation voltage: 500 Vdc
- Isolation Resistance: 1000 Mohms
- Operating temp.: -25 to +71 °C
- Storage temp.: -55 to +125 °C
- Case type: Six-sided continuous metal shielding
- Size: 2" x 2" x .4"

Model No.	Input Voltage (Vdc)	Output Voltage (Vdc)	Output Current (mA)
DC1618	9-18	5 / ±12	1500 / ±310
DC1619	9-18	5 / ±15	1500 / ±250
DC1617	9-18	+5 / +12 / -5	1500 / 310 / 500
DC1628	18-36	5 / ±12	1500 / ±310
DC1629	18-36	5 / ±15	1500 / ±250
DC1627	18-36	+5 / +12 / -5	1500 / 310 / 500
DC1638	36-72	5 / ±12	1500 / ±310
DC1639	36-72	5 / ±15	1500 / ±250
DC1637	36-72	+5 / +12 / -5	1500 / 310 / 500
DC1658	9-36	5 / ±12	1500 / ±310
DC1659	9-36	5 / ±15	1500 / ±250
DC1657	9-36	+5 / +12 / -5	1500 / 310 / 500
DC1668	20-72	5 / ±12	1500 / ±310
DC1669	20-72	5 / ±15	1500 / ±250
DC1667	20-72	+5 / +12 / -5	1500 / 310 / 500



PIN	Function
1	Remote ON/OFF
2	- Vin (input)
3	+ Vin (input)
4	- Output (V3 output)
5	Common (Gnd)
6	+5V output (V1)
7	+ Output (V2 output)

Due to ongoing product improvement, specifications are subject to change.