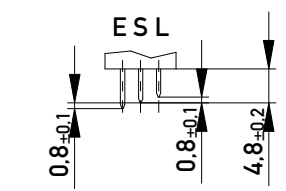
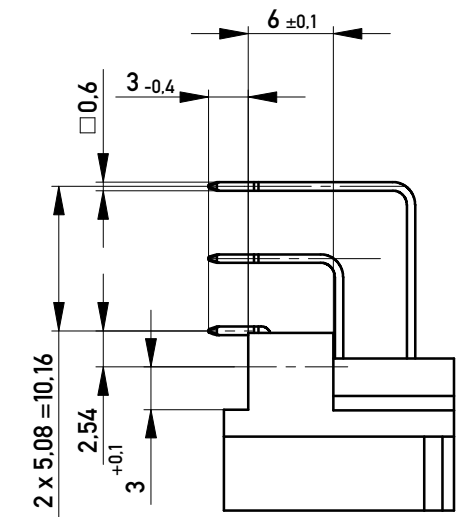


Stecklänge / mating length

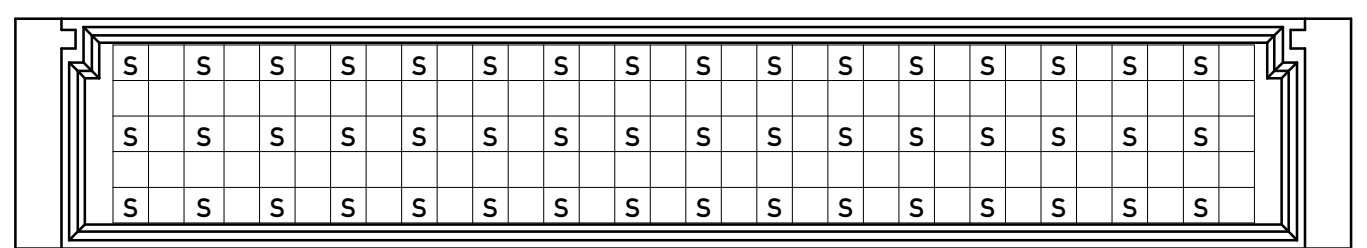


E = early mate, late break / voreilend
 S = standard
 L = late mate, early break / nacheilend

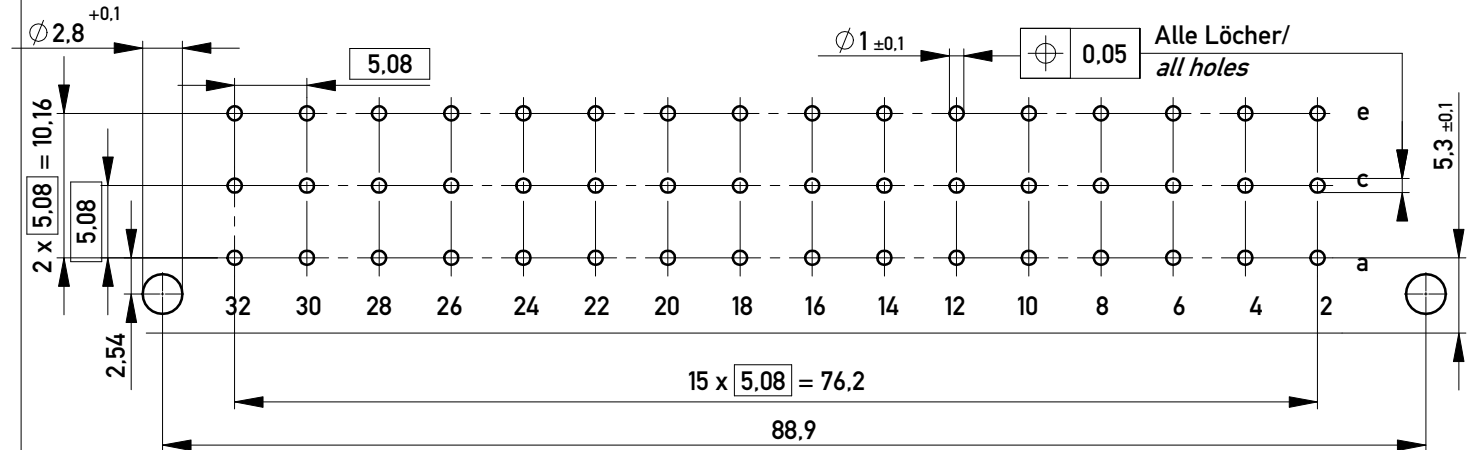


Bestückungsplan / contact layout

32 30 28 26 24 22 20 18 16 14 12 10 8 6 4 2



Leiterplatten-Lochbild / PCB drillhole pattern



Steckseite ACE / Anschlussseite ACE / contact side ACE / terminal Side ACE
 Lötanschluss 0,6 x 0,6 / solder terminal 0,6 x 0,6
 Isolierwerkstoff / housing material : PBT GF 30
 Bauart 4 / Type 4
 Anforderungsstufe 2 = 400 Steckzyklen / performance class 2= 400 mating cycles
 Fehlende Maße und Angaben gemäss IEC 60603-2 / DIN EN 60603-2
 Missing information and dimensions according to IEC 60603-2

Information: All rights reserved. Only for Information. To ensure that this is the latest version of this drawing, please contact one of the ERNI companies before using.	Tolerances All Dimensions in mm	Scale 2:1
	Designation Messerleiste E48 Löt Male Con. E48 Solder	
www.ERNI.com	100700760003	K A3
a Index	20.08.2010 Date	Class STVE

Copyright by ERNI GmbH
Proprietary notice pursuant to ISO 16016, to be observed.