



PRODUCT SPECIFICATION

REV A January 2011

Oscilent Controlled Document

| Ordering Code / Part Number | Product Description |
|-----------------------------|---|
| 813-SL67.5M-20A | 67.50MHz IF SAW Filter 20.30MHz Bandwidth |

Specification Contents

- o Mechanical Dimensions
- o Test Circuit
- o Maximum Ratings
- o Electrical Specification
- o Frequency Response
- o Smith Chart
- o VSWR

Notes

- o Electrostatic Sensitive Device (ESD) 
- o Avoid excessive ultrasonic exposure
- o Solderability compatible with JEDEC J-STD-020C Pb-free process, 260°C peak reflow temperature
- o This product complies with EU directive 2002/95/EC (RoHS compliance)



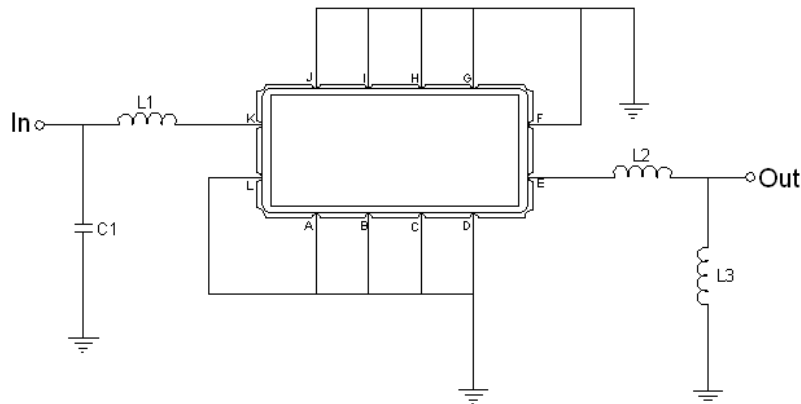


Mechanical Dimensions (mm)



| Pin Description | |
|------------------------------|--------|
| A, B, C, D, F, G, H, I, J, L | Ground |
| K | Input |
| E | Output |

Test Circuit



| Test Fixture & Values | |
|-----------------------|-------------------------|
| Input | L1 = 120 nH, C1 = 75 pF |
| Output | L2 = 33 nH, L3 = 120 nH |
| Source/Load Impedance | 50 Ω |



Maximum Ratings

| Parameters Description | Unit | Minimum | Typical | Maximum |
|--|------|---------|---------|---------|
| Operating Temperature Range | °C | -20 | - | 70 |
| Storage Temperature Range | °C | -40 | - | 85 |
| Maximum DC Voltage | V | - | - | 10 |
| Maximum Input Power | dBm | - | - | 10 |
| Source Impedance (single ended) ⁽¹⁾ | Ω | - | 50 | - |
| Load Impedance (single ended) ⁽¹⁾ | Ω | - | 50 | - |

Notes: With Matching Network (Ref. Testing Environment Circuit as shown above).

Those impedances could be modified with different impedance values and/or structures, if necessary.

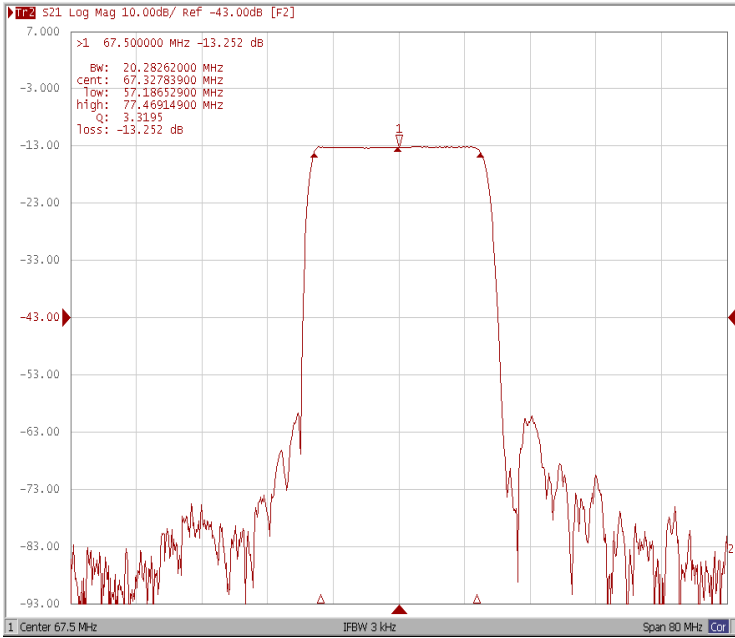
Electrical Specification

| Parameters Description | Unit | Minimum | Typical | Maximum |
|-------------------------------------|--------|---------|---------|---------|
| Center Frequency (Fo) | MHz | - | 67.50 | - |
| Insertion Loss at Fo | dB | - | 13.20 | 15.50 |
| Group Delay Variation at Fo±9.52MHz | ns | - | 35 | 60 |
| Absolute Delay Time at Fo | us | - | 1.04 | - |
| Amplitude Ripple at Fo±9.52MHz | dB | - | 0.38 | 0.90 |
| Bandwidth at -1dB | MHz | - | 20.30 | - |
| Bandwidth at -3dB | MHz | 20.90 | 21.05 | - |
| Bandwidth at -40dB | MHz | - | 24.30 | 24.60 |
| Relative Attenuation | | | | |
| Lower Sidelobe | dB | 40 | 47 | - |
| Upper Sidelobe | dB | 40 | 47 | - |
| Temperature Coefficient | ppm/°C | - | -86 | - |

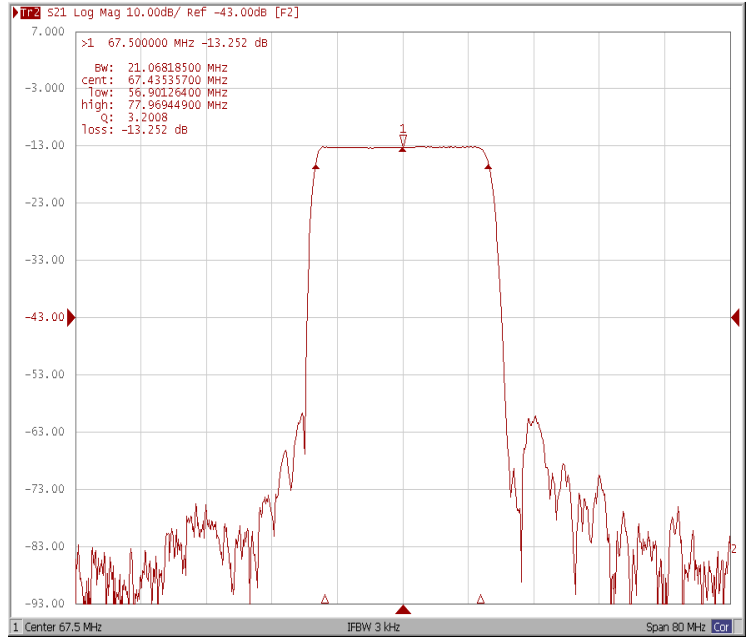


Frequency Response

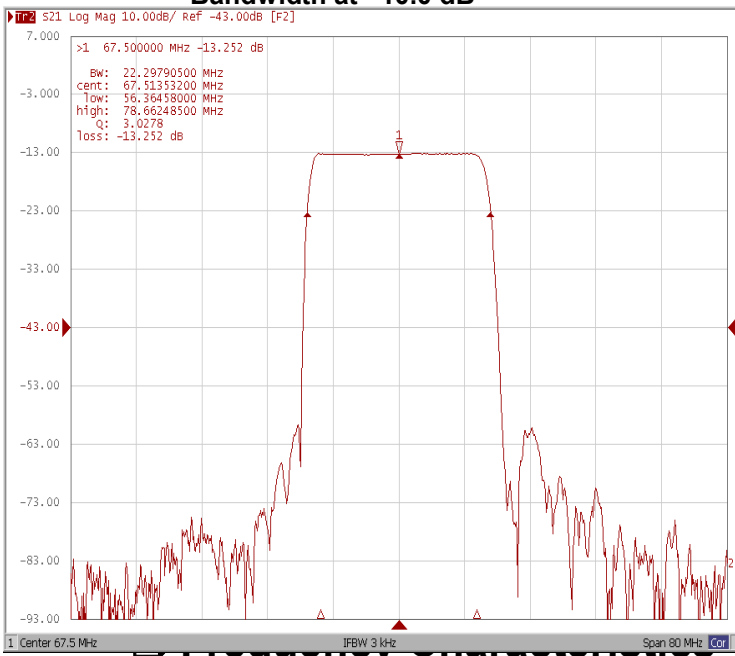
Bandwidth at -1.0 dB



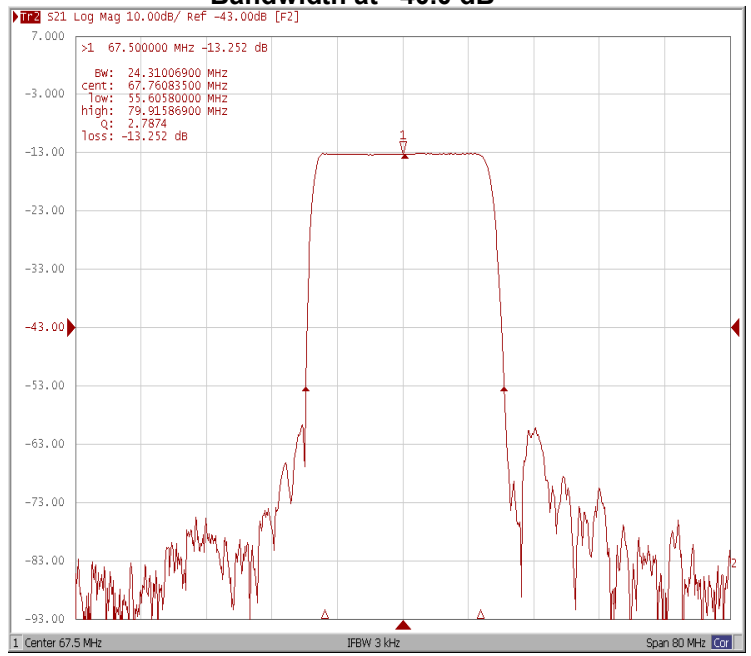
Bandwidth at -3.0 dB



Bandwidth at -10.0 dB

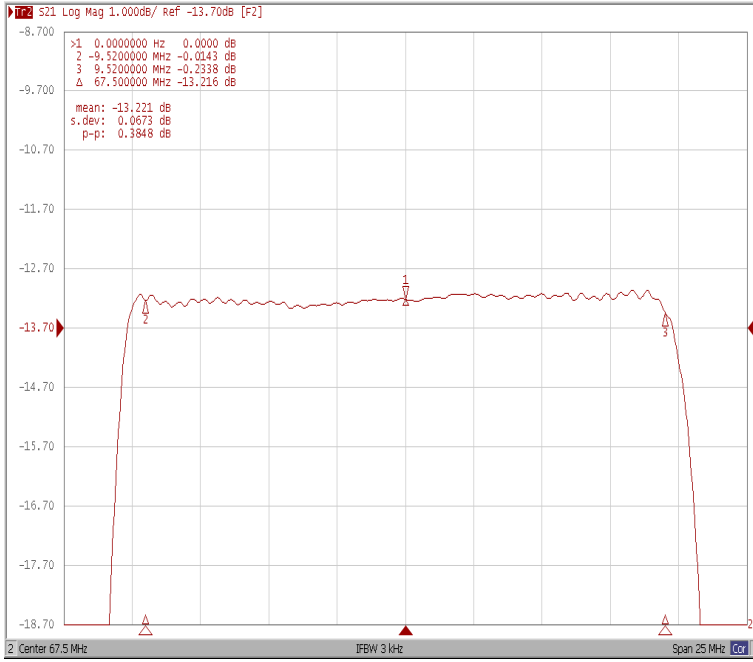


Bandwidth at -40.0 dB

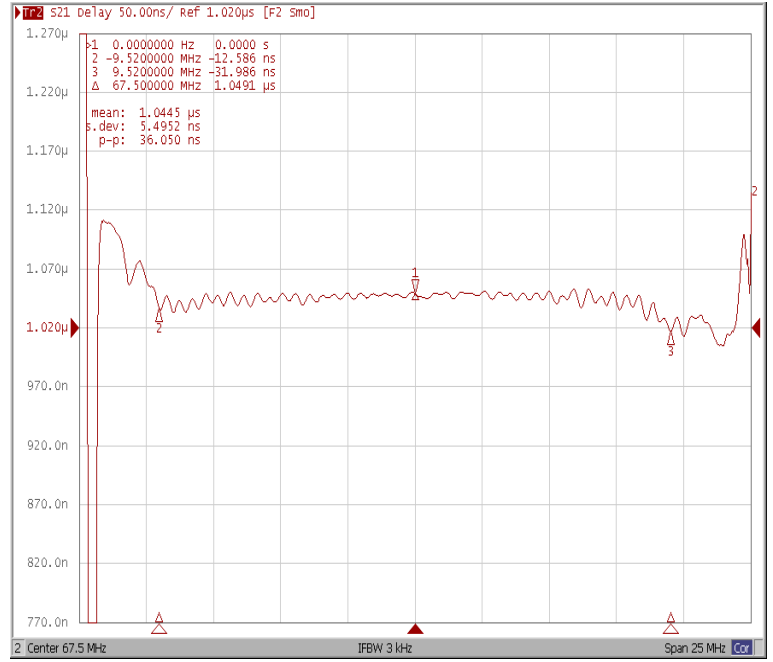




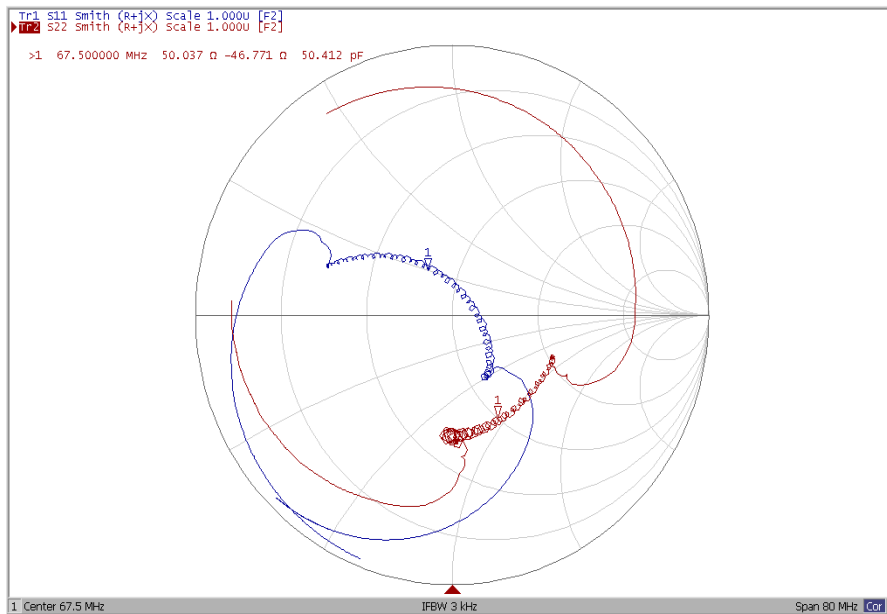
Ripple Variation at $F_o \pm 9.52\text{MHz}$



Group Delay Variation at $F_o \pm 9.52\text{MHz}$



Smith Chart





VSWR

