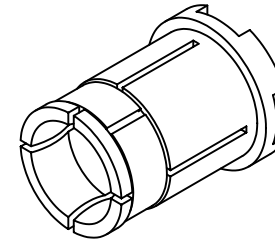


NOTES: UNLESS OTHERWISE SPECIFIED

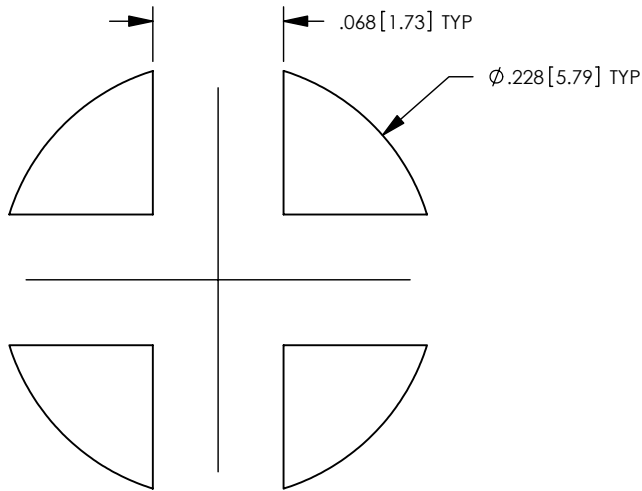
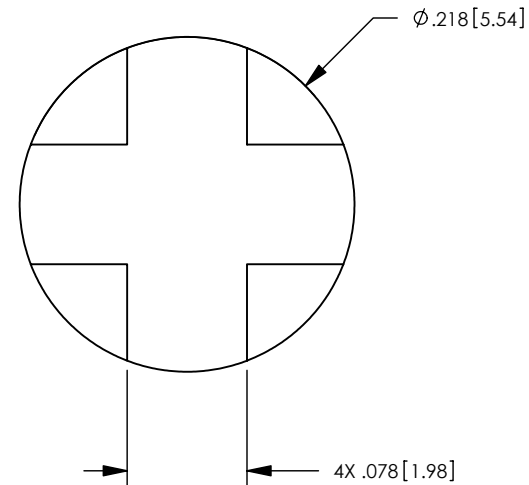
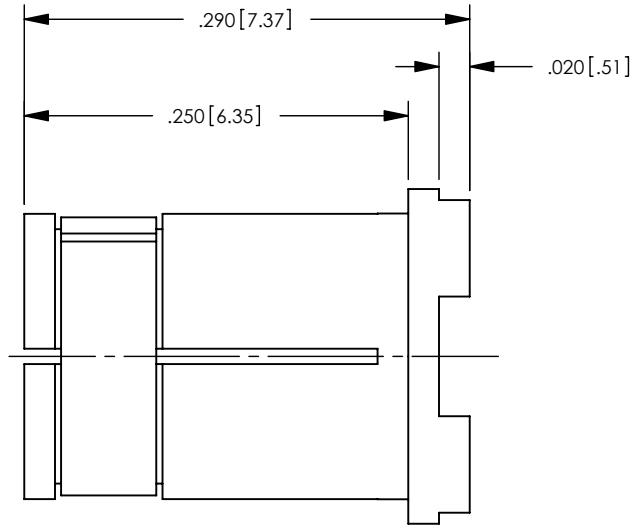
1. MATERIAL SPECIFICATIONS:  
 BODY: BRASS PER ASTM B16  
 RETAINING RING: COPPER ALLOY

2. FINISH SPECIFICATIONS:  
 BODY: .000030 MIN GOLD PER ASTM B488 OVER  
 .000080 MIN NICKEL PER AMS-QQN-290 (RoHS)  
 RETAINING RING: .000100 MIN NICKEL PER AMS-QQ-N-290  
 OVER COPPER FLASH PER ASTM B734 (RoHS)

REV	DESCRIPTION	BY DATE	APPD
N	REVISED PER ER7306	CWB 04/14/08	CWB



ISOMETRIC VIEW  
 SCALE: 4:1



RECOMMENDED PAD LAYOUT

CATALOG P/N: 01127

PER ASME Y14.5M-1994 UNLESS OTHERWISE SPECIFIED: DIMENSIONS ARE IN INCHES [MM] TOLERANCES: DECIMAL: .XX [X.X] ± .01 [0.3] .XXX [X.XX] ± .005 [0.13] .XXXX [X.XXX] ± .XXXX ANGLES: ± 2° SCALE: 8:1				 Winchester Electronics Corporation 62 Barnes Industrial Road North Wallingford, Connecticut 06492	
CUSTOMER DRAWING			 POWER SNAP SURFACE MOUNT 40 AMPS		
DRAWN EJW	DATE 06/10/99	APPROVED JD	DATE 06/10/99	A	SD01127
APPROVED XXX	DATE XX/XX/XX	APPROVED XXX	DATE XX/XX/XX		
				SHT 1 OF 1	REV N