



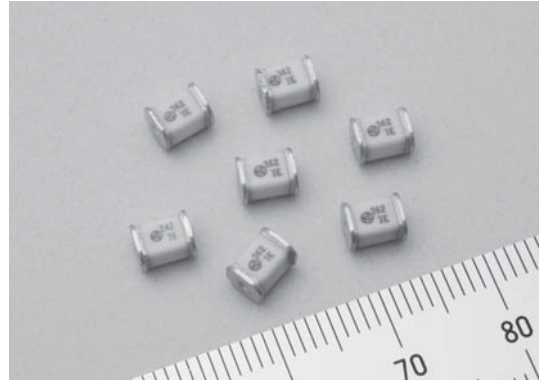
RHCA5039 series is suitable for products that need DC insulation resistance test on Line-FG, SG of a communications / signal line. Impulse current capacity is 2,000A 8/20 μ s.



Safety Standard		File No.
UL	:UL1449	E322107
cUL	:C22.2 No.8	

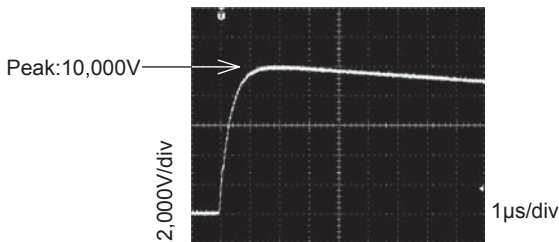
Features

- Chip surge absorber for protection from indirect lighting surge, adaptable to high density surface mount technology
- Impulse current capacity 2,000A 8/20 μ s
- Small electrostatic capacity(Maximum 0.6pF)

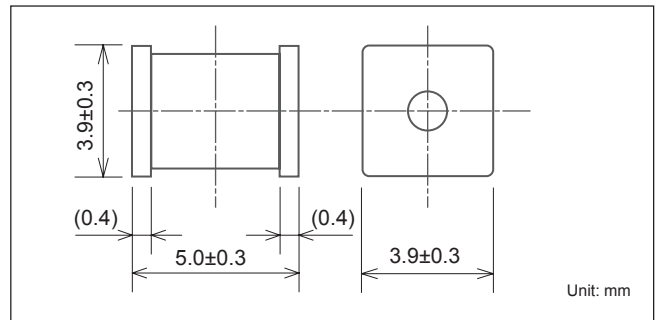


Impulse Absorption Characteristics

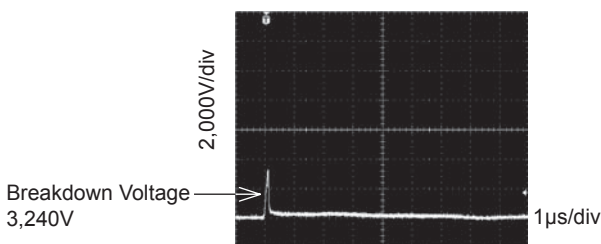
Impulse waveform 1.2/50 μ s-10,000V



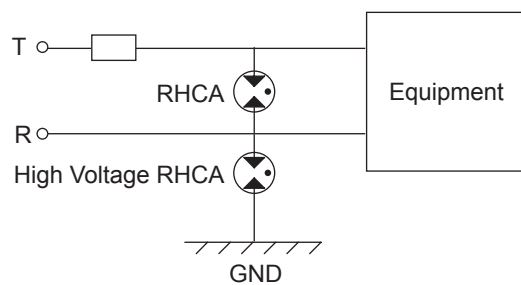
Dimensions



RHCA-242H53U



Application (Example: Telecommunication Line)

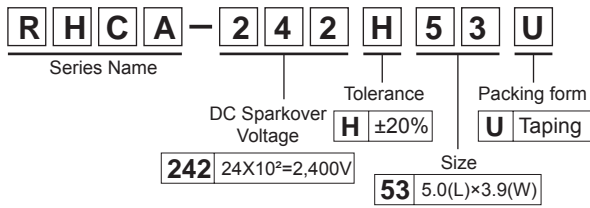


Electrical Specifications

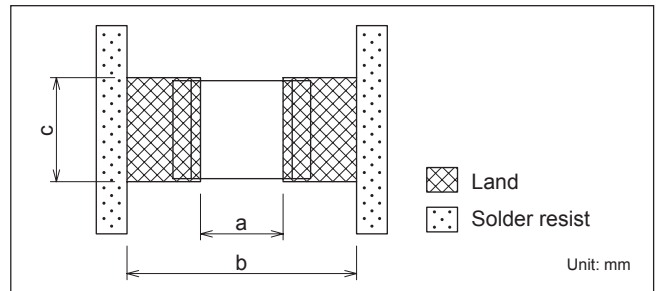
Safety Standard	Model Number	DC Sparkover voltage (V) $\pm 20\%$	Insulation Resistance	Capacitance 1MHz	Impulse Life Test	Impulse Discharge Current	Withstand Voltage Test 50/60Hz
cUL US	RHCA-242H53U *1	2,400	1,000M Ω Min.(DC500V)	0.6pF Max.	8/20 μ s 100A 300 times	8/20 μ s 2,000A	AC1,000V-60sec
	RHCA-302H53U *1,2	3,000					AC1,200V-3sec
	RHCA-362H53U *1,2	3,600					AC1,500V-60sec
							AC1,500V-60sec
							AC1,800V-3sec

*1 Rated voltage AC125V: Approved if it is connected to UL approved varistor (V1.0mA \geq 270V, D \geq ϕ 7mm).
 *2 Rated voltage AC250V: Approved if it is connected to UL approved varistor (V1.0mA \geq 470V, D \geq ϕ 7mm).

• Model numbering system

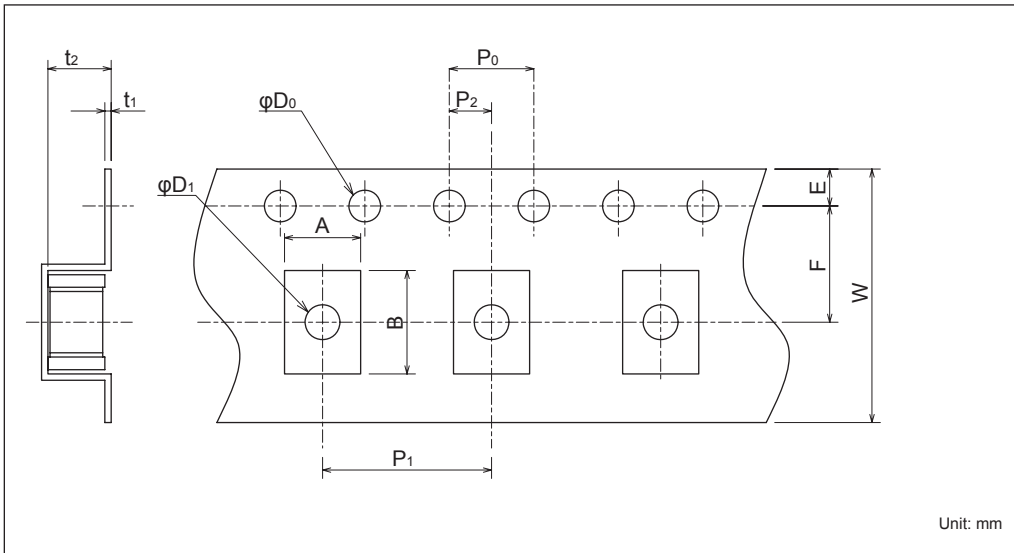


• Recommended Land Pattern



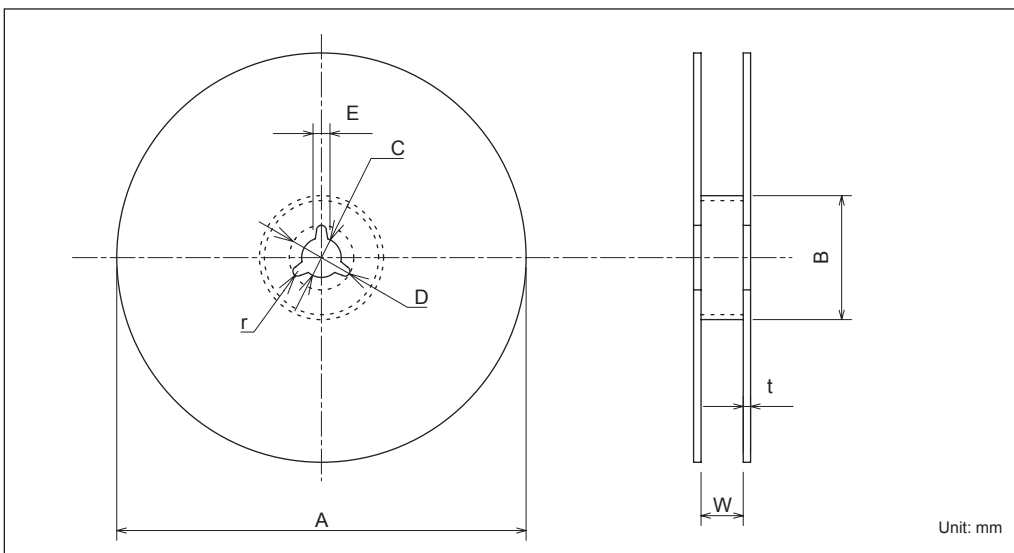
	Dimensions (mm)		
	a	b	c
Reflow Soldering	3.7	6.5	4.3

• Taping Dimensions



Dimensions (mm)	
A	4.5±0.3
B	5.6±0.3
W	12.0±0.3
F	5.5±0.1
E	1.75±0.1
P1	8.0±0.1
P2	2.0±0.1
P0	4.0±0.1
D0	φ 1.55±0.1
D1	φ 1.5 min.
t1	0.40±0.2
t2	4.3±0.2

• Reel Dimensions (2,500pcs per one reel)



Dimensions (mm)	
A	φ 380±3
B	φ 80±2
C	φ 13.0±0.5
D	φ 21±1
E	2±1
W	13.5±2.0
t	2.0±0.5
r	1.0