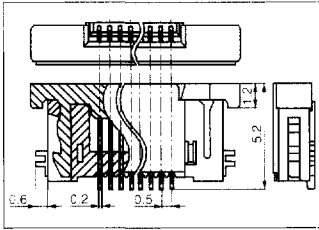
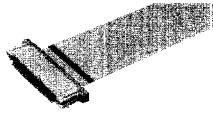


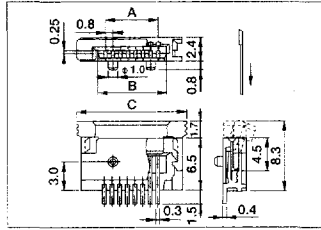
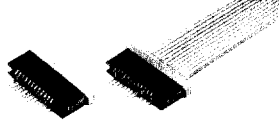
## FP-50 Series (Pitch 0.5mm)



FPC CONNECTOR (SMT TYPE)  
FPCコネクタ (SMT対応)

- Rating: 0.5A 50V AC/DC
- Contact Resistance: 30mΩ max.
- Insulation Resistance: 100MΩ min. at 100V DC
- Withstanding Voltage: 500V AC for one minute
- Operating Temperature: -25°C ~ +85°C
- Part No: CFP 55□□-□□01  
CFP 57□□-□□01

## FP-80 Series (Pitch 0.8mm)

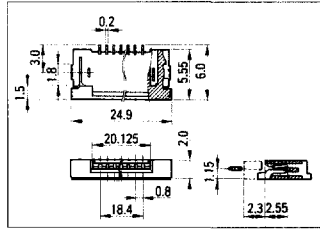
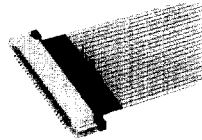


FPC CONNECTOR (SMT TYPE)  
FPCコネクタ (SMT対応)

- Rating: 0.5A 50V AC/DC
- Height: from PCB is only 2.5mm
- ZIF Structure

No. Posi	Part No.	Dimension		
		A	B	C
12	CFP6512-01□□	8.8	10.5	15.3
16	CFP6516-01□□	12.0	13.7	18.5
18	CFP6518-01□□	13.6	15.3	20.1
24	CFP6524-01□□	18.4	20.1	24.9
30	CFP6530-01□□	23.2	24.9	29.7

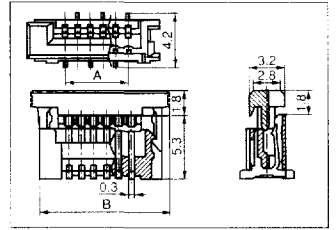
## FP-8 Series (Pitch 0.8mm)



FPC CONNECTOR (SMT TYPE)  
FPCコネクタ (SMT対応)

- Rating: 0.5A 50V AC/DC
- Contact Resistance: 30mΩ max.
- Insulation Resistance: 1000MΩ min. at 500V DC
- Withstanding Voltage: 500V AC for one minute
- Operating Temperature: -25°C ~ +70°C
- Part No: CFP 06□□-03□□

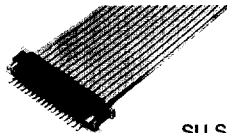
## CFP61□□-0101 (Pitch 1.0mm)



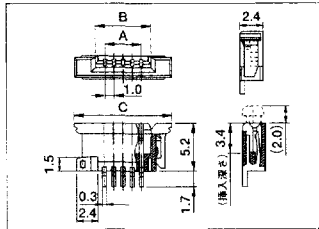
FPC CONNECTOR (SMT TYPE)  
FPCコネクタ (SMT対応)

- Rating: 0.5A 50V AC/DC
- Contact Resistance: 30mΩ max.
- Insulation Resistance: 1000MΩ min. at 500V DC
- Withstanding Voltage: 500V AC for one minute
- Operating Temperature: -25°C ~ +70°C

## FP-10<sup>SU</sup> Series (Pitch 1.0mm)



SU Series

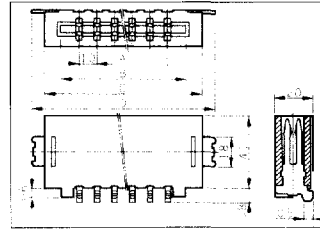
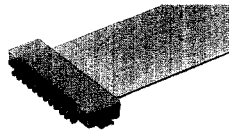


FPC CONNECTOR (SMT TYPE)  
FPCコネクタ (SMT対応)

- Rating: 0.5A 50V AC/DC
- Contact Resistance: 30mΩ max.
- Insulation Resistance: 1000MΩ min. at 500V DC
- Withstanding Voltage: 500V AC for one minute
- Operating Temperature: -25°C ~ +70°C

No. Posi	Part No.		Dimensions		
	SU Series	SL Series	A	B	C
4	CFP0504-02□□	CFP1504-01□□	3.0	5.1	9.7
5	CFP0505-02□□	CFP1505-01□□	4.0	6.1	10.7
6	CFP0506-02□□	CFP1506-01□□	5.0	7.1	11.7
7	CFP0507-02□□	CFP1507-01□□	6.0	8.1	12.7
8	CFP0508-02□□	CFP1508-01□□	7.0	9.1	13.7
9	CFP0509-02□□	CFP1509-01□□	8.0	10.1	14.7
10	CFP0510-02□□	CFP1510-01□□	9.0	11.1	15.7
11	CFP0511-02□□	CFP1511-01□□	10.0	12.1	16.7
12	CFP0512-02□□	CFP1512-01□□	11.0	13.1	17.7
13	CFP0513-02□□	CFP1513-01□□	12.0	14.1	18.7
14	CFP0514-02□□	CFP1514-01□□	13.0	15.1	19.7
15	CFP0515-02□□	CFP1515-01□□	14.0	16.1	20.7
16	CFP0516-02□□	CFP1516-01□□	15.0	17.1	21.7
17	CFP0517-02□□	CFP1517-01□□	16.0	18.1	22.7
18	CFP0518-02□□	CFP1518-01□□	17.0	19.1	23.7
19	CFP0519-02□□	CFP1519-01□□	18.0	20.1	24.7
20	CFP0520-02□□	CFP1520-01□□	19.0	21.1	25.7
21	CFP0521-02□□	CFP1521-01□□	20.0	22.1	26.7
22	CFP0522-02□□	CFP1522-01□□	21.0	23.1	27.7
23	CFP0523-02□□	CFP1523-01□□	22.0	24.1	28.7
24	CFP0524-02□□	CFP1524-01□□	23.0	25.1	29.7
25	CFP0525-02□□	CFP1525-01□□	24.0	26.1	30.7
26	CFP0526-02□□	CFP1526-01□□	25.0	27.1	31.7
28	CFP0528-02□□	CFP1528-01□□	27.0	29.1	33.7
29	CFP0529-02□□	CFP1529-01□□	28.0	30.1	34.7
30	CFP0530-02□□	CFP1530-01□□	29.0	31.1	35.7

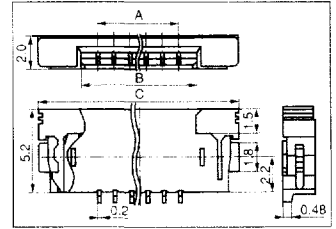
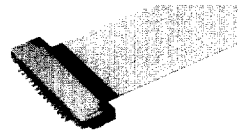
## FF-10LP Series (Pitch 1.0mm)



FFC CONNECTOR (SMT TYPE)  
FFCコネクタ (SMT対応)

- Rating: 0.5A 50V AC/DC
- Contact Resistance: 30mΩ max.
- Insulation Resistance: 1000MΩ min. at 500V DC
- Operating Temperature: -25°C ~ +85°C

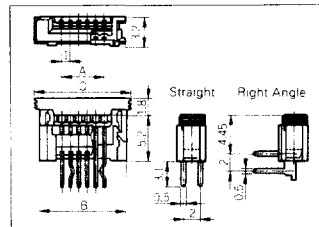
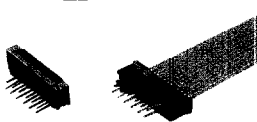
## FP-10LP Series (Pitch 1.0mm)



FPC CONNECTOR (SMT TYPE)  
FPCコネクタ (SMT対応)

- Rating: 1A 50V AC/DC
- Contact Resistance: 30mΩ max.
- Insulation Resistance: 1000MΩ min. at 500V DC
- Withstanding Voltage: 500V AC for one minute
- Operating Temperature: -25°C ~ +70°C
- Part No: CFP 20□□-0201

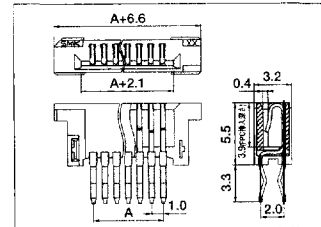
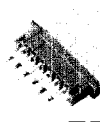
## FP-10 Series (Pitch 1.0mm)



FPC CONNECTOR  
FPCコネクタ (1.0mmピッチ)

- Rating: 0.5A 50V AC/DC
- Contact Resistance: 30mΩ max.
- Insulation Resistance: 1000MΩ min. at 500V DC
- Withstanding Voltage: 500V AC for one minute
- Operating Temperature: -25°C ~ +85°C
- Part No: CFP 01□□-01□□  
CFP 03□□-01□□

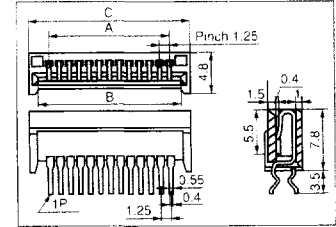
## FC-10 Series (Pitch 1.0mm)



FFC CONNECTOR  
FFCコネクタ (1.0mmピッチ)

- Rating: 0.5A 50V AC/DC
- Contact Resistance: 30mΩ max.
- Insulation Resistance: 1000MΩ min. at 500V DC
- Withstanding Voltage: 500V AC for one minute
- Operating Temperature: -25°C ~ +70°C

## FF Series (Pitch 1.25mm)



FPC CONNECTOR  
FPCコネクタ (1.25mmピッチ)

- Rating: 1A 200V AC
- Contact Resistance: 30mΩ max.
- Insulation Resistance: 500MΩ min. at 250V DC
- Withstanding Voltage: 500V AC for one minute
- Applicable FFC Thickness: 0.3mm
- Part No: CFF 11□□-01□□  
CFF 13□□-01□□

DIP TYPE: CFF61□□-0101

SMT TYPE: CFF23□□-01□□

〈レバートリー〉

図番	形状	接触面
CFF23□□-01□□	SMT-L	上接点
CFF43□□-01□□	SMT-逆L	下接点
CFF41□□-01□□	SMT-S	—
CFF51□□-0101	DIP-S	—
CFF61□□-0101	DIP-S-逆組	—
CFF33□□-0101	DIP-L	上接点
CFF73□□-0101	DIP-L-逆組	上接点
CFF83□□-0101	DIP-逆L	下接点