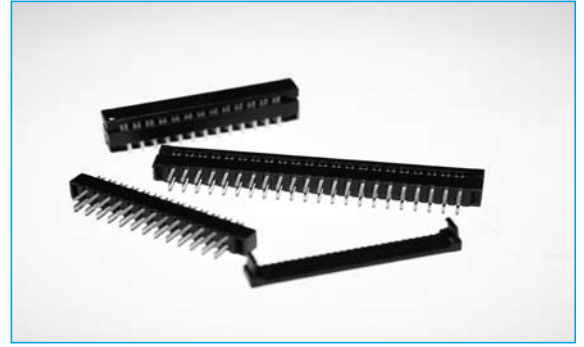




IDC

- Industry compatible
- Competitively priced
- Various Plating contacts available
- 2.0mm pitch

IDC DIP PLUG (TRANSITION) 2.0mm



SPECIFICATION

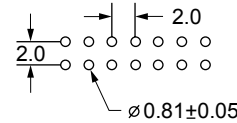
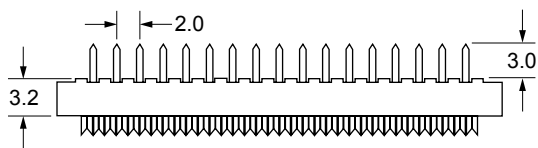
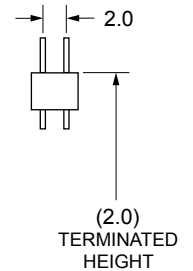
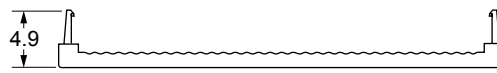
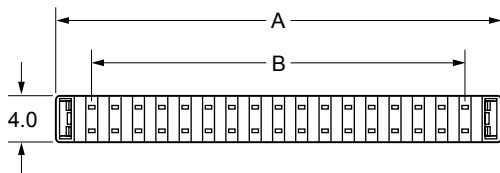
Material & Finish

Contact Material:	Phosphor Bronze
Insulator Material:	PBT, glass reinforced, rated UL 94V-0
Current Rating:	1 Amp
Contact Resistance:	30M Ω Max.
Insulator Resistance:	3000M Ω Min.
Dielectric Withstanding Voltage:	250V AC for One Minute
Operating Temperature:	-40°C to + 105°C

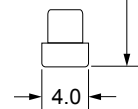
Terminated with 1.00mm pitch flat ribbon cable

Position	A	B
8	12.20	6.00
10	14.20	8.00
12	16.20	10.00
14	18.20	12.00
16	20.20	14.00
20	24.20	18.00
22	26.20	20.00
24	28.20	22.00
26	30.20	24.00
30	34.20	28.00
34	38.20	32.00
40	44.20	38.00
44	48.20	42.00
50	54.20	48.00
68	72.20	66.00

OUTLINE DRAWING



RECOMMENDED P.C.B LAYOUT



ORDERING INFORMATION

DBC	IDC	A11A	34	B	G	1
Dubilier Connectors	IDC Connector	Series	N° of Ways	Contact Material	Contact Plating	Colour
			08=08way 10=10way 12=12way 14=14way 20=20way 22=22way 24=24way	B=Phosphor Bronze	G= Gold Flash S=Selective *=Other Plating available	1=Black
			26=26way 30=30way 34=34way 40=40way 44=44way 50=50way 68=68way			

SECTION 15