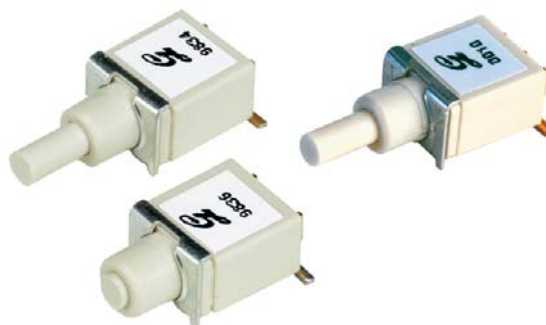


SERIES 38B AND 38H

Sealed Surface Mount Subminiature Pushbutton Switches

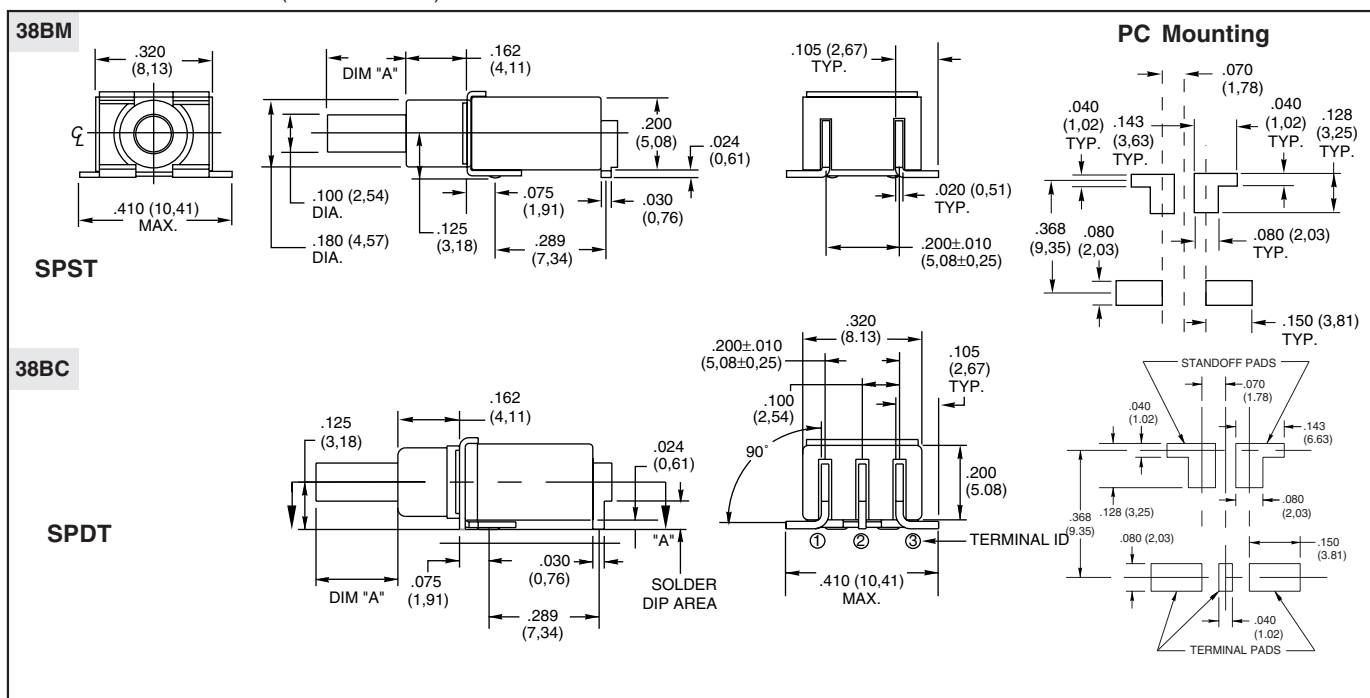
FEATURES

- Surface Mount Process Compatible
- Sealed Construction
- Solder-Coated Terminals
- Tape and Reel Packaging
- SPST and SPDT Momentary Contact

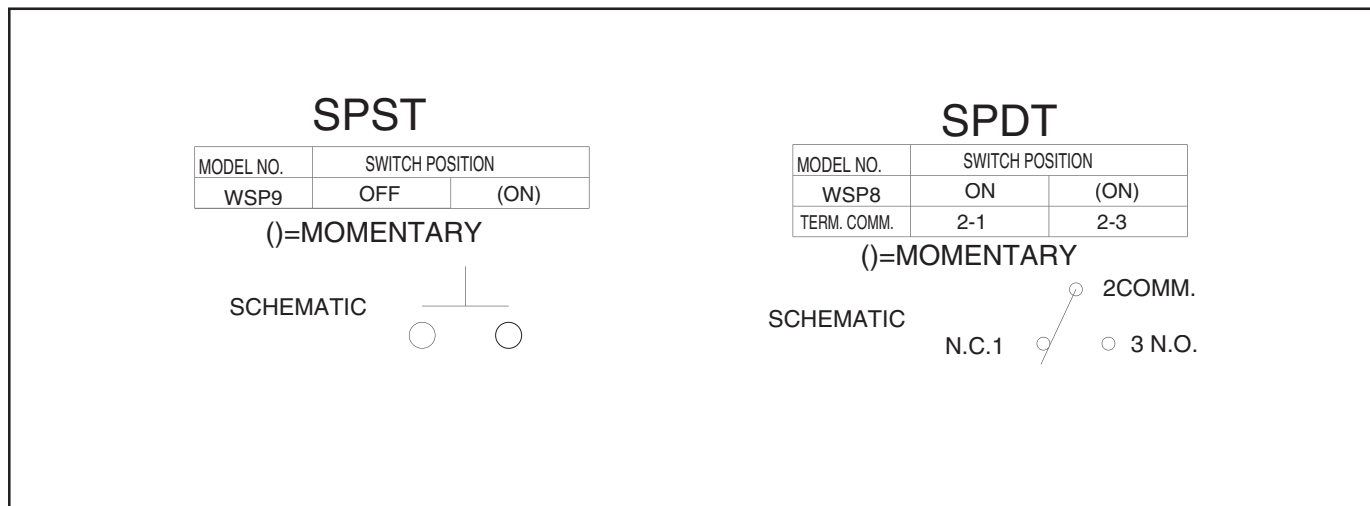


SERIES 38B

DIMENSIONS In inches (and millimeters)



Circuitry



Pushbutton Switches

SERIES 38B

SPECIFICATIONS

Rating Criteria

Operating Life: 80,000 make-and-break cycles at full load

Contact Rating (resistive load):

Gold Contacts: 0.4 VA maximum at 20 Vac or Vdc maximum

Contact Resistance: Below 20 milliohms typical initial at 2-4 Vdc, 100 mA

Insulation Resistance: 1000 megaohms min.

Voltage Breakdown: 1000 Vrms minimum at sea level

Operating Temperature: -30°C to +85°C

Solderability: Per MIL-STD-202F, Method 208D, or EIA RS-186E Method 9 (1 hour steam aging)

Materials and Finishes

Base and Cover: Thermoplastic (UL 94V-0)

Plunger: Thermoplastic (UL 94V-0), with standard internal o-ring seal

Terminals: Copper alloy, solder plate over nickel plate, solder-coated

Spring: Plated Music Wire

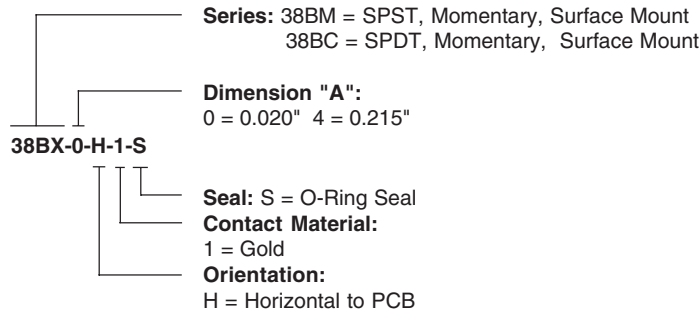
Contact System: Copper alloy, gold plate over nickel plate, solder-coated

Switch Support: Brass, tin-plated

Available from your local Grayhill Distributor.

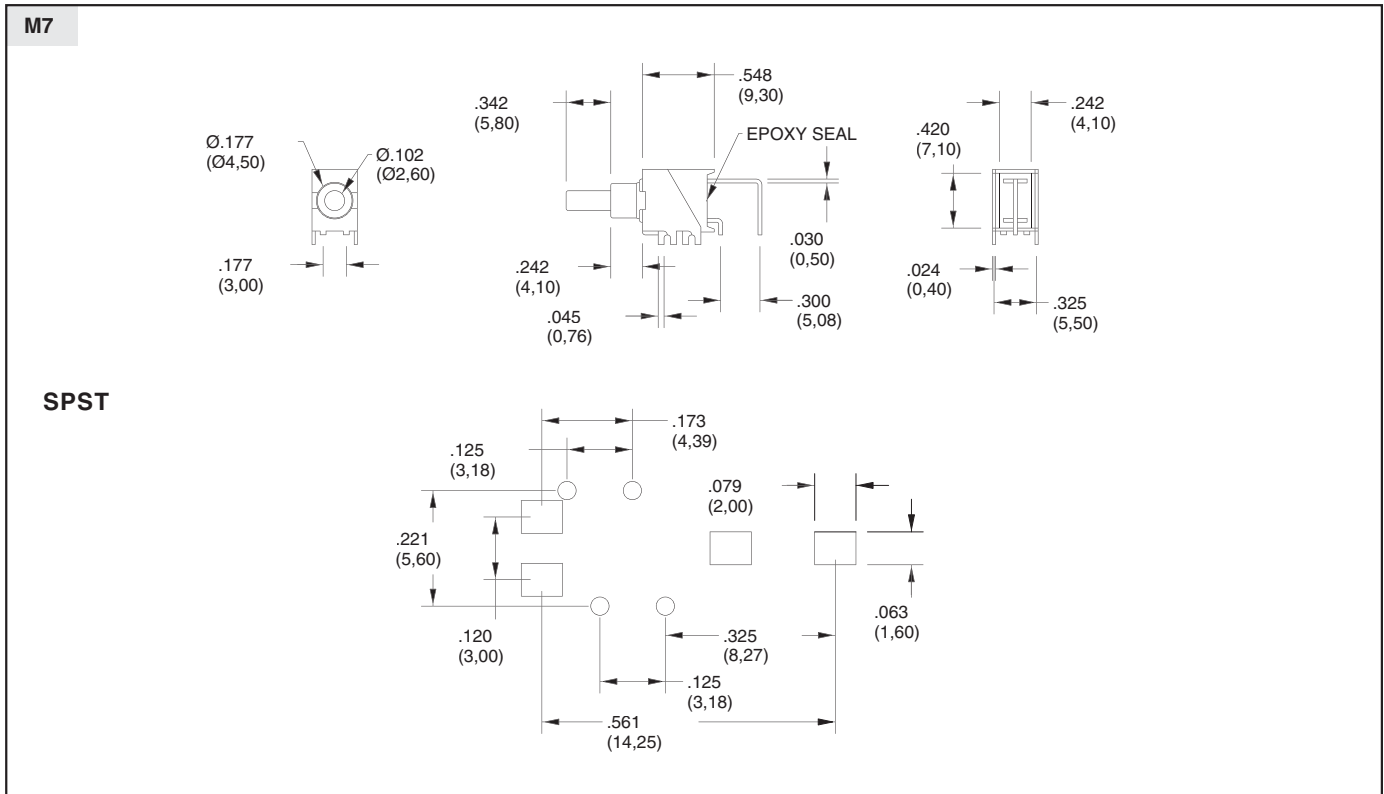
For prices and discounts, contact a local Sales Office, an authorized local Distributor or Grayhill.

ORDERING INFORMATION



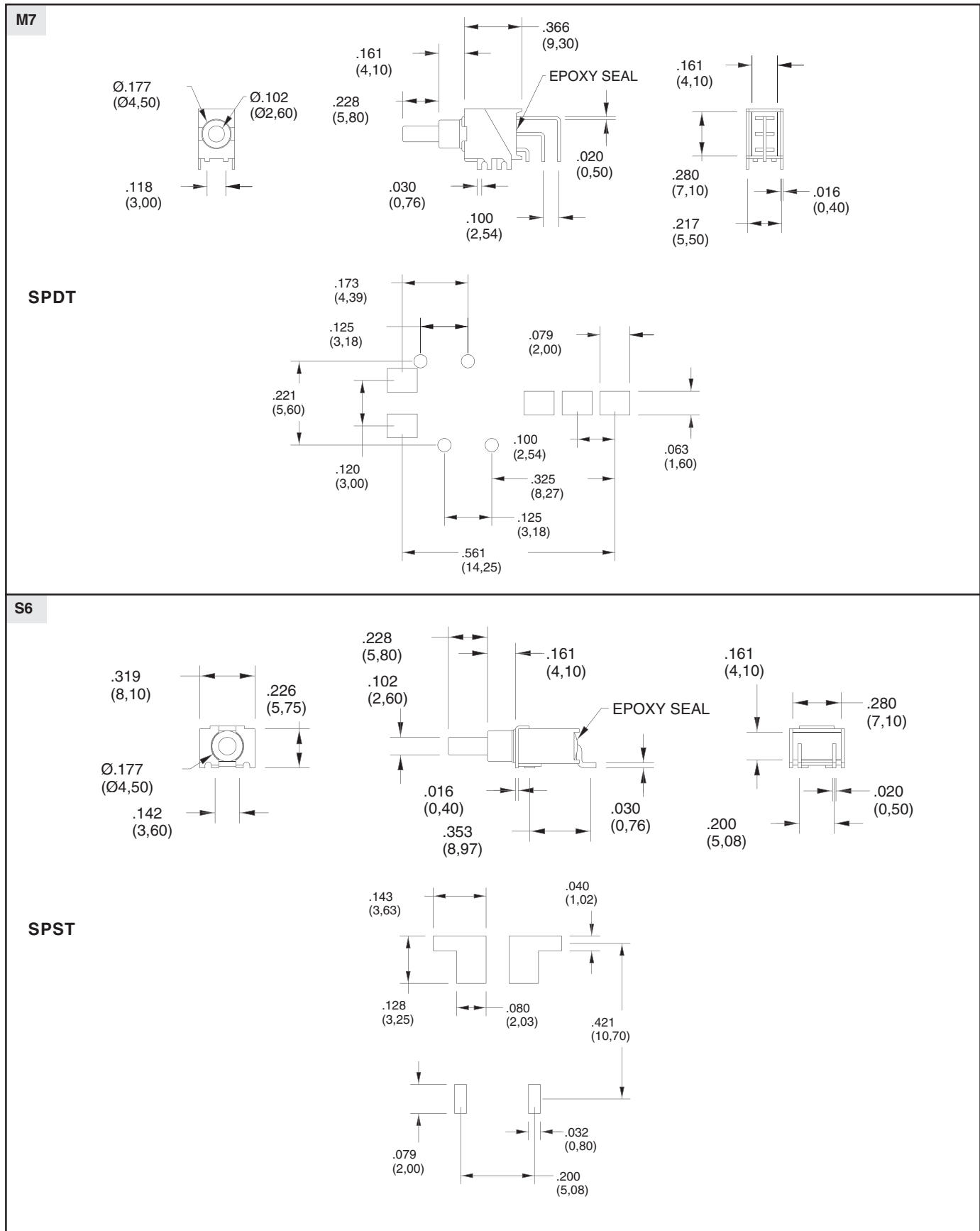
SERIES 38H

DIMENSIONS In inches (and millimeters)



SERIES 38H

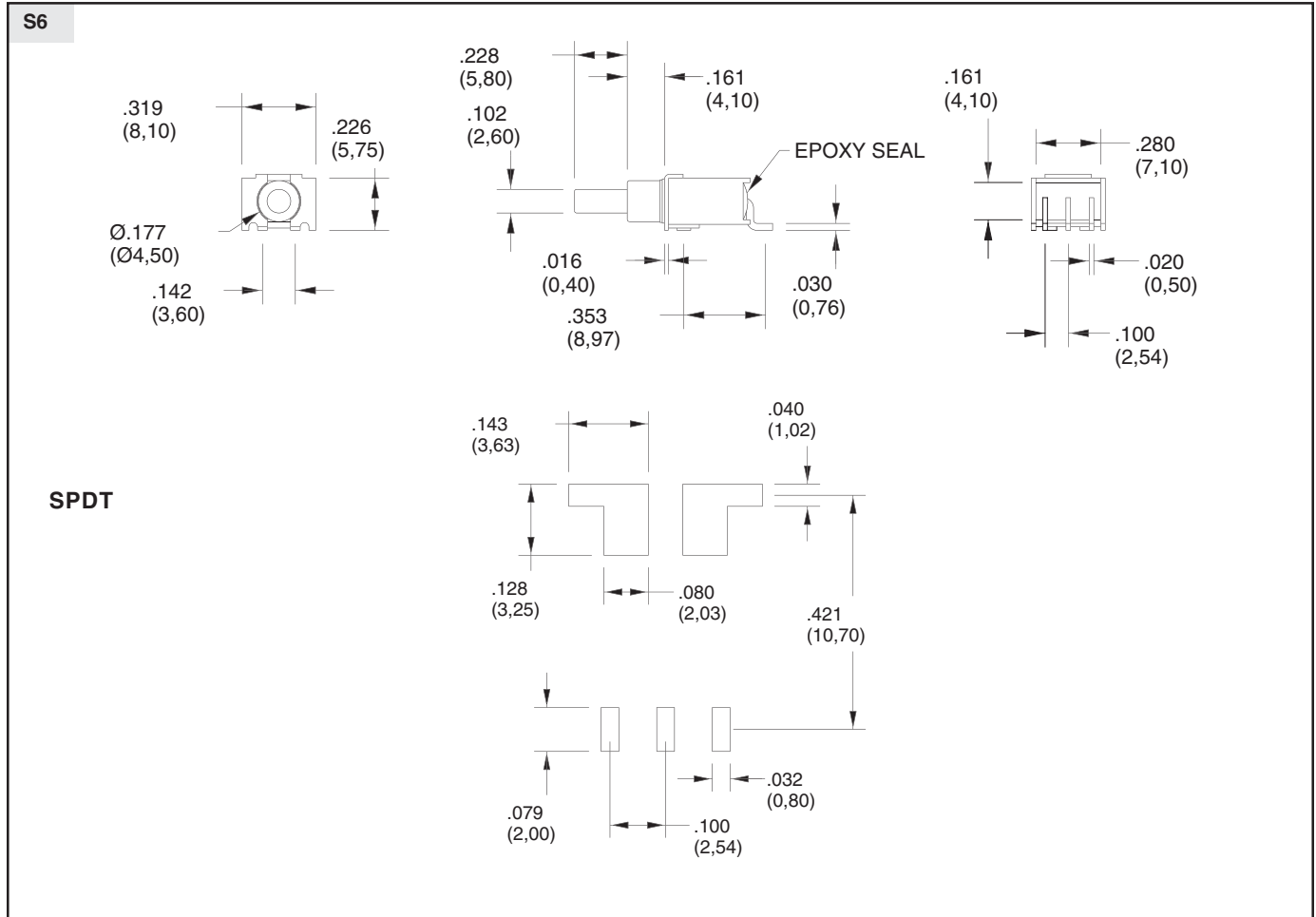
DIMENSIONS In inches (and millimeters)



Pushbutton Switches

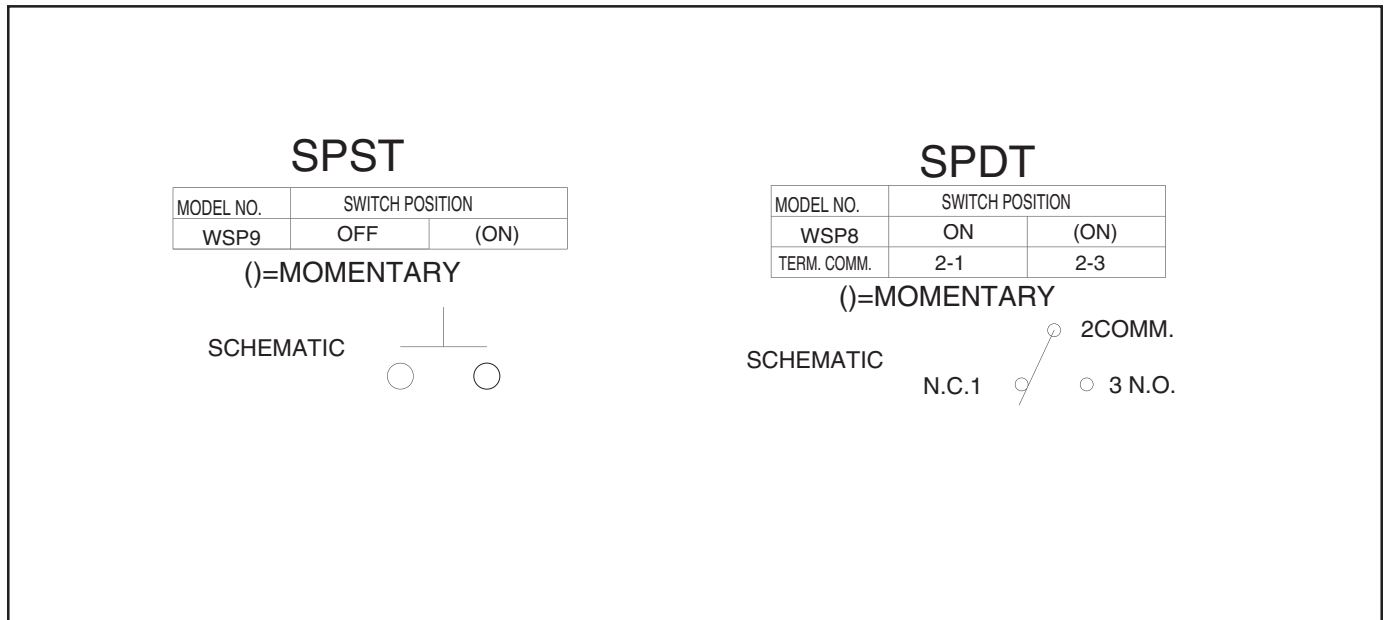
SERIES 38H

DIMENSIONS In inches (and millimeters)



Pushbutton Switches

Circuitry



SERIES 38H

SPECIFICATIONS

Rating Criteria

Operating Life: 50,000 make-and-break cycles at full load

Contact Rating (resistive load):

R Option: 0.4 VA maximum at 20 Vac or Vdc maximum

Q & G Options: 1A max at 125 Vac or 28 Vdc

Contact Resistance: Below 20 milliohms typical initial at 2-4 Vdc, 100 mA

Insulation Resistance: 1000 megaohms

minimum

Voltage Breakdown: 1500 Vrms minimum at sea level

Operating Temperature: -30°C. to +85°C.

Spring: Plated Music Wire

Contact System: Copper alloy

Switch Support: Brass, tin-plated

Materials and Finishes

Case: Glass Filled Nylon 4/6, UL94V-

Plunger: Thermoplastic Polyester(UL 94V-0) (with internal o-ring seal)

Terminals: Copper alloy

ORDERING INFORMATION

SERIES	MODEL NO.	TERMINATION	CONTACT	SEAL
38H	WSP8	M7	R	E
Sealed Surface Mount Subminiature Pushbutton Switches	Options: WSP8, WSP9 (see models for switching positions)	Options: M7, S6 (see termination options)	R = Copper alloy, gold plate over nickel plate. G=Copper alloy, Gold plate over silver plate Q= Copper alloy, Silver Plate	E = Epoxy seal

Pushbutton Switches