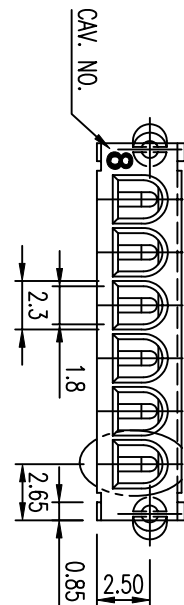


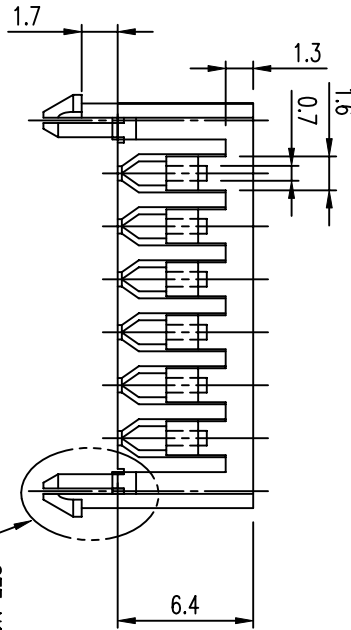
TABLE 1

PART NO.	NO. OF POS.	DIMENSIONS	
		A <sup>+0.2</sup> <sub>-0.0</sub>	B±0.1
WH2D-1/WH2D-1LF	2	7.5	2.5
WH3D-1/WH3D-1LF	3	10.0	5.0
WH4D-1/WH4D-1LF	4	12.5	7.5
WH5D-1/WH5D-1LF	5	15.0	10.0
WH6D-1/WH6D-1LF	6	17.5	12.5
WH7D-1/WH7D-1LF	7	20.0	15.0
WH8D-1/WH8D-1LF	8	22.5	17.5±0.15
WH9D-1/WH9D-1LF	9	25.0	20.0±0.15
WH10D-1/WH10D-1LF	10	27.5±0.3	22.5±0.15
WH11D-1/WH11D-1LF	11	30.0±0.3	25.0±0.15
WH12D-1/WH12D-1LF	12	32.5±0.3	27.5±0.15
WH13D-1/WH13D-1LF	13	35.0±0.3	27.5±0.15

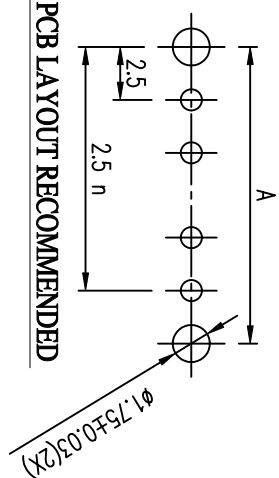
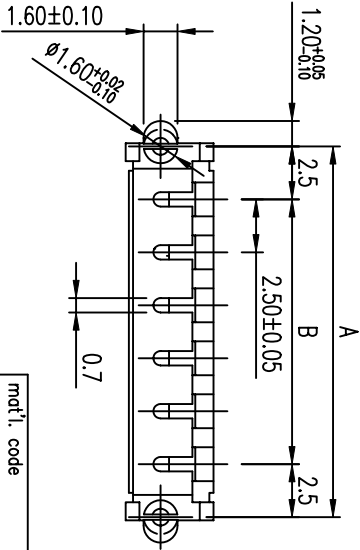
SUFFIX "LF" SEE NOTE 5



SEE NOTE 3



SEE NOTE 3



PCB LAYOUT RECOMMENDED

- NOTES:
1. MATERIAL : NYLON 66, UL94V-0 RATED.
  2. ORDERING INFORMATION: SEE TABLE 1
  3. FLASH : 0.2 MAX.
  4. APPEARANCE : 0.3 MAX.
  5. THE PRODUCT IS NOT INTENDED TO BE EXPOSED TO A MANUFACTURING SOLDER PROCESS ( WAVE SOLDER & SMT)

mat'l. code		dr		dtte		tolerances unless otherwise specified		CUSTOMER COPY		title	
ltr	ecn no	dr	dtte	linear	angles	projection	scale	product family	product no	code	sheet
A	T04-0027	M	01/19/04	.XX ±.20	0° ±2°	MM	3:1	FCI	WIRE HOLDER		1 of 1
B	T05-0219	L	09/23/05	.XXX ±.10				www.fciconnect.com	2.5MM PITCH		
sheet index		revision	sheet	engr		chr		dppd		sheet	
1		B	1	LEF SHEN		PAUL WANG		JOSEPH HSEH		1 of 1	
				01/19/04		01/19/04		01/19/04			
				MAGGE WU							
				01/19/04							
				DIPMATE							
				JPD22942							
				22526							

ACAD

code 22526