

Color-Keyed[®] Connectors for Copper Conductors



Bell Shaped Barrel

Cat. No.	Wire Size*			Class						Bolt Size (in.)	Dimensions (in.)					Die Colour	Die Code
	Code	Navy	Flex	Class G	Class H	Class I	Class K	Class M	Flex-/24		A	B	C	D	F		
541048BS	8	23	37/24	8	8	—	8	8	—	#10	1 1/16	1 5/32	1 3/32	5/64	7/32	Red	21
541056BS	6	30	61/24	5	5	5	5	5	—	1/4	1 3/16	9/16	7/16	7/64	1/4	Blue	24
541065BS	4	40-50	91/24	5	5	5	5	5	—	1/4	1 9/32	9/16	9/16	7/64	1/4	Grey	29
541394BS	3 & 4	40-50	91/24	4	4	4	4	4	—	5/16	1 7/16	2 5/32	1 9/32	5/64	1 1/32	Grey	29
541423BS	2	60	125/24	3	3	3	3	3	—	5/16	1 1 7/32	2 3/32	2 1/32	5/64	1 1/32	Brown	33
541472BS	1	75	150, 175/24	2	2	2	2	2	—	5/16	1 2 1/32	2 3/32	4 3/64	1/8	3/8	Green	37
541531BS	1/0	100	225/24	1	1	1	1	1	—	5/16	1 5/8	2 3/32	3/4	9/64	3/8	Pink	42
5411010BS	2/0	125	275/24	1/0	1/0	1/0	1/0	1/0	—	3/8	1 7/8	1 3/16	1 3/16	9/64	3/8	Black	45
5416520BS	3/0	150	325/24	2/0	2/0	2/0	2/0	2/0	—	1/2	2 7/32	1 1/16	1 5/16	9/64	1/2	Orange	50
5417030BS	4/0	200	450/24	3/0	3/0	3/0	3/0	3/0	—	1/2	2 5/16	1 1/16	1 1 3/32	5/32	1/2	Purple	54
5816540BS	250	—	550/24	4/0	4/0	—	—	—	—	1/2	2 1 9/32	1 1/8	1 1/4	3/16	1/2	Yellow	62
54114262BS	300	300	650/24	250	250	250	250	—	—	1/2	2 1 9/32	1 1/8	1 1/4	3/16	1/2	White	66
5411440BS	300	300	—	250	250	4/0	4/0	4/0	—	1/2	2 9/16	1 1/8	1 1/4	3/16	1/2	—	—
54115260BS	350	350	—	—	—	250	250	250	650/24	1/2	2 5/8	1 3/16	1 3/8	1 3/64	9/16	White	66
54185313BS	400	400	—	300	300	300	300	300	775/24	5/8	3 7/16	1 1 1/16	1 1 3/32	7/32	1 9/16	Blue	76
58177350BS	500	—	925/24	400	400	400	350	350	—	5/8	3	1 5/16	1 5/8	1/4	1 9/16	—	80
58180444BS	600	—	1100/24	—	—	450	450	450	—	5/8	3 3/8	1 1 1/16	1 2 5/32	1 7/64	1 9/16	Green	94
54122535BS	700	—	—	500	500	500	500	500	1325/24	5/8	3 3/8	1 1 1/16	1 2 9/32	9/32	1 9/16	Pink	99
54123560BS	750	—	—	600	—	—	—	550	—	5/8	3 5/8	1 1 1/16	1 1 5/16	5/16	1 9/16	Black	106
54124620BS	800	800	—	—	—	—	600	—	5/8	3 7/8	1 1 9/16	1 3 1/32	5/16	7/8	Orange	107	
54126777BS	900	—	1925/24	—	—	—	—	—	—	5/8	4 1/8	1 1 3/16	2 3/16	1 1/32	7/8	Yellow	115

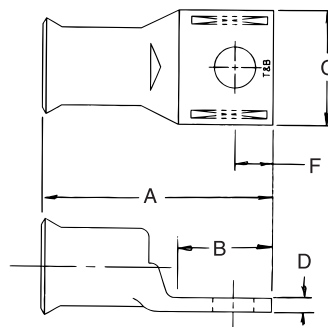
*Not CSA approved.

*Call your Regional Sales Office for sizes not listed.

Existing Cat. Nos.	Existing Connectors Are UL486A Listed For:			New Series** (Same Tubing As Existing Cat. Nos.)	Class G	Class H	Class I	Class K	Class M	Flex-/24	Code
	Code	Navy	Flex								
54104	8	23	37/24	541048BS	8	8	—	8	8	—	—
54105	6	30	61/24	541056BS	5	5	5	5	5	—	—
54106	4	40-50	91/24	541065BS	5	5	5	5	5	—	—
54139	4	40-50	91/24	541394BS	4	4	4	4	4	—	3
54142	2	60	125/24	541423BS	3	3	3	3	3	—	—
54147	1	75	150, 175/24	541472BS	2	2	2	2	2	—	—
54153-TB	1/0	100	225/24	541531BS	1	1	1	1	1	—	—
54110	2/0	125	275/24	5411010BS	1/0	1/0	1/0	1/0	1/0	—	—
54165	3/0	150	325/24	5416520BS	2/0	2/0	2/0	2/0	2/0	—	—
54170	4/0	200	450/24	5417030BS	3/0	3/0	3/0	3/0	3/0	—	—
58165	—	—	550/24	5816540BS	4/0	4/0	—	—	—	—	250
54114	300	300	—	5411440BS	250	250	4/0	4/0	4/0	—	—
54115	350	350	—	54115260BS	—	—	250	250	250	650/24	—
54185	400	400	—	54185313BS	300	300	300	300	300	775/24	—
58177	—	—	925/24	58177350BS	400	400	400	350	350	—	500
58180*	—	—	1100/24	58180444BS	—	—	450	450	450	—	600
54122	700	—	—	54122535BS	500	500	500	500	500	1325/24	—
54123	750	—	—	54123560BS	600	—	—	—	550	—	—
54124	800	800	—	54124620BS	—	—	—	—	600	—	—
54126	900	—	1925/24	54126777BS	—	—	—	—	—	—	—

*Cat. No. 58180 is made of the same tubing as Cat. No. 54120. Cat. No. 54120 is listed for 600 kcmil.

**To be installed with the same installing tools as the existing line of connectors.



COMPRESSION CONNECTORS

Color-Keyed®

Connectors for Copper Conductors

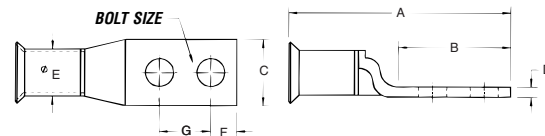


Bell Shaped Copper Lugs with Two Bolt Holes

Cat. No.	Wire Size*			Class G	Class H	Class I	Class K	Class M	Bolt Size (in.)	Dimensions (in.)							Die Colour	Die Code
	Code	Navy	Flex							A	B	C	D	E	F	G		
54850BE8BS	8	23	8	8	8	—	8	—	¼	2.19	1.88	.42	.07	.26	.25	.63	Red	21
54851BE8BS	8	23	8	8	8	—	8	—	¼	2.31	1.29	.47	.06	.26	.25	.75	Red	21
256-1157-8BS	8	23	8	8	8	—	8	—	¾	3.00	2.10	.56	.06	.26	.38	1.00	Red	21
256-1158-6BS	6	30	6	5	5	5	5	—	29/32	2.93	1.93	.59	.06	.30	.38	1.00	Blue	24
54852BE6BS	6	30	6	5	5	5	5	—	¼	2.28	1.28	.44	.08	.30	.25	.63	Blue	24
256-1225-6BS	6	30	6	5	5	5	5	—	¼	2.43	1.43	.43	.07	.30	.25	.75	Blue	24
54854BE5BS	4-3	40-50	5	5	5	5	5	—	¼	2.31	1.19	.52	.10	.37	.25	.63	Grey	29
256-1246-5BS	4-3	40-50	5	5	5	5	5	—	¼	2.31	1.31	.56	.09	.37	.25	.75	Grey	29
256-1159-5BS	4-3	40-50	5	5	5	5	5	—	¾	3.13	1.98	.59	.09	.37	.38	1.00	Grey	29
256-1300-3BS	2	60	3	3	3	3	3	3	¼	2.63	1.35	.68	.11	.41	.25	.75	Brown	33
54855BE3BS	2	60	3	3	3	3	3	3	¼	2.43	1.28	.59	.11	.41	.25	.63	Brown	33
54856BE3BS	2	60	3	3	3	3	3	3	5/16	2.78	1.63	.59	.11	.41	.38	.75	Brown	33
256-1160-3BS	2	60	3	3	3	3	3	3	3/8	3.08	1.94	.59	.11	.41	.38	1.00	Brown	33
54811BE3BS	2	60	3	3	3	3	3	3	½	4.28	3.00	.88	.09	.41	.50	1.75	Brown	33
54809BE2BS	1	75	2	2	2	2	2	2	¼	2.88	1.19	.67	.11	.47	.25	.63	Green	37
54812BE2BS	1	75	2	2	2	2	2	2	¼	2.75	1.40	.67	.11	.47	.25	.75	Green	37
54958BE2BS†	1	75	2	2	2	2	2	2	5/16	2.97	1.63	.67	.11	.47	.38	.88	Green	37
54857BE2BS	1	75	2	2	2	2	2	2	½	4.43	3.00	.88	.10	.47	.50	1.75	Green	37
54859BE1BS	1/0	100	1	1	1	1	1	1	¼	2.63	1.19	.75	.13	.52	.25	.63	Pink	42
54813BE1BS	1/0	100	1	1	1	1	1	1	¼	2.71	1.38	.75	.13	.52	.25	.75	Pink	42
54860BE1BS	1/0	100	1	1	1	1	1	1	5/16	2.97	1.63	.75	.13	.52	.38	.88	Pink	42
256-1162-1BS	1/0	100	1	1	1	1	1	1	¾	3.23	1.93	.75	.13	.52	.38	1.00	Pink	42
5414BE10BS	2/0	125	1/0	1/0	1/0	1/0	1/0	1/0	¼	2.62	1.25	.83	.13	.57	.25	.63	Black	45
256-1299-10BS	2/0	125	1/0	1/0	1/0	1/0	1/0	1/0	¼	2.69	1.31	.81	.13	.57	.25	.75	Black	45
256-1116-10BS	2/0	125	1/0	1/0	1/0	1/0	1/0	1/0	¾	3.19	1.81	.83	.13	.57	.38	1.00	Black	45
54862BE10BS	2/0	125	1/0	1/0	1/0	1/0	1/0	1/0	½	4.20	2.81	.83	.13	.57	.50	1.75	Black	45
54815BE20BS	3/0	150	2/0	2/0	2/0	2/0	2/0	2/0	¼	2.89	1.45	.92	.13	.63	.25	.75	Orange	50
54816BE20BS	3/0	150	2/0	2/0	2/0	2/0	2/0	2/0	¾	3.25	1.63	.92	.13	.63	.38	1.00	Orange	50
54864BE20BS	3/0	150	2/0	2/0	2/0	2/0	2/0	2/0	½	4.45	3.00	.92	.13	.63	.50	1.75	Orange	50
54817BE30BS	4/0	200	3/0	3/0	3/0	3/0	3/0	3/0	¼	3.15	1.38	1.03	.14	.70	.50	.75	Purple	54
256-1117-30BS	4/0	200	3/0	3/0	3/0	3/0	3/0	3/0	¾	3.35	1.81	1.03	.14	.70	.25	1.00	Purple	54
54818BE30BS	4/0	200	3/0	3/0	3/0	3/0	3/0	3/0	¾	4.38	2.63	1.03	.14	.70	.38	1.75	Purple	54
54866BE30BS	4/0	200	3/0	3/0	3/0	3/0	3/0	3/0	½	4.70	3.00	1.03	.14	.70	.50	1.75	Purple	54
256-1245-40BS	250	—	4/0	4/0	4/0	4/0	4/0	4/0	¾	3.83	1.93	1.13	.14	.77	.50	1.00	Yellow	62
54868BE40BS	250	—	4/0	4/0	4/0	4/0	4/0	4/0	½	4.92	3.00	1.13	.14	.77	.50	1.75	Yellow	62
54819BE262BS	300	300	262 kcmil	250 kcmil	250	250	250	—	¾	5.04	2.80	1.25	.15	.85	.50	1.00	White	66
54870BE262BS	300	300	262 kcmil	250 kcmil	250	250	250	—	½	5.23	3.00	1.25	.15	.85	.50	1.75	White	66
54822BE313BS	400	400	313 kcmil	300 kcmil	300	300	300	—	¼	4.38	1.93	1.41	.17	.96	.63	.75	Blue	76
54821BE313BS	400	400	313 kcmil	300 kcmil	300	300	300	—	¾	4.43	1.93	1.41	.17	.96	.63	1.00	Blue	76
54874BE313BS	400	400	313 kcmil	300 kcmil	300	300	300	—	½	5.51	3.00	1.41	.17	.96	.63	1.75	Blue	76
54823BE373BS	500	—	373 kcmil	400 kcmil	400	400	350	—	¼	4.93	1.94	1.61	.22	1.10	.50	.75	Brown	87
256-1119-373BS	500	—	373 kcmil	400 kcmil	400	400	350	—	¾	5.00	1.93	1.61	.22	1.10	.50	1.00	Brown	87
54876BE373BS	500	—	444 kcmil	—	—	450	450	—	½	6.00	3.00	1.61	.22	1.10	.50	1.75	Brown	87
54824BE444BS	—	—	444 kcmil	—	—	450	450	—	¾	5.70	2.80	1.75	.24	1.20	.63	1.00	Green	94
54878BE444BS	—	—	444 kcmil	—	—	450	450	—	½	5.83	3.00	1.75	.24	1.20	.63	1.75	Green	94
54880BE535BS	700	—	535 kcmil	500 kcmil	500	500	500	—	½	6.20	3.00	1.94	.27	1.33	.63	1.75	Black	106
58826BE777BS	900	—	777 kcmil	—	—	—	—	—	¾	6.49	2.80	2.27	.30	1.50	.63	1.00	Yellow	115

*Call your Regional Sales Office for sizes not listed.

† Not CSA approved.



Color-Keyed[®] Connectors for Copper Conductors



Narrow Tongue Lugs—Standard Barrel for 600V to 35 kV Applications

Material: High Conductivity Wrought Copper
Finish: Electro Tin Plate

Wire Size*		Cat. No.	Fig No.	Bolt Size	Dimensions (in.)							Die Code	Colour Key
Code	Flex				A	B	C	D	E	F	G		
#4	#4 91/24	55112	1	¼	9/16	½	1 3/8	¼	3/32			29	Grey
#2	125/24	55116	1	¼	9/16	½	1 13/32	¼	5/16			33	Brown
#1	#2 150/24 175/24	55122	1	¼	15/16	35/64	1 7/8	¼	1/8			37	Green
1/0	225/24	55130	1	¼	15/16	41/64	1 7/8	¼	1/8			42	Pink
2/0	1/0 275/24	55136	1	¼	1 9/64	41/64	2 19/64	¼	1/8			45	Black
3/0	2/0 325/24	55142	1	¼	1 9/64	25/32	2 23/64	¼	1/8			50	Orange
4/0	450/24	55148	1	¼	1 9/64	25/32	2 29/64	¼	9/64			54	Purple
250 kcmil	4/0 550/24	55156	1	¼	1 13/64	63/64	2 43/64	5/16	5/32			62	Yellow
300 kcmil		55162	1	¼	1 13/64	63/64	2 23/32	5/16	11/64			66	White
350 kcmil	262 650/24	55165	1	½	1 29/64	1 3/32	2 57/64	9/16	7/32			71	Red
500 kcmil	350/373 925/24	55171	1	½	1 29/64	1 13/64	3 13/64	35/64	7/32			87	Brown
750 kcmil	500/535 1325/24	54879NT [†] 55178	2 1	3/8 5/8	5 1 45/64	2 1/8 1 31/64	1 21/32 3 61/64	9/32 13/16	1 5/16 1 1/64	1/2	1	106 106	Black Black
900 kcmil	750/777 1925/24	58825NT [†] 58825NT0828 [†]	2 2	3/8 ½	5 6	2 1/8 3	1 21/32 1 3/8	9/16 9/16	1 15/32 1 15/32	1/2	1	115 115	Yellow Yellow

Can be used for 600V to 35kV applications provided proper insulation techniques are used.

U.L. and C.S.A. listing of T&B connectors is a continual process; please call your Regional Sales Office for the latest listings.

Many tongue sizes are available undrilled; please call your Regional Sales Office for availability.

[†] Not CSA approved.

*Call your Regional Sales Office for sizes not listed.

For tool and die selection see page 40.

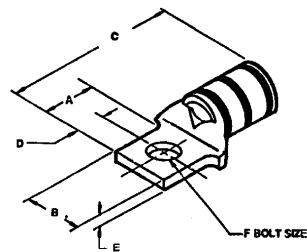


Fig. 1

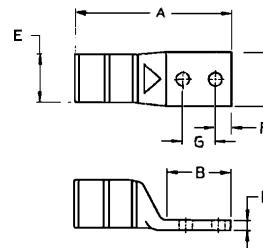


Fig. 2

COMPRESSION CONNECTORS