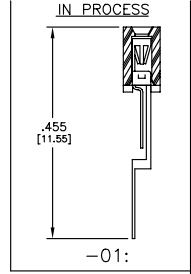
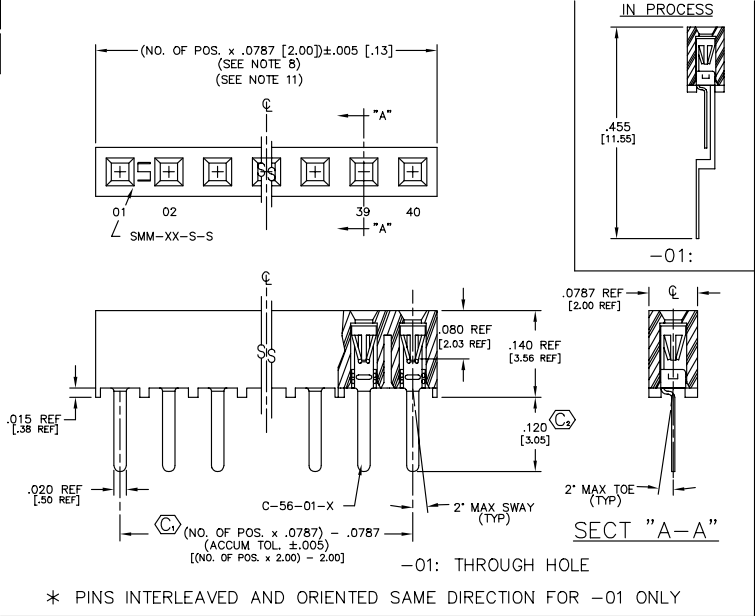


REVISION AL

DO NOT SCALE FROM THIS PRINT



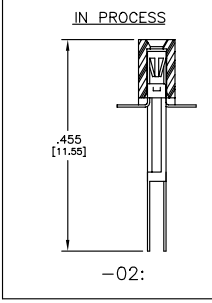
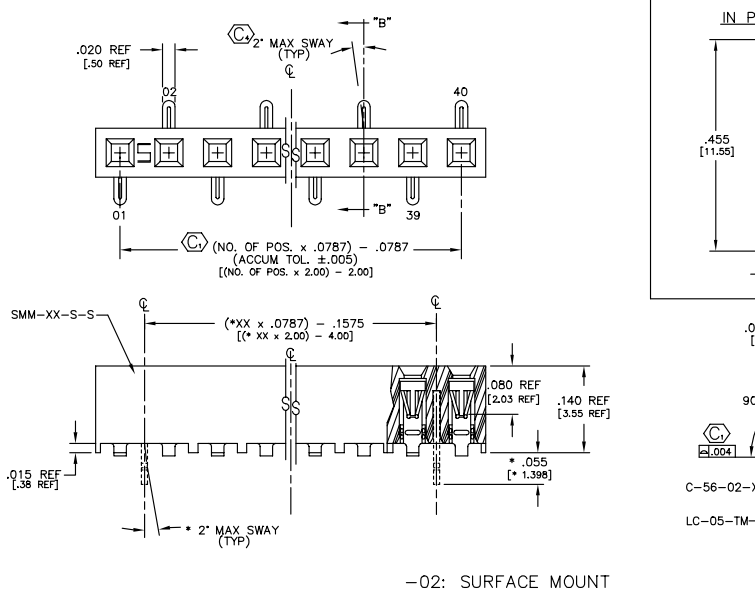
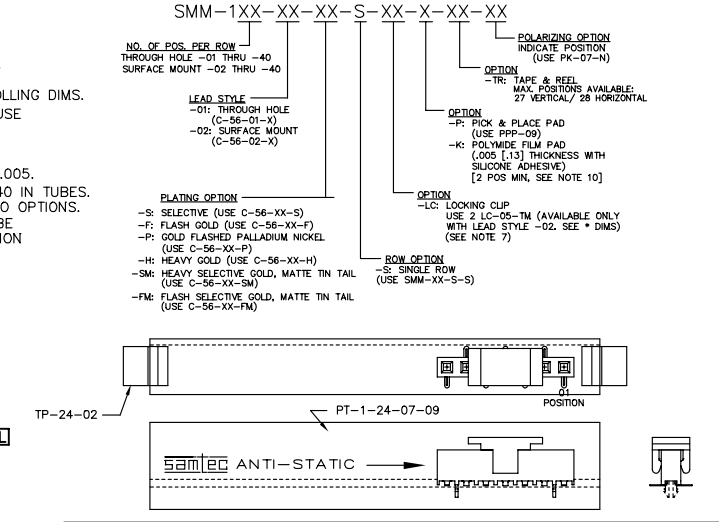
- NOTES:
1. RETENTION FORCE IN BODY TO BE: 1 lbs. MIN
  2. INSERTION FORCE TO BE: 3.0 oz. MAX.
  3. WITHDRAWAL FORCE TO BE: 0.4 oz. MIN.
  4. Ⓞ REPRESENTS CRITICAL DIMS. FOR STATISTICAL PROCESS CONTROL.
  5. [ ] DIMS ARE IN METRIC AND ARE NOT CONTROLLING DIMS.
  - 6.) SMM-105-01-X THRU SMM-140-01-X MUST USE PT-1-24-01-12.
  - 7.) -LC" OPTION FOR A 02 POSITION WILL HAVE ONLY ONE LOCKING CLIP (LC-05-T).
  - 8.) "END WALLS" AFTER CUTTING SHOULD BE .017±.005.
  - 9.) ALL OPTIONS: PACKAGE POSITIONS -04 THRU -40 IN TUBES. LAYER PACKAGE POSITIONS -02 & -03 WITH NO OPTIONS.
  - 10.) -02 THRU -05 POSITION WITH -K OR -P TO BE PACKAGED IN -TR ONLY. -06 THRU -40 POSITION AVAILABLE IN TUBE OR -TR PACKAGING.
  - 11.) MAX CUT FLASH: .010[.25]

| LEAD STYLE              | TUBE          | TUBE     |
|-------------------------|---------------|----------|
| -01                     | PT-1-24-01-12 | TP-12    |
| -01-P                   | PT-1-24-02-29 | TP-24    |
| -02                     | PT-1-24-01-16 | TP-12    |
| -02-K, -02-LC, -02-LC-K | PT-1-24-02-29 | TP-24    |
| -02-P                   | PT-1-24-07-09 | TP-24-02 |

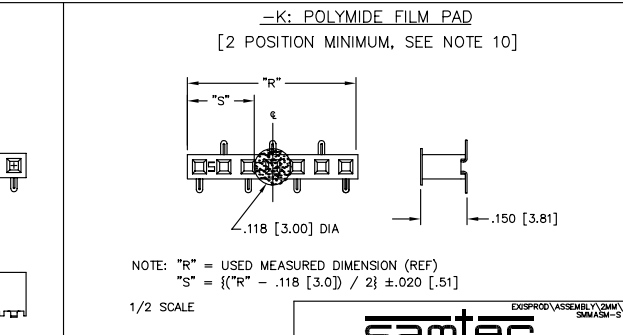
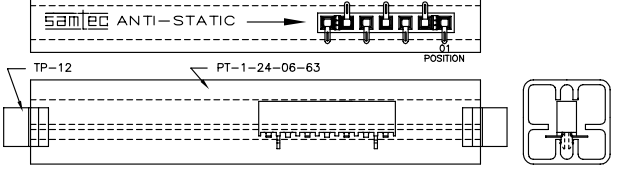
DIMENSIONS ARE IN INCHES UNLESS OTHERWISE NOTED TOLERANCES ARE: ANGLES ± 1°

ONE PLACE DECIMALS: ± .1 THREE PLACE DECIMALS: ± .005  
TWO PLACE DECIMALS: ± .01 FOUR PLACE DECIMALS: ± .0020

TITLE: 2 mm SOCKET STRIP (SINGLE ROW)  
DWG NO: SMM-1XX-XX-XX-S-XX-X-XX-XX  
SHEET 1 OF 1



PACKAGE PARTS IN TUBE AS SHOWN (POSITION PARTS WITH POS. -01 TOWARD ARROW AS SHOWN)



PROPRIETARY NOTE  
THIS DOCUMENT CONTAINS PROPRIETARY INFORMATION AND IS NOT TO BE REPRODUCED OR TRANSMITTED IN ANY FORM OR BY ANY MEANS, ELECTRONIC OR MECHANICAL, INCLUDING PHOTOCOPYING, RECORDING, OR BY ANY INFORMATION STORAGE AND RETRIEVAL SYSTEM, WITHOUT THE WRITTEN CONSENT OF SAMTEC INC.

EXSPROD/ASSEMBLY/2MM/SMMASH-5

**samtec**

520 PARK EAST BLVD., NEW ALBANY, INDIANA 47150  
PHONE (812) 944-6733 P.O. BOX 1147  
CODE 55322

MADE BY: WATT, KOLB 5-22-91  
CHECKED BY: MCCARTIN

DIRECT APPROVAL: DEM

SMM-1XX-XX-XX-S-XX-X-XX-XX  
SHEET 1 OF 1