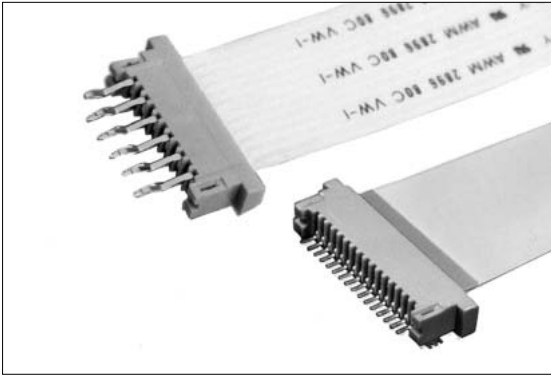


FC-10 Series 1.0mm Spacing (SMT & DIP Type)



Features

1. Utilization of an LIF structure allows for simple and easy insertion.
2. Choice of versions available, such as SMT and dip types, and lower or upper contact type.
3. A lead-free product.

Specifications

1. Rating : 0.5A, 50V AC/DC max.
2. Contact Resistance : 30mΩ, max.
3. Insulation Resistance : 1000MΩ, min. at 500V DC
4. Withstanding Voltage : 500V AC for one minute
5. Operating Temperature Range : -25°C to +70°C

Materials and Plating

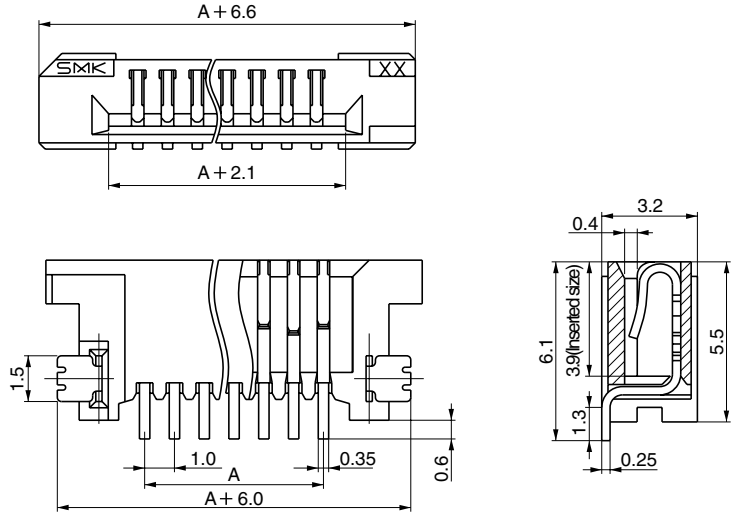
- Housing : Polyphenylene Sulfide (PPS), Natural Color, 94V-0
- Contact : Phosphor Bronze, Sn Plating

Note

Please contact our local sales agent for supply on embossed tape.

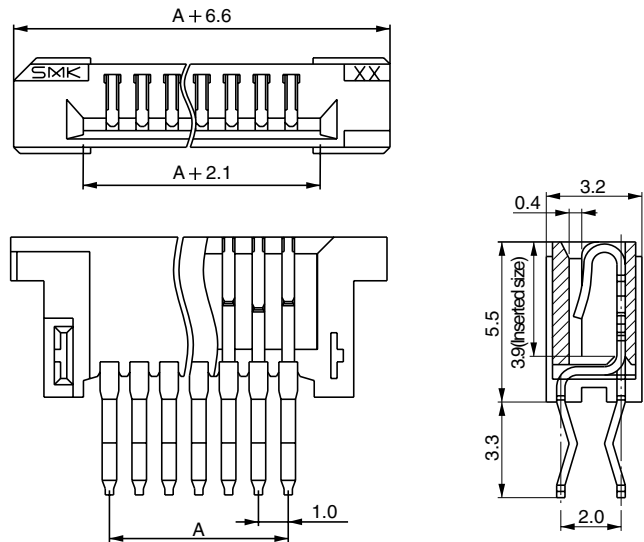
● SMT Type CFF23□□-01☒☒F

↑ No. of Pins



● DIP Type CFF61□□-0101F

↑ No. of Pins



| □□ | No. of Pins | A | □□ | No. of Pins | A |
|----|-------------|------|----|-------------|------|
| 05 | 5 | 4.0 | 18 | 18 | 17.0 |
| 06 | 6 | 5.0 | 19 | 19 | 18.0 |
| 07 | 7 | 6.0 | 20 | 20 | 19.0 |
| 08 | 8 | 7.0 | 21 | 21 | 20.0 |
| 09 | 9 | 8.0 | 22 | 22 | 21.0 |
| 10 | 10 | 9.0 | 23 | 23 | 22.0 |
| 11 | 11 | 10.0 | 24 | 24 | 23.0 |
| 12 | 12 | 11.0 | 25 | 25 | 24.0 |
| 13 | 13 | 12.0 | 26 | 26 | 25.0 |
| 14 | 14 | 13.0 | 27 | 27 | 26.0 |
| 15 | 15 | 14.0 | 28 | 28 | 27.0 |
| 16 | 16 | 15.0 | 29 | 29 | 28.0 |
| 17 | 17 | 16.0 | 30 | 30 | 29.0 |

| ☒☒ | Packing Style | pcs/reel |
|----|-----------------|----------|
| 01 | Embossed Taping | 1000 |
| 02 | Pack in Bulk | — |

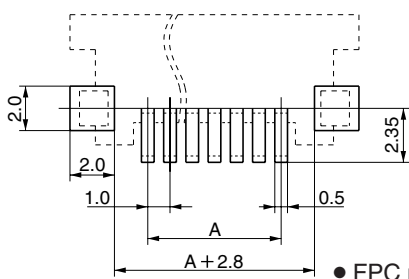
● List of the FC-10 Series

| Part No. | Contact Position | Structure | P.C. Board Dimension |
|--|------------------|--------------|----------------------|
| CFF23□□-01☒☒F SMT—Right Angle— | Upper | | |
| CFF43□□-01☒☒F SMT Reverse Right Angle— | Lower | | |
| CFF41□□-01☒☒F SMT—Straight— | — | Pin No.1 | Pin No.1 |
| CFF51□□-0101F DIP—Straight— | — | | Pin No.1 |
| CFF61□□-0101F DIP—Straight— Reverse Set | — | | Pin No.1 |
| CFF33□□-0101F DIP—Right Angle— | Upper | | Pin No.1 |
| CFF73□□-0101F DIP—Right Angle— Reverse Set | Upper | | Pin No.1 |
| CFF83□□-0101F DIP Reverse Right Angle— | Lower | | Pin No.1 |

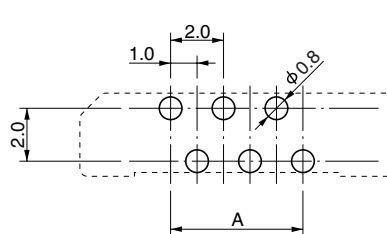
■ P.C. Board Dimension

■ Applicable FPC/FFC Dimension
($t=0.3\pm 0.05$)

● SMT Type



● DIP Type



● FPC plating to recommend : Sn plating

