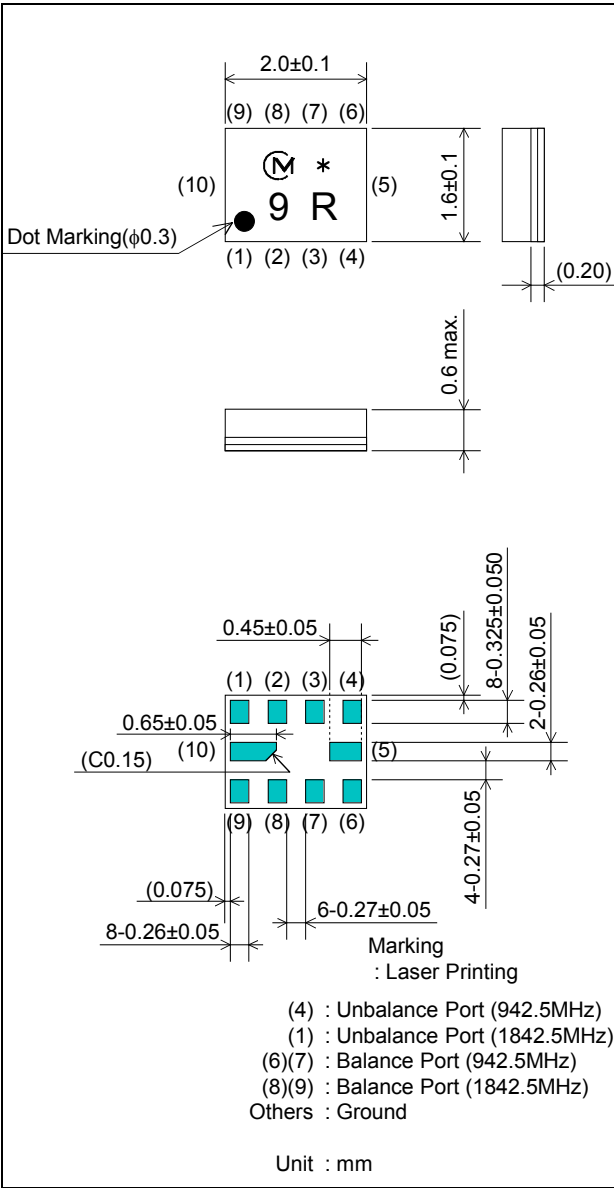


SAW FILTER FOR Telematics

Murata part number : SAWEP942MCN0F10 (fc=942.5MHz)

Package Dimensions



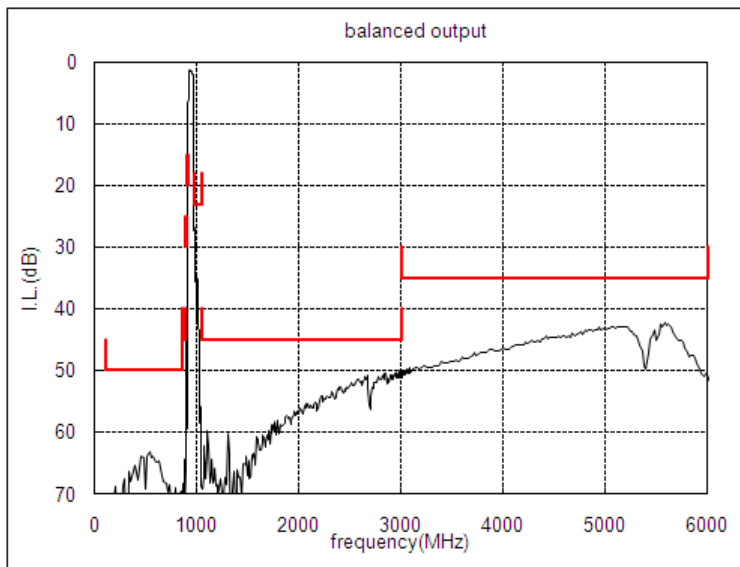
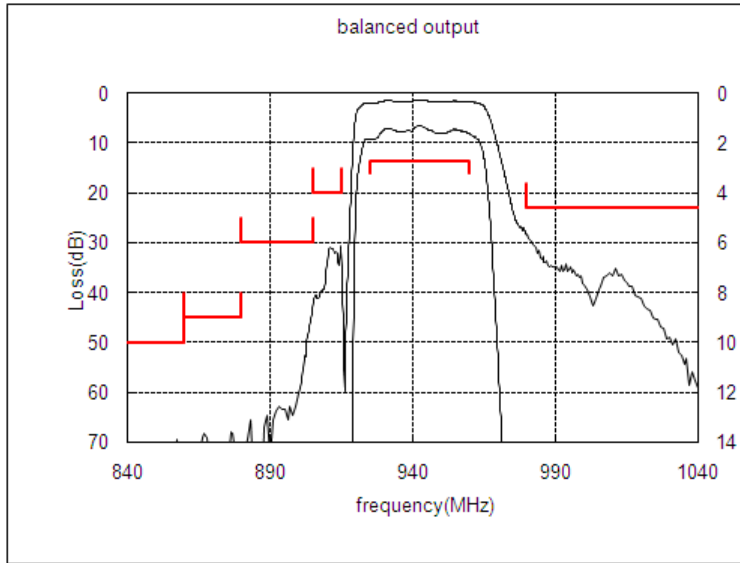
Specification

| Item | Specification | | |
|--|-----------------------------|-------------------|------------|
| | -40 to 85°C | 25±2°C | typ. |
| Nominal Center Frequency(fc) | 942.5 MHz | | |
| Insertion Loss (925 to 960MHz) | 2.7 dB max. | 2.1 dB max. | 1.9 dB |
| Absolute Attenuation | | | |
| 1) 100 to 860 MHz | 50 dB min. | 50 dB min. | 63 dB |
| 2) 860 to 880 MHz | 45 dB min. | 45 dB min. | 66 dB |
| 3) 880 to 905 MHz | 30 dB min. | 30 dB min. | 41 dB |
| 4) 905 to 915 MHz | 20 dB min. | 22 dB min. | 31 dB |
| 5) 980 to 1050 MHz | 23 dB min. | 23 dB min. | 29 dB |
| 6) 1050 to 3000 MHz | 45 dB min. | 45 dB min. | 51 dB |
| 7) 3000 to 6000 MHz | 35 dB min. | 35 dB min. | 43 dB |
| Ripple Deviation (925 to 960MHz) | 1.7 dB max. | 1.1 dB max. | 0.6 dB |
| VSWR (925 to 960MHz) | 2.1 max. | 2.0 max. | 1.7 |
| Amplitude Balance (925 to 960MHz) | ±1.0dB max. | ±0.6dB max. | ±0.2dB |
| Phase Balance (925 to 960MHz) | 180±10deg. max. | 180±5deg. max. | 180±1.2deg |
| Unbalance Port Matching Impedance (nominal) | 50Ω | | |
| Balance Port Matching Impedance (nominal) | 150Ω//82nH | | |
| Input Signal Level | 31.6mW (+15dBm), 2000 hours | | |

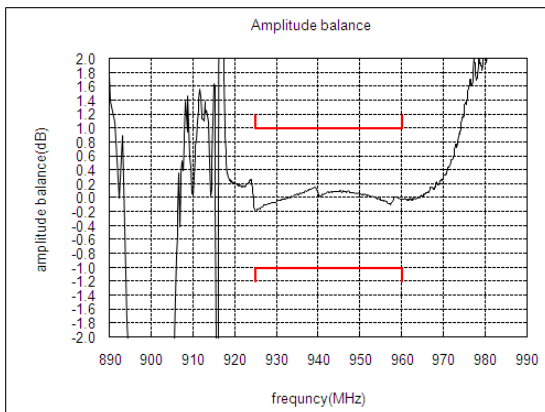
SAW FILTER FOR Telematics

Murata part number : SAWEP942MCN0F10 (fc=942.5MHz)

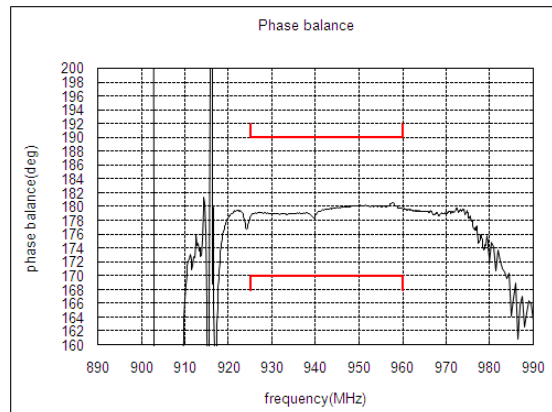
Frequency Performance



Amplitude balance



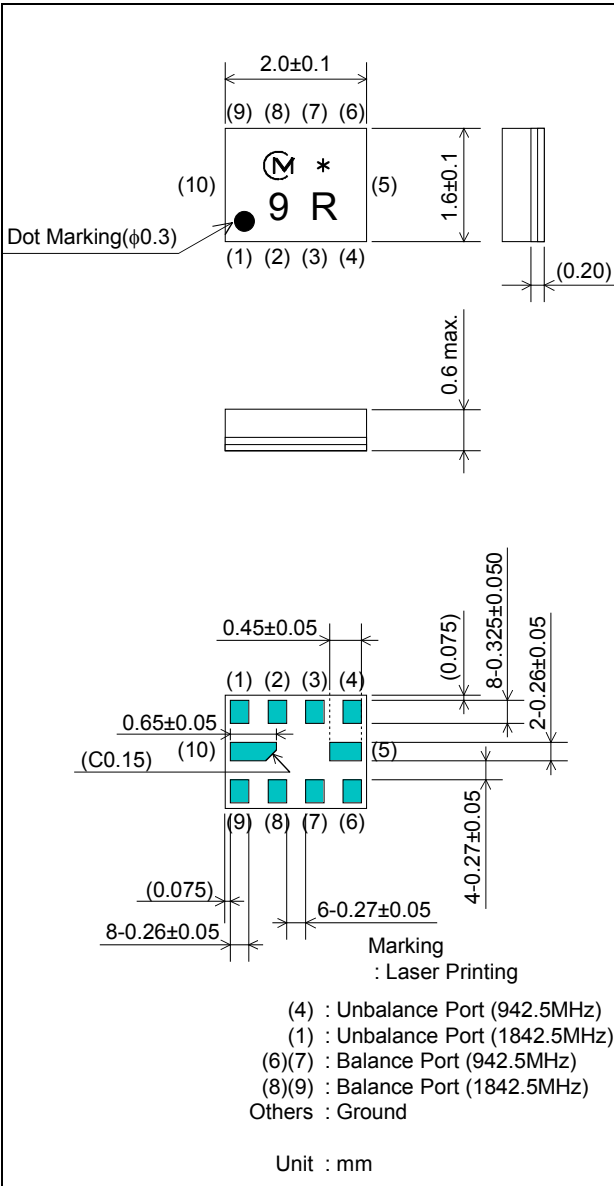
Phase balance



SAW FILTER FOR Telematics

Murata part number : SAWEP942MCN0F10 (fc=1842.5MHz)

Package Dimensions



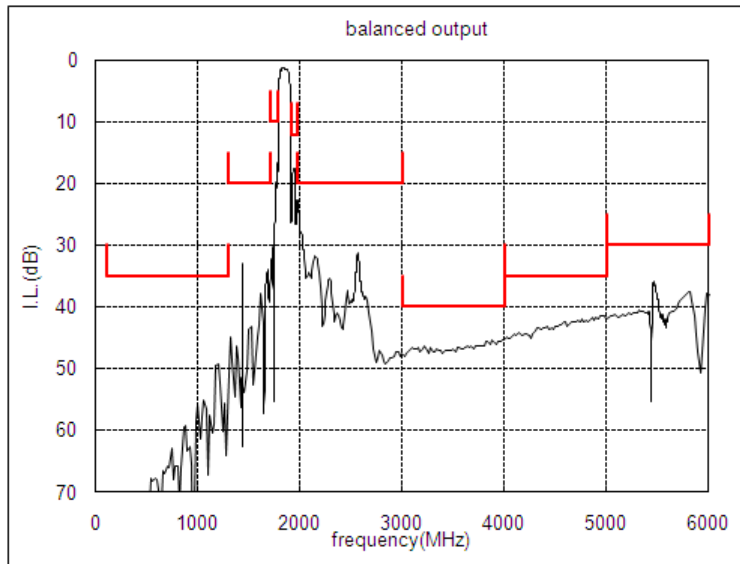
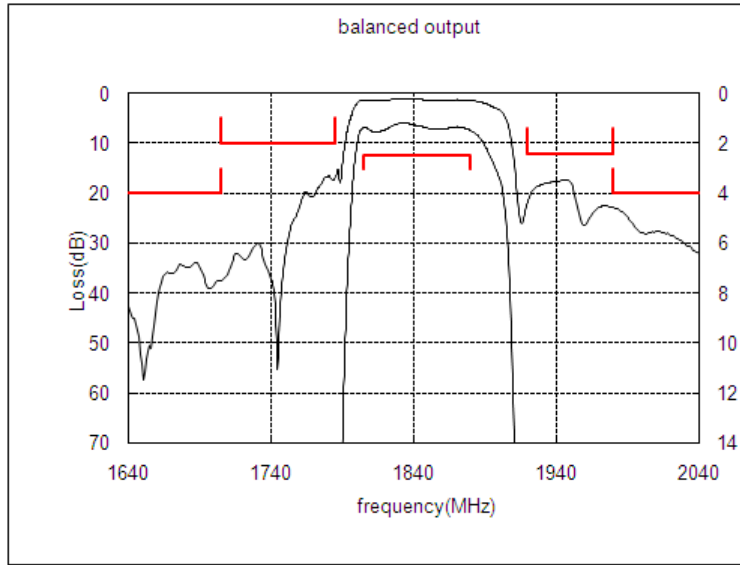
Specification

| Item | Specification | | |
|--|---------------------------|--------------------|-----------|
| | -40 to 85°C | 25±2°C | typ. |
| Nominal Center Frequency(fc) | 1842.5 MHz | | |
| Insertion Loss (1805 to 1880MHz) | 2.5 dB max. | 1.8 dB max. | 1.6 dB |
| Absolute Attenuation | | | |
| 1) 100 to 1300 MHz | 35 dB min. | 35 dB min. | 49 dB |
| 2) 1300 to 1705 MHz | 20 dB min. | 20 dB min. | 32 dB |
| 3) 1705 to 1785 MHz | 10 dB min. | 13 dB min. | 16 dB |
| 4) 1920 to 1980 MHz | 12 dB min. | 15 dB min. | 18 dB |
| 5) 1980 to 3000 MHz | 20 dB min. | 20 dB min. | 23 dB |
| 6) 3000 to 4000 MHz | 40 dB min. | 40 dB min. | 45 dB |
| 7) 4000 to 5000 MHz | 35 dB min. | 35 dB min. | 41 dB |
| 8) 5000 to 6000 MHz | 30 dB min. | 30 dB min. | 34 dB |
| Ripple Deviation (1805 to 1880MHz) | 1.5 dB max. | 0.8 dB max. | 0.4 dB |
| VSWR (1805 to 1880MHz) | 2.3 max. | 2.1 max. | 1.7 |
| Amplitude Balance (1805 to 1880MHz) | ±1.5dB max. | ±1.4dB max. | ±0.9dB |
| Phase Balance (1805 to 1880MHz) | 180±12deg. max. | 180±10deg. max. | 180±5deg. |
| Unbalance Port Matching Impedance (nominal) | 50Ω | | |
| Balance Port Matching Impedance (nominal) | 150Ω//15nH | | |
| Input Signal Level | 20mW (+13dBm), 2000 hours | | |

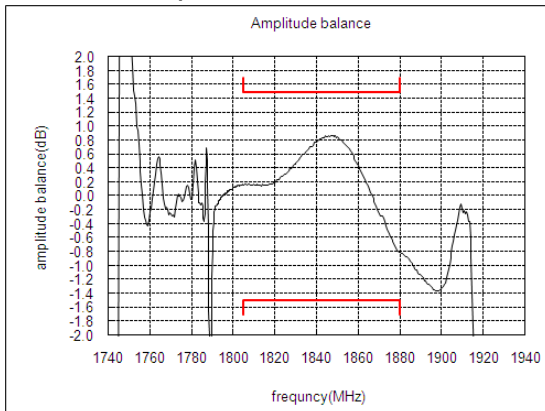
SAW FILTER FOR Telematics

Murata part number : SAWEP942MCN0F10 (fc=1842.5MHz)

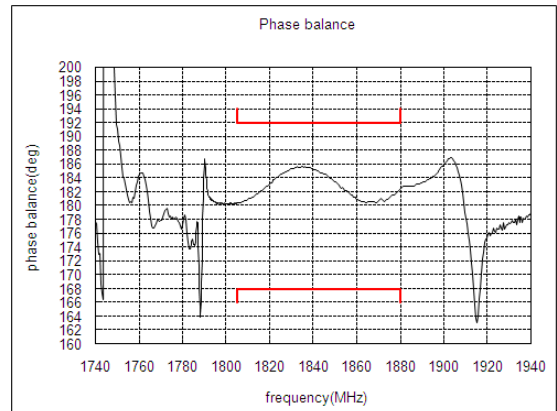
Frequency Performance



Amplitude balance



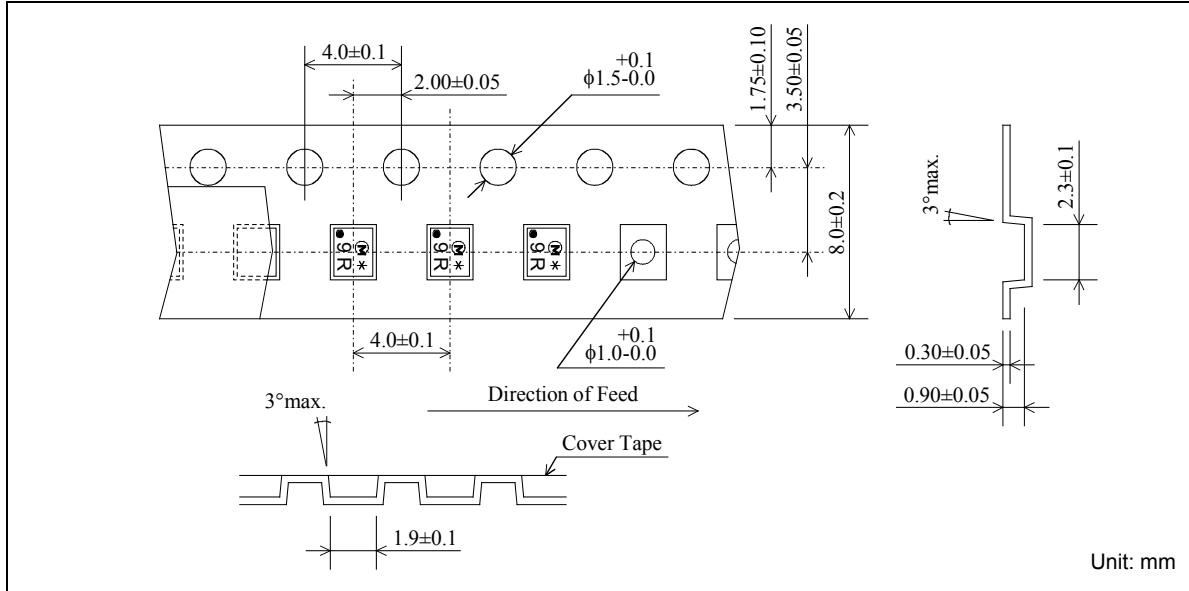
Phase balance



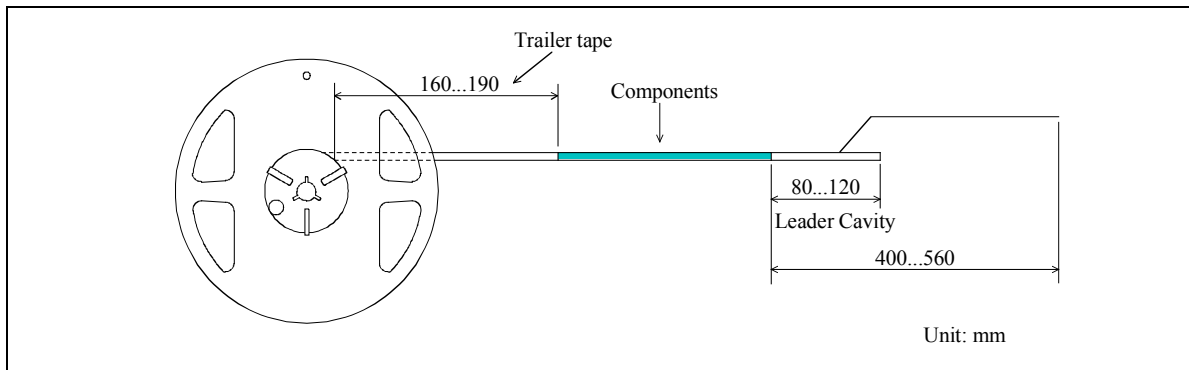
SAW FILTER FOR Telematics

Murata part number : SAWEP942MCN0F10

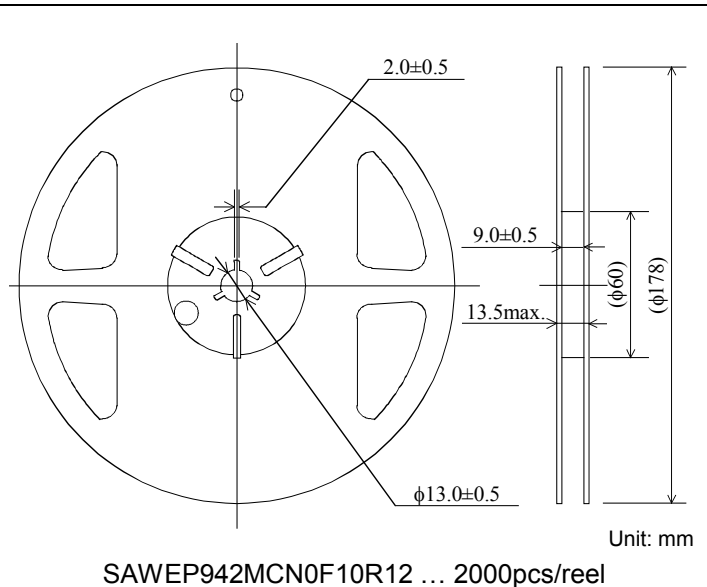
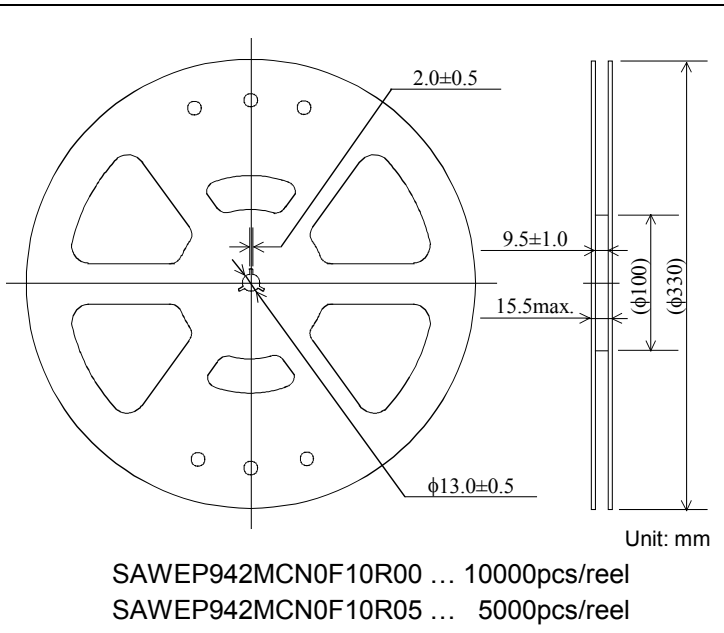
Dimensions of Carrier Tape



Dimensions of Tape



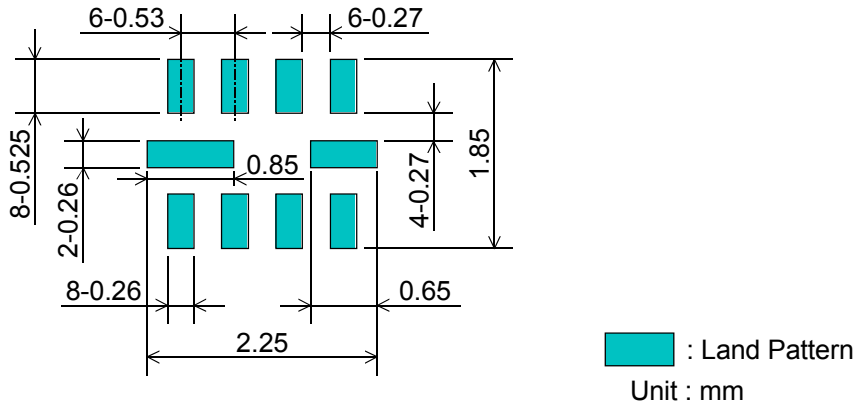
Dimensions of Reel



SAW FILTER FOR Telematics

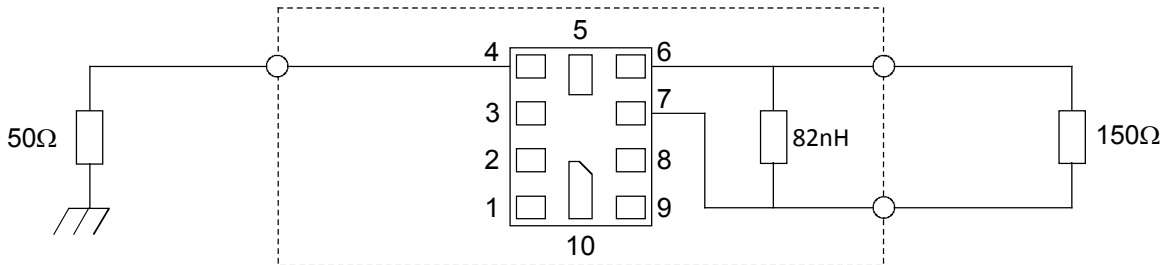
Murata part number : SAWEP942MCN0F10

Recommended Land Pattern

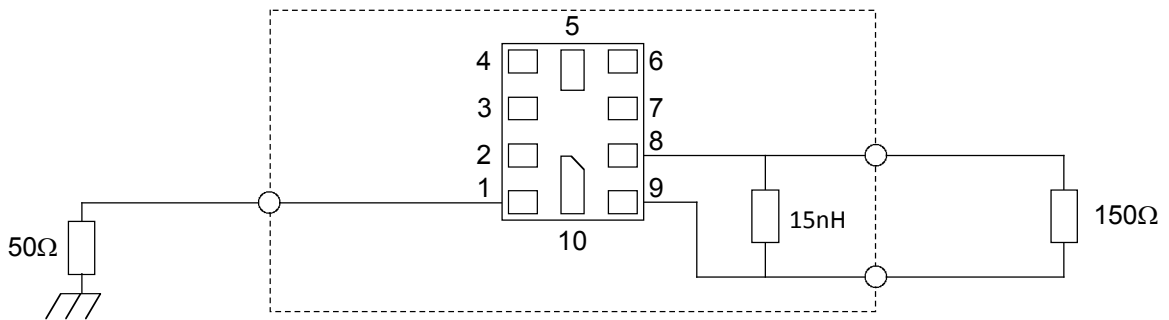


Test Circuit

942.5MHz



1842.5MHz



- This PDF Datasheet is downloaded from the website of Murata Manufacturing Co., Ltd. Therefore, it's specifications are subject to change or our products in it may be discontinued without advance notice. Please check with our sales representatives or product engineers before ordering.
- This PDF Datasheet has only typical specifications because there is no space for detailed specifications. Therefore, please approve our product specifications or transact the approval sheet for product specifications before ordering.