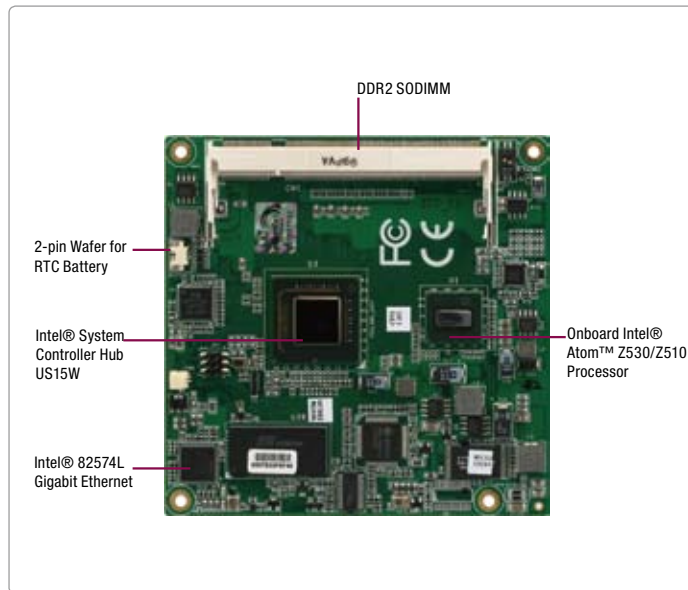


COM-U15

COM Express Type 2 CPU Module With Onboard Intel® Atom™ Z530/Z510 Processor

06

COM Express CPU Modules

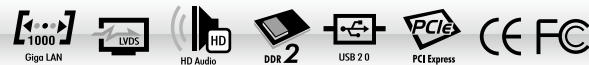


Features

- Onboard Intel® Atom™ Z530/Z510 Processor
- Intel® System Controller Hub US15W
- SODIMM DDR2 400/533 Memory, Max. 2 GB
- Gigabit Ethernet
- Up to 24-bit LVDS LCD, SDVO
- High Definition Audio Interface
- PATA SSD (Up To 4GB) x 1 Or SATA 3.0Gb/s x 1 Or PATA x 1
- USB2.0 x 8
- PCI-Express [x1] x 1
- Wide DC Input Range, +8.5V To +19V
- COM Express Pin-out Type 2
- Compact Module Size, 95mm x 95mm, COM.0 Rev. 1.0

Specifications

System	
Form Factor	COM Express compact module, Pin-out Type 2, COM.0 Rev. 1.0
Processor	Onboard Intel® Atom™ Z530/Z510 processor Z530: 1.6 GHz/FSB 533 MHz Z510: 1.1 GHz/FSB 400 MHz
System Memory	200-pin DDR2 SODIMM x 1, Max. 2 GB (DDR2 400/533)
Chipset	Intel® System Controller Hub US15W
I/O Chipset	Intel® System Controller Hub US15W
Ethernet	Intel® 82574L, 10/100/1000Base-TX
TPM	—
BIOS	Award BIOS v8.0 TSOP type, 1 MB ROM With legacy-free BIOS (Default)
EEPROM	Atmel® AT24C02, save BIOS and Configuration data (Optional)
Wake on LAN	—
Watchdog Timer	Fintek F75111
H/W Status Monitoring	Supports CPU temperature monitoring (Optional)
Expansion Interface	4-bit SDIO: Multiplexed with GPIO pins PCI-Express [x1] x 1 LPC bus x 1 SMBus x 1
Power Requirement	Wide DC input range, +8.5V to +19V Nominal: +12V 2-pin wafer for RTC battery
Power Consumption (Typical)	Intel® Atom™ Z530 1.6 GHz, DDR2 667 2 GB 0.5A@+12V 0.185A@+5V (w/ ECB-951D)
Board Size	3.74"(L) x 3.74"(W) (95mm x 95mm)
Gross Weight	0.55 lb (0.25 Kg)
Operating Temperature	32°F ~ 140°F (0°C ~ 60°C)
Storage Temperature	-40°F ~ 176°F (-40°C ~ 80°C)
Operating Humidity	0% ~ 90% relative humidity, non-condensing
MTBF (Hours)	100,000
Display	Supports LCD/DVI or LCD/LCD (via SDVO) simultaneous/ dual view displays
Chipset	Intel® System Controller Hub US15W integrated
Memory	Shared system memory up to 256 MB
Resolutions	Up to 1366 x 768@85 Hz (Max. pixel clock of 112 MHz) for LVDS Up to 1280 x 1024@85 Hz (Max. pixel clock of 160 MHz) for SDVO
LCD Interface	Up to 24-bit Single Channel LVDS
SDVO	Supports SDVO x 1
I/O	
Storage	PATA SSD onboard (Master device), Max. 4GB SATA 3.0Gb/s x 1 or PATA x 1 (One device)
USB	USB2.0 x 8
Audio	High definition audio
GPIO	Up to 4 in or 4 out (Default): Multiplexed with 4-bit SDIO



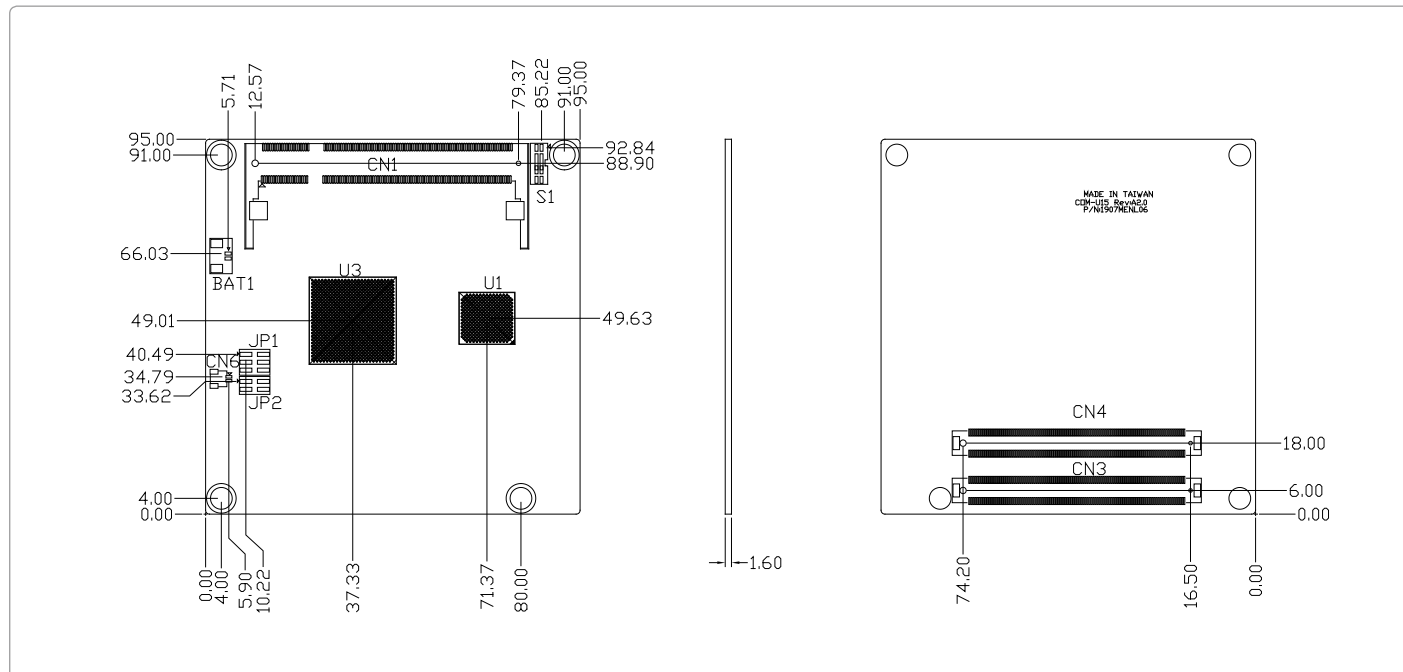
Packing List

- M2.5 Screw x 4
- Product CD
- COM-U15

COM-U15

Dimension

Unit: mm



Ordering Information

Part Number	COM Express Type	CPU	Memory	Display	LVDS	Storage	LAN	USB	UART	Expansion Slot	Power	Temp
TF-COM-U15-A20	2 (COM.0 Rev.1.0)	Intel® Atom™ Z510/1.1GHz	Onboard 1GB DDR2	LVDS, SDVO	24-bit Single Channel	SATA2 x 2 PATA x 1	GbE x 1	USB2.0 x 8	—	PCI-E [x1] x 1	8.5~19V	0°C ~ 60°C
TF-COM-U15-A20-01	2 (COM.0 Rev.1.0)	Intel® Atom™ Z530/1.6GHz	Onboard 1GB DDR2	LVDS, SDVO	24-bit Single Channel	SATA2 x 1 or PATA x 1	GbE x 1	USB2.0 x 8	—	PCI-E [x1] x 1	8.5~19V	0°C ~ 60°C
TF-COM-U15-A20-02	2 (COM.0 Rev.1.0)	Intel® Atom™ Z530/1.6GHz	Onboard 1GB DDR2	LVDS, SDVO	24-bit Single Channel	4GB SSD SATA2 x 1 or PATA x 1	GbE x 1	USB2.0 x 8	—	PCI-E [x1] x 1	8.5~19V	0°C ~ 60°C

Optional Accessories

- **TF-ECB-951D-A10**

COM Express Carrier Board, Gigabit Ethernet, 2CH Audio, 2 COM, USB2.0, CompactFlash™, SD, PCI-Express, DC, 2 COM Express Connectors, Rev. A1.0

- **TF-PER-A062**

Passive Heatsink, For COM-U15, Onboard CPU

- **TF-PER-A057**

Heat Spreader Kit, For COM-U15, Onboard CPU

- **14S62U150C**

8Mb PLCC BIOS Chip with Standard (Legacy) BIOS for COM-U15/ NanoCOM-U15 + ECB-951D