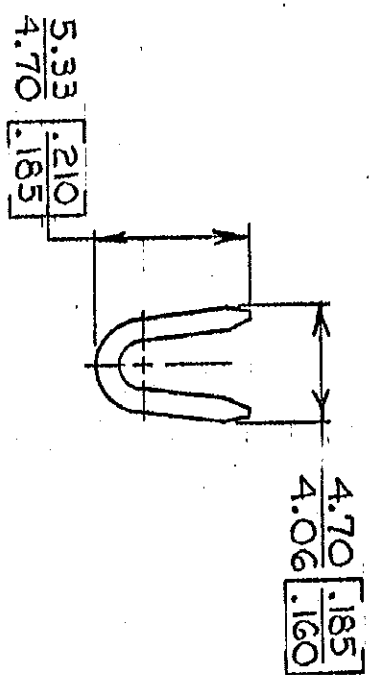
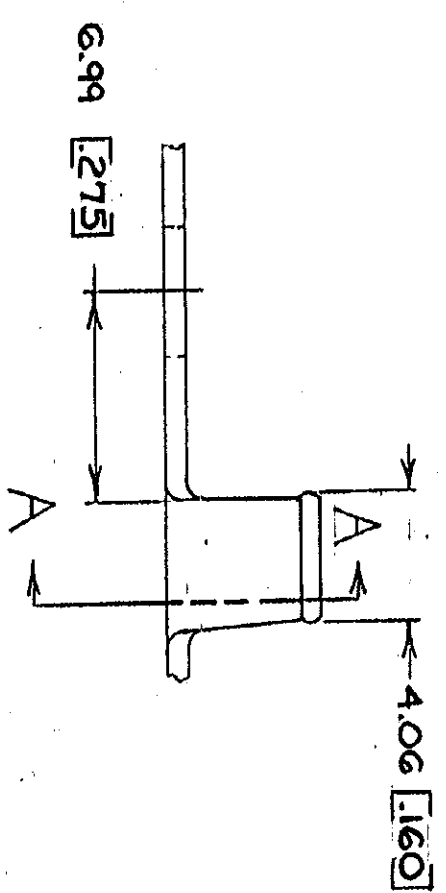
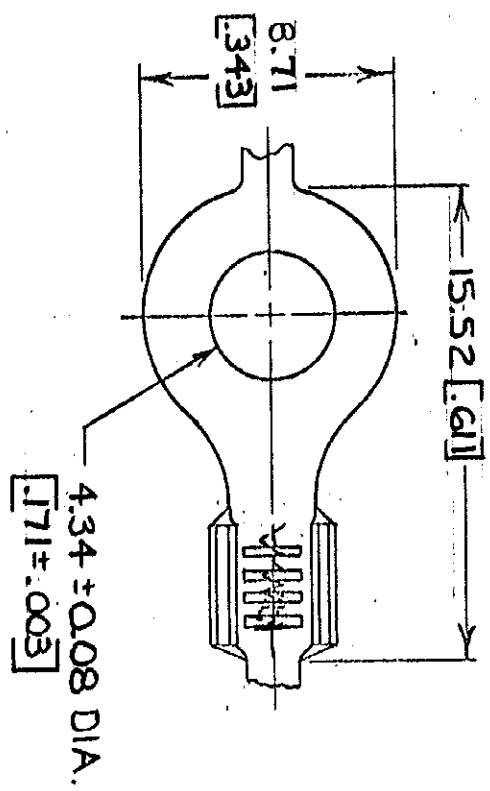


© COPYRIGHT 1965 BY AMP INCORPORATED, HARRISBURG, PA.
 ALL INTERNATIONAL RIGHTS RESERVED. AMP INCORPORATED PRODUCTS
 COVERED BY U. S. AND FOREIGN PATENTS AND/OR PATENTS PENDING.



SECT A-A

- 1. CONTINUOUS STRIP, ON REELS.
- 2. DIMENSIONS IN BRACKETS ARE IN INCHES.

METRIC

REVISIONS		DATE	APPROVED
1	REDRAWN & REVISED	9/26/78	[Signature]
2	REV PER AF-6785	9/29/78	[Signature]

UNLESS OTHERWISE SPECIFIED DIMENSIONS ARE IN MILLIMETERS		CONTRACT NO.		NAME	
TOLERANCES ON:		DR. [Signature]		AMP INCORPORATED	
DIMENSIONS		7-19-78		Harrisburg, Pa.	
DECIMALS		±0.005		RING	
ANGLES		±1.0°		DRAWING NO. 40517	
MATERIAL		M4 #8		SIZE B	
SEE TABLE		0.8-2.0mm ² [8-14]		CODE IDENT NO. 00779	
FINISH		TIN		DRAWING NO. 40517	
SEE TABLE		0.76 BRASS [030]		SHEET	
APPROVED [Signature]		APPROVED [Signature]		SCALE	
DATE 8-1-78		DATE 8-1-78			
DESIGN APPD [Signature]		OTHER APPD			