

W-METAL SHELL — PLUG — NON-ENVIRONMENTAL

TYPE WB6A TYPE WB9A

Mates with
Receptacle
Types WA, WC, WD

TYPE WC6A TYPE WC9A

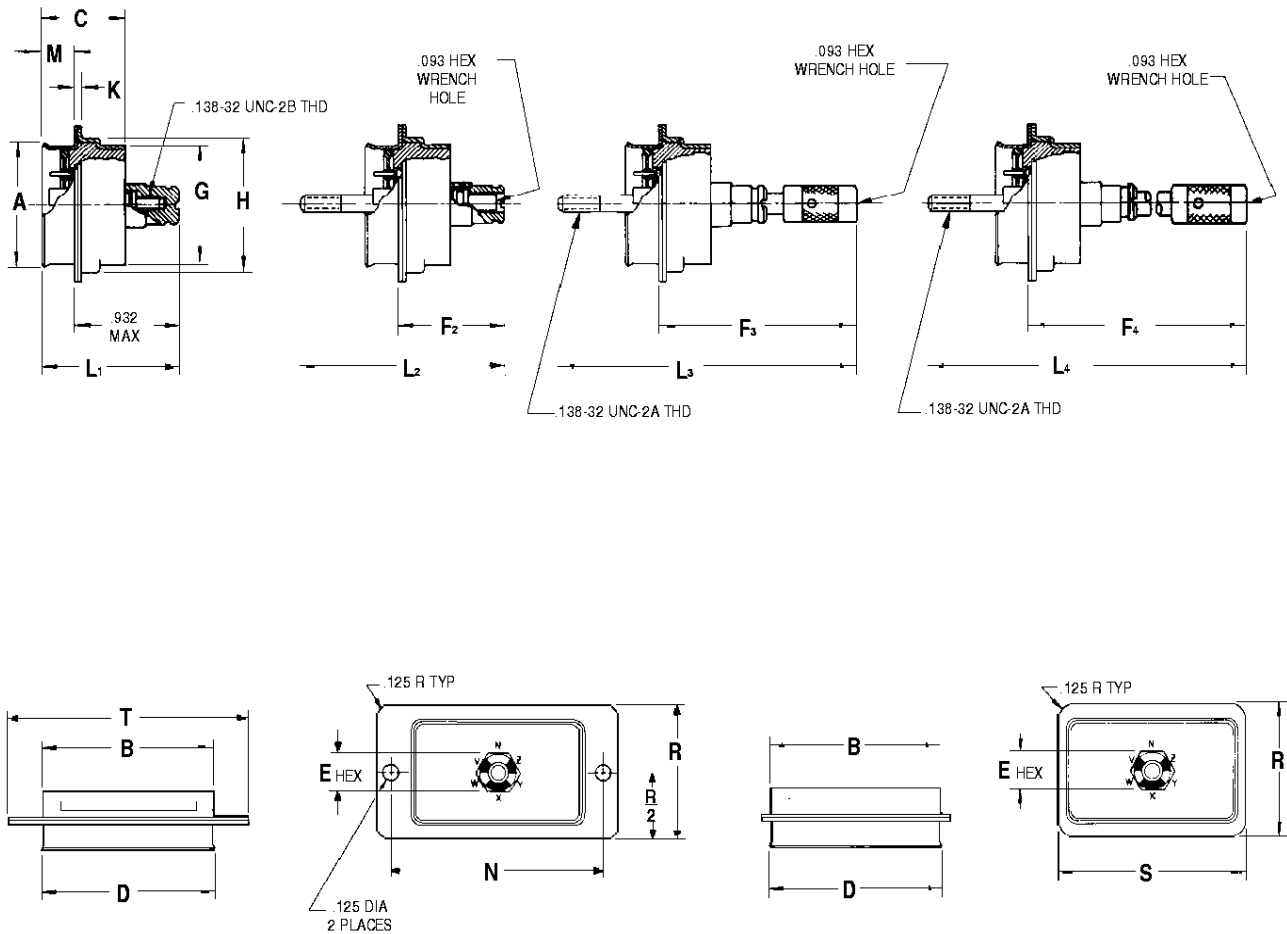
Mates with
Receptacle
Type WB

TYPE WA6A TYPE WA9A

Mates with
Receptacle
Type WB

TYPE WD6A TYPE WD9A

Mates with
Receptacle
Type WB



SHELL SIZE	A MAX	B MAX	C	D MAX	E HEX	F ₂ MAX	F ₃ MAX	F ₄ MAX	G MAX	H MAX	K	L ₁ MAX	L ₂ MAX	L ₃ MAX	L ₄ MAX	M	N	R ±.015	S ±.015	T ±.015
10	.543	1.156	.487	1.215	.312	.760	1.445	2.185	.478	.578	.045	1.161	1.449	2.105	2.840	.228	1.625	.725	1.308	1.945
12	.543	1.996	.487	2.055	.312	.760	1.445	2.185	.478	.578	.045	1.161	1.449	2.105	2.840	.228	2.460	.725	2.148	2.780
14	.892	1.380	.487	1.439	.312	.760	1.445	2.185	.830	.930	.045	1.161	1.449	2.105	2.840	.228	1.718	1.077	1.532	1.990
16	.727	2.004	.487	2.063	.312	.760	1.445	2.185	.655	.755	.045	1.161	1.449	2.105	2.840	.228	2.470	.902	2.156	2.790
18	.727	3.342	.487	3.401	.312	.760	1.445	2.185	.655	.755	.045	1.161	1.449	2.105	2.840	.228	3.808	.902	3.494	4.128