

Complete TDM-3730 multimedia development board compatible with any display through LVDS, TTL, HDMI, VGA, S-Video interfaces.

Expand storage options with USB, SATA and micro-SD card slot.

Record and play back audio and video easily over the Composite, S-video interfaces, audio jacks and speakers and Camera expansion interface.

Communicate over LAN, RS-232, RS-422/485, SPI, I²C to control remote or external devices or connect over a 3G data module to the outside world.

System

System on module Compatible with TDM-3730 by a 200 pin SO-DIMM connector (**B1**)
 RTC with backup battery (**11**)

Interfaces

Connectors 3 standard-USB hosts (**21, 22**)
 1 mini-USB device/ OTG (**13**)
 RJ-45 LAN connector (**20**)
 micro-SD card slot (**bottom**)
 Stereo audio in/out 3.5 mm (**17,18**)
 Microphone 3.5 mm (**16**)
 2W amplified speaker (**14, 15**)
 18 bit LVDS and touchpanel (**27**)
 TTL & touchpanel for 4.3" LCD
 TTL & touchpanel for 7" LCD (**1**)
 RCA composite in (**19**)
 S-video out (**12**)
 HDMI connector (**23**)
 MiniPCIe slot (**bottom**) +
 SIM card (**25**) for 3G module slot (**bottom**)

Expansion header VGA by pinheader (**26**), Camera expansion (**10**), keypad (**30**), SPI (**3**), RS-232 (**6**), UART, RS-422/485 (**8**), I²C, GPIO

Power

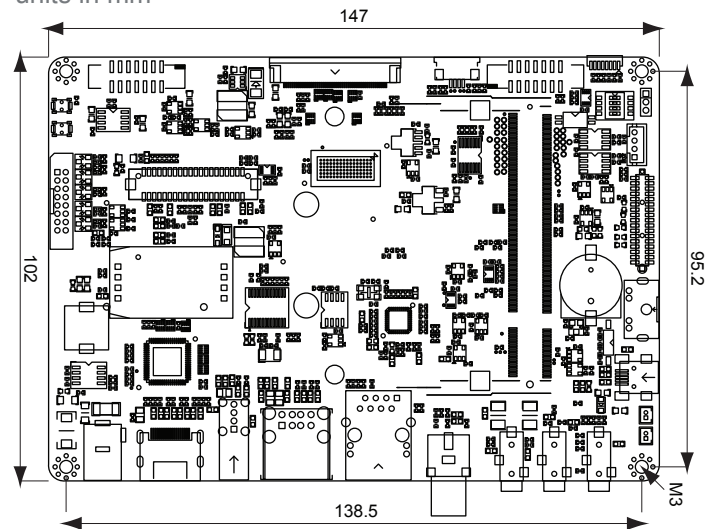
Input power 12 VDC

Environmental and Mechanical

Temperature Commercial: 0° to 50° C
 Humidity 10-90%
 Dimensions 147 x 102 mm (5¾ x 4 inch)
 Weight 92 grams
 Shock 50G / 25ms
 Vibration 20G / 0-600 Hz

Dimensions

units in mm



Order Information

Blizzard Base board for TDM-3730 series

ARM Expansion Modules

TCM-500A 5 MP camera module

Development kits available

TechNexion



Phone: +886-2-8227-3585
 E-mail: sales@technexion.com
 Web: http://www.technexion.com

