

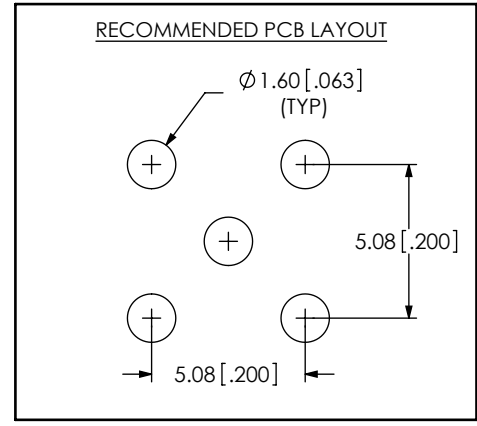
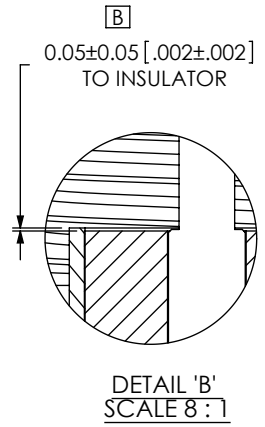
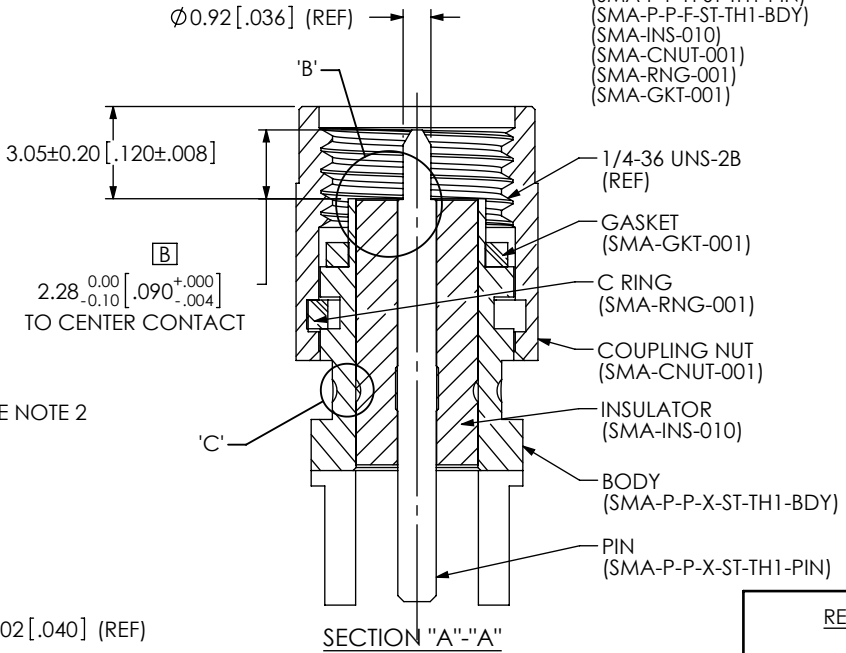
DESIGNED & DIMENSIONED  
IN MILLIMETERS[INCHES]

**Pb** THIS PRODUCT MANUFACTURED  
WITH LEAD-FREE PROCESSING

SMA-P-P-X-ST-TH1

GENDER  
-P: PLUG  
TYPE  
-P: PCB  
TERMINATION  
-TH1: THROUGH HOLE  
ORIENTATION  
-ST: STRAIGHT

PLATING SPECIFICATION  
-H: GOLD (SEE NOTES 7 & 8)  
(SMA-P-P-H-ST-TH1-PIN)  
(SMA-P-P-F-ST-TH1-BDY)  
(SMA-INS-010)  
(SMA-CNUT-001)  
(SMA-RNG-001)  
(SMA-GKT-001)



NOTES:

- REPRESENTS A CRITICAL DIMENSION.
- STAKE AROUND CIRCUMFERENCE 4 INDENTS EQUALLY SPACED.
- PUSHOUT FORCE FOR INSULATOR: 44.48 N[10 LB] MIN.
- CENTER CONTACT PUSHOUT FORCE : 26.69 N [6 LB] MIN.
- PARTS TO BE PACKAGED IN TRAYS; IF QUANTITY IS LESS THAN HALF TRAY, PARTS TO BE PACKAGED IN COHESIVE FOAM
- RoHS COMPLIANT.
- COMPONENT PLATING DESIGNATIONS:  
-H: 0.000030" MIN. GOLD OVER 0.000050" MIN. NICKEL.  
-F: 0.000003" MIN. GOLD OVER 0.000050" MIN. NICKEL.
- ASSEMBLY PLATING DESIGNATIONS:  
-H: (CENTER CONTACT)-H  
(OUTER CONTACT)-F

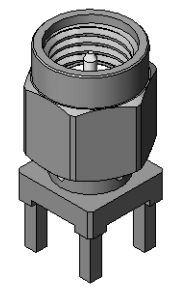
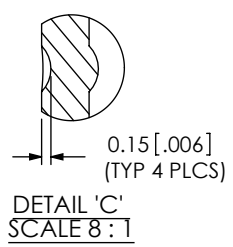


FIG. 1  
SMA-P-P-X-ST-TH1 SHOWN

F:\DWG\MISC\MKTG\SMA-P-P-X-ST-TH1-MKT.SLDDRW		<p><b>PROPRIETARY NOTE</b> THIS DOCUMENT CONTAINS INFORMATION CONFIDENTIAL AND PROPRIETARY TO SAMTEC, INC. AND SHALL NOT BE REPRODUCED OR TRANSFERRED TO OTHER DOCUMENTS OR DISCLOSED TO OTHERS OR USED FOR ANY PURPOSE OTHER THAN THAT WHICH IT WAS OBTAINED WITHOUT THE EXPRESSED WRITTEN CONSENT OF SAMTEC, INC.</p>	
<p>UNLESS OTHERWISE SPECIFIED, DIMENSIONS ARE IN MILLIMETERS. TOLERANCES ARE: DECIMALS ANGLES .X: ±0.3 [.01] 2° .XX: ±0.13 [.005] .XXX: ±0.051 [.0020]</p>		<p>520 PARK EAST BLVD, NEW ALBANY, IN 47150 PHONE: 812-944-6733 FAX: 812-948-5047 e-Mail: info@SAMTEC.com code: 55322</p>	
<p><b>MATERIAL:</b> DO NOT SCALE DRAWING SHEET SCALE: 4:1 SEE TABLE 1</p>		<p>DESCRIPTION: SMA STRAIGHT, THROUGH HOLE PLUG- 50 OHM</p>	
<p>SHELL, BODY CONTACT: BRASS GASKET: SILICON DIELECTRIC: PTFE RING: STAINLESS STEEL</p>		<p>DWG. NO. <b>SMA-P-P-X-ST-TH1</b></p>	
<p>BY: R MUSSER 02/19/2008</p>		<p>SHEET 1 OF 1</p>	