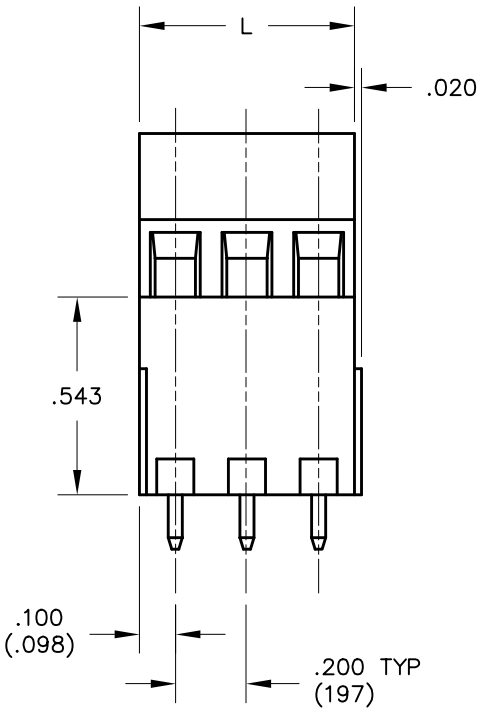
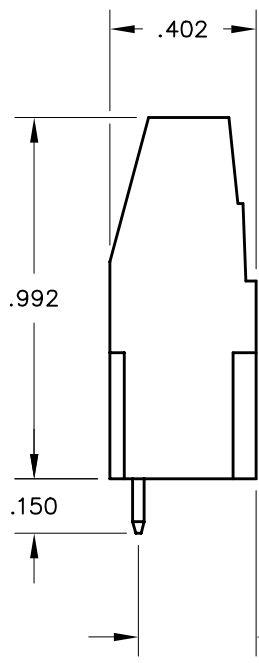


REV	ECN	APPD
-	4785	

L=PITCH X POSITIONS

NOTES:

- 1 PARTS GREATER THAN 3 POSITIONS ASSEMBLED WITH APPROPRIATE COMBINATIONS OF 2 AND 3 POSITION MODULES. (3 POSITION MODULE SHOWN)
- 2 .197 [5mm] PITCH DIMENSIONS INDICATED IN PARENTHESES.



UL RATINGS
 CURRENT - 17.5A
 VOLTAGE - 300V
 U.L. FILE NO.

SF RATINGS
 CURRENT - 17.5A
 VOLTAGE - 300V
 CSA FILE NO.

ESMTXXX20

- 1 NUMBER OF POSITIONS
- 2 PITCH:
 1=.197[5MM]
 2=.200[5.08MM]

INSTALLATION RECOMMENDATIONS

WIRE RANGE: 12-30 AWG
 WIRE STRIP LENGTH: .216-.256
 TIGHTENING TORQUE: 4.4 LB-IN.

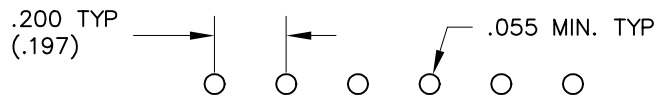
MATERIALS

HOUSING: POLYAMIDE 6,6, COLOR: BLACK
 CONTACT: COPPER ALLOY, TIN PLATED
 SCREW / CAGE CLAMP: COPPER ALLOY, NICKEL PLATED

OPERATING TEMPERATURE RANGE: -40°C TO 110°C
 RECOMMENDED PCB THICKNESS: .110 MAX

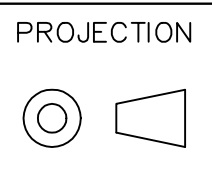
DIN VDE 0627:1986
 DIN VDE 0110-1:1989
 EN 60947-1:1991
 EN 60947-7-1:1992

CURRENT - 17.5A
 VOLTAGE - 250V
 TUV FILE NO.



DIMENSIONS
 ANSI Y14.5M
 UNITS: INCHES
 ACAD FILE

TOLERANCES
 .XX ±.01
 .XXX ±.005
 ANGLES ±2°



SPECIFICATION DRAWING

ENGR
 B. JAWORSKI 11/1/01

pcd TITLE
 ESMT TERMINAL BLOCK
 MID PROFILE, MID TOWER
 .200/.197 PITCH

ORIGINAL STAMPED IN RED

THIS DOCUMENT CONTAINS PROPRIETARY INFORMATION WHICH IS THE CONFIDENTIAL PROPERTY OF PCD, INC. PEABODY, MA, USA

CHKD
 APPD

SIZE A DWG NO. ESMT02120 REV -

CODE: 58982 SCALE: NONE SHEET 1 OF 1