

# C MOUNT VB TYPE POWER TRANSFORMERS

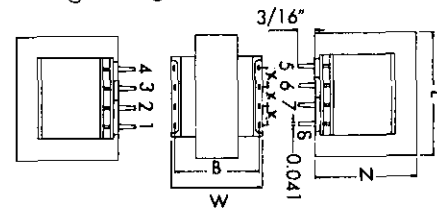
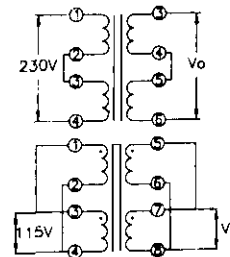


E58127  
E78675  
E154515

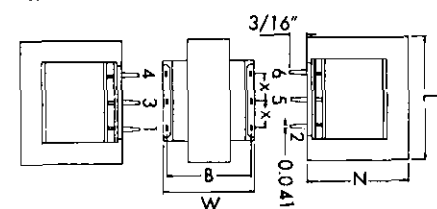
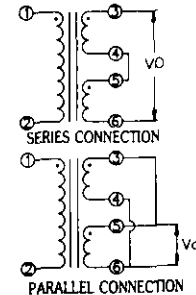
## CLASS A, B AND F INSULATION SYSTEMS FILE NO. E154515 FOR CLASS B AND F

PRIMARY 50/500Hz		SECONDARY RMS RATING		
SINGLE 115V (6 pin)	DUAL 115V/230V (8 pin)	SERIES	PARALLEL VA	SIZE
VB- 10-90	DVB 10-90	10.0V C.T. @ 90mA	5.0V @ 180mA	1.0
VB- 10-120	DVB 10-120	10.0V C.T. @ 120mA	5.0V @ 240mA	1.2
VB- 10-440	DVB 10-440	10.0V C.T. @ 440mA	5.0V @ 880mA	4.4
VB- 10-1000	DVB 10-1000	10.0V C.T. @ 1000mA	5.0V @ 2000mA	10.0
VB- 10-2400	DVB 10-2400	10.0V C.T. @ 2400mA	5.0V @ 4800mA	24.0
VB- 12-70	DVB 12-70	12.6V C.T. @ 70mA	6.3V @ 140mA	1.0
VB- 12-100	DVB 12-100	12.6V C.T. @ 100mA	6.3V @ 200mA	1.2
VB- 12-350	DVB 12-350	12.6V C.T. @ 350mA	6.3V @ 700mA	4.4
VB- 12-800	DVB 12-800	12.6V C.T. @ 800mA	6.3V @ 1600mA	10.0
VB- 12-2000	DVB 12-2000	12.6V C.T. @ 2000mA	6.3V @ 4000mA	24.0
VB- 16-55	DVB 16-55	16.0V C.T. @ 55mA	8.0V @ 110mA	1.0
VB- 16-75	DVB 16-75	16.0V C.T. @ 75mA	8.0V @ 150mA	1.2
VB- 16-260	DVB 16-260	16.0V C.T. @ 260mA	8.0V @ 520mA	4.4
VB- 16-640	DVB 16-640	16.0V C.T. @ 640mA	8.0V @ 1280mA	10.0
VB- 16-1500	DVB 16-1500	16.0V C.T. @ 1500mA	8.0V @ 3000mA	24.0
VB- 20-45	DVB 20-45	20.0V C.T. @ 45mA	10.0V @ 90mA	1.0
VB- 20-60	DVB 20-60	20.0V C.T. @ 60mA	10.0V @ 120mA	1.2
VB- 20-220	DVB 20-220	20.0V C.T. @ 220mA	10.0V @ 440mA	4.4
VB- 20-500	DVB 20-500	20.0V C.T. @ 500mA	10.0V @ 1000mA	10.0
VB- 20-1200	DVB 20-1200	20.0V C.T. @ 1200mA	10.0V @ 2400mA	24.0
VB- 24-35	DVB 24-35	24.0V C.T. @ 35mA	12.0V @ 70mA	1.0
VB- 24-50	DVB 24-50	24.0V C.T. @ 50mA	12.0V @ 100mA	1.2
VB- 24-180	DVB 24-180	24.0V C.T. @ 180mA	12.0V @ 360mA	4.4
VB- 24-450	DVB 24-450	24.0V C.T. @ 450mA	12.0V @ 900mA	10.0
VB- 24-1000	DVB 24-1000	24.0V C.T. @ 1000mA	12.0V @ 2000mA	24.0
VB- 28-30	DVB 28-30	28.0V C.T. @ 30mA	14.0V @ 60mA	1.0
VB- 28-40	DVB 28-40	28.0V C.T. @ 40mA	14.0V @ 80mA	1.2
VB- 28-160	DVB 28-160	28.0V C.T. @ 160mA	14.0V @ 320mA	4.4
VB- 28-380	DVB 28-380	28.0V C.T. @ 360mA	14.0V @ 720mA	10.0
VB- 28-800	DVB 28-800	28.0V C.T. @ 800mA	14.0V @ 1600mA	24.0
VB- 34-25	DVB 34-25	34.0V C.T. @ 25mA	17.0V @ 50mA	1.0
VB- 34-35	DVB 34-35	34.0V C.T. @ 35mA	17.0V @ 70mA	1.2
VB- 34-125	DVB 34-125	34.0V C.T. @ 125mA	17.0V @ 250mA	4.4
VB- 34-300	DVB 34-300	34.0V C.T. @ 300mA	17.0V @ 600mA	10.0
VB- 34-700	DVB 34-700	34.0V C.T. @ 700mA	17.0V @ 1400mA	24.0
VB- 40-20	DVB 40-20	40.0V C.T. @ 20mA	20.0V @ 40mA	1.0
VB- 40-30	DVB 40-30	40.0V C.T. @ 30mA	20.0V @ 60mA	1.2
VB- 40-110	DVB 40-110	40.0V C.T. @ 110mA	20.0V @ 220mA	4.4
VB- 40-250	DVB 40-250	40.0V C.T. @ 250mA	20.0V @ 500mA	10.0
VB- 40-600	DVB 40-600	40.0V C.T. @ 600mA	20.0V @ 1200mA	24.0
VB- 56-15	DVB 56-15	56.0V C.T. @ 15mA	28.0V @ 30mA	1.0
VB- 56-20	DVB 56-20	56.0V C.T. @ 20mA	28.0V @ 40mA	1.2
VB- 56-80	DVB 56-80	56.0V C.T. @ 80mA	28.0V @ 160mA	4.4
VB- 56-180	DVB 56-180	56.0V C.T. @ 180mA	28.0V @ 360mA	10.0
VB- 56-420	DVB 56-420	56.0V C.T. @ 420mA	28.0V @ 840mA	24.0
VB- 120-8	DVB 120-8	120.0V C.T. @ 8mA	60.0V @ 16mA	1.0
VB- 120-10	DVB 120-10	120.0V C.T. @ 10mA	60.0V @ 20mA	1.2
VB- 120-35	DVB 120-35	120.0V C.T. @ 35mA	60.0V @ 70mA	4.4
VB- 120-85	DVB 120-85	120.0V C.T. @ 85mA	60.0V @ 170mA	10.0
VB- 120-200	DVB 120-200	120.0V C.T. @ 200mA	60.0V @ 400mA	24.0

SINGLE 115V/230V  
50/60 Hz 6 PIN TYPE



SINGLE 115V/230V  
50/60Hz 6 PIN TYPE



SIZE (VA)	L	W	H	6 PIN X	8 PIN A	B
1.0	1.375 (35)	1.125 (28.58)	1.188 (30.18)	0.312 (7.92)	.200 (5.80)	1.000 (25.40)
1.2	1.375 (35)	1.125 (28.58)	1.188 (30.18)	0.312 (7.92)	.200 (5.80)	1.000 (25.40)
4.4	1.625 (41)	1.250 (31.75)	1.375 (34.93)	0.400 (10.16)	.250 (6.35)	1.100 (27.94)
10.0	1.875 (48)	1.438 (36.53)	1.625 (41.28)	0.400 (10.16)	.250 (6.35)	1.300 (33.02)
24.0	1.625 (41)	2.250 (57.15)	1.375 (34.93)	0.400 (10.16)	.250 (6.35)	2.100 (53.34)