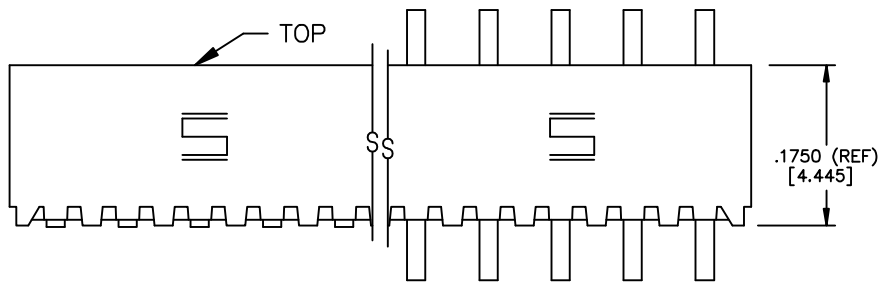
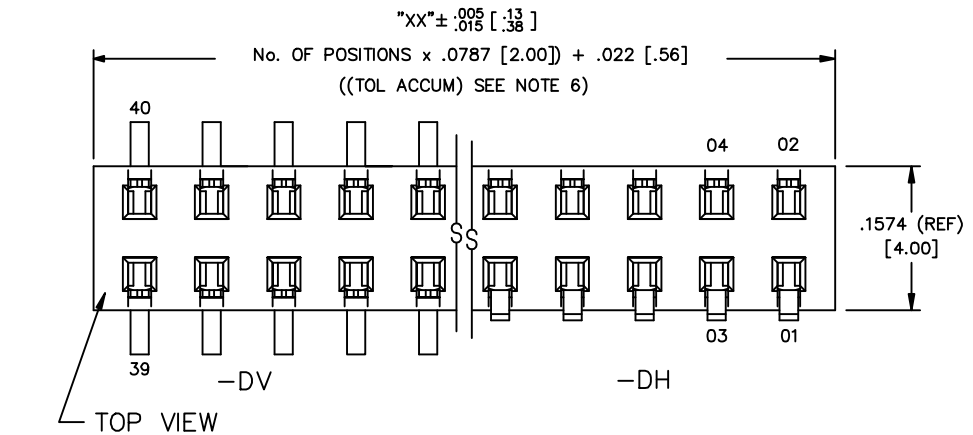
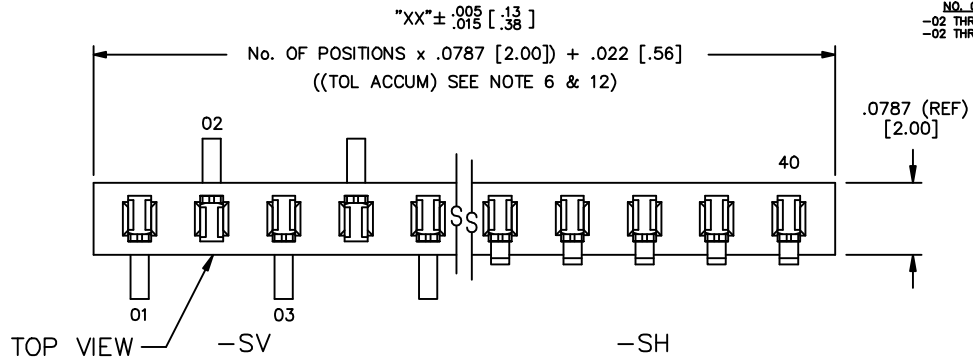


| | | | | | |
|-------------------------------|-----------------------------------|------------------------|------|-----------------|--|
| DIMENSIONS ARE IN INCHES | | UNLESS OTHERWISE NOTED | | TOLERANCES ARE: | |
| ONE PLC DECIMALS ± .1 [2.54] | THREE PLC DECIMALS ± .005 [.127] | ANGLES | ± 2° | | |
| TWO PLC DECIMALS ± .01 [.254] | FOUR PLC DECIMALS ± .0020 [.0508] | | | | |

TABLE 2 (PARTS TO BE TUBED IN DIRECTION OF ARROW)



MMS-1XX-02-XXX-XX-XX-XXX

- NO. OF POSITIONS PER ROW
 -02 THRU -40 FOR DOUBLE ROW
 -02 THRU -40 FOR SINGLE ROW
- LEAD STYLE
 -02 = SURFACE MOUNT (SEE TABLE 1)
- PLATING
 -S: SELECTIVE
 -L: LIGHT SELECTIVE
 -F: FLASH SELECTIVE
 -T: TIN
 -SM: SELECTIVE GOLD, MATTE TIN TAIL
 -LM: LIGHT SELECTIVE GOLD, MATTE TIN TAIL
 -FM: FLASH SELECTIVE GOLD, MATTE TIN TAIL
 -TM: MATTE TIN
 -LT: LIGHT SELECTIVE TIN/LEAD
 -H: HEAVY GOLD

- POLARIZING OPTION
 INDICATE POSITION (USE PK-07-N)
- OPTIONS
 -LC: LOCKING CLIP (NOT AVAILABLE ON -SV) (USE LC-06-TM, SEE FIG. 2, SHT. 2) (SEE NOTE 11)
 -P: PICK & PLACE PAD (-DV & -SV ONLY, 4 POS. MIN.) (-DV: USE PPP-03)(-SV: USE PPP-09) (SEE FIG. 5, SHT. 3)
 -M: METAL PICK & PLACE PAD (-DV ONLY) (USE MPP-03)(SEE FIG. 3, SHT. 3)
 -A: MOLDED ALIGNMENT PIN (USE MMS-XX-D-VXX) (-DV ONLY; AVAIL ON 02-40 POSITIONS) (SEE FIG. 4, SHT. 3)
 -K: POLYIMIDE FILM PAD (-DV, 4 POS. MIN & -SV ONLY, 3 POS. MIN.) (.005 [.13] THICKNESS WITH SILICONE ADHESIVE)(SEE FIG. 6, SHT. 3) (USE K-500-300)
 -TR: TAPE AND REEL PACKAGING (SEE FIG. 7, SHT. 4)

- ENTRY/ROW SPECIFICATION
 -SH = SINGLE ROW, HORIZONTAL ENTRY (USE MMS-XX-S -SEE NOTE 6)
 -DH = DOUBLE ROW, HORIZONTAL ENTRY (USE MMS-XX-D -SEE NOTE 6)
 -SV = SINGLE ROW, VERTICAL (TOP) ENTRY
 -DV = DOUBLE ROW, VERTICAL (TOP) ENTRY

- NOTES:
 1. CONTACT RETENTION FORCE: SINGLE ROW .5 LB MIN. CONTACT RETENTION FORCE: DOUBLE ROW 1 LB MIN.
 2. MAX ALLOWABLE SWAY: 2' IN EITHER DIRECTION.
 3. 1st POS. WILL ALWAYS POINT DOWN ON TOP VIEW AS SHOWN.
 4. [] DIMS ARE IN METRIC AND ARE NOT CONTROLLING DIMS.
 5. (C) REPRESENTS A CRITICAL DIMENSION.
 6. CUT BODIES FROM MMS-40-D AND MMS-40-S FOR ALL STYLES EXCEPT -LC. FOR -LC, USE POSITIONALIZED BODIES.
 7. LEAD STYLE -02-SH POSITIONS 02 THRU 04 TO BE PACKAGED IN BOXES. (ALL OTHER ROW SPECIFICATIONS SHOULD BE TUBED ACCORDING TO TABLE 2, REGARDLESS OF POSITION).
 8. THIS DIMENSION TO BE MEASURED AT BEND.
 9. MAX ALLOWABLE BURR HEIGHT .003 [.08].
 10. MAX CUT FLASH .020[.51]
 11. DUE TO THE HIGH AMOUNT OF INSERTION FORCE NEEDED, THE -LC OPTION IS NOT COMPATIBLE WITH AUTO PLACEMENT. SAMTEC RECOMMENDS MANUAL PLACEMENT FOR ALL ASSEMBLIES WITH THE -LC OPTION.
 12. FOR -SV LEAD STYLE: EVEN CUTS LOSE 2 POSITIONS PER CUT; ODD CUTS LOSE 1 POSITION PER CUT.

| LEAD STYLE | PACKAGING TUBE | PLUG |
|--------------------------------|----------------|----------|
| -DV (NOT 4 POS), -DV-LC, -DV-A | PT-1-24-02-17 | TP-09 |
| -DV (4 POS ONLY) | PT-1-24-01-11B | TP-09 |
| -DV-M, -DV-LC-M, -DV-A-M | PT-1-24-01-63 | TP-24 |
| -DV-K, -DV-LC-K, -DV-A-K | PT-1-24-02-63 | TP-24 |
| -DV-P, -DV-LC-P, -DV-A-P | PT-1-24-03-15 | TP-03 |
| -SH, -SH-LC | PT-1-24-02-16 | TP-24 |
| -DH | PT-1-24-03-16 | TP-03 |
| -DH-P, -DH-K | PT-1-24-06-17 | TP-24 |
| -DH-LC | PT-1-24-02-17 | TP-09 |
| -SV | PT-1-24-01-16 | TP-12 |
| -SV (-02 THRU -04 POS ONLY) | PT-1-24-01-6B | TP-24-02 |
| -SV-P | PT-1-24-02-16 | TP-24 |
| -SV-K | PT-1-24-03-63 | TP-24 |

SEE NOTE 7 AND FIG. 8.

PROPRIETARY NOTE
 THIS DOCUMENT CONTAINS INFORMATION CONFIDENTIAL AND PROPRIETARY TO SAMTEC INC. AND SHALL NOT BE REPRODUCED OR TRANSMITTED TO OTHER DOCUMENTS OR DISCLOSED TO OTHERS OR USED FOR ANY PURPOSE OTHER THAN THAT FOR WHICH IT WAS OBTAINED WITHOUT THE EXPRESSED WRITTEN CONSENT OF SAMTEC INC.

MISC\MKTG
MMS2ASM

samtec

520 PARK EAST BLVD. NEW ALBANY, INDIANA 47150
 PHONE (812) 944-6733 P.O. BOX 1147
 CODE 55322

| | | |
|-----------------------------|-------------------|--|
| MADE BY: BRATCHER 4-1-94 | ENGINEER APPROVAL | MMS-1XX-02-XXX-XX-XX-XXX SHEET 1 OF 4 |
|-----------------------------|-------------------|--|