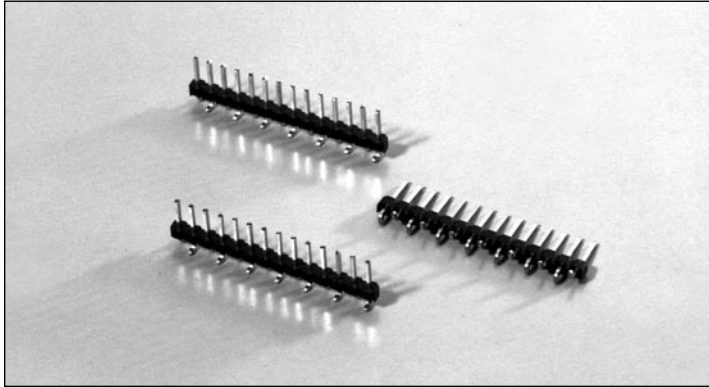


# .100" (2.54mm) Single Row, Surface Mount, Vertical Header



## 9100 SERIES ("POST/BOXE")

PART NUMBER LEGEND

**910X-21-1XX-XX**

**PIN NUMBER**  
(SEE TABLE II)

**NUMBER OF POSITIONS**  
(SEE TABLE I)

**PIN PLATING**  
(SEE NOTE 2)

**MATING CONNECTORS: 9000 SERIES**

### NOTES:

- 1) MATERIALS: INSULATOR - POLYESTER(PET), 30% G.R., U.L. 94V-0, COLOR IS BLACK;  
PINS - PHOSPHOR BRONZE.
- 2) PIN FINISH: 9100 - TIN/LEAD OVER NICKEL PLATE;  
9102 - GOLD (.000015 THICK) OVER NICKEL PLATE (.000030 THICK).  
9103 - SEL. GOLD (.000030 THICK) AND SEL. 90/10 TIN/LEAD (.0001/.0002 THICK) WITH NICKEL UNDERPLATE OVERALL (.000050/.000150 THICK).  
9105 - SEL. GOLD (.000015 THICK) AND SEL. 90/10 TIN/LEAD (.0001/.0002 THICK) WITH NICKEL UNDERPLATE OVERALL (.000050/.000150 THICK).  
910E - SEL. GOLD (.000015 THICK) AND SEL. 90/10 TIN/LEAD (.0001/.0002 THICK) WITH NICKEL UNDERPLATE OVERALL (.000050/.000150 THICK).
- 3) PIN RETENTION: 2 LB MINIMUM.

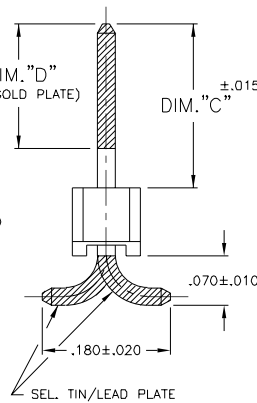
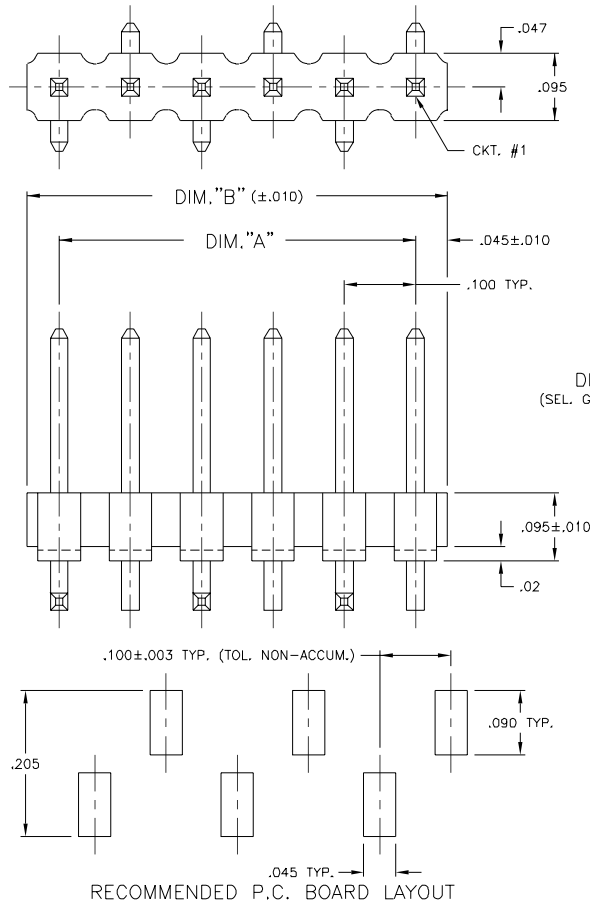


TABLE I

PART No.	No. OF POS.	DIM "A"	DIM "B"
910X-21-102-XX	2	.100	.190
↑-103-↓	3	.200	.290
↑-104-↓	4	.300	.390
↑-105-↓	5	.400	.490
↑-106-↓	6	.500	.590
↑-107-↓	7	.600	.690
↑-108-↓	8	.700	.790
↑-109-↓	9	.800	.890
↑-110-↓	10	.900	.990
↑-111-↓	11	1.000	1.090
↑-112-↓	12	1.100	1.190
↑-113-↓	13	1.200	1.290
↑-114-↓	14	1.300	1.390
↑-115-↓	15	1.400	1.490
↑-116-↓	16	1.500	1.590
↑-117-↓	17	1.600	1.690
↑-118-↓	18	1.700	1.790
↑-119-↓	19	1.800	1.890
↑-120-↓	20	1.900	1.990
↑-121-↓	21	2.000	2.090
↑-122-↓	22	2.100	2.190
↑-123-↓	23	2.200	2.290
↑-124-↓	24	2.300	2.390
↑-125-↓	25	2.400	2.490
↑-126-↓	26	2.500	2.590
↑-127-↓	27	2.600	2.690
↑-128-↓	28	2.700	2.790
↑-129-↓	29	2.800	2.890
↑-130-↓	30	2.900	2.990
↑-131-↓	31	3.000	3.090
↑-132-↓	32	3.100	3.190
↑-133-↓	33	3.200	3.290
↑-134-↓	34	3.300	3.390
↑-135-↓	35	3.400	3.490
↑-136-↓	36	3.500	3.590
↑-137-↓	37	3.600	3.690
↑-138-↓	38	3.700	3.790
↑-139-↓	39	3.800	3.890
↑-140-↓	40	3.900	3.990

TABLE II

PART No.	DIM "C"	DIM "D"
910X-21-1XX-01	.230	.160
910X-21-1XX-02	.320	.200



North and South America:

**Methode Electronics, Inc. Connector Products**

1700 Hicks Road • Rolling Meadows, IL 60008 USA

847-392-3500 • Toll Free: 800-323-6864 • Fax: 847-392-9404

Email: info@methode.com • Web: www.methode.com/connector/index.html

Europe:

**Methode Electronics Ireland, Ltd.**

Unit H, Crossagalla Business Park, Ballysimon Rd. • Limerick, Ireland

+353 (0) 61 401222 • Fax: +353 (0) 61 401942

Email: info@methode.ie • Web: ireland.methode.com/main.html

Far East:

**Methode Electronics Far East, Pte. Ltd.**

1 Tuas Lane, Jurong Town • Singapore 638610

65-68615444 • Fax: 65-68614777

Email: sales@methode.com.sg • Web: www.methode.com/mefe/index.html