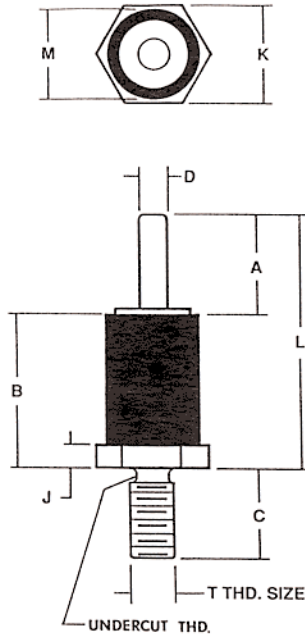


**EMC® Product "SPS" Series**



**Plating:**

- 14: 400μ" Tin terminal, 200μ" Cadmium Chromate base/eyelet
- 4: 30μ" Gold terminal, 200μ" Cadmium Chromate base/eyelet
- 17: 400μ" Tin terminal, 200μ" Nickel base/eyelet
- 52: 400μ" Tin terminal, 200μ" Cadmium Chromate base/eyelet

**Material:**

Terminal: Brass, 1/2-hard, QQ-B-626  
 Base/Eyelet: Brass, 1/2-hard, QQ-B-626  
 Insulator: Diallyl Phthalate, MIL-M-14F Type SDG

**Type 97**

Type	EMC Part #	Flash-over Volt.	A	B	C	D	J	K	L	M	T
97	2636-14-1	12000	.281 (7.14)	.594 (15.09)	.250 (6.35)	.070 (1.78)	.063 (1.60)	.250 (6.35)	.875 (22.23)	.232 (5.89)	6-32
97	2740-52-6	8200	.188 (4.78)	.390 (9.91)	.125 (3.18)	.062 (1.57)	.046 (1.17)	.156 (3.96)	.578 (14.68)	.146 (3.71)	2-56
97	2633-14-1	8000	.281 (7.14)	.375 (9.53)	.375 (9.53)	.070 (1.78)	.063 (1.60)	.250 (6.35)	.656 (16.66)	.232 (5.89)	6-32
97	6042-52-6	6000	.290 (7.37)	.375 (9.53)	.375 (9.53)	.070 (1.78)	.062 (1.57)	.250 (6.35)	.665 (16.89)	.232 (5.89)	6-32
97	6053-52-6	6000	.290 (7.37)	.594 (15.09)	.219 (5.56)	.070 (1.78)	.062 (1.57)	.250 (6.35)	.883 (22.43)	.232 (5.89)	4-40
97	6054-52-6	6000	.290 (7.37)	.594 (15.09)	.219 (5.56)	.070 (1.78)	.062 (1.57)	.250 (6.35)	.883 (22.43)	.232 (5.89)	6-32
97	6055-52-6	6000	.290 (7.37)	.594 (15.09)	.250 (6.35)	.070 (1.78)	.062 (1.57)	.250 (6.35)	.883 (22.43)	.232 (5.89)	6-32
97	6056-52-6	6000	.290 (7.37)	.594 (15.09)	.375 (9.53)	.070 (1.78)	.062 (1.57)	.250 (6.35)	.883 (22.43)	.232 (5.89)	6-32
97	2737-52-6	6000	.188 (4.78)	.234 (5.94)	.125 (3.18)	.062 (1.57)	.046 (1.17)	.156 (3.96)	.422 (10.72)	.146 (3.71)	2-56
97	2738-52-6	6000	.188 (4.78)	.234 (5.94)	.188 (4.78)	.062 (1.57)	.046 (1.17)	.156 (3.96)	.422 (10.72)	.146 (3.71)	2-56
97	2739-52-6	6000	.188 (4.78)	.234 (5.94)	.250 (6.35)	.062 (1.57)	.046 (1.17)	.156 (3.96)	.422 (10.72)	.146 (3.71)	2-56
97	6039-14-1	6000	.290 (7.37)	.375 (9.53)	.219 (5.56)	.070 (1.78)	.062 (1.57)	.250 (6.35)	.665 (16.89)	.232 (5.89)	4-40
97	6040-14-1	6000	.290 (7.37)	.375 (9.53)	.219 (5.56)	.070 (1.78)	.062 (1.57)	.250 (6.35)	.665 (16.89)	.232 (5.89)	6-32
97	6041-14-1	6000	.290 (7.37)	.375 (9.53)	.250 (6.35)	.070 (1.78)	.062 (1.57)	.250 (6.35)	.665 (16.89)	.232 (5.89)	6-32