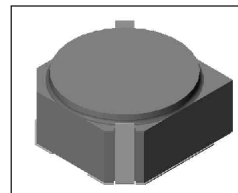


# SMT Power Inductor

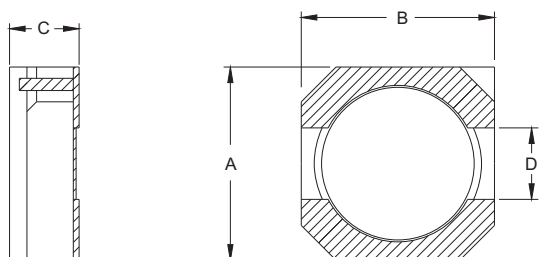
## SIL740 Type

### Features

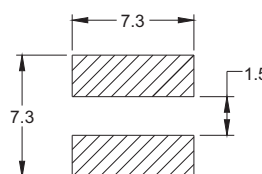
- RoHS compliant.
- Small size (6.6mm\*6.6mm), low profile (4.0mm max. height) SMD type.
- Magnetically shielded, suitable for high density mounting.
- High energy storage and low DCR.
- Provided with embossed carrier tape packing.
- Ideal for power source circuits, DC-DC converter, DC-AC inverters inductor application.
- In addition to the standard versions shown here, customized inductors are available to meet your exact requirements.



### Mechanical Dimension:



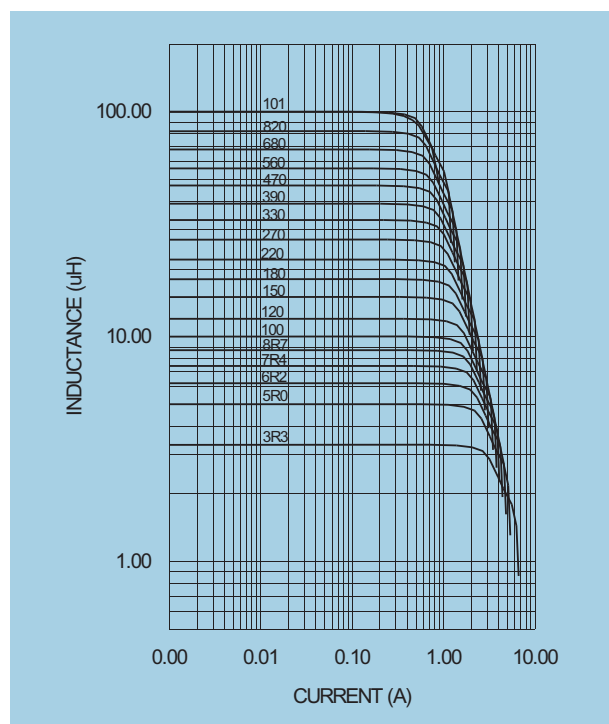
### RECOMMENDED PAD PATTERNS



UNIT:mm/inch  
 A = 7.0 / 0.276 Max.  
 B = 7.0 / 0.276 Max.  
 C = 4.0 / 0.157 Max.  
 D = 2.0±0.1 / 0.079±0.004

### Electrical Characteristics: 25°C: 100KHz, 0.1V

PART NO.	L <sup>1</sup> (uH)	DCR (Ω) MAX	I <sub>rated</sub> <sup>2</sup> (A dc)
SIL740 - R66	0.66	0.006	6.20
SIL740 - 1R0	1.00	0.010	5.00
SIL740 - 1R5	1.50	0.012	4.00
SIL740A - 1R5	1.50	0.013	6.80
SIL740A - 2R0	2.00	0.015	5.80
SIL740 - 2R2	2.20	0.015	4.20
SIL740A - 2R8	2.80	0.024	5.00
SIL740 - 3R3	3.30	0.020	3.50
SIL740A - 3R6	3.60	0.025	4.50
SIL740A - 4R5	4.50	0.027	4.00
SIL740 - 4R7	4.70	0.024	3.00
SIL740 - 5R0	5.00	0.024	2.20
SIL740A - 5R2	5.20	0.031	3.50
SIL740 - 6R2	6.20	0.027	2.50
SIL740 - 7R4	7.40	0.031	2.30
SIL740 - 8R7	8.70	0.034	2.20
SIL740 - 100	10.00	0.038	2.00
SIL740 - 120	12.00	0.053	1.70
SIL740A - 120	12.00	0.070	2.20
SIL740 - 150	15.00	0.057	1.60
SIL740A - 150	15.00	0.084	2.10
SIL740 - 180	18.00	0.092	1.50
SIL740A - 180	18.00	0.105	1.90
SIL740 - 220	22.00	0.096	1.30
SIL740A - 220	22.00	0.128	1.70
SIL740 - 270	27.00	0.109	1.20
SIL740 - 330	33.00	0.124	1.10
SIL740 - 390	39.00	0.138	1.00
SIL740 - 470	47.00	0.155	0.95
SIL740 - 560	56.00	0.202	0.85
SIL740 - 680	68.00	0.234	0.75
SIL740 - 820	82.00	0.324	0.70
SIL740 - 101	100.00	0.358	0.65
SIL740A - 271	270.00	1.050	0.50



1. Tolerance of inductance : ± 30%.
2. I<sub>rated</sub> is the DC current which cause the inductance drop less than 35% of its nominal inductance without current and the surface temperature of the part increase less than 45°C.
3. Operating temperature: -20°C to 105°C (including self-temperature rise).



**DELTA ELECTRONICS, INC.**

(TAOYUAN PLANT CPBG) 252, SAN YING ROAD, KUEISAN INDUSTRIAL ZONE, TAOYUAN SHIEN, 333, TAIWAN, R.O.C.

TEL: 886-3-3591968; FAX: 886-3-3591991

<http://www.deltawww.com>