

SAW Filter 1575.420MHz for GPS - Low loss
Part No: MA04851

Model: T A0176A
REV. NO.: 1

A. MAXIMUM RATING:

1. Input Power Level: 10 dB_m
2. DC voltage: 5 V
3. Operating Temperature: -40°C to +85°C
4. Storage Temperature: -50°C to +100°C

B. ELECTRICAL CHARACTERISTICS:

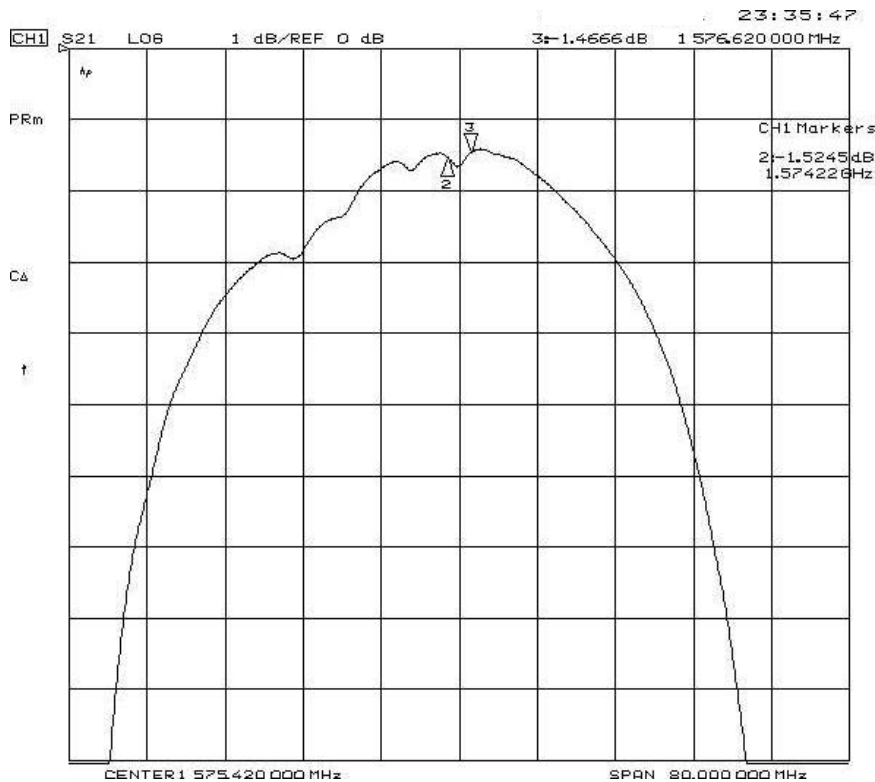
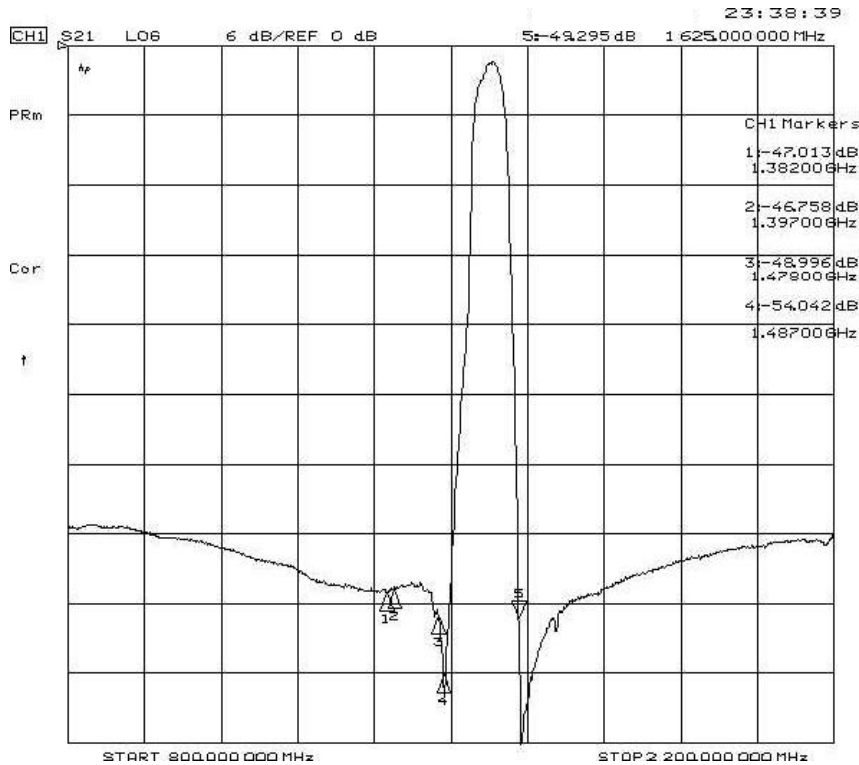
Item	Min.	Typ.	Max.
Center frequency Fc (dB)	-	1575.42	-
Insertion loss 1574.22 ~1576.62 MHz IL (dB)	-	1.5	2.2
Amplitude ripple (p-p) 1574.22 ~ 1576.62 MHz (dB)	-	0.15	1.0
Attenuation (Reference level from 0 dB)			
DC ~ 1382 MHz (dB)	37	40	-
1382 ~ 1397 MHz (IF Image frequency) (dB)	40	47	-
1397 ~ 1478 MHz (dB)	40	45	-
1478 ~ 1487 MHz (Local frequency) (dB)	40	47	-
1487 ~ 1500 MHz (dB)	30	52	-
1625 ~ 1640 MHz (dB)	30	49	-
1640 ~ 2000 MHz (dB)	38	42	-
2000 ~ 2800 MHz (dB)	33	41	-
2800 ~ 3000 MHz (dB)	30	34	-
VSWR within 1574.22 ~1576.62 MHz	-	1.1	2.0
Source impedance Z _s (Ω)	-	50	-
Load impedance Z _L (Ω)	-	50	-

Note1. No matching network required for operation at 50 Ω

SAW Filter 1575.420MHz for GPS - Low loss
Part No: MA04851

Model: T A0176A
REV. NO.: 1

C. Frequency Characteristics:

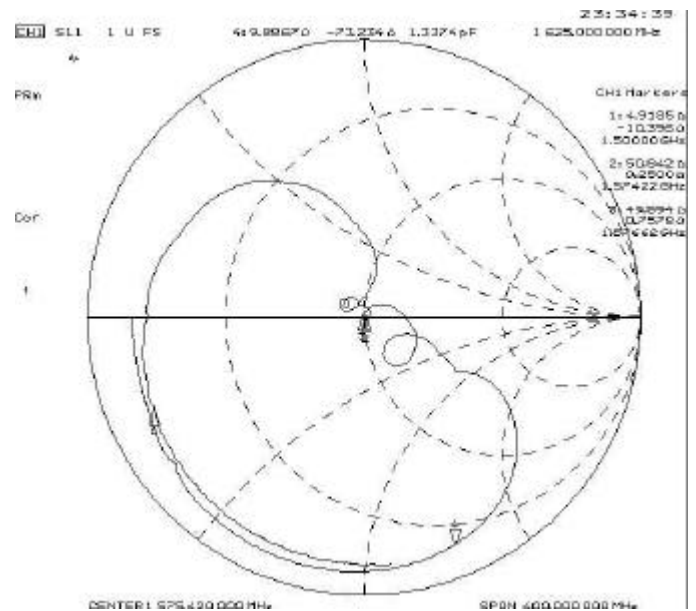
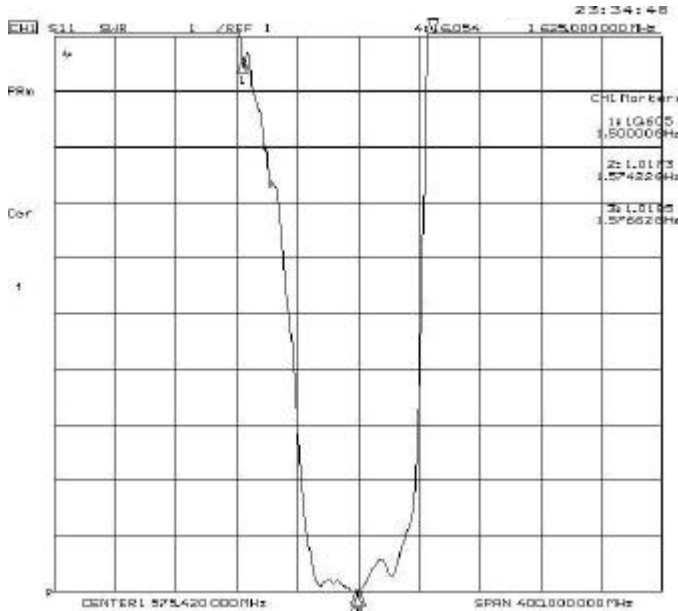


SAW Filter 1575.420MHz for GPS - Low loss
Part No: MA04851

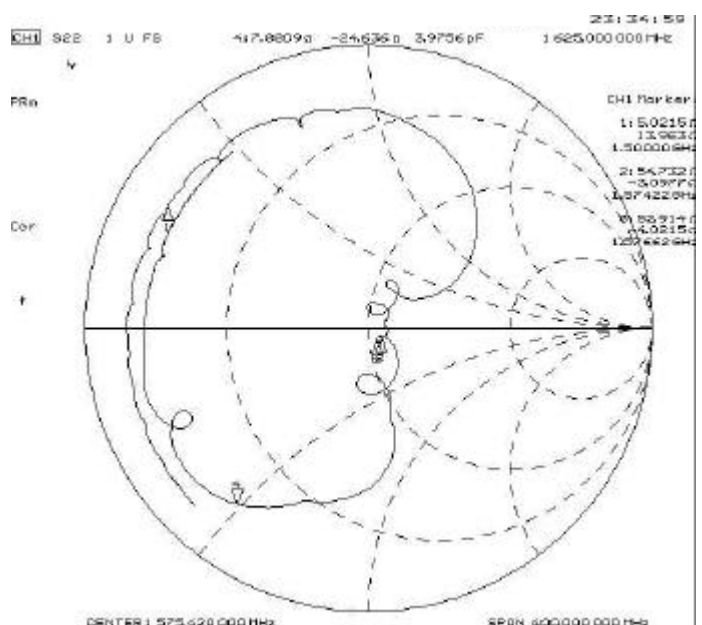
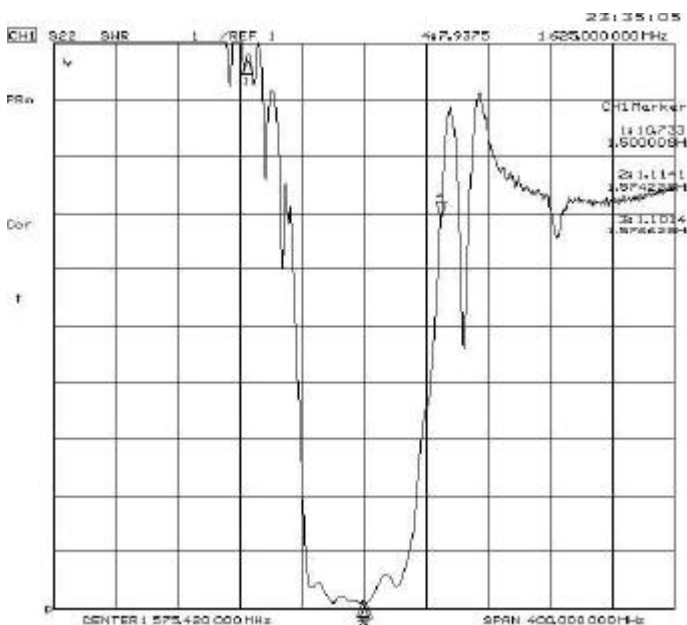
Model: TA0176A
REV. NO.: 1

D. Reflections Functions :

S11 VSWR



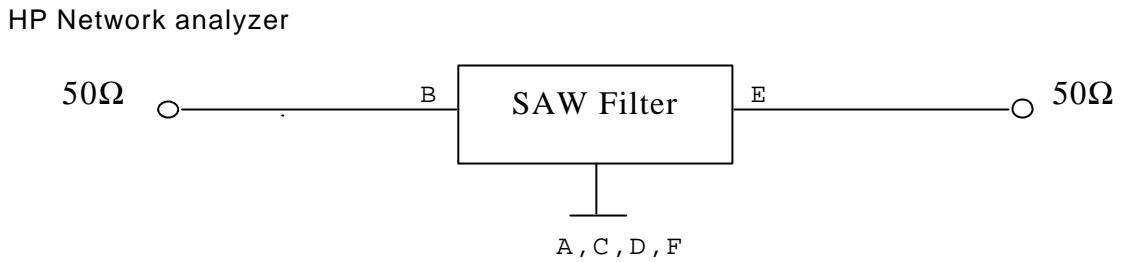
S22 VSWR



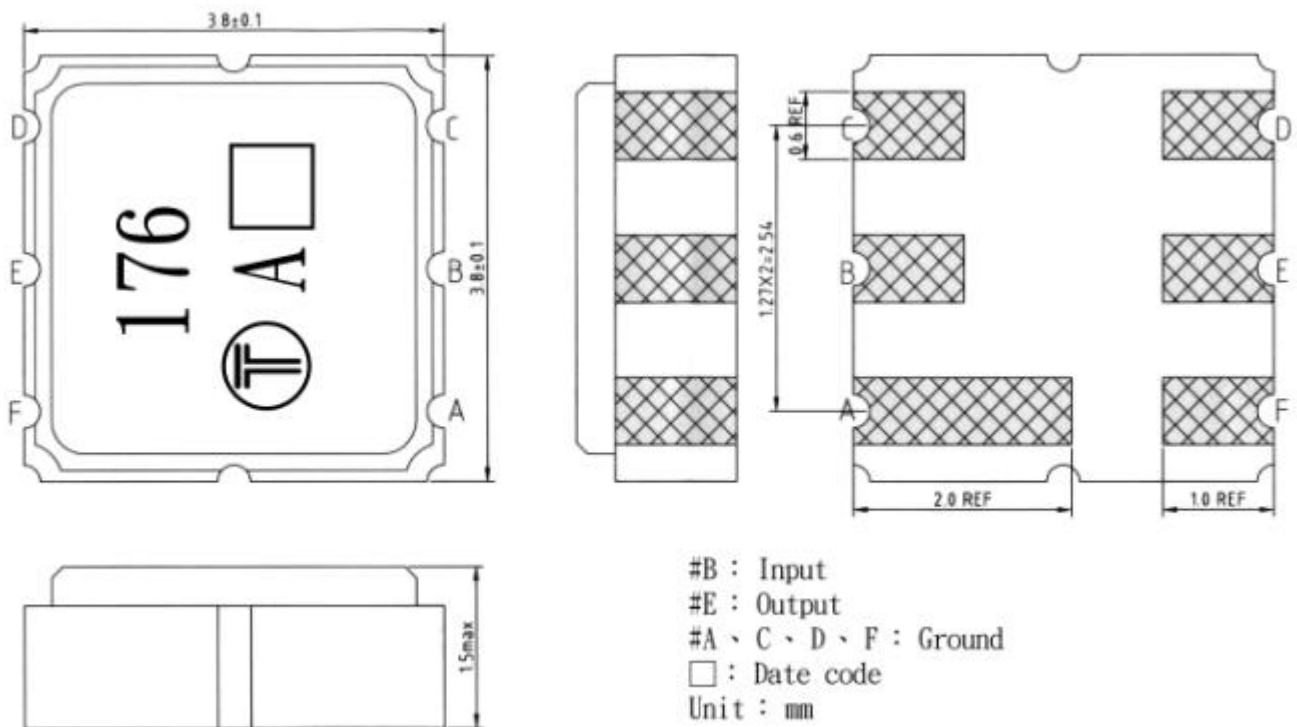
SAW Filter 1575.420MHz for GPS - Low loss
Part No: MA04851

Model: T A0176A
REV. NO.: 1

E. MEASUREMENT CIRCUIT:



F. OUTLINE DRAWING:

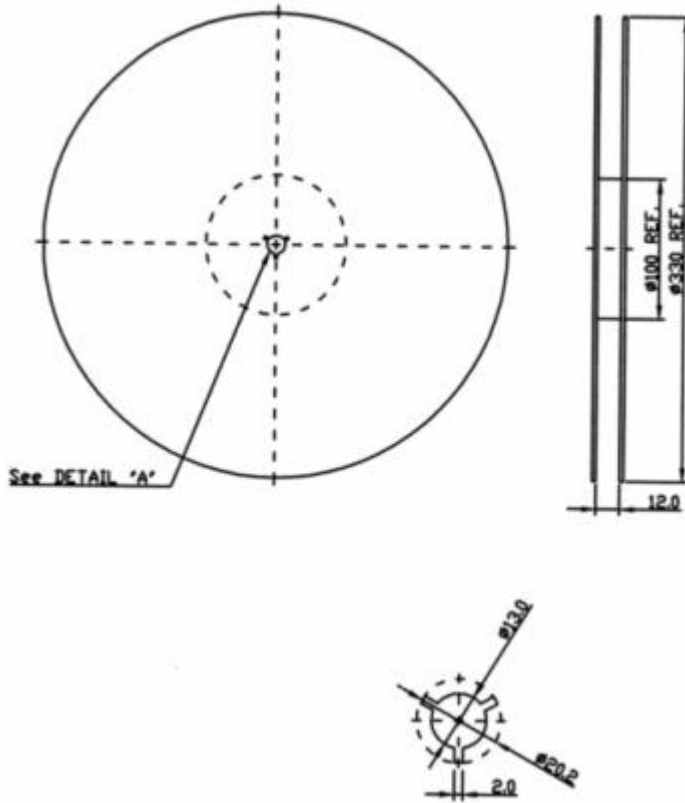


SAW Filter 1575.420MHz for GPS - Low loss
Part No: MA04851

Model: T A0176A
REV. NO.: 1

G. PACKING:

1. REEL DIMENSION



2. TAPE DIMENSION

