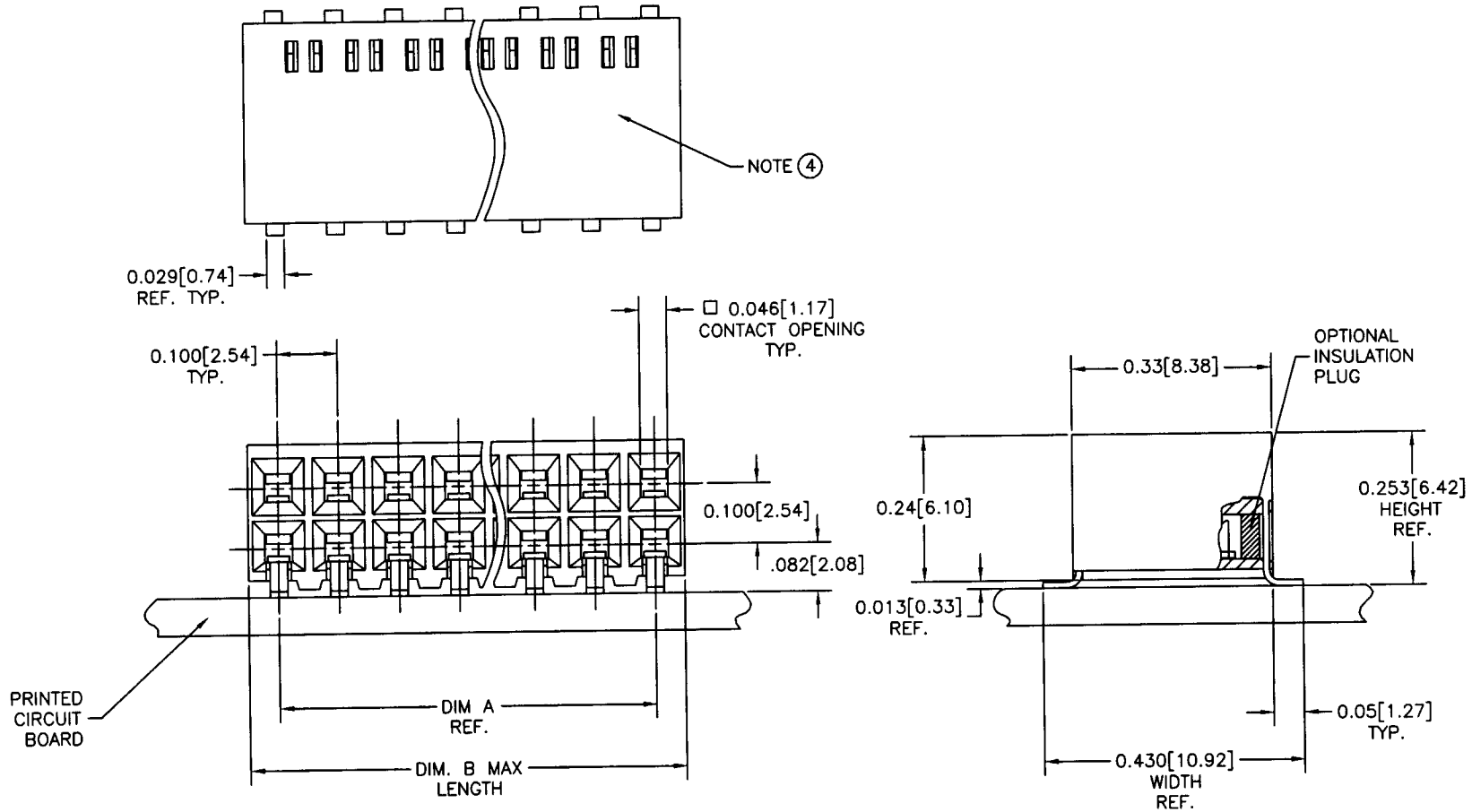


Tous droits strictement réservés. Reproduction ou communication a des tiers interdite sous quelque forme que ce soit sans autorisation écrite du propriétaire. Propriété de ©BERG ELECTRONICS. Droits de reproduction BERG ELECTRONICS INC.

All rights strictly reserved. Reproduction or issue to third parties in any form whatever is not permitted without written authority from the proprietor. Property of ©BERG ELECTRONICS Copyright BERG ELECTRONICS INC.

PRODUCT NUMBER
SEE CHART



mat'l. code				tolerances unless otherwise specified				CUSTOMER COPY		BERG ELECTRONICS	
ltr	ecn no	dr	date	linear	.X ±.3		projection	title			
E	REDRAW	JGS	3/21/90		.XX ±.13			D.R. .15u" / .38u Au			
F	V10816	MSC	6/27/91		.XXX ±.051			SMT HCC			
G	V70467	RGD	10/16/97		0' ±2'						
				angles	0' ±2'		INCH/MM	product family		code	
				dr	J.SHREINER	3/21/90		SMT			
				engr	M.HAHN	3/21/90		size		sheet	
				chr	M.HAHN	3/21/90		68064		1 of 6	
				appd	M.HAHN	3/21/90	scale	A4			
							8:1				
sheet index	revision sheet	G	G	G	G	G	G				
		1	2	3	4	5	6				

cage code
22526

Tous droits strictement réservés. Reproduction ou communication à des tiers interdite sous quelque forme que ce soit sans autorisation écrite du propriétaire. Propriété de ©BERG ELECTRONICS. Droits de reproduction BERG ELECTRONICS INC.



All rights strictly reserved. Reproduction or issue to third parties in any form whatever is not permitted without written authority from the proprietor. Property of ©BERG ELECTRONICS Copyright BERG ELECTRONICS INC.

PRODUCT NUMBER
SEE CHART

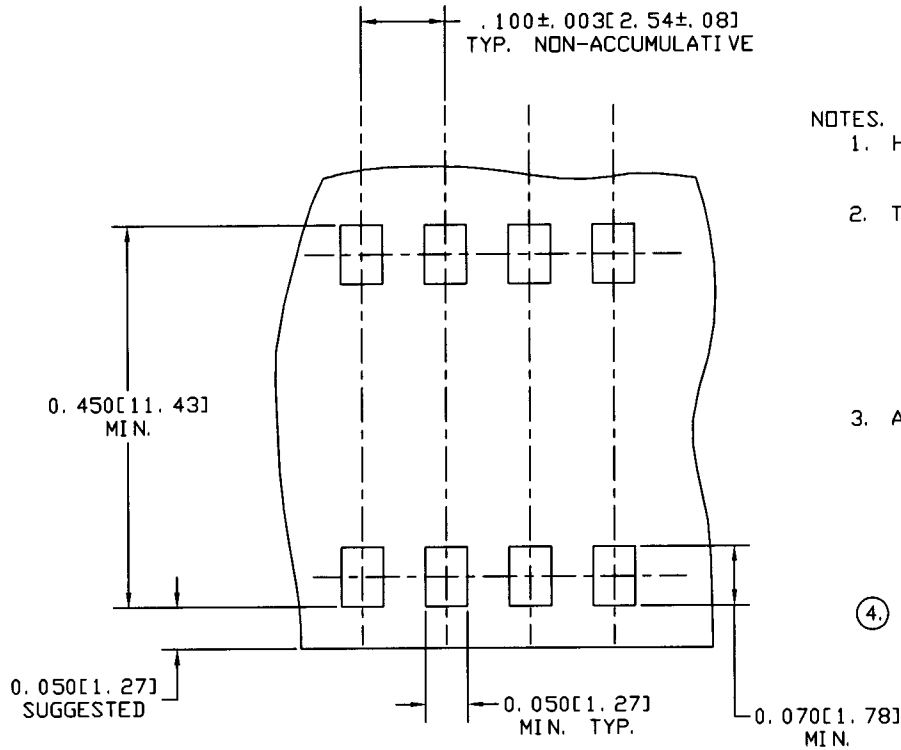


FIGURE P
SCALE 10/1

NOTES.

1. HOUSING MATERIAL.
FILLED POLYETHERIMIDE, FLAME RETARDANT PER UL 94-V0, COLOR-BLACK.
2. TERMINAL MATERIAL.
BODY, BRASS, .010/.25 THICK.
SPRING, BE-CU, HEAT TREATED
BODY PLATING.
GOLD FLASH WITH:
15 MICROINCH GOLD / .38 MICRON OVER 50 MICROINCH NICKEL OVER 1.27 MICRO IN CONTACT AREA.
SPRING PLATING, GOLD FLASH
3. APPLICATION INFORMATION.
A. RECOMMENDED SOLDER PAD PATTERN IS SHOWN IN FIG. "P".
B. ALL MATING PINS TO BE .025/.64 SQUARE ON TRUE CENTER OF GIVEN TERMINAL SPACINGS WITHIN .015/.38 DIA.
C. SUGGESTED MATING PIN LENGTH .350 ± .020 / .89 ± .51.
- ④. MARKING: MARK " BERG", PART NUMBER AND DATE CODE PARTS 2X8 OR LESS WILL HAVE THIS INFORMATION ON THE PACKAGING LABEL INSTEAD OF THE HOUSING.

mat'l. code		tolerances unless otherwise specified		CUSTOMER COPY		BERG ELECTRONICS	
ltr	ecn no	dr	date	.X ±.3		title	
G				linear	.XX ±.13	D.R. .15u" / .38u Au	
					.XXX ±.051	SMT HCC	
				angles	0° ±2'	product family CARD CONN.	
				dr	J. SHREINER 3/21/90	code	
				enfr	M.HAHN 3/21/90	size	
				chr	M.HAHN 3/21/90	dwg no	
				appd	M.HAHN 3/21/90	A4 68064	
sheet index	revision sheet					scale 10:1	
		1				sheet 2 of	
cage code						22526	

Tous droits strictement reserves. Reproduction ou communication a des tiers interdite sous quelque forme que ce soit sans autorisation écrite du propriétaire.
Propriete de ©BERG ELECTRONICS. Droits de reproduction BERG ELECTRONICS INC.

All rights strictly reserved. Reproduction or issue to third parties in any form whatever is not permitted without written authority from the proprietor.
Property of ©BERG ELECTRONICS Copyright BERG ELECTRONICS INC.



PRODUCT NUMBER	NO. OF POS.	DIM. A	DIM. B	INSULATION PLUG
68064-001	U N A S S I G N E D			
-002	2X2	. 10/2. 5	. 230/5. 04	NE
-003	2X3	. 20/5. 0	. 330/8. 38	
-004	2X4	. 30/7. 6	. 430/10. 92	
-005	2X5	. 40/10. 1	. 530/13. 46	
-006	2X6	. 50/12. 7	. 630/16. 00	
-007	2X7	. 60/15. 2	. 730/18. 54	
-008	2X8	. 70/17. 7	. 830/21. 08	
-009	2X9	. 80/20. 3	. 930/23. 62	
-010	2X10	. 90/22. 8	1. 030/26. 16	
-011	2X11	1. 00/25. 4	1. 130/28. 70	
-012	2X12	1. 10/27. 9	1. 230/31. 24	
-013	2X13	1. 20/30. 4	1. 330/33. 78	
-014	2X14	1. 30/33. 0	1. 430/36. 32	
-015	2X15	1. 40/35. 5	1. 530/38. 86	
-016	2X16	1. 50/38. 1	1. 630/41. 40	
-017	2X17	1. 60/40. 6	1. 730/43. 94	
-018	2X18	1. 70/43. 1	1. 830/46. 48	
-019	2X19	1. 80/45. 7	1. 930/49. 02	
-020	2X20	1. 90/48. 2	2. 030/51. 56	
-021	2X21	2. 00/50. 8	2. 130/54. 10	
-022	2X22	2. 10/53. 3	2. 230/56. 64	
-023	2X23	2. 20/55. 8	2. 330/59. 18	
-024	2X24	2. 30/58. 4	2. 430/61. 72	
-025	2X25	2. 40/60. 9	2. 530/64. 26	
-026	2X26	2. 50/63. 5	2. 630/66. 80	
-027	2X27	2. 60/66. 0	2. 730/69. 34	
-028	2X28	2. 70/68. 5	2. 830/71. 88	
-029	2X29	2. 80/71. 1	2. 930/74. 42	
-030	2X30	2. 90/73. 6	3. 030/76. 96	
-031	2X31	3. 00/76. 2	3. 130/79. 50	
-032	2X32	3. 10/78. 7	3. 230/82. 04	
-033	2X33	3. 20/81. 2	3. 330/84. 58	
-034	2X34	3. 30/83. 8	3. 430/87. 12	
-035	2X35	3. 40/86. 3	3. 530/89. 66	
-036	2X36	3. 50/88. 9	3. 630/92. 20	
-037	2X37	3. 60/91. 4	3. 730/94. 74	
-038	2X38	3. 70/93. 9	3. 830/97. 28	
-039	2X39	3. 80/96. 5	3. 930/99. 82	
68064-040	2X40	3. 90/99. 0	4. 030/102. 36	NO

UNASSIGNED

mat'l. code		tolerances unless otherwise specified		CUSTOMER COPY		BERG ELECTRONICS	
ltr	ecn no	dr	date	linear	.X ±.3	projection	title D.R. .15u" / .38u Au SMT HCC
G					.XX ±.13		
				angles	.XXX ±.051		
					0° ±2'	INCH/MM	product family CARD CONN.
				dr	J. SHREINER 3/21/90	scale	code
				enr	M.HAHN 3/21/90	1:1	size
				chr	M.HAHN 3/21/90	A4	dwg no
				appd	M.HAHN 3/21/90		68064
sheet index	revision sheet						sheet 3 of
	1						

Tous droits strictement reserves. Reproduction ou communication a des tiers interdite sous quelque forme que ce soit sans autorisation écrite du propriétaire.
 Propriete de ©BERG ELECTRONICS. Droits de reproduction BERG ELECTRONICS INC.

All rights strictly reserved. Reproduction or issue to third parties in any form whatever is not permitted without written authority from the proprietor.
 Property of ©BERG ELECTRONICS Copyright BERG ELECTRONICS INC.



1 | 2

3 |

4

PRODUCT NUMBER	NO. OF POS.	DIM. A	DIM. B	INSULATION PLUG
68064-041	2X41	4.00/101.6	4.130/104.90	NO
-042	2X42	4.10/104.1	4.230/107.44	
-043	2X43	4.20/106.6	4.330/109.98	
-044	2X44	4.30/109.2	4.430/112.52	
-045	2X45	4.40/111.7	4.530/115.06	
-046	2X46	4.50/114.3	4.630/117.60	
-047	2X47	4.60/116.8	4.730/120.14	
-048	2X48	4.70/119.3	4.830/122.68	
-049	2X49	4.80/121.9	4.930/125.22	
68064-050	2X50	4.90/124.4	5.030/127.76	NO

A

A

mat'l. code				tolerances unless otherwise specified			CUSTOMER COPY		BERG ELECTRONICS	
ltr	ecn no	dr	date	linear	.X ±.3		projection 	title		
G					.XX ±.13			D.R. .15u" / .38u Au		
					.XXX ±.051			SMT HCC		
				angles	0° ±2'		INCH/MM scale 1:1	product family CARD CONN.		code
				dr	J. SHREINER	3/21/90		A4	68064	sheet 4 of
				enrg	M.HAHN	3/21/90				
				chr	M.HAHN	3/21/90				
				appd	M.HAHN	3/21/90				
sheet index	revision sheet	1								

B

Tous droits strictement réservés. Reproduction ou communication a des tiers interdite sous quelque forme que ce soit sans autorisation écrite du propriétaire.
 Propriété de ©BERG ELECTRONICS. Droits de reproduction BERG ELECTRONICS INC.



All rights strictly reserved. Reproduction or issue to third parties in any form whatever is not permitted without written authority from the proprietor.
 Property of ©BERG ELECTRONICS Copyright BERG ELECTRONICS INC.

PRODUCT NUMBER	NO. OF POS.	DIM. A	DIM. B	INSULATION PLUG
68064-501	UNASSIGNED			
-502	2X2	.10/2.5	.230/5.84	YES
-503	2X3	.20/5.0	.330/8.38	
-504	2X4	.30/7.6	.430/10.92	
-505	2X5	.40/10.1	.530/13.46	
-506	2X6	.50/12.7	.630/16.00	
-507	2X7	.60/15.2	.730/18.54	
-508	2X8	.70/17.7	.830/21.08	
-509	2X9	.80/20.3	.930/23.62	
-510	2X10	.90/22.8	1.030/26.16	
-511	2X11	1.00/25.4	1.130/28.70	
-512	2X12	1.10/27.9	1.230/31.24	
-513	2X13	1.20/30.4	1.330/33.78	
-514	2X14	1.30/33.0	1.430/36.32	
-515	2X15	1.40/35.5	1.530/38.86	
-516	2X16	1.50/38.1	1.630/41.40	
-517	2X17	1.60/40.6	1.730/43.94	
-518	2X18	1.70/43.1	1.830/46.48	
-519	2X19	1.80/45.7	1.930/49.02	
-520	2X20	1.90/48.2	2.030/51.56	
-521	2X21	2.00/50.8	2.130/54.10	
-522	2X22	2.10/53.3	2.230/56.64	
-523	2X23	2.20/55.8	2.330/59.18	
-524	2X24	2.30/58.4	2.430/61.72	
-525	2X25	2.40/60.9	2.530/64.26	
-526	2X26	2.50/63.5	2.630/66.80	
-527	2X27	2.60/66.0	2.730/69.34	
-528	2X28	2.70/68.5	2.830/71.88	
-529	2X29	2.80/71.1	2.930/74.42	
-530	2X30	2.90/73.6	3.030/76.96	
-531	2X31	3.00/76.2	3.130/79.50	
-532	2X32	3.10/78.7	3.230/82.04	
-533	2X33	3.20/81.2	3.330/84.58	
-534	2X34	3.30/83.8	3.430/87.12	
-535	2X35	3.40/86.3	3.530/89.66	
-536	2X36	3.50/88.9	3.630/92.20	
-537	2X37	3.60/91.4	3.730/94.74	
-538	2X38	3.70/93.9	3.830/97.28	
-539	2X39	3.80/96.5	3.930/99.82	
68064-540	2X40	3.90/99.0	4.030/102.36	YES

mat'l. code				tolerances unless otherwise specified		CUSTOMER COPY		BERG ELECTRONICS			
ltr	ecn no	dr	date	linear	.X ±.3	projection		title			
G					.XX ±.13			D.R. 1.5u" / .38u Au		code	
					.XXX ±.051			SMT HCC		size	
				angles	0° ±2'	INCH/MM		product family			
				dr	J. SHREINER			3/21/90	CARD CONN.		code
				enr	M.HAHN			3/21/90	size		sheet
				chr	M.HAHN	3/21/90	scale		5 of		
				appd	M.HAHN	3/21/90	1:1				
sheet index	revision sheet		1				A4				
								cage code			
								22526			

Tous droits strictement reserves. Reproduction ou communication a des tiers interdite sous quelque forme que ce soit sans autorisation écrite du propriétaire. Propriete de ©BERG ELECTRONICS. Droits de reproduction BERG ELECTRONICS INC.

All rights strictly reserved. Reproduction or issue to third parties in any form whatever is not permitted without written authority from the proprietor. Property of ©BERG ELECTRONICS Copyright BERG ELECTRONICS INC.



PRODUCT NUMBER	NO. OF POS.	DIM. A	DIM. B	INSULATION PLUG
68064-541	2X41	4.00/101.6	4.130/104.90	YES
-542	2X42	4.10/104.1	4.230/107.44	
-543	2X43	4.20/106.6	4.330/109.98	
-544	2X44	4.30/109.2	4.430/112.52	
-545	2X45	4.40/111.7	4.530/115.06	
-546	2X46	4.50/114.3	4.630/117.60	
-547	2X47	4.60/116.8	4.730/120.14	
-548	2X48	4.70/119.3	4.830/122.68	
-549	2X49	4.80/121.9	4.930/125.22	
68064-550	2X50	4.90/124.4	5.030/127.76	YES

mat'l. code				tolerances unless otherwise specified			CUSTOMER COPY		BERG ELECTRONICS						
ltr	ecn no	dr	date	linear	.X ±.3		projection	title D.R. .15u" / .38u Au SMT HCC							
G					.XX ±.13										
					.XXX ±.051										
				angles	0° ±2'		INCH/MM	product family CARD CONN.		code					
				dr	J. SHREINER	3/21/90				scale 1:1	A4	68064	sheet		
				enrg	M.HAHN	3/21/90							size	dwg no	6 of
				chr	M.HAHN	3/21/90									
				appd	M.HAHN	3/21/90									
sheet index	revision sheet	1													