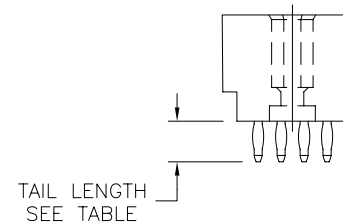
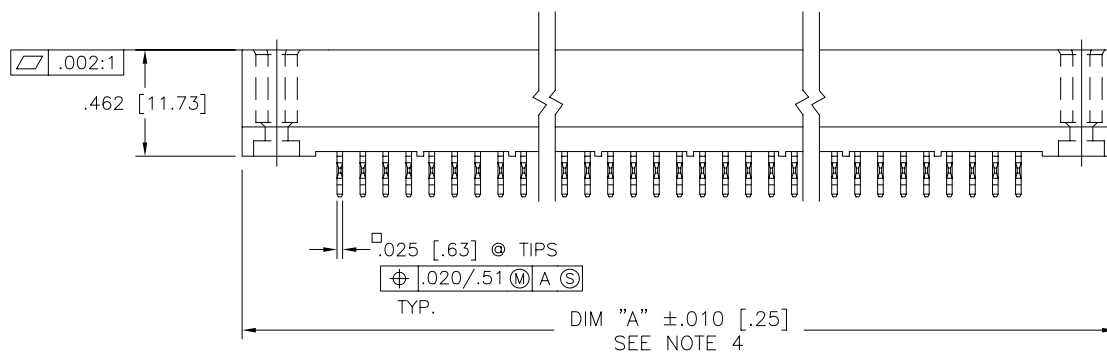
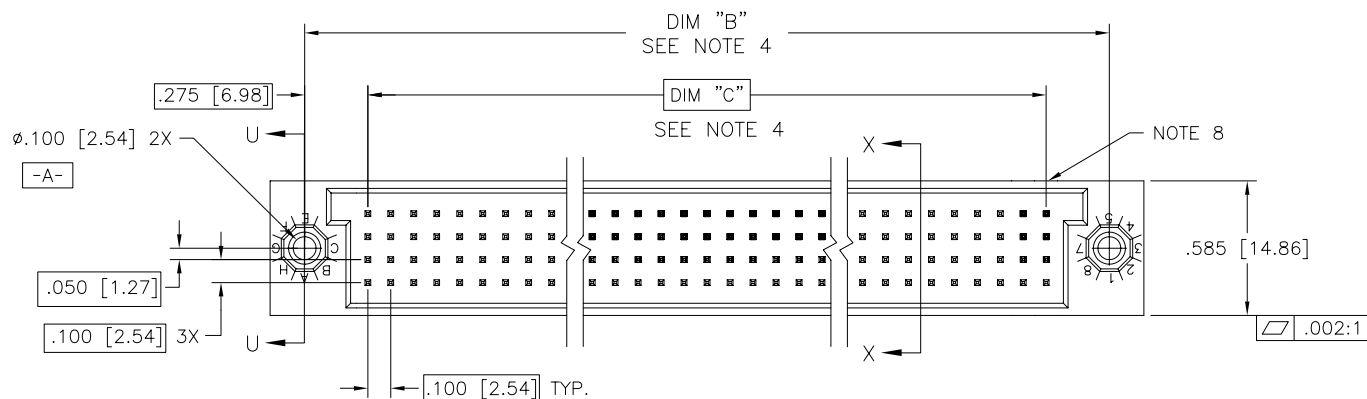


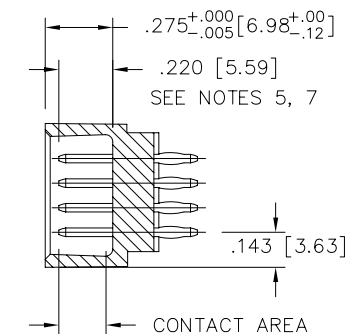
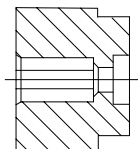
PRODUCT NUMBER
SEE TABLE AND NOTES 1 & 2 ONSHEET 3



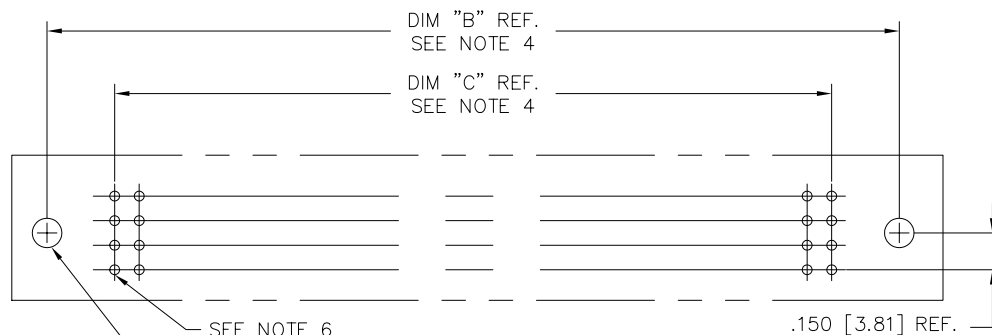
mat'l. code SEE NOTE 3				surface ISO 1302 ✓		tolerance ISO 406 ISO 1101	projection INCH/MM	product family HPC			
ltr	ecm	no	dr	date	tolerances unless otherwise specified			title			
J	V81411	DLW	8/20/98		angles	linear	.XX±.01/.3	4 ROW VERTICAL HEADER			
K	V82253	HTB	12/29/98				.XXX±.005/.13	W/PRESS-FIT PINS, 0 G.P.			
L	V00271	JWS	1/31/00		0°±2'		.XXX±.0020/.051	scale 1:1			
M	V05-0612	DCH	6/29/05	dr	D.HORCHLER	6/29/05		dwg no			
N	V05-0999	DAI	10/29/05	enr	D.HORCHLER	6/29/05		sheet 1 of 9 size			
P	M06-0283	MHT	7/27/06	chr	T.BREWBAKER	7/5/05		50009 A3			
R	M06-0447	AGS	11/07/06	app	D.HORCHLER	7/5/05		type Product Customer Drawing			
sheet	revision	R	R	R	R	R	R	R	R	R	R
index	sheet	1	2	3	4	5	6	7	8	9	

PRODUCT NO.
SEE TABLE

SECTION U-U



SECTION X-X



RECOMMENDED PCB LAYOUT
(ALL HOLES LOCATED ON .100/2.54 GRID
UNLESS OTHERWISE SPECIFIED)

mat'l. code SEE NOTE 3				surface ISO 1302 ✓		tolerance ISO 406 ISO 1101	projection 	product family HPC	
ltr	ecn	no	dr	date		tolerances unless otherwise specified		title	
R						angles	INCH/MM	4 ROW VERTICAL HEADER W/PRESS-FIT PINS, 0 G.P.	
						linear			
						0°±2'	scale 1:1	dwg no 50009	
						dr		sheet 2 of 9 size A3	
						enr			
						chr			
						appd			
sheet	revision						type	Product Customer Drawing	
index	sheet								

PRODUCT NO. NOTE 11	NUMBER OF POSITIONS	TAIL LENGTH ±.015/.38	CONTACT PLATING
50009-1YYYA	YYY	.177/4.50	30μ"/.76μ Au
50009-1YYC	YYY	.533/13.54	30μ"/.76μ Au
50009-1YYD	YYY	.733/18.62	30μ"/.76μ Au
50009-1YYYG	YYY	.250/6.35	30μ"/.76μ Au
50009-1YYYL	YYY	.188/4.78	30μ"/.76μ Au
50009-1YYYP	YYY	.470/11.94	30μ"/.76μ Au
50009-1YYR	YYY	.250/6.35	30μ"/.76μ Au
50009-3YYYA	YYY	.177/4.50	50μ"/1.27μ Au
50009-3YYC	YYY	.533/13.54	50μ"/1.27μ Au
50009-3YYD	YYY	.733/18.62	50μ"/1.27μ Au
50009-3YYYG	YYY	.250/6.35	50μ"/1.27μ Au
50009-3YYYL	YYY	.188/4.78	50μ"/1.27μ Au
50009-3YYYP	YYY	.470/11.94	50μ"/1.27μ Au
50009-3YYR	YYY	.250/6.35	50μ"/1.27μ Au
50009-5YYYA	YYY	.177/4.50	30μ"/.76μ GXT
50009-5YYC	YYY	.533/13.54	30μ"/.76μ GXT
50009-5YYD	YYY	.733/18.62	30μ"/.76μ GXT
50009-5YYYG	YYY	.250/6.35	30μ"/.76μ GXT
50009-5YYYL	YYY	.188/4.78	30μ"/.76μ GXT
50009-5YYYP	YYY	.470/11.94	30μ"/.76μ GXT
50009-5YYR	YYY	.250/6.35	30μ"/.76μ GXT
50009-XX005	100	.177/4.50	50μ"/1.27μ Au
50009-XX034	300	.533/13.54	30μ"/.76μ GXT
50009-XX067	100	.177/4.50	50μ"/1.27μ Au
50009-XX076	200	.177/4.50	30μ"/.76μ Au
50009-XX124	140	.603/15.32	50μ"/1.27μ Au
50009-XX187	400	SEE SHT 9	30μ"/.76μ Au

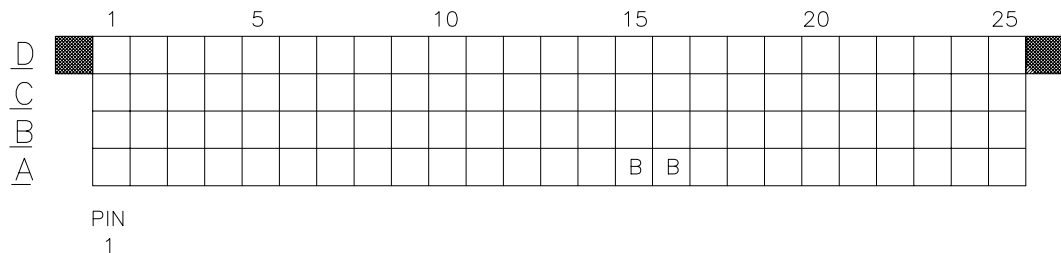
SHT 4
SHT 5
SHT 6
SHT 7
SHT 8
SHT 9

NOTES:

- ① PRODUCT NUMBERING CODE:
50009 - X YYY Z LF
LEAD FREE OPTION
TAIL LENGTH, SEE TABLE
NO. OF POSITIONS SEE NOTE 2
PLATING IN CONTACT AREA SEE TABLE
BASE NUMBER
- PRODUCT NUMBERING CODE FOR
SELECT LOAD PART NUMBERS:
50009 - XXYYY LF
LEAD FREE OPTION
SEQUENCE NUMBER
ALWAYS 'XX'
BASE NUMBER
- ② THIS PRODUCT IS CONFIGURED IN SIZES OF 6 thru 100
COLUMNS IN INCREMENTS OF ONE.
i.e.: 6,7,8,9,.....99,100.
- ③ HOUSING MATERIAL: GLASS AND MINERAL FILLED
HIGH TEMP. THERMOPLASTIC. FLAME RETARDANT PER
UL94V-0. COLOR: BLACK.
PIN MATERIAL: PHOS BRONZE
- ④ LENGTH CALCULATIONS:
DIMENSION "A" = .100/2.54 x NO. OF COLUMNS + .75/19.1
DIMENSION "B" = .100/2.54 x NO. OF COLUMNS + .450/11.43,
DIMENSION "C" = .100/2.54 x NO. OF COLUMNS - .100/2.54
- ⑤ REFERENCE 50807 FOR F.M.L.B. AVAILABLE OPTIONS. SEE SHEETS 4-9.
AND WORKSHEET.
- ⑥ Ø.0453/1.151 DRILLED HOLE PLATED WITH .0003/.007 MIN.
SnPb OVER .001/.03 to .003/.08 Cu. PLATING TO ACHIEVE
A Ø.040±.003/1.02±.08 HOLE.
- ⑦ TO ASSURE PROPER INSTALLATION: TOOLING, AS
SPECIFIED IN INSTRUCTION MANUAL 155915-001 MUST
BE USED. PIN MATING LENGTH WILL BE ±.002/.05
AFTER INSTALLATION.
- ⑧ COMPANY NAME, PART NUMBER AND LOT CODE TO APPEAR ON
THIS SURFACE PER BUS-12-108.
9. PRODUCT WITH "LF" SUFFIX MEETS EUROPEAN UNION DIRECTIVES AND
OTHER COUNTRY REGULATIONS AS DESCRIBED IN GS-22-008.
10. THIS PRODUCT IS NOT INTENDED TO BE EXPOSED TO A MANUFACTURING
SOLDER PROCESS. HOWEVER, THE HOUSING MATERIAL WILL WITHSTAND
HEAT UP TO THE 260° C.
- ⑪ ADD LF SUFFIX AT THE END OF PART NUMBER FOR LEAD FREE OPTION.

mat'l. code SEE NOTE 3		surface ISO 1302 ✓		tolerance ISO 406 ISO 1101		projection INCH/MM		product family HPC	
ltr	ecn	no	dr	date	tolerances unless otherwise specified		title		
R					angles	linear	4 ROW VERTICAL HEADER		
					0°±2'	.xxx±.005/.13 .xxxx±.0020/.051	W/PRESS-FIT PINS, 0 G.P.		
					dr	D.HORCHLER	6/29/05	dwg no	
					enr	D.HORCHLER	6/29/05	sheet 3 of 9	
					chr	T.BREWBAKER	7/5/05	size	
					app	D.HORCHLER	7/5/05	A3	
sheet		revision						type	
index		sheet						Product Customer Drawing	

		1		2		3										4				5		6	
PRODUCT NO.	ITEM KEY	SIGNAL DATA																					
		SIZE 4 x 25		TOTAL NO. OF POSITIONS -100				NO. OF POSITIONS LOADED - 100															
		PLATING			QTY.		PRESS FIT STYLE																
50009-XX005	A	SEE SHEET 3	98	.220 / 5.59				.177 / 4.50															
	B	SEE SHEET 3	2	.260 / 6.60				.177 / 4.50															
50009-XX005LF	A	SEE SHEET 3	98	.220 / 5.59				.177 / 4.50															
	B	SEE SHEET 3	2	.260 / 6.60				.177 / 4.50															



- ALL POSITIONS ARE LOADED WITH "A", EXCEPT AS SHOWN.
- COLUMN 1, ROW A IS DESIGNATED AS SIGNAL PIN 1, AS VIEWED FROM THE MATING FACE.

mat'l. code SEE NOTE 3			surface ISO 1302 ✓	tolerance ISO 406 ISO 1101	projection 	product family HPC
ltr	ecn	no dr	date	tolerances unless otherwise specified		title
R				angles	linear .XX±.01/.3	4 ROW VERTICAL HEADER W/PRESS-FIT PINS, 0 G.P.
				0°±2'	.XXX±.005/.13 .XXXX±.0020/.051	
				dr	D.HORCHLER 6/29/05	dwg no 50009
				enr	D.HORCHLER 6/29/05	
				chr	T.BREWBAKER 7/5/05	sheet4 of 9 size A3
				appd	D.HORCHLER 7/5/05	
sheet index	revision sheet					type Product Customer Drawing

PRODUCT NO.	ITEM KEY	SIGNAL DATA			
		SIZE 4 x 75	TOTAL NO. OF POSITIONS -300	NO. OF POSITIONS LOADED - 300	
		PLATING	QTY.	PRESS FIT STYLE	
				MATING LENGTH	TAIL LENGTH
50009-XX034	A	SEE SHEET 3	260	.180 / 4.57	.533 / 13.54
	B	SEE SHEET 3	40	.220 / 5.59	.533 / 13.54
50009-XX034LF	A	SEE SHEET 3	260	.180 / 4.57	.533 / 13.54
	B	SEE SHEET 3	40	.220 / 5.59	.533 / 13.54

	1	5	10	15	20	25	30	35	40
D	B	B	B						B
C	B	B	B						B
B	B	B							B
A	B	B	B						B

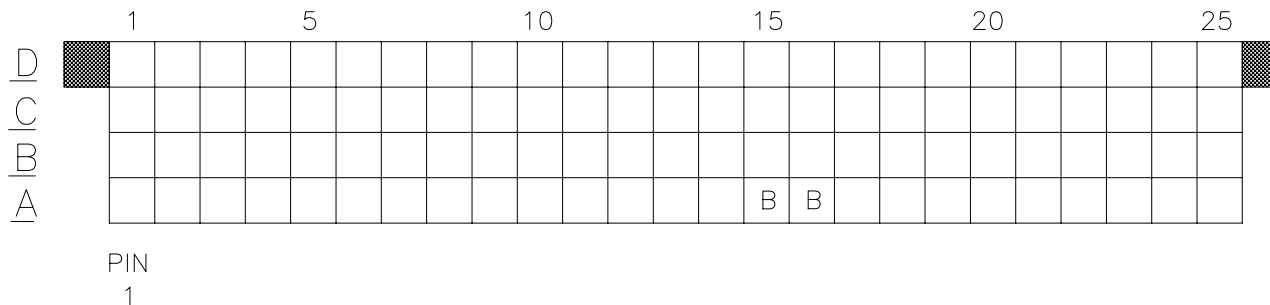
PIN
1

	41	45	50	55	60	65	70	75
B								B
B								B
B								B
B								B

- ALL POSITIONS ARE LOADED WITH "A", EXCEPT AS SHOWN.
- COLUMN 1, ROW A IS DESIGNATED AS SIGNAL PIN 1, AS VIEWED FROM THE MATING FACE.

mat'l. code SEE NOTE 3		surface ISO 1302 ✓	tolerance ISO 406 ISO 1101	projection 	product family HPC
ltr	ecn no	dr	date	tolerances unless otherwise specified	title
R				angles linear 0°±2'	4 ROW VERTICAL HEADER W/PRESS-FIT PINS, 0 G.P.
				.XX±.01/.3 .XXX±.005/.13 .XXXX±.0020/.051	INCH/MM scale 1:1
		dr	D.HORCHLER	6/29/05	
		enr	D.HORCHLER	6/29/05	
		chr	T.BREWBAKER	7/5/05	
		appd	D.HORCHLER	7/5/05	
sheet index	revision sheet				dwg no 50009 sheet 5 of 9 size A3 type Product Customer Drawing

PRODUCT NO.	ITEM KEY	SIGNAL DATA		
		SIZE 4 x 25	TOTAL NO. OF POSITIONS -100	NO. OF POSITIONS LOADED - 100
		CONTACT PLATING	QTY.	MATING LENGTH
50009-XX067	A	SEE SHEET 3	98	.200 / 5.08
	B	SEE SHEET 3	2	.240 / 6.10
50009-XX067LF	A	SEE SHEET 3	98	.200 / 5.08
	B	SEE SHEET 3	2	.240 / 6.10



1. ALL POSITIONS ARE LOADED WITH "A", EXCEPT AS SHOWN.
2. COLUMN 1, ROW A IS DESIGNATED AS SIGNAL PIN 1, AS VIEWED FROM THE MATING FACE.

mat'l. code SEE NOTE 3		surface ISO 1302 ✓	tolerance ISO 406 ISO 1101	projection INCH/MM	product family HPC
ltr	ecm no	dr	date	tolerances unless otherwise specified	title
R				angles linear 0°±2'	4 ROW VERTICAL HEADER W/PRESS-FIT PINS, 0 G.P.
				.XX±.01/.3 .XXX±.005/.13 .XXXX±.0020/.051	scale 1:1
		dr	D.HORCHLER	6/29/05	dwg no
		enr	D.HORCHLER	6/29/05	sheet 6 of 9
		chr	T.BREWBAKER	7/5/05	size
		app	D.HORCHLER	7/5/05	A3
sheet index	revision sheet				type Product Customer Drawing

1		2		3		4		5		6	
PRODUCT NO.	ITEM KEY	SIGNAL DATA									
		SIZE 4 x 50		TOTAL NO. OF POSITIONS - 200				NO. OF POSITIONS LOADED - 200			
		PIN PLATING		QTY.	MATING LENGTH		TAIL LENGTH		TOTAL PIN LENGTH		
50009-XX076	A	SEE SHEET 3		130	.230 / 5.84		.177 / 4.50		.595 / 15.11		
	B	SEE SHEET 3		68	.270 / 6.86		.177 / 4.50		.634 / 16.10		
	C	SEE SHEET 3		2	.190 / 4.83		.177 / 4.50		.555 / 14.10		
50009-XX076LF	A	SEE SHEET 3		130	.230 / 5.84		.177 / 4.50		.595 / 15.11		
	B	SEE SHEET 3		68	.270 / 6.86		.177 / 4.50		.634 / 16.10		
	C	SEE SHEET 3		2	.190 / 4.83		.177 / 4.50		.555 / 14.10		

1

5

10

15

20

25

30

35

40

45

50

D	B	C	B	B	B	B	B	B	B	B	B	B	B	B	B	B	B	B	B	B	B	C
C	B	B	B	B	B	B	B	B	B	B	B	B	B	B	B	B	B	B	B	B	B	
B	B	B	B	B	B	B	B	B	B	B	B	B	B	B	B	B	B	B	B	B	B	
A	B	B	B	B	B	B	B	B	B	B	B	B	B	B	B	B	B	B	B	B	B	

PIN

1

1.

2.

mat'l. code		surface		tolerance		projection		product family	
SEE NOTE 3		ISO 1302 ✓		ISO 406 ISO 1101				HPC	
ltr	ec	no	dr	date	tolerances unless otherwise specified				
R					angles	linear		INCH/MM	
						.XX±.01/.3			
						.XXX±.005/.13			
					0°±2°	.XXXX±.0020/.051		scale 1:1	
					dr	D.HORCHLER	6/29/05		
					enr	D.HORCHLER	6/29/05		
					chr	T.BREWBAKER	7/5/05		
					appd	D.HORCHLER	7/5/05		
sheet		revision							
index		sheet							

title		product family	
4 ROW VERTICAL HEADER		HPC	
W/PRESS-FIT PINS, 0 G.P.			
dwg no		sheet 7 of 9	
50009		A3	
type		Product Customer Drawing	

FCI

FCIconnect.com

1

23

4

5

6

PRODUCT NO.	SIGNAL DATA				
	SIZE 4 x 35	TOTAL NO. OF POSITIONS -140	NO OF POSITIONS LOADED - 140		
	ITEM KEY	PINS: PLATING:	QUANTITY	MATING LENGTH	TAIL LENGTH
50009-XX124	A	SEE SHEET 3	140	.220 / 5.59	.603 / 15.32
50009-XX124LF	A	SEE SHEET 3	140	.220 / 5.59	.603 / 15.32

A

1

5

10

15

20

25

30

35

D

C

B

A

PIN

1

1.

2.

mat'l. code

SEE NOTE 3

surface

ISO 1302 ✓

tolerance

ISO 406

ISO 1101

projection

product family

HPC

ltr

ecn

no

dr

date

tolerances unless otherwise specified

INCH/MM

scale 1:1

title

4 ROW VERTICAL HEADER

W/PRESS-FIT PINS, 0 G.P.

dwg no

50009

sheet

8

of

9

size

A3

type

Product

Customer

Drawing

sheet index

revision

sheet

1

2

3

4

5

6

form: A3

1

2

3

4

5

6



FCIconnect.com

Copyright FCI



Copyright FCI

26			30			35			40			45			50					
A			A			A			A			A	A	A	A	A	A			A
		A			A			A			A	A	A	A	A	A		C	C	C
	A			A			A			A		A	A	A	A	A	A	A	C	C
A			A			A			A	A	A	A	A	A	A	A				

- PDM: Rev:R** STATUS: **Released** Printed: May 13, 2011.