

**SPECIFICATIONS**

**Mechanical**

**Contact Retention Force:** 1.82Kg min.  
**Durability:** 500 Cycles

**Electrical**

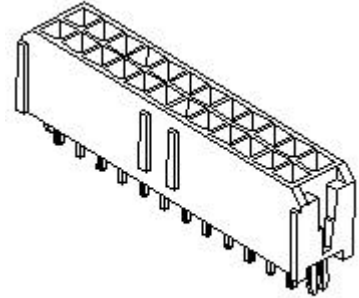
**Voltage Rating:** 600V  
**Current Rating:** 5.0A per contact min.  
**Dielectric Withstanding Voltage:** 1500V AC  
**Insulation Resistance:** 1000MW min.

**Physical**

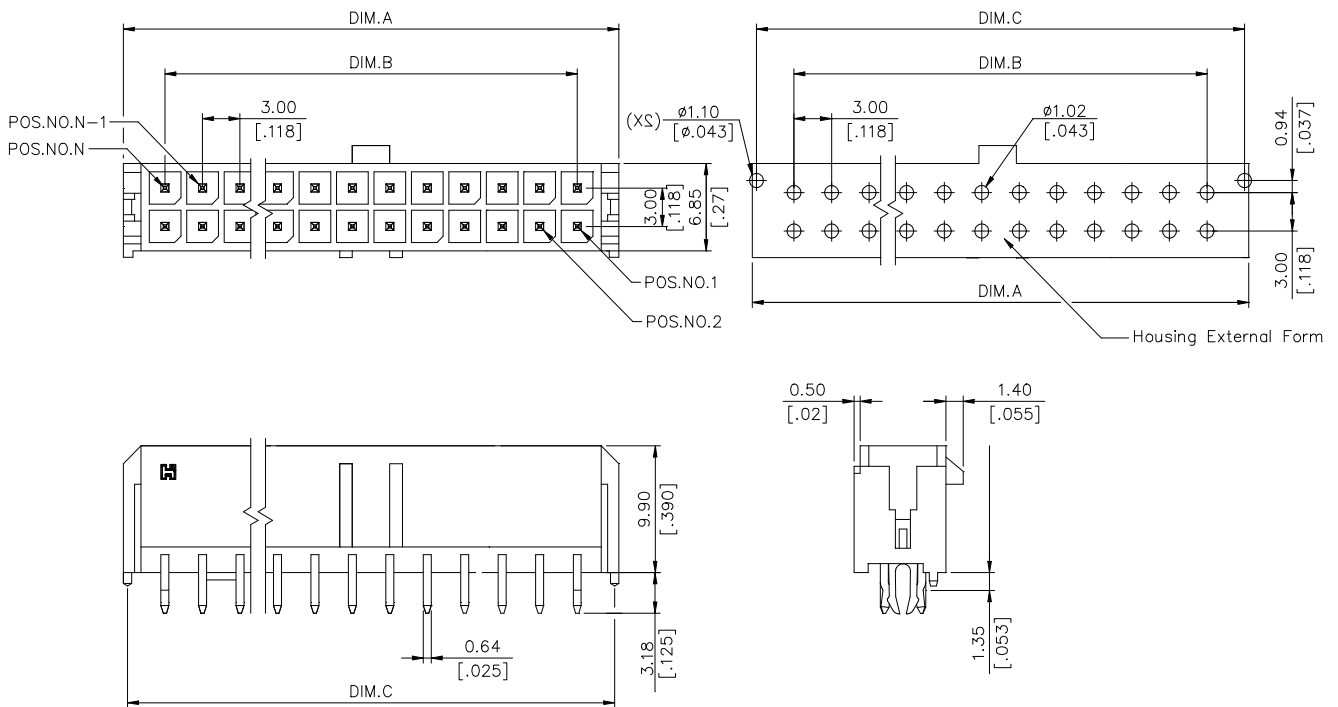
**Housing:** Thermoplastic, UL 94V-0 rated in Ivory Color  
**Contact:** Copper alloy  
**Plating:** See "ORDERING INFORMATION"  
**Operating Temperature:** -45 to +85

**Power Connector**

**HM42 Series**  
**Vertical, T/H Type**  
**3.00mm [.118"] Pitch**



**DRAWING**



**ORDERING INFORMATION**

**PRODUCT NO.:** H M 4 2 \* \* \* - \* \*

Header Series — H  
 Power Type — M  
 Termination & Contact Type — 4  
 No. Of Pos — 2  
 Optional For Plating — \* \* \*  
 Optional For Housing Color — \* \* \*  
 Optional For Kinks — \* \* \*

None:Black Color Product  
 W:Ivory Color Product  
 None:Standard Product  
 P = Plastic Post  
 B = Metal Hold Down  
 S = Solder PAD  
 K = Plastic Post And First&Last Pair Of Pin Should Be Kinked  
 D = Metal Hold Down And Terminals Are Kinked

02=4 Pos  
 03=6 Pos  
 07=14 Pos  
 06=12 Pos  
 10=20 Pos  
 12=24 Pos

0 = Tin/Lead Plating Over All  
 3 = 30u"Gold Plating  
 E = Tin With Lead Free Over All

HM4212*-**	24	39.65 [1.561]	33.00 [1.299]	39.00 [1.535]	37.30 [1.469]
HM4210*-**	20	33.65 [1.324]	27.00 [1.063]	33.00 [1.299]	31.30 [1.232]
HM4207*-**	14	24.65 [.970]	18.00 [.709]	24.00 [.945]	22.30 [.878]
HM4206*-**	12	21.65 [.852]	15.00 [.591]	21.00 [.827]	19.30 [.760]
HM4205*-**	10	18.65 [.734]	12.00 [.472]	18.00 [.709]	16.30 [.642]
HM4204*-**	8	15.65 [.616]	9.00 [.354]	15.00 [.590]	13.30 [.524]
HM4203*-**	6	12.65 [.498]	6.00 [.236]	12.00 [.472]	10.30 [.406]
HM4202*-**	4	9.65 [.380]	3.00 [.118]	9.00 [.354]	7.30 [.287]
P/N	POS.	DIM. A	DIM. B	DIM. C	DIM. D