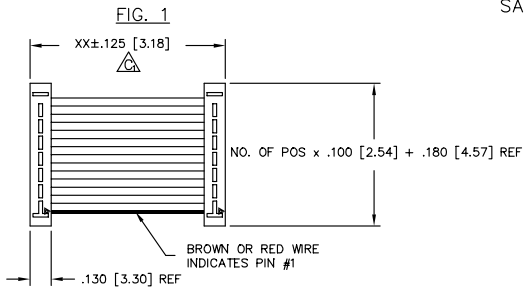
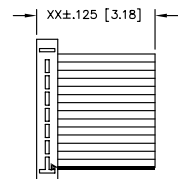


-D (DOUBLE END)



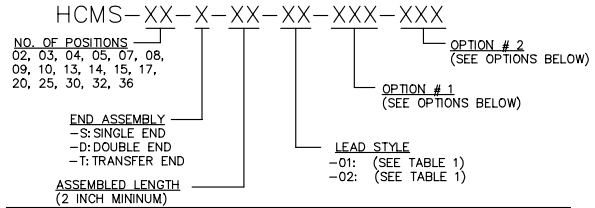
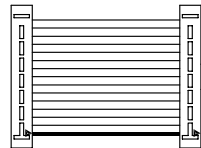
-S (SINGLE END)

SAME AS FIG. 1 UNLESS OTHERWISE SHOWN



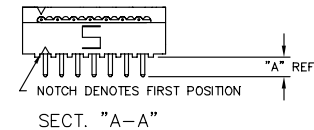
-T (TRANSFER END)

SEE NOTE 2
 SAME AS FIG. 1 UNLESS OTHERWISE SHOWN



LEAD STYLE	"A"	1	2	3 (-T END ONLY)
-01	.120 [3.05]	HCMS-XX-01-X	CB-XX-28-7/36-100-C	HCSS-XX-01-X
-02	.230 [5.84]	HCMS-XX-02-X	CB-XX-28-7/36-100-C	HCSS-XX-01-X

SPECIFY NO. OF POS. IN PART CALLOUT -XX



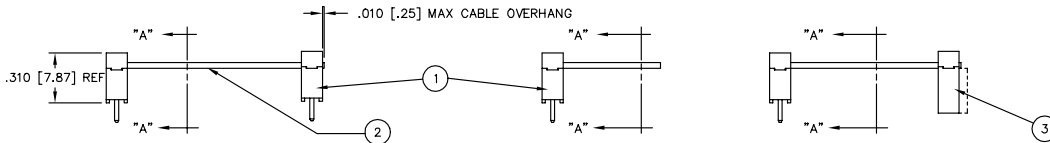
- NOTES:
- IF OPTION IS SPECIFIED WITH -T END ASSEMBLY, SUB-ASSEMBLIES B & C WILL BE HCSS-XX-01-X.
 - HIDDEN LINES ARE USED TO SHOW POLARIZATION WHEN USING -T OPTION.
 - Δ REPRESENTS CRITICAL DIMENSION FOR STATISTICAL PROCESS CONTROL.
 - ALL ASSEMBLIES TO BE 100% ELECTRICALLY TESTED FOR SHORTS AND OPENS.
 - ALL ASSEMBLIES TO BE 100% HI-POT TESTED AT 1000V.

PLATING

-T = .000150 BRIGHT ACID TIN ON ENTIRE CONTACT. (USED ONLY WITH FEMALE STRIP OF A -T END OPTION - USE HCSS-XX-01-TX.)
 -S = .00010 Au. ON TAIL AREA WITH THE BALANCE OF .000150 BRIGHT ACID TIN - USE HCMS-XX-XX-S. (NOT TO BE USED WITH FEMALE STRIP OF A -T END OPTION.)

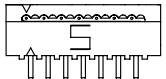
(STANDARD PLATING IS .000150 BRIGHT ACID TIN OVER ENTIRE TERMINAL - USE HCMS-XX-XX-T. FOR A -T OPTION, STANDARD PLATING FOR THE FEMALE END IS .000150 BRIGHT ACID TIN, EXCEPT CONTACT AREA IS .00010 Au. - USE HCSS-XX-01-SX.)

NOTE:
 SUB-ASSEMBLY 1 OR 3 TO BE PRESSED TOGETHER WITH NO GAPS BETWEEN CABLE & BODIES.

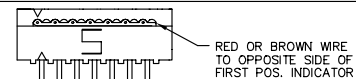


-G GRAY CABLE

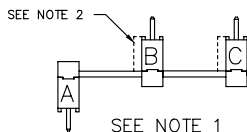
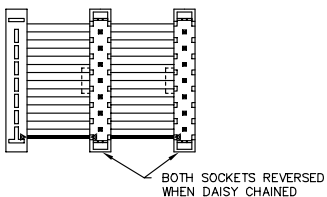
SUBSTITUTE GRAY CABLE FOR STANDARD COLOR CODED CABLE
 USE: CB-XX-28-7/36-100-G



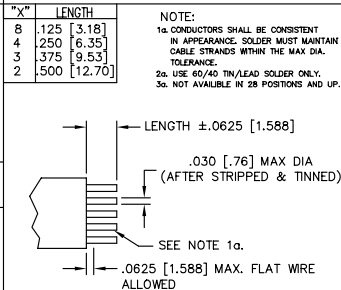
-RW REVERSE WIRING



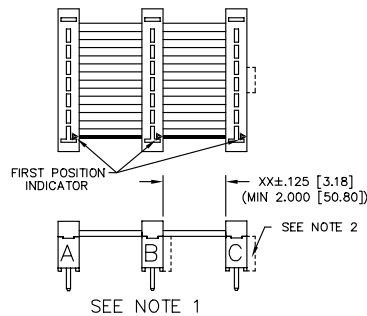
-R REVERSED CONNECTOR



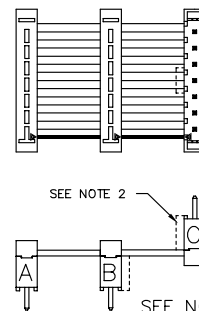
-ST"X" STRIPPED & TINNED



-SXX DAISY CHAIN- SINGLE

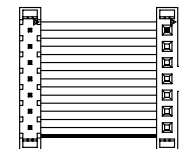


-O OUTSIDE REVERSED



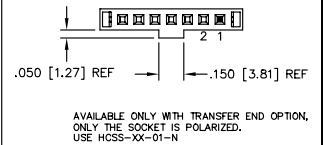
-PXX

XX = POSITION NO.
 INSERT POLARIZING KEY PART NO. PK-06 INTO SPECIFIED POSITION -XX

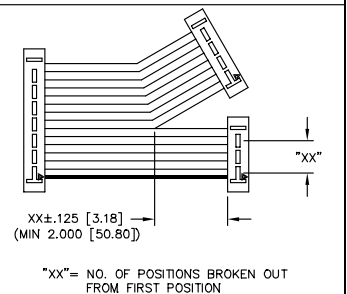


NOTE:
 OPTION ONLY AVAILABLE ON FEMALE END OF THE -T (TRANSFER END) OPTION
 THE POLARIZED POSITION WILL HAVE THE SAME ELECTRICAL POSITION FROM THE BROWN WIRE FIRST POSITION INDICATOR.

-N NOTCH POLARIZATION



-BXX BREAKOUT OPTION



PROPRIETARY NOTE
 THIS DOCUMENT CONTAINS INFORMATION CONFIDENTIAL AND PROPRIETARY TO SAMTEC INC. AND SHALL NOT BE REPRODUCED OR TRANSMITTED IN ANY FORM OR BY ANY MEANS, ELECTRONIC OR MECHANICAL, INCLUDING PHOTOCOPYING, RECORDING, OR BY ANY INFORMATION STORAGE AND RETRIEVAL SYSTEM, WITHOUT THE EXPRESS WRITTEN CONSENT OF SAMTEC INC.