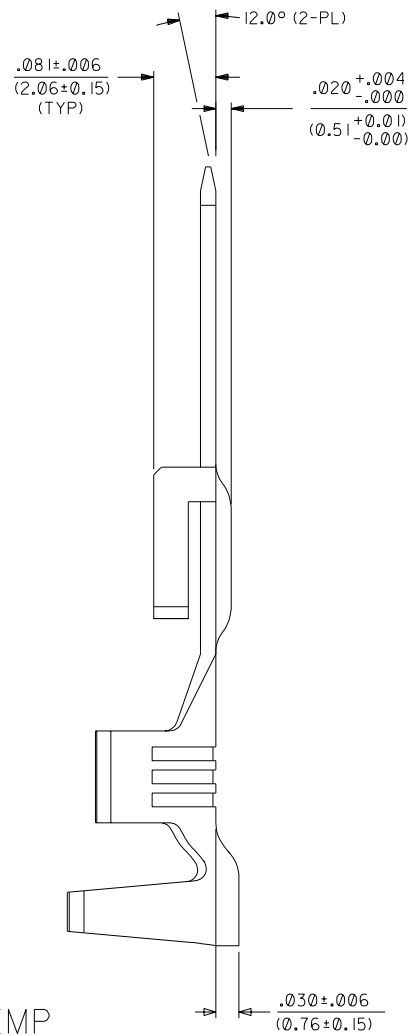
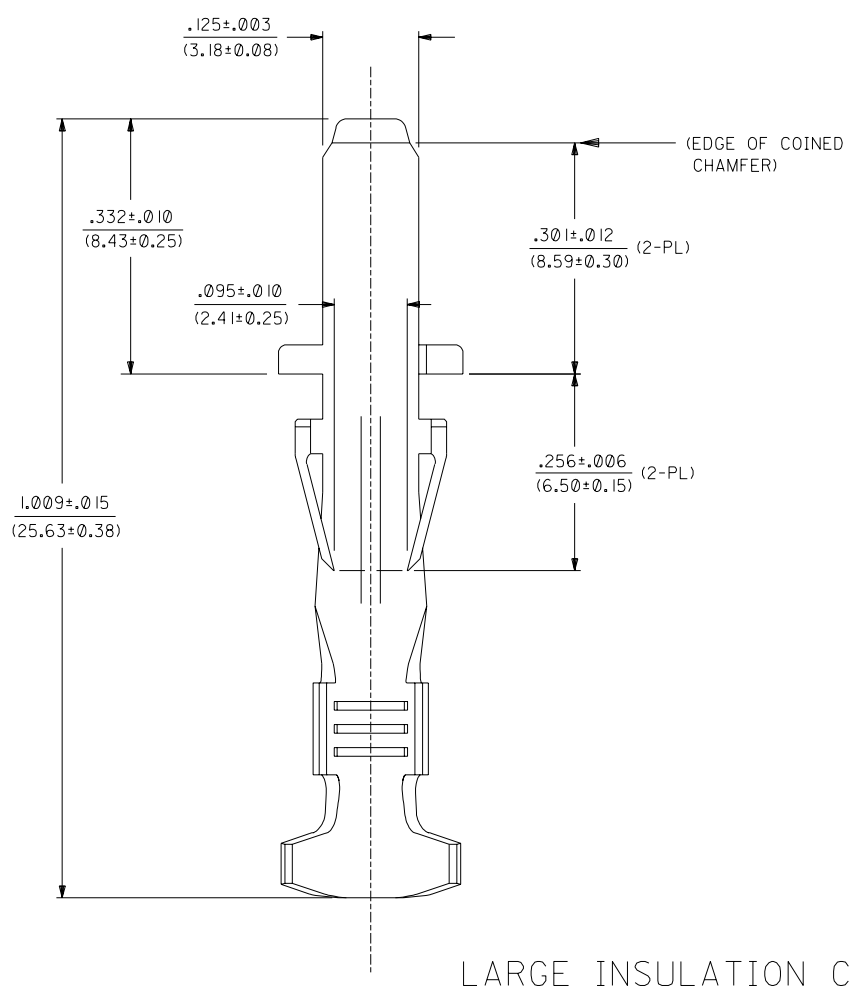
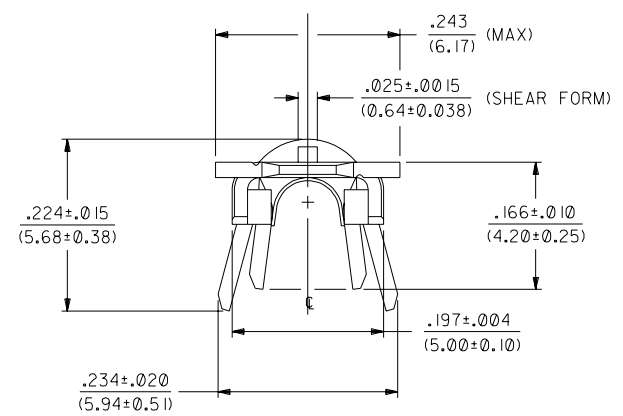


MATERIAL NUMBER	FINISH
43178-6001	999
43178-6002	H901
43178-6003	F542

NOTES

1. MATERIAL: BRASS
2. FINISH:
999 - UNPLATED
H901 - 20 MICROINCH MIN. HOT TIN DIP
F542 - 15 MICROINCH MIN. SELECT GOLD IN CONTACT AREA,
50 MICROINCH TIN-LEAD IN CRIMP AREA,
NICKEL UNDERPLATE OVERALL.
3. PRODUCT SPECIFICATION : PSX-44441-9999.
4. TERMINAL FOR USE WITH 14-18 AWG, UL 1015 TYPE WIRE.
MAXIMUM INSULATION DIAMETER: .180/(4.57)
5. TERMINAL MEETS SPACING REQUIREMENTS OF UL1950 WHEN
USED WITH 43680 SABRE SERIES PLUG HOUSINGS.



LARGE INSULATION CRIMP

DIMENSIONS SHOWN (METRIC) INCH UNLESS OTHERWISE SPECIFIED TOLERANCES: ANGULAR ± 1/2°		▽ = 0	▼ = 0	REVISE ONLY ON CAD SYSTEM																								
<table border="1"> <thead> <tr> <th></th> <th>INCH</th> <th>METRIC</th> </tr> </thead> <tbody> <tr> <td>3 PLACE</td> <td>± ---</td> <td>---</td> </tr> <tr> <td>2 PLACE</td> <td>± ---</td> <td>± ---</td> </tr> <tr> <td>1 PLACE</td> <td>---</td> <td>± ---</td> </tr> </tbody> </table>			INCH	METRIC	3 PLACE	± ---	---	2 PLACE	± ---	± ---	1 PLACE	---	± ---	<table border="1"> <tr> <td colspan="2">MFG.</td> <td>SH.</td> <td>REV.</td> <td>LTR.</td> <td>REVISIONS</td> </tr> <tr> <td colspan="2">A</td> <td></td> <td></td> <td></td> <td>RELEASE PER UCR 2002-1132 6/27/02 BW</td> </tr> </table>			MFG.		SH.	REV.	LTR.	REVISIONS	A					RELEASE PER UCR 2002-1132 6/27/02 BW
	INCH	METRIC																										
3 PLACE	± ---	---																										
2 PLACE	± ---	± ---																										
1 PLACE	---	± ---																										
MFG.		SH.	REV.	LTR.	REVISIONS																							
A					RELEASE PER UCR 2002-1132 6/27/02 BW																							
<table border="1"> <tr> <td>DRWG. BY: BW</td> <td>CHK'D. BY: BW</td> </tr> <tr> <td>APP'D. BY: SF</td> <td>SCALE: 8:1</td> </tr> </table>		DRWG. BY: BW	CHK'D. BY: BW	APP'D. BY: SF	SCALE: 8:1	<table border="1"> <tr> <td>FILE NAME: ET43178XG</td> <td>SHEET NO.: 1 OF 1</td> <td>DATE: 6/27/02</td> </tr> <tr> <td colspan="2">SEE CHART</td> <td>SD-43178-6***</td> </tr> </table>		FILE NAME: ET43178XG	SHEET NO.: 1 OF 1	DATE: 6/27/02	SEE CHART		SD-43178-6***	<table border="1"> <tr> <td colspan="2">TITLE: CRIMP MALE TAB, UL1950 .125/(3.18) X .020/(0.51); 14-18AWG; SABRE</td> </tr> <tr> <td colspan="2">PART NO. MOLEX INCORPORATED U.S.A. 60532</td> </tr> <tr> <td colspan="2">DRWG. NO. SD-43178-6***</td> </tr> </table>	TITLE: CRIMP MALE TAB, UL1950 .125/(3.18) X .020/(0.51); 14-18AWG; SABRE		PART NO. MOLEX INCORPORATED U.S.A. 60532		DRWG. NO. SD-43178-6***									
DRWG. BY: BW	CHK'D. BY: BW																											
APP'D. BY: SF	SCALE: 8:1																											
FILE NAME: ET43178XG	SHEET NO.: 1 OF 1	DATE: 6/27/02																										
SEE CHART		SD-43178-6***																										
TITLE: CRIMP MALE TAB, UL1950 .125/(3.18) X .020/(0.51); 14-18AWG; SABRE																												
PART NO. MOLEX INCORPORATED U.S.A. 60532																												
DRWG. NO. SD-43178-6***																												
DRAFT WHERE APPLICABLE MUST REMAIN WITHIN DIMENSIONS		THIS DRAWING CONTAINS INFORMATION THAT IS PROPRIETARY TO MOLEX INC. AND SHOULD NOT BE USED WITHOUT WRITTEN PERMISSION.																										