

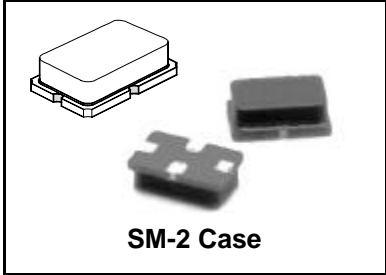


- **Ideal for European 868.95 MHz Transmitters**
- **Very Low Series Resistance**
- **Quartz Stability**
- **Surface-Mount Ceramic Case with 21 mm² Footprint**
- **Complies with Directive 2002/95/EC (RoHS)**

The RO2156A is a true one-port, surface-acoustic-wave (SAW) resonator in a surface-mount ceramic case. It provides reliable, fundamental-mode, quartz frequency stabilization of fixed-frequency transmitters operating at 868.95 MHz. This SAW is designed specifically for remote-control and wireless security transmitters operating under ETSI-ETS 300 220 in Europe and under FTZ 17 TR 2100 in Germany.

**RO2156A
RO2156A-1
RO2156A-2**

**868.95 MHz
SAW
Resonator**



Absolute Maximum Ratings

Rating	Value	Units
CW RF Power Dissipation	+5	dBm
DC Voltage Between Terminals	±30	VDC
Case Temperature	-40 to +85	°C
Soldering Temperature (10 seconds / 5 cycles max.)	260	°C

Electrical Characteristics

Characteristic	Sym	Notes	Minimum	Typical	Maximum	Units	
Frequency at +25°C Nominal Frequency RO2156A	f _C	2,3,4,5	868.875		869.025	MHz	
RO2156A-1			868.875		869.175		
RO2156A-2			868.850		869.050		
Tolerance from 868.95 MHz RO2156A	Δf _C				±75	kHz	
RO2156A-1			-75		+225		
RO2156A-2					±100		
Insertion Loss	IL	2,5,6		1.1	2.0	dB	
Quality Factor	Unloaded Q	5,6,7		38,997			
	50 Ω Loaded Q			4,000			
Temperature Stability	Turnover Temperature	6,7,8	10	25	40	°C	
	Turnover Frequency		f _O		f _C		kHz
	Frequency Temperature Coefficient		FTC		0.032		ppm/°C ²
Frequency Aging	Absolute Value during the First Year	fA	1	<±10		ppm/yr	
DC Insulation Resistance between Any Two Terminals		5	1.0			MΩ	
RF Equivalent RLC Model	Motional Resistance	R _M		11.4295		Ω	
	Motional Inductance	L _M	5, 6, 7, 9	81.637		μH	
	Motional Capacitance	C _M		0.41		fF	
	Shunt Static Capacitance	C _O	5, 6, 7, 9	2.9		pF	
Test Fixture Shunt Inductance	L _{TEST}	2, 7		11.5679		nH	
Lid Symbolization (in Addition to Lot and/ or Date Code)				197			



CAUTION: Electrostatic Sensitive Device. Observe precautions for handling.

Notes:

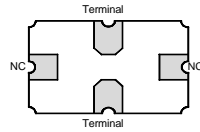
1. Lifetime (10 year) frequency aging.
2. The center frequency, f_C, is measured at the minimum insertion loss point, IL_{MIN}, with the resonator in the 50 Ω test system (VSWR ≤ 1.2:1). The shunt inductance, L_{TEST}, is tuned for parallel resonance with C_O at f_C.
3. One or more of the following United States patents apply: 4,454,488 and 4,616,197.
4. Typically, equipment utilizing this device requires emissions testing and government approval, which is the responsibility of the equipment manufacturer.
5. Unless noted otherwise, case temperature T_C = +25°C±2°C for all specifications.
6. The design, manufacturing process, and specifications of this device are subject to change without notice.
7. Derived mathematically from one or more of the following directly measured parameters: f_C, IL, 3 dB bandwidth, f_C versus T_C, and C_O.
8. Turnover temperature, T_O, is the temperature of maximum (or turnover) frequency, f_O. The nominal frequency at any case temperature, T_C, may be calculated from: f = f_O [1 - FTC (T_O - T_C)²].
9. This equivalent RLC model approximates resonator performance near the resonant frequency and is provided for reference only. The capacitance C_O is the static (nonmotional) capacitance between the two terminals measured at low frequency (10 MHz) with a capacitance meter. The measurement includes parasitic capacitance with "NC" pads unconnected. Case parasitic capacitance is approximately 0.05pF. Transducer parallel capacitance can be calculated as: C_P = C_O - 0.05 pF.

868.95 MHz

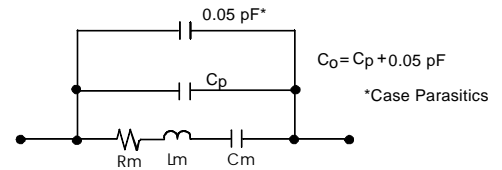
SAW Resonator

Electrical Connections

The SAW resonator is bidirectional and may be installed with either orientation. The two terminals are interchangeable and unnumbered. The callout NC indicates no internal connection. The NC pads assist with mechanical positioning and stability. External grounding of the NC pads is recommended to help reduce parasitic capacitance in the circuit.

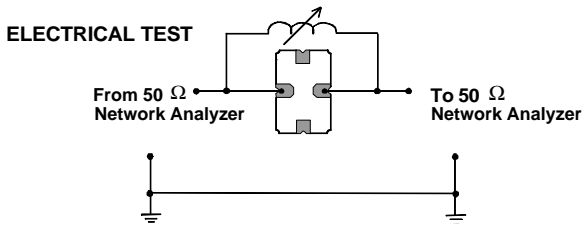


Equivalent LC Model

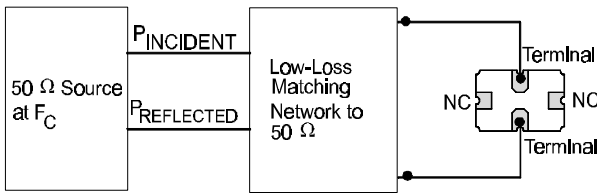


Typical Test Circuit

The test circuit inductor, L_{TEST} , is tuned to resonate with the static capacitance, C_O , at F_C .



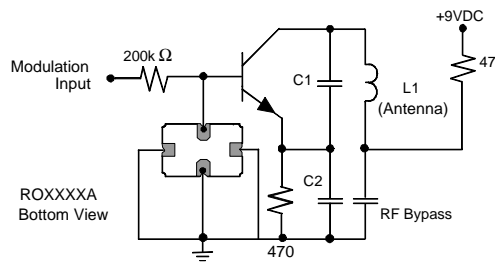
POWER TEST



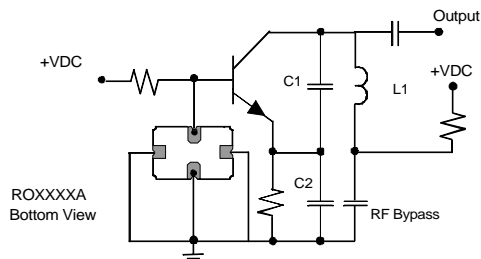
CW RF Power Dissipation = $P_{INCIDENT} - P_{REFLECTED}$

Typical Application Circuits

Typical Low-Power Transmitter Application

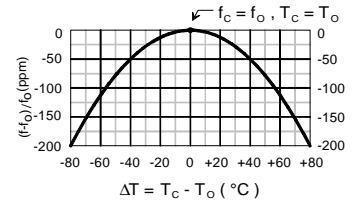


Typical Local Oscillator Application



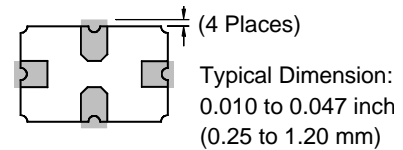
Temperature Characteristics

The curve shown on the right accounts for resonator contribution only and does not include LC component temperature contributions.



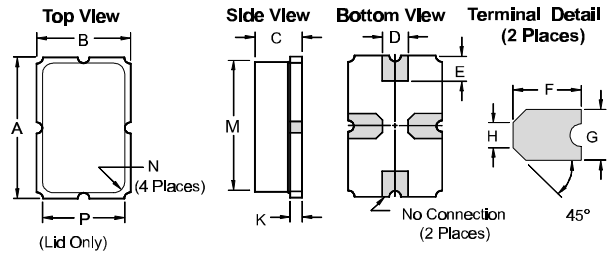
Typical Circuit Board Land Pattern

The circuit board land pattern shown below is one possible design. The optimum land pattern is dependent on the circuit board assembly process which varies by manufacturer. The distance between adjacent land edges should be at a maximum to minimize parasitic capacitance. Trace lengths from terminal lands to other components should be short and wide to minimize parasitic series inductances.



Case Design

The case material is black alumina with contrasting symbolization. All pads are nominally centered with respect to the base and consist of 40 to 70 microinches electroless gold on 60-350 microrinches electroless nickel.



Dimensions	Millimeters		Inches	
	Min	Max	Min	Max
A	5.74	5.99	0.226	0.236
B	3.73	3.99	0.147	0.157
C	1.91	2.16	0.075	0.085
D	0.94	1.10	0.037	0.043
E	0.83	1.20	0.033	0.047
F	1.16	1.53	0.046	0.060
G	0.94	1.10	0.037	0.043
H	0.43	0.59	0.017	0.023
K	0.43	0.59	0.017	0.023
M	5.08	5.33	0.200	0.210
N	0.38	0.64	0.015	0.025
P	3.05	3.30	0.120	0.130