

SPECIFICATIONS

DDR Connector

Mechanical

Contact Retention Force: 0.75Lbs (0.34kgf) min. per Contact

Durability: 25 Cycles

Dram Board Insertion Force: 3 oz max. per Contact

Electrical

Voltage Raging: 250V AC

Current Rating: 1.0A max., 30 max., in Temperature Rise

Insulation Resistance: 1000MW min. initial

Dielectric Withstanding Voltage: 500V AC at Sea Level

Low Level Contact Resistance: 30mW max. initial

Physical

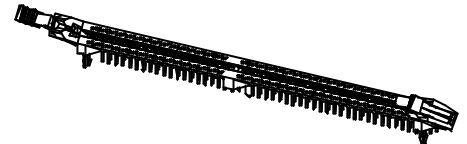
Housing: Thermoplastic, UL 94V-0 rated in Black Color

Contact: Copper alloy

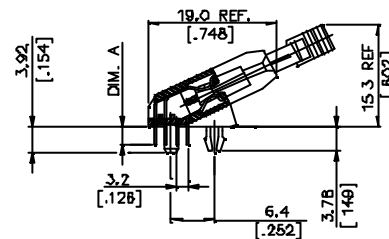
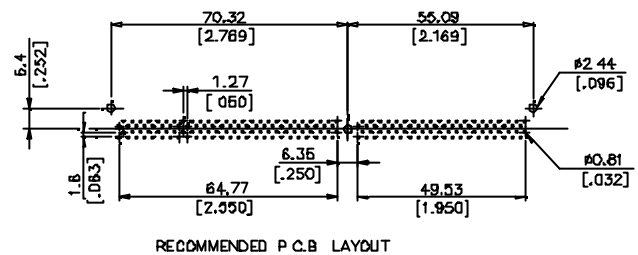
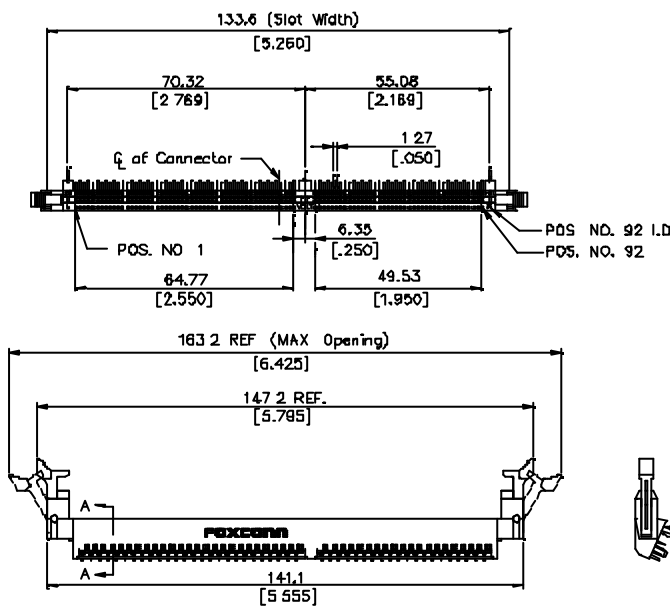
Ejector: Thermoplastic, UL 94V-0 rated in Ivory or Natural Color

Metal Hold Down: Copper alloy

Operating Temperature: -55 to +105



DRAWING



ORDERING INFORMATION

PRODUCT NO.: AU192** - A1

Memory Socket with Contact Pitch of .050" ———— Extension Code

25 Degree Type ———— Contact Area Plating

No. of Pos. 92=184 Pos. ————

Tail Length ————

0=3.15 [.124]
1=2.67 [.105]

1=Gold Flash
2=20u" Gold
3=30u" Gold
6=10u" Gold
7=15u" Gold
F=Gold Flash (Lead Free)
J=10u" Gold (Lead Free)
V=15u" Gold (Lead Free)
X=20u" Gold (Lead Free)
H=30u" Gold (Lead Free)

AU1920*-A1	184	2 5V	3.15 [.124]
AU1921*-A1		2 5V	2.67 [.105]
P/N	PDS	VOLTAGE MARKING	DM A