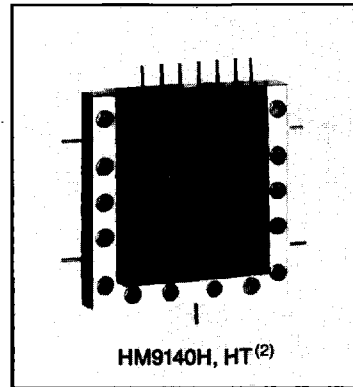
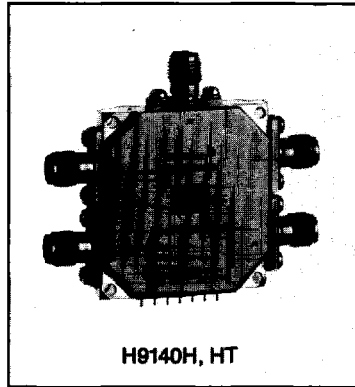


Models H9140H, HM9140H⁽²⁾, H9140HT, HM9140HT⁽²⁾ Hermetically Sealed SP4T Switches



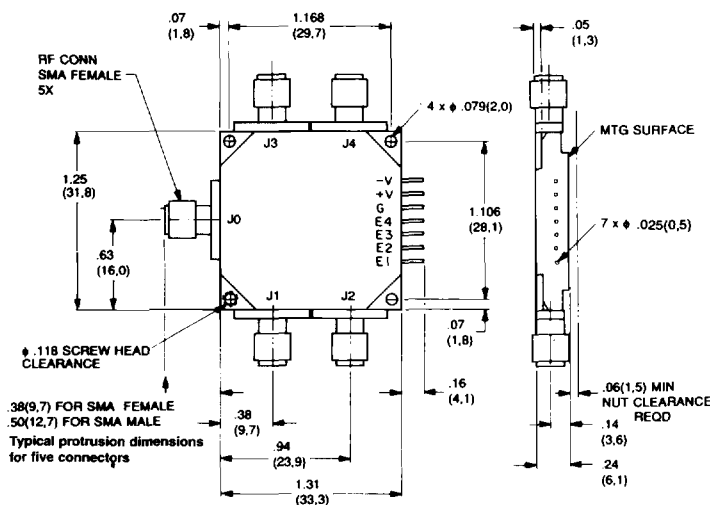
PERFORMANCE CHARACTERISTICS⁽¹⁾

MODEL NO.	CHARACTERISTIC	FREQUENCY (GHz)			
		1-4	4-8	8-12.4	12.4-18
H9140H HM9140H⁽²⁾	Min Isolation (dB)	60	60	60	50
	Max Insertion Loss (dB)	1.4	1.5	2.0	2.8
	Max VSWR: (On position)	1.75	1.75	1.75	2.0
H9140HT HM9140HT⁽²⁾ (NONREFLECTIVE)	Min Isolation (dB)	60	60	60	50
	Max Insertion Loss (dB)	1.6	1.8	2.5	3.3
	Max VSWR: Port ON	1.75	1.9	2.0	2.0
	Max VSWR: Port OFF	1.75	2.0	2.2	2.3

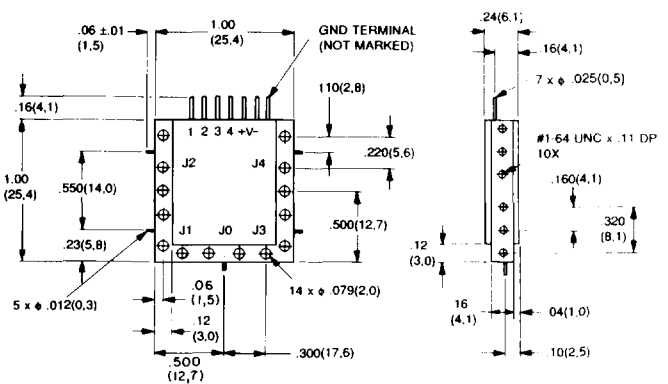
(1) For Switching Speed, Power Handling and other specifications, see page 154.

(2) HM Switches are special order products; consult factory before ordering.

DIMENSIONS AND WEIGHTS



Model H9140H, HT
Wt. 1.5 oz. (43gm) approx.



Model HM9140H, HT⁽²⁾
Wt. 0.65 oz. (18gm) approx.

Dimensional Tolerances, unless otherwise indicated: .xx \pm .02; .xxx \pm .005

