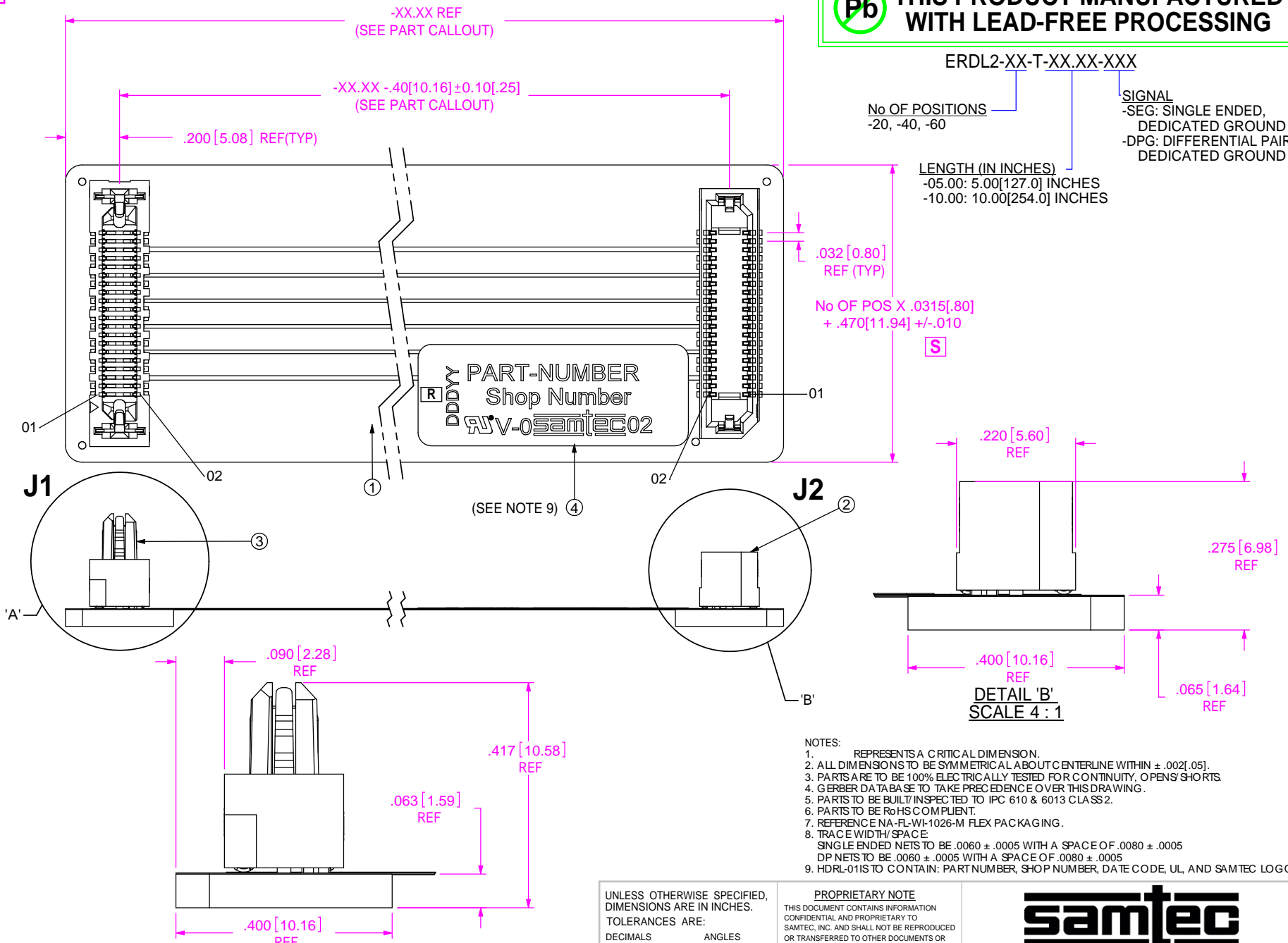


Pb THIS PRODUCT MANUFACTURED WITH LEAD-FREE PROCESSING



DO NOT SCALE FROM THIS PRINT

- NOTES:
1. REPRESENTS A CRITICAL DIMENSION.
 2. ALL DIMENSIONS TO BE SYMMETRICAL ABOUT CENTERLINE WITHIN $\pm .002 [0.05]$.
 3. PARTS ARE TO BE 100% ELECTRICALLY TESTED FOR CONTINUITY, OPENS/SHORTS.
 4. GERBER DATABASE TO TAKE PRECEDENCE OVER THIS DRAWING.
 5. PARTS TO BE BUILT/INSPECTED TO IPC 610 & 6013 CLASS 2.
 6. PARTS TO BE RoHS COMPLIANT.
 7. REFERENCE NA-FL-WI-1026-M FLEX PACKAGING.
 8. TRACE WIDTH/SPACE: SINGLE ENDED NETS TO BE $.0060 \pm .0005$ WITH A SPACE OF $.0080 \pm .0005$; DP NETS TO BE $.0060 \pm .0005$ WITH A SPACE OF $.0080 \pm .0005$.
 9. HDRL-01S TO CONTAIN: PART NUMBER, SHOP NUMBER, DATE CODE, UL, AND SAMTEC LOGO.

UNLESS OTHERWISE SPECIFIED, DIMENSIONS ARE IN INCHES.

TOLERANCES ARE:

DECIMALS	ANGLES
.XX: $\pm .01 [3]$	2°
.XXX: $\pm .005 [13]$	
.XXXX: $\pm .0020 [051]$	

PROPRIETARY NOTE

THIS DOCUMENT CONTAINS INFORMATION CONFIDENTIAL AND PROPRIETARY TO SAMTEC, INC. AND SHALL NOT BE REPRODUCED OR TRANSFERRED TO OTHER DOCUMENTS OR DISCLOSED TO OTHERS OR USED FOR ANY PURPOSE OTHER THAN THAT WHICH IT WAS OBTAINED WITHOUT THE EXPRESSED WRITTEN CONSENT OF SAMTEC, INC.

samtec

520 PARK EAST BLVD, NEW ALBANY, IN 47150
 PHONE 812-944-6733 FAX: 812-948-5047
 e-Mail info@SAMTEC.com code 55322

ITEM NO.	PART NUMBER	DESCRIPTION	QUANTITY	MATERIAL
1	SUB-ERDL2-XX-T-XX.XX-XXX	FLEX SUB ASSEMBLY	1	SUB-ASSEMBLY
2	ERF8-XXX-05.0-L-DV-L	CONNECTOR	1	SUB-ASSEMBLY
3	ERM8-XXX-05.0-L-DV-L	CONNECTOR	1	SUB-ASSEMBLY
4	HDRL-01	LABEL	1	POLYESTER

MATERIAL: DO NOT SCALE DRAWING SHEET SCALE 1:1

INSULATOR: VECTRA E130i, COLOR: BLACK CONTACT OR TERMINAL:

MAX FLASH ALLOWED: $.002 [05]$
 MAX GATE VESTIGE: $.002 [05]$

c:\enterprise\aut\DWG\MISC\MKTG\ERDL2-XX-T-XX.XX-XXX-MKT.SLDDRW

DESCRIPTION: ERx8 FLEX CIRCUIT

DWG. NO. ERDL2-XX-T-XX.XX-XXX

BY: A.OWENS 03/12/08 SHEET 1 OF 2

ERDL2-20-SEG			ERDL2-20-DPG			
*Ground is common			*Ground is common			
J1 Pin	Signal	J2 Pin	J1 Pin	Signal	J2 Pin	DP Pair
1	G	1	1	S	1	Pair
2	S	2	3	S	3	
3	S	3	5	G	5	Pair
4	G	4	2	S	2	
5	G	5	4	S	4	Pair
6	S	6	6	G	6	
7	S	7	7	S	7	Pair
8	G	8	9	S	9	
9	G	9	11	G	11	Pair
10	S	10	8	S	8	
11	S	11	10	S	10	Pair
12	G	12	12	G	12	
13	G	13	13	S	13	Pair
14	S	14	15	S	15	
15	S	15	17	G	17	Pair
16	G	16	14	S	14	
17	G	17	16	S	16	Pair
18	S	18	18	G	18	
19	S	19	19	S	19	Pair
20	G	20	21	S	21	
21	G	21	23	G	23	Pair
22	S	22	20	S	20	
23	S	23	22	S	22	Pair
24	G	24	24	G	24	
25	G	25	25	S	25	Pair
26	S	26	27	S	27	
27	S	27	29	G	29	Pair
28	G	28	26	S	26	
29	G	29	28	S	28	Pair
30	S	30	30	G	30	
31	S	31	31	S	31	Pair
32	G	32	33	S	33	
33	G	33	35	G	35	Pair
34	S	34	32	S	32	
35	S	35	34	S	34	Pair
36	G	36	36	G	36	
37	G	37	37	S	37	No connect
38	S	38	39	S	39	
39	S	39	38	S	38	Pair
40	G	40	40	S	40	

TABLE 1

FLEX PART #	A ASSEMBLY PART NUMBER
10659	ERDL2-20-T-05.00-DPG (assembled from 10610)
10663	ERDL2-40-T-05.00-DPG (assembled from 10611)
10667	ERDL2-60-T-05.00-DPG (assembled from 10612)
10671	ERDL2-20-T-05.00-SEG (assembled from 10613)
10675	ERDL2-40-T-05.00-SEG (assembled from 10614)
10679	ERDL2-60-T-05.00-SEG (assembled from 10615)
10683	ERDL2-20-T-10.00-DPG (assembled from 10616)
10687	ERDL2-40-T-10.00-DPG (assembled from 10617)
10691	ERDL2-60-T-10.00-DPG (assembled from 10618)
10695	ERDL2-20-T-10.00-SEG (assembled from 10619)
10699	ERDL2-40-T-10.00-SEG (assembled from 10620)
10703	ERDL2-60-T-10.00-SEG (assembled from 10621)

ERDL2-40-SEG		
*Ground is common		
J1 Pin	Signal	J2 Pin
1	G	1
2	S	2
3	S	3
4	G	4
5	G	5
6	S	6
7	S	7
8	G	8
9	G	9
10	S	10
11	S	11
12	G	12
13	G	13
14	S	14
15	S	15
"	"	"
"	"	"
"	"	"
"	"	"
"	"	"
"	"	"
61	G	61
62	S	62
63	S	63
64	G	64
65	G	65
66	S	66
67	S	67
68	G	68
69	G	69
70	S	70
71	S	71
72	G	72
73	G	73
74	S	74
75	S	75
76	G	76
77	G	77
78	S	78
79	S	79
80	G	80

ERDL2-40-DPG			
*Ground is common			
J1 Pin	Signal	J2 Pin	DP Pair
1	S	1	Pair
3	S	3	
5	G	5	Pair
2	S	2	
4	S	4	Pair
6	G	6	
7	S	7	Pair
9	S	9	
11	G	11	Pair
8	S	8	
10	S	10	Pair
12	G	12	
13	S	13	Pair
15	S	15	
17	G	17	Pair
"	"	"	
"	"	"	
"	"	"	
"	"	"	
"	"	"	
"	"	"	
61	S	61	Pair
63	S	63	
65	G	65	Pair
62	S	62	
64	S	64	Pair
66	G	66	
67	S	67	Pair
69	S	69	
71	G	71	Pair
68	S	68	
70	S	70	Pair
72	G	72	
73	S	73	Pair
75	S	75	
77	G	77	Pair
74	S	74	
76	S	76	Pair
78	G	78	
79	S	79	No Connect
80	S	80	

ERDL2-60-SEG		
*Ground is common		
J1 Pin	Signal	J2 Pin
1	G	1
2	S	2
3	S	3
4	G	4
5	G	5
6	S	6
7	S	7
8	G	8
9	G	9
10	S	10
11	S	11
12	G	12
13	G	13
14	S	14
15	S	15
"	"	"
"	"	"
"	"	"
"	"	"
"	"	"
101	G	101
102	S	102
103	S	103
104	G	104
105	G	105
106	S	106
107	S	107
108	G	108
109	G	109
110	S	110
111	S	111
112	G	112
113	G	113
114	S	114
115	S	115
116	G	116
117	G	117
118	S	118
119	S	119
120	G	120

ERDL2-60-DPG			
*Ground is common			
J1 Pin	Signal	J2 Pin	DP Pair
1	S	1	Pair
3	S	3	
5	G	5	Pair
2	S	2	
4	S	4	Pair
6	G	6	
7	S	7	Pair
9	S	9	
11	G	11	Pair
8	S	8	
10	S	10	Pair
12	G	12	
13	S	13	Pair
15	S	15	
17	G	17	Pair
"	"	"	
"	"	"	
"	"	"	
"	"	"	
"	"	"	
"	"	"	
103	S	103	Pair
105	S	105	
107	G	107	Pair
104	S	104	
106	S	106	Pair
108	G	108	
109	S	109	Pair
111	S	111	
113	G	113	Pair
110	S	110	
112	S	112	Pair
114	G	114	
115	S	115	Pair
117	S	117	
119	G	119	Pair
116	S	116	
118	S	118	Pair
120	G	120	

PROPRIETARY NOTE

THIS DOCUMENT CONTAINS INFORMATION CONFIDENTIAL AND PROPRIETARY TO SAMTEC, INC. AND SHALL NOT BE REPRODUCED OR TRANSFERRED TO OTHER DOCUMENTS OR DISCLOSED TO OTHERS OR USED FOR ANY PURPOSE OTHER THAN THAT WHICH IT WAS OBTAINED WITHOUT THE EXPRESSED WRITTEN CONSENT OF SAMTEC, INC.

DO NOT SCALE DRAWING

SHEET SCALE: 1:1



520 PARK EAST BLVD, NEW ALBANY, IN 47150
PHONE 812-944-6733 FAX: 812-948-5047
e-Mail info@SAMTEC.com code 55322

DESCRIPTION: ERx8 FLEX CIRCUIT
DWG. NO. ERDL2-XX-T-XX.XX-XXX
BY: A.OWENS 03/12/08 SHEET 2 OF 2