

FOR MICROPROCESSOR APPLICATIONS

Thordarson's PCP and PFC types are designed specifically for use in triple-output regulated DC supplies that are commonly used in microprocessor circuits and other logic, op-amp combinations. Two output combinations are 5V and $\pm 12V$, and 5V and $\pm 15V$.

Thordarson's units are rated in terms of the final DC output after a standard three-terminal IC regulator. They are designed with AC inputs of 100 to 130V 50/60 Hz (or 200 to 260V for nominal 230V lines).

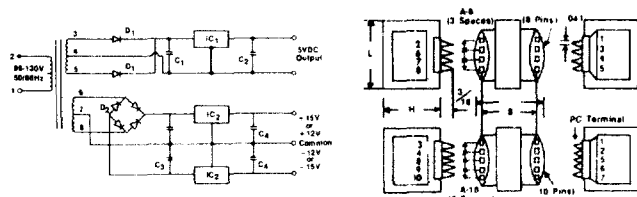
Two output combinations are provided: 5V and $\pm 12V$, and 5V and $\pm 15V$. These transformers are rated in terms of the final DC output after a 3-terminal IC regulator. They are designed to provide these outputs with AC line inputs of 100-130V 50/60 Hz (or 200-260V for nominal 230V lines). All auxiliary components required to complete the DC supply are tabulated.

VERTICAL CORE PCP TYPE

S E C T	Part Number Primary 50/60 Hz		DC Output (Per Schematic) With Suggested Components.		Size
	115V	115/230V			
	8 Pin	10 Pin	Circuit 1	Circuit 2	
A	PCP 916	PCP 917	5VDC 360MA	± 12VDC 60MA	10VA
	PCP 918	PCP 919	5VDC 360MA	± 15VDC 50MA	10VA
	PCP 926	PCP 927	5VDC 835MA	± 12VDC 150MA	24VA
	PCP 928	PCP 929	5VDC 835MA	± 15VDC 130MA	24VA

PCP

PCP

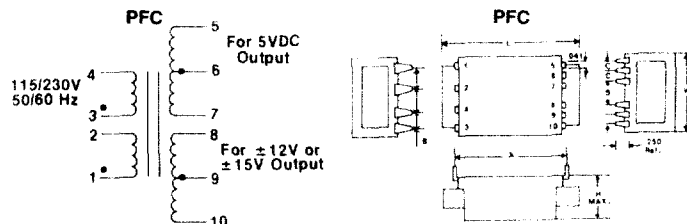


Size	L	W	H	A-8 (8 Pin)	A-10 (10 Pin)	B	Lbs.	Optional Bracket		
								No.	MW	MD
10VA	1 7/8	1 7/16	1 5/8	.250	.200	1.300	.56	10-BR	1 1/4	1 1/8
24VA	1 5/8	2 1/4	1 3/8	.250	.200	2.100	.75	24-BR	1 3/8	2

HORIZONTAL CORE FLAT COMPACT PFC STYLE

S E C T	Part Number Primary 50/60 Hz		DC Output (Per Schematic)		Size
	115V	115/230V	With Suggested Components.		
	8 Pin	10 Pin	Circuit 1	Circuit 2	
B		PFC 922	5VDC 135MA	± 12VDC 40MA	6VA
		PFC 932	5VDC 135MA	± 15VDC 35MA	6VA
		PFC 924	5VDC 270MA	± 12VDC 85MA	12VA
		PFC 934	5VDC 270MA	± 15VDC 70MA	12VA

*National Semiconductor



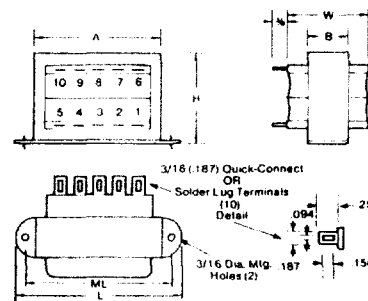
Size	L	W	H	A	B	C	Lbs.
6VA	1 7/8	1 1/16	0.850	1.600	0.375	0.187	.43
12VA	2 1/2	2	1.056	2.000	0.500	0.250	.68

HORIZONTAL CORE - CFP TYPE

S E C T	Part Number Primary 50/60 Hz		DC Output (Per Schematic)		
	115V	115/230V			
	8 Pin	10 Pin	Circuit 1	Circuit 2	Size
C	CFP 953	CFP 952	5VDC 1.75A	± 12VDC 210MA	30VA
	CFP 955	CFP 954	5VDC 1.75A	± 15VDC 175MA	30VA
	CFP 963	CFP 962	5VDC 2.80A	± 12VDC 350MA	50VA
	CFP 965	CFP 964	5VDC 2.80A	± 15VDC 280MA	50VA
	CFP 973	CFP 972	5VDC 4.00A	± 12VDC 600MA	100VA
	CFP 975	CFP 974	5VDC 4.00A	± 15VDC 500MA	100VA

Size	L	W	H	A	B	ML	Lbs.
30VA	3 1/4	1 11/16	1 15/16	2 5/16	1 1/16	2 13/16	1.1
50VA	3 11/16	1 13/16	2 1/4	2 11/16	1 1/16	3 1/8	1.6
100VA	4 1/32	2 1/4	2 9/16	3 1/16	1 5/16	3 9/16	2.75

CFP



CFP

