

**SCANSWITCH™**

**NPN Bipolar Power Deflection Transistors  
 For High and Very High Resolution CRT Monitors**

The MJF16206 and the MJH16206 are state-of-the-art SWITCHMODE III bipolar power transistors. They are specifically designed for use in horizontal deflection circuits for high and very high resolution, monochrome and color CRT monitors.

- 1200 Volt  $V_{CES}$  Breakdown Capability
- Typical Dynamic Desaturation Specified (New Turn-Off Characteristic)
- Maximum Repetitive Emitter-Base Avalanche Energy Specified (Industry First)
- High Current Capability: Performance Specified at 6.5 Amps  
 Continuous Rating — 12 Amps Max  
 Pulsed Rating — 15 Amps Max
- Isolated MJF16206 is UL Recognized
- Fast Switching: 100 ns Inductive Fall Time (Typ)  
 1000 ns Inductive Storage Time (Typ)
- Low Saturation Voltage  
 0.25 Volts (Typ) at 6.5 Amps Collector Current
- High Emitter-Base Breakdown Capability For High Voltage Off Drive Circuits —  
 8.0 V (Min)

**MAXIMUM RATINGS**

Rating	Symbol	MJF16206	MJH16206 MJW16206	Unit
Collector-Emitter Breakdown Voltage	$V_{CES}$	1200		Vdc
Collector-Emitter Sustaining Voltage	$V_{CEO(sus)}$	500		Vdc
Emitter-Base Voltage	$V_{EBO}$	8.0		Vdc
Isolation Voltage (RMS for 1 sec., $T_A = 25^\circ\text{C}$ , Relative Humidity < 30%)	$V_{ISOL}$	4000 3000	— —	$V_{rms}$
Collector Current — Continuous — Pulsed (1)	$I_C$	12		Adc
	$I_{CM}$	15		
Base Current — Continuous — Pulsed (1)	$I_B$	5.0		Adc
	$I_{BM}$	10		
Repetitive Emitter-Base Avalanche Energy	$W_{(BER)}$	0.2		mjoules
Total Power Dissipation @ $T_C = 25^\circ\text{C}$ @ $T_C = 100^\circ\text{C}$ Derated above $25^\circ\text{C}$	$P_D$	50*	150	Watts
		13*	39	
		0.5	1.49	$W/^\circ\text{C}$
Operating and Storage Temperature	$T_J, T_{stg}$	-55 to +125		$^\circ\text{C}$

**THERMAL CHARACTERISTICS**

Characteristic	Symbol	Max		Unit
Thermal Resistance — Junction to Case	$R_{\theta JC}$	2.0*	0.67	$^\circ\text{C}/\text{W}$
Lead Temperature for Soldering Purposes 1/8" from the Case for 5 seconds	$T_L$	260		$^\circ\text{C}$

(1) Pulse Test: Pulse Width = 5.0 ms, Duty Cycle  $\leq$  10%.

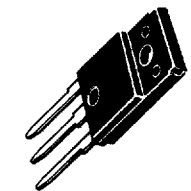
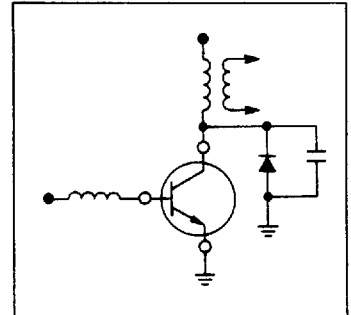
\*Measured made with thermocouple contacting the bottom insulated mounting surface (in a location beneath the die), the device mounted on a heatsink, thermal grease applied, and a mounting torque of 6 to 8 in-lbs.

SCANSWITCH is a trademark of Motorola Inc.

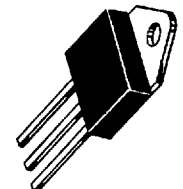
SPECIAL NOTE: The MJH16206 will be replaced by the MJW16206 in CASE 340F-01 (TO-247AE) mid-1991.

**MJF16206**  
**MJH16206**  
**MJW16206**

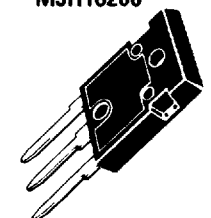
**POWER TRANSISTORS**  
**12 AMPERES**  
**1200 VOLTS —  $V_{CES}$**   
**50 and 150 WATTS**



**CASE 340B-03**  
**MJF16206**  
**UL RECOGNIZED**



**CASE 340-02**  
**TO-218AC**  
**MJH16206**



**CASE 340F-01**  
**TO-247AE**  
**MJW16206**



**MOTOROLA**

**ELECTRICAL CHARACTERISTICS** ( $T_C = 25^\circ\text{C}$  unless otherwise noted)

Characteristic	Symbol	Min	Typ	Max	Unit
Collector Cutoff Current ( $V_{CE} = 1200\text{ Vdc}$ , $V_{BE} = 0\text{ V}$ ) ( $V_{CE} = 850\text{ Vdc}$ , $V_{BE} = 0\text{ V}$ )	$I_{CES}$	—	—	250 25	$\mu\text{A}$
Emitter-Base Leakage ( $V_{EB} = 8.0\text{ Vdc}$ , $I_C = 0$ )	$I_{EBO}$	—	—	25	$\mu\text{A}$
Collector-Emitter Sustaining Voltage (Figure 10) ( $I_C = 10\text{ mA}$ , $I_B = 0$ )	$V_{CEO(sus)}$	500	—	—	Vdc
Emitter-Base Breakdown Voltage ( $I_E = 1.0\text{ mA}$ , $I_C = 0$ )	$V_{(BR)EBO}$	8.0	11	—	Vdc

**ON CHARACTERISTICS (1)**

Collector-Emitter Saturation Voltage ( $I_C = 3.0\text{ A}$ , $I_B = 400\text{ mA}$ ) ( $I_C = 6.5\text{ A}$ , $I_B = 1.5\text{ A}$ )	$V_{CE(sat)}$	—	0.15 0.25	1.0 1.0	Vdc
Base-Emitter Saturation Voltage ( $I_C = 6.5\text{ A}$ , $I_B = 1.5\text{ A}$ )	$V_{BE(sat)}$	—	0.9	1.5	Vdc
DC Current Gain ( $I_C = 1.0\text{ A}$ , $V_{CE} = 5.0\text{ Vdc}$ ) ( $I_C = 10\text{ A}$ , $V_{CE} = 5.0\text{ Vdc}$ ) ( $I_C = 12\text{ A}$ , $V_{CE} = 5.0\text{ Vdc}$ )	$h_{FE}$	— 5.0 3.0	24 8.0 6.0	— 13 —	—


**DYNAMIC CHARACTERISTICS**

Dynamic Desaturation Interval (Figure 15) ( $I_C = 6.5\text{ A}$ , $I_B = 1.5\text{ A}$ , $L_B = 0.5\text{ }\mu\text{H}$ )	$t_{ds}$	—	250	—	ns
Emitter-Base Avalanche Turn-off Energy (Figure 15) ( $t = 500\text{ ns}$ , $R_{BE} = 22\text{ }\Omega$ )	$EB_{(off)}$	—	30	—	$\mu\text{joules}$
Output Capacitance ( $V_{CE} = 10\text{ Vdc}$ , $I_E = 0$ , $f_{test} = 100\text{ kHz}$ )	$C_{ob}$	—	180	350	pF
Gain Bandwidth Product ( $V_{CE} = 10\text{ Vdc}$ , $I_C = 0.5\text{ A}$ , $f_{test} = 1.0\text{ MHz}$ )	$f_T$	—	3.0	—	MHz
Collector-Heatsink Capacitance — MJF16206 Isolated Package (Mounted on a 1" x 2" x 1/16" Copper Heatsink, $V_{CE} = 0$ , $f_{test} = 100\text{ kHz}$ )	$C_{c-hs}$	—	17	—	pF

**SWITCHING CHARACTERISTICS**

Inductive Load (Figure 15) ( $I_C = 6.5\text{ A}$ , $I_B = 1.5\text{ A}$ )	$t_{sv}$	—	1000	2250	ns
Storage	$t_{fi}$	—	100	250	
Fall Time					

(1) Pulse Test: Pulse Width = 300  $\mu\text{s}$ , Duty Cycle  $\leq 2.0\%$ .

Motorola reserves the right to make changes without further notice to any products herein to improve reliability, function or design. Motorola does not assume any liability arising out of the application or use of any product or circuit described herein, neither does it convey any license under its patent rights nor the rights of others. Motorola products are not designed, intended, or authorized for use as components in systems intended for surgical implant into the body, or other applications intended to support or sustain life, or for any other application in which the failure of the Motorola product could create a situation where personal injury or death may occur. Should Buyer purchase or use Motorola products for any such unintended or unauthorized application, Buyer shall indemnify and hold Motorola and its officers, employees, subsidiaries, affiliates, and distributors harmless against all claims, costs, damages, and expenses, and reasonable attorney fees arising out of, directly or indirectly, any claim of personal injury or death associated with such unintended or unauthorized use, even if such claim alleges that Motorola was negligent regarding the design or manufacture of the part. Motorola and  are registered trademarks of Motorola, Inc. Motorola, Inc. is an Equal Opportunity/Affirmative Action Employer.

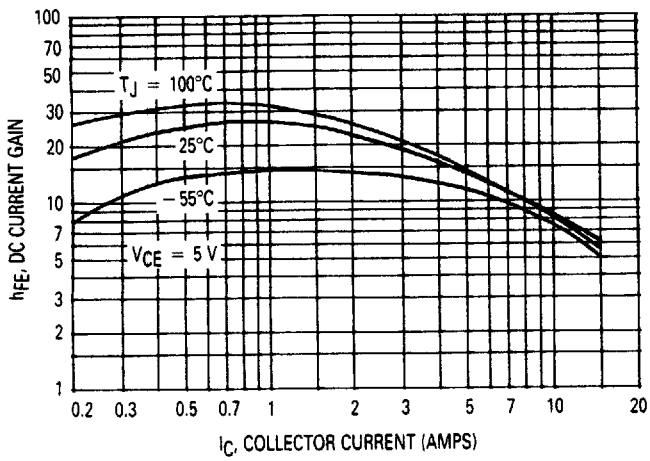


Figure 1. Typical DC Current Gain

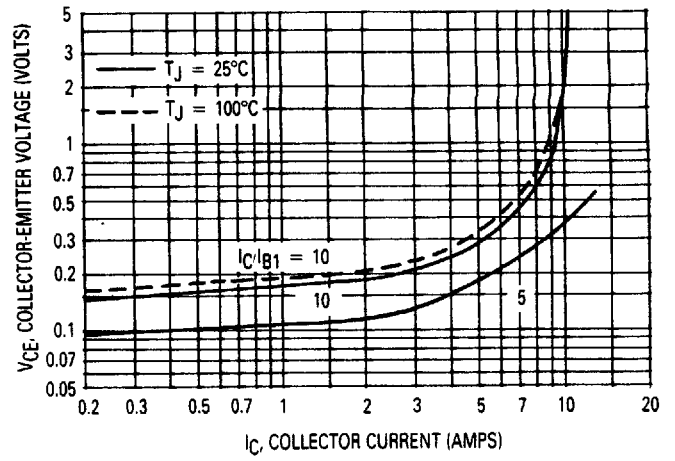


Figure 2. Typical Collector-Emitter Saturation Voltage

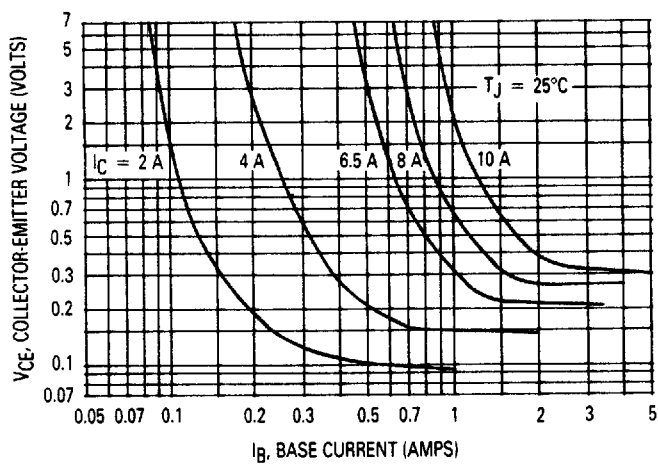


Figure 3. Typical Collector Saturation Region

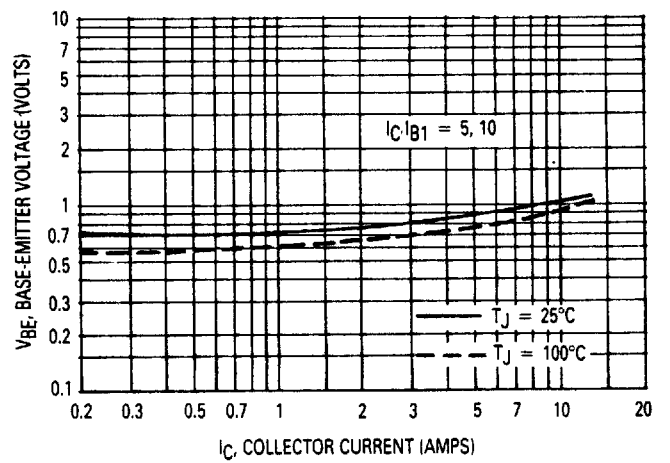


Figure 4. Typical Base Emitter Saturation Voltage

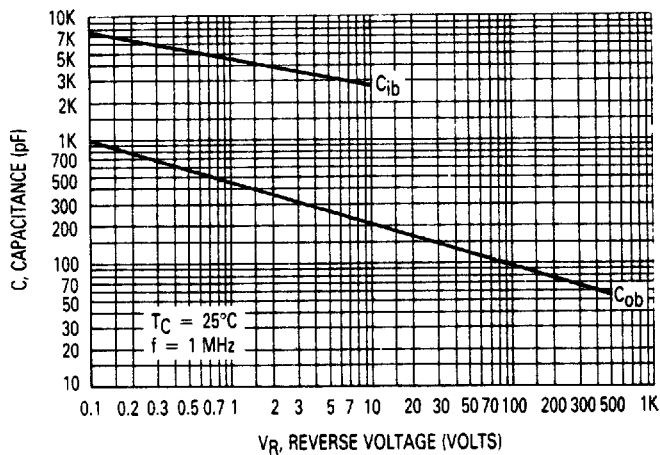


Figure 5. Typical Capacitance

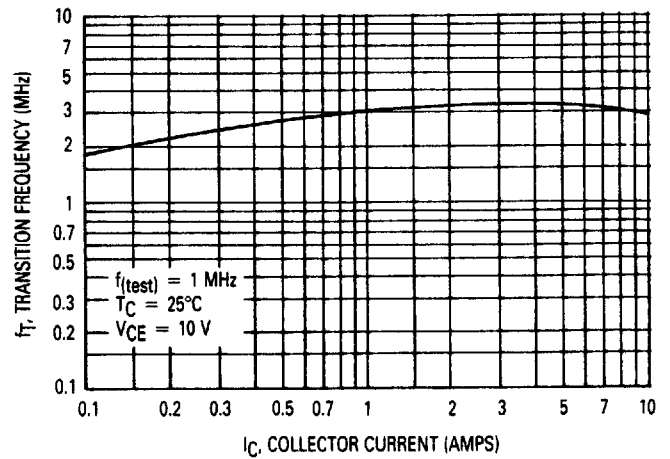
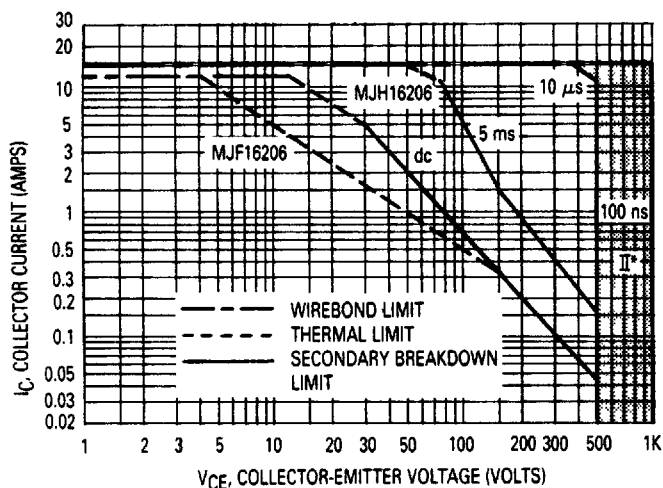


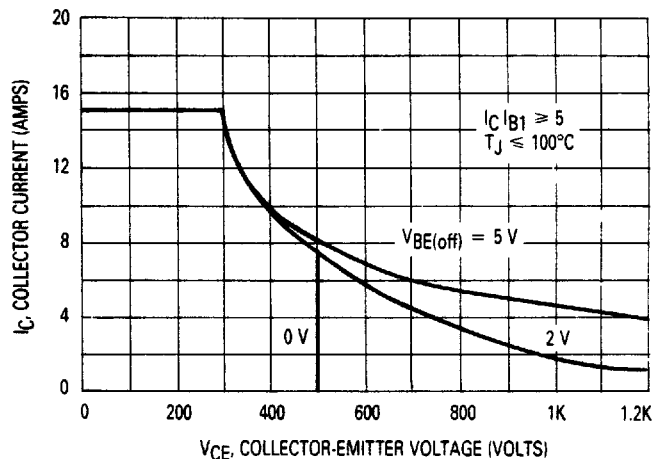
Figure 6. Typical Transition Frequency

# SAFE OPERATING AREA INFORMATION



\*REGION II — EXPANDED FBSOA USING MUR8100E, ULTRAFAST RECTIFIER (SEE FIGURE 12)

**Figure 7. Maximum Forward Biased Safe Operating Area**



**Figure 8. Maximum Reverse Bias Safe Operating Area**

## FORWARD BIAS

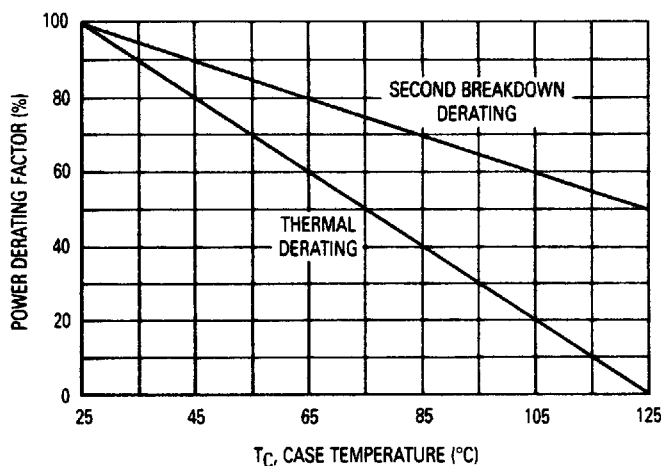
There are two limitations on the power handling ability of a transistor: average junction temperature and second breakdown. Safe operating area curves indicate  $I_C$ - $V_{CE}$  limits of the transistor that must be observed for reliable operation; i.e., the transistor must not be subjected to greater dissipation than the curves indicate.

The data of Figure 7 is based on  $T_C = 25^\circ\text{C}$ ;  $T_J(pk)$  is variable depending on power level. Second breakdown pulse limits are valid for duty cycles to 10% but must be derated when  $T_C \geq 25^\circ\text{C}$ . Second breakdown limitations do not derate the same as thermal limitations. Allowable current at the voltages shown on Figure 7 may be found at any case temperature by using the appropriate curve on Figure 9.

At high case temperatures, thermal limitations will reduce the power that can be handled to values less than the limitations imposed by second breakdown.

## REVERSE BIAS

Inductive loads, in most cases, require the emitter-to-base junction be reversed biased because high voltage and high current must be sustained simultaneously during turn-off. Under these conditions, the collector voltage must be held to a safe level at or below a specific value of collector current. This can be accomplished by several means such as active clamping, RC snubbing, load line



**Figure 9. Power Derating**

shaping, etc. The safe level for these devices is specified as Reverse Biased Safe Operating Area and represents the voltage-current condition allowable during reverse biased turn-off. This rating is verified under clamped conditions so that the device is never subjected to an avalanche mode. Figure 8 gives the RBSOA characteristics.

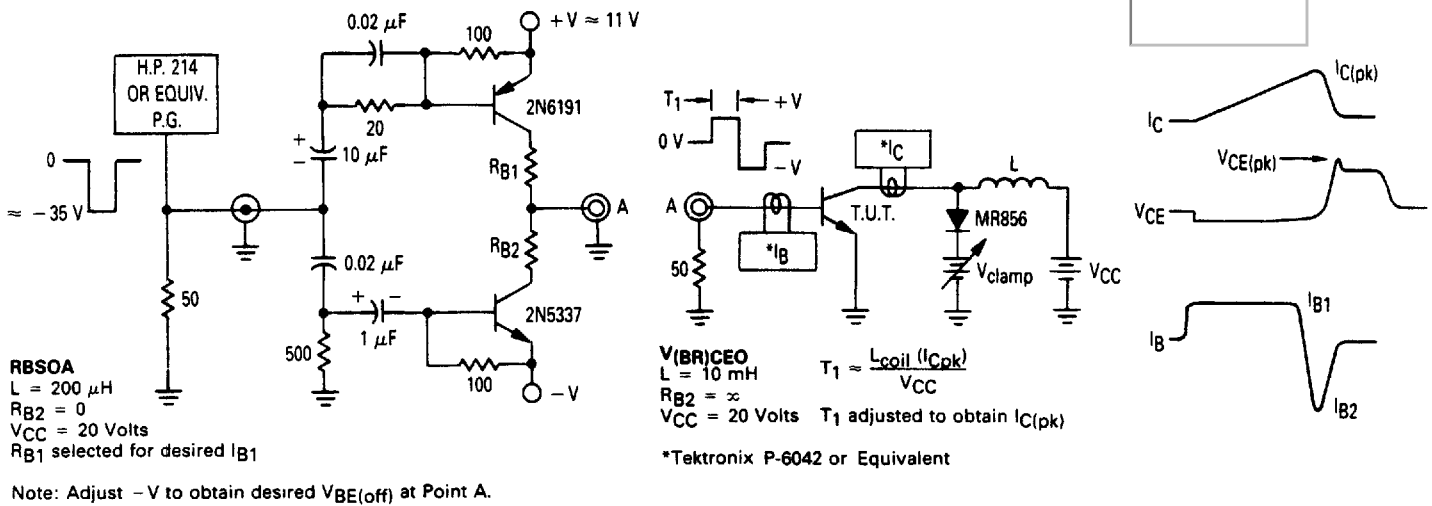


Figure 10. RBSOA/ $V(BR)_{CEO}(sus)$  Test Circuit

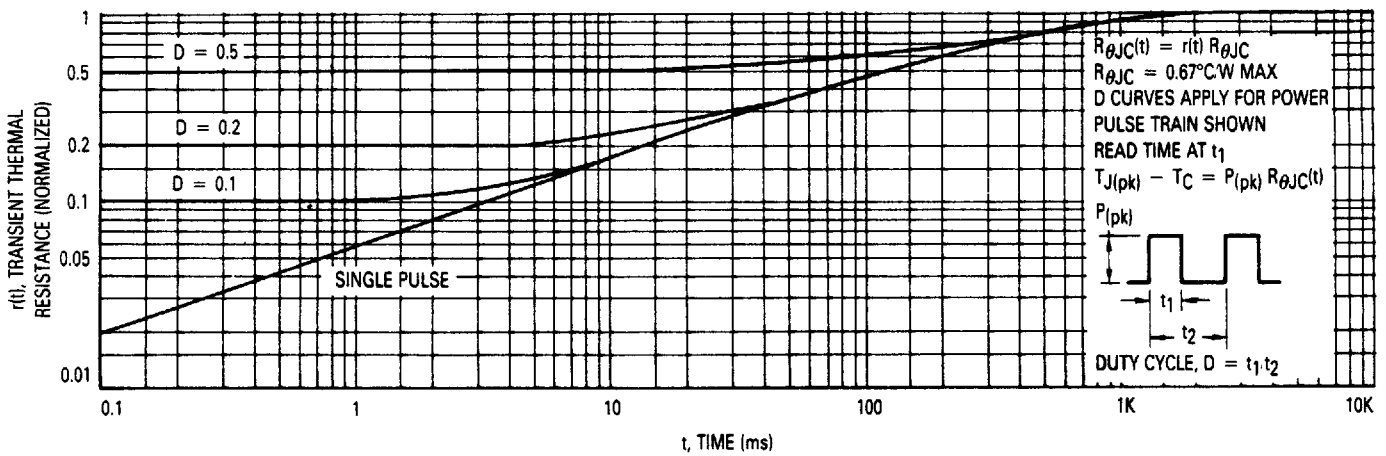
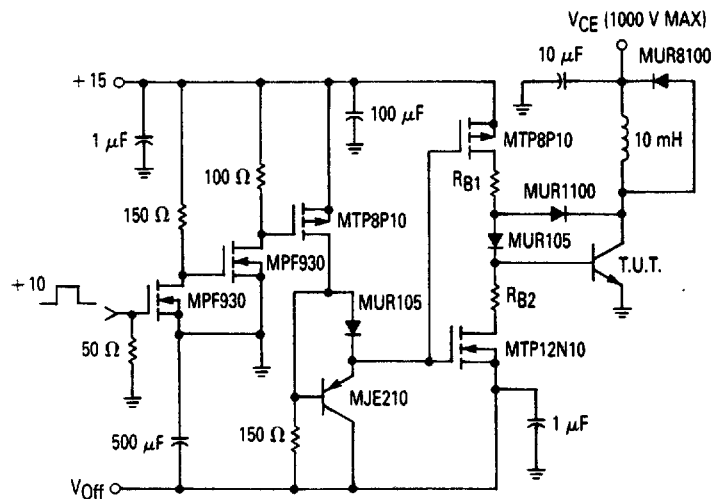


Figure 11. Thermal Response



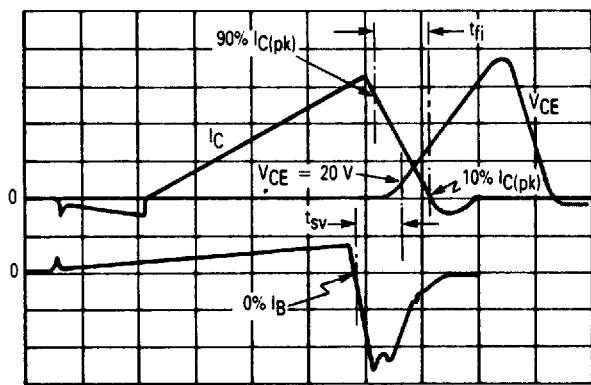
Note: Test Circuit for Ultrafast FBSOA  
 $R_{B2} = 0$  and  $V_{Off} = -5 \text{ Volts}$

Figure 12. Switching Safe Operating Area

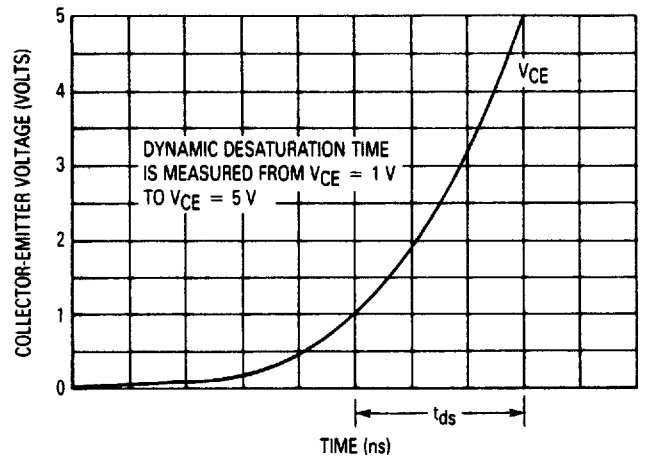
**DYNAMIC DESATURATION**

The SCANSWITCH series of bipolar power transistors are specifically designed to meet the unique requirements of horizontal deflection circuits in computer monitor applications. Historically, deflection transistor design was focused on minimizing collector current fall time. While fall time is a valid figure of merit, a more important indicator of circuit performance as scan rates are increased is a new characteristic, "dynamic desaturation." In order to assure a linear collector current ramp, the output transistor must remain in hard saturation during storage time and exhibit a rapid turn-off transition. A sluggish transition results in serious consequences. As the saturation voltage of the output transistor increases,

the voltage across the yoke drops. Roll off in the collector current ramp results in improper beam deflection and distortion of the image at the right edge of the screen. Design changes have been made in the structure of the SCANSWITCH series of devices which minimize the dynamic desaturation interval. Dynamic desaturation has been defined in terms of the time required for the  $V_{CE}$  to rise from 1.0 to 5.0 volts (Figures 13 and 14) and typical performance at optimized drive conditions has been specified. Optimization of device structure results in a linear collector current ramp, excellent turn-off switching performance, and significantly lower overall power dissipation.



**Figure 13. Deflection Simulator Switching Waveforms From Circuit in Figure 15**



**Figure 14. Definition of Dynamic Desaturation Measurement**







# OUTLINE DIMENSIONS

STYLE 1:  
PIN 1. BASE  
2. COLLECTOR  
3. EMITTER

**CASE 340B-03  
MJF16206**

**NOTES:**  
1. DIMENSIONING AND TOLERANCING PER ANSI Y14.5M, 1982.  
2. CONTROLLING DIMENSION. INCH.

DIM	MILLIMETERS		INCHES	
	MIN	MAX	MIN	MAX
A	19.97	20.21	0.786	0.796
B	13.97	14.47	0.550	0.570
C	4.81	5.05	0.189	0.199
D	1.10	1.24	0.043	0.049
F	10.98 BSC		0.432 BSC	
G	5.44 BSC		0.214 BSC	
H	2.52	2.71	0.099	0.107
J	0.51	0.71	0.020	0.028
K	11.94	12.31	0.470	0.485
L	11.82	12.06	0.465	0.475
M	7° NOM		7° NOM	
Q	3.41	3.60	0.134	0.142
S	3.56	4.06	0.140	0.160
U	2.95	3.05	0.116	0.120
V	2.52	2.76	0.099	0.109

STYLE 1:  
PIN 1. BASE  
2. COLLECTOR  
3. EMITTER  
4. COLLECTOR

**CASE 340-02  
TO-218AC  
MJH16206**

**NOTES:**  
1. DIMENSIONING AND TOLERANCING PER ANSI Y14.5M, 1982.  
2. CONTROLLING DIMENSION. INCH.

DIM	MILLIMETERS		INCHES	
	MIN	MAX	MIN	MAX
A	20.32	21.08	0.800	0.830
B	15.49	15.90	0.610	0.626
C	4.19	5.08	0.165	0.200
D	1.02	1.65	0.040	0.065
E	1.35	1.65	0.053	0.065
G	5.21	5.72	0.205	0.225
H	2.65	2.94	0.104	0.116
J	0.51	0.71	0.020	0.028
K	12.70	15.49	0.500	0.610
L	15.88	16.51	0.625	0.650
N	12.19	12.70	0.490	0.500
Q	4.04	4.22	0.159	0.166

STYLE 3:  
PIN 1. BASE  
2. COLLECTOR  
3. EMITTER  
4. COLLECTOR

**CASE 340F-01  
TO-247AE  
MJW16206 (Replaces MJH16206 mid-1991)**

**NOTES:**  
1. DIMENSIONING AND TOLERANCING PER ANSI Y14.5M, 1982.  
2. CONTROLLING DIMENSION. MILLIMETER.

DIM	MILLIMETERS		INCHES	
	MIN	MAX	MIN	MAX
A	20.40	20.90	0.803	0.823
B	15.44	15.95	0.608	0.628
C	4.70	5.21	0.185	0.205
D	1.09	1.30	0.043	0.051
E	1.85	1.98	0.073	0.078
F	1.80	2.18	0.071	0.086
G	5.46 BSC		0.215 BSC	
H	2.56	2.87	0.101	0.113
J	0.48	0.68	0.019	0.027
K	15.57	16.08	0.613	0.633
L	7.26	7.52	0.286	0.296
P	3.07	3.38	0.121	0.133
Q	3.50	3.71	0.138	0.146
R	3.30	3.81	0.130	0.150
U	5.33 BSC		0.210 BSC	
V	3.05	3.43	0.120	0.135

## TEST CONDITIONS FOR ISOLATION TESTS\*

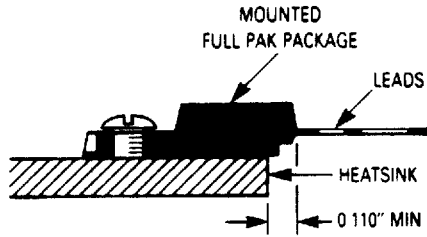


Figure 19. Screw or Clip Mounting Position for Isolation Test Number 1

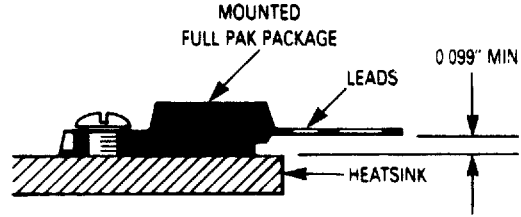


Figure 20. Screw or Clip Mounting Position for Isolation Test Number 2

\*Measurement made between leads and heatsink with all leads shorted together.

## MOUNTING INFORMATION\*\*

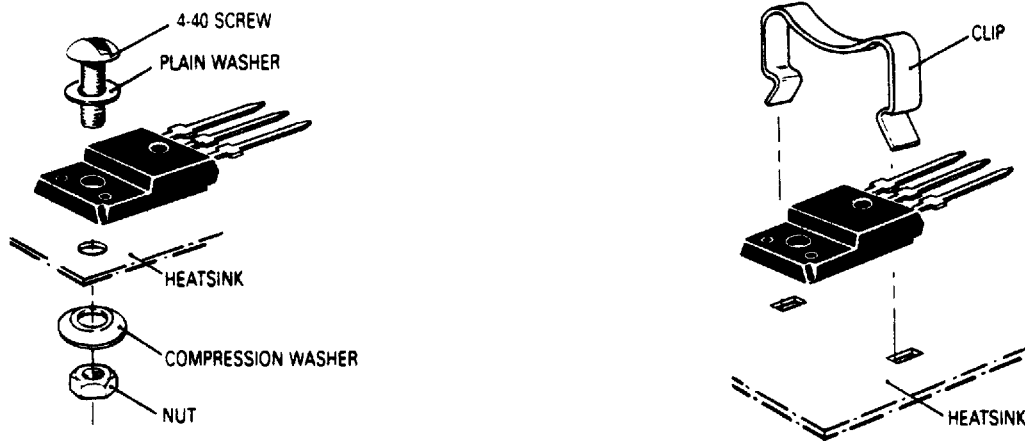


Figure 21. Typical Mounting Techniques\*

Laboratory tests on a limited number of samples indicate, when using the screw and compression washer mounting technique, a screw torque of 6 to 8 in • lbs is sufficient to provide maximum power dissipation capability. The compression washer helps to maintain a constant pressure on the package over time and during large temperature excursions.

Destructive laboratory tests show that using a hex head 4-40 screw, without washers, and applying a torque in excess of 20 in • lbs will cause the plastic to crack around the mounting hole, resulting in a loss of isolation capability.

Additional tests on slotted 4-40 screws indicate that the screw slot fails between 15 to 20 in • lbs without adversely affecting the package. However, in order to positively insure the package integrity of the Full Pak, Motorola does not recommend exceeding 10 in • lbs of mounting torque under any mounting conditions.

\*\*For more information about mounting power semiconductors see Application Note AN1040

### Literature Distribution Centers:

USA: Motorola Literature Distribution; P.O. Box 20912; Phoenix, Arizona 85036.

EUROPE: Motorola Ltd., European Literature Center; 88 Tanners Drive, Blakelands, Milton Keynes, MK14 5BP, England.

JAPAN: Nippon Motorola Ltd., 4-32-1, Nishi-Gotanda, Shinagawa-ku, Tokyo 141 Japan.

ASIA-PACIFIC: Motorola Semiconductors H.K. Ltd.; Silicon Harbour Center, No. 2 Dai King Street, Tai Po Industrial Estate, Tai Po, N.T., Hong Kong.



**MOTOROLA**

MJF16206 • MJH16206  
MJW16206