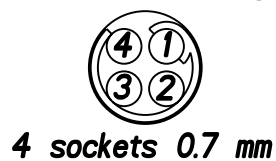
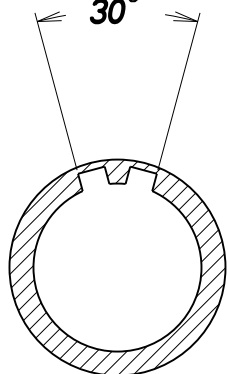


# Insulator Viewed from wiring side

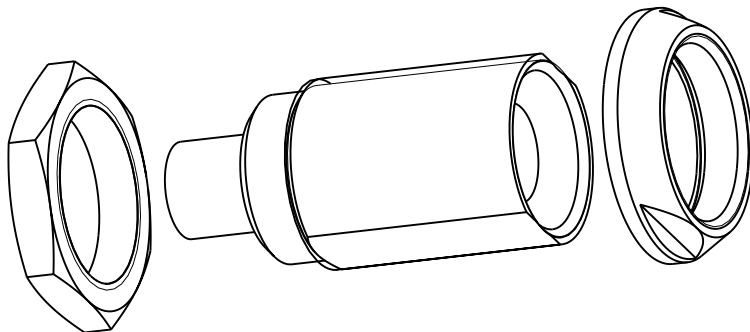
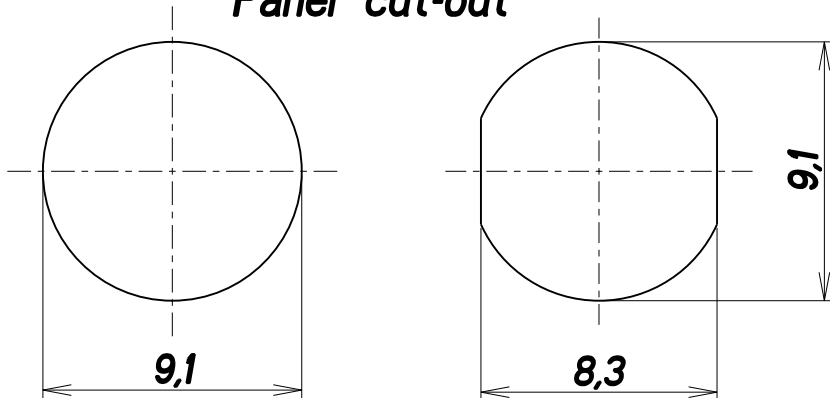


Keying

30°

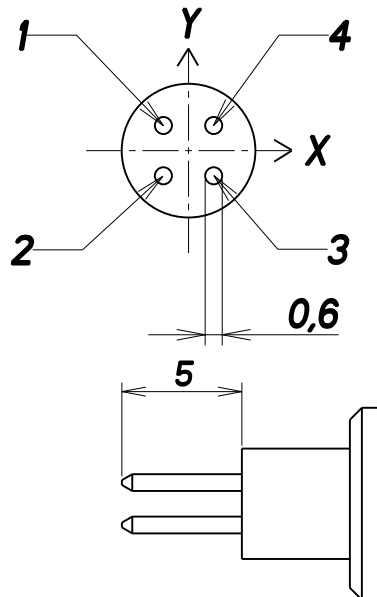


Panel cut-out

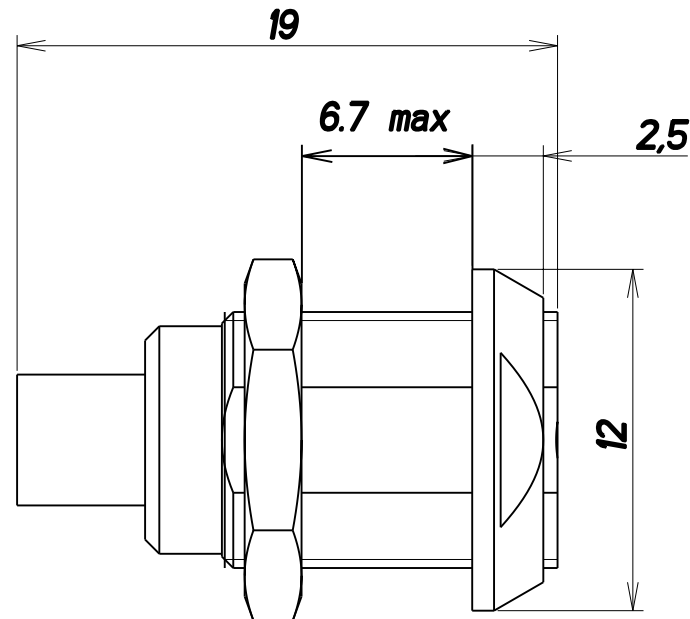


## PCB drilling


Rep	X	Y
1	-0.9	0.9
2	-0.9	-0.9
3	0.9	-0.9
4	0.9	0.9



## Dimensions (mm)



**DOUBLE NUT RECEPTACLE size 0**

		xxx mm-dd-yy	xxx mm-dd-yy		
REV	DESCRIPTION	BY DATE	CHKD DATE	SHEET No.	ZONE
REVISION					
DRAWING TITLE					
DOUBLE NUT RECEPTACLE SIZE 0					
CAT NO.					
JBX-EA-0A-04-FP-SDS					
DWG RELEASED TO CENTRAL FILE: X		APPROVAL	DRAWN: JAB	10-26-00	
CAGE NO: --	DON: --		CHKD : RC	10-26-00	
	PC: --		DSGN : --	--	
	SIZE: A		MFG : --	--	
			QC : --	--	
 <b>INTERCONNECTIONS</b>			DRAWING SCALE: 4/1		
			DRAWING NO. REV		
			JBX-EA-0A-04-FP-SDS 0		
			I OF I		
			www.fciconnect.com		