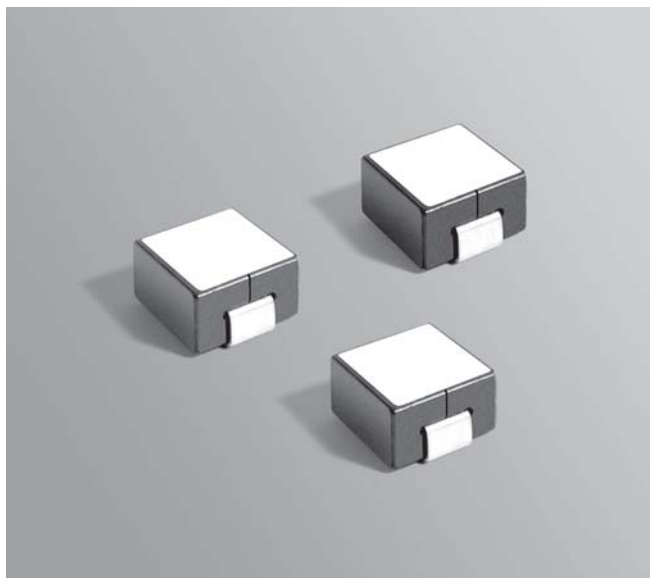


**NEW!**

# Shielded Power Inductors – SLC1480



The SLC1480 is designed for high-speed switch mode applications requiring low inductance and very high saturation current ratings. While requiring a mere quarter square inch of board space, it can handle current as high as 130 A.

These shielded inductors are ideal for use in multi-phase VRM/VRD regulators and high current/high frequency DC/DC converters.

For free evaluation samples, contact Coilcraft or order them on-line at [www.coilcraft.com](http://www.coilcraft.com).

Part number <sup>1</sup>	Inductance <sup>2</sup> ±20% (nH)	DCR (mOhms) <sup>3</sup>		SRF typ <sup>4</sup> (MHz)	Isat (A) <sup>5</sup>			Irms (A) <sup>6</sup>	
		min	max		10% drop	20% drop	30% drop	20°C rise	40°C rise
SLC1480-111ML_	110	0.15	0.21	130	110	128	130	39	55
SLC1480-131ML_	130	0.15	0.21	110	97	110	112	39	55
SLC1480-151ML_	150	0.15	0.21	108	88	95	97	39	55
SLC1480-171ML_	170	0.15	0.21	75	80	87	90	39	55
SLC1480-201ML_	200	0.15	0.21	68	65	72	76	39	55
SLC1480-231ML_	230	0.15	0.21	59	57	64	67	39	55
SLC1480-261ML_	260	0.15	0.21	50	50	57	61	39	55
SLC1480-301ML_	300	0.15	0.21	46	42	49	52	39	55
SLC1480-321ML_	320	0.15	0.21	42	38	44	48	39	55
SLC1480-441ML_	440	0.15	0.21	35	28	32	35	39	55

1. When ordering, please specify **packaging** code:

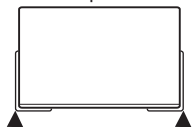
**SLC1480-321ML D**

**Packaging:** D = 13" machine-ready reel. EIA-481 embossed plastic tape (500 per full reel).

B = Less than full reel. In tape, but not machine ready.  
To have a leader and trailer added (\$25 charge), use code letter C instead.

2. Inductance tested at 100 kHz, 0.1 Vrms using an Agilent/HP 4284.

3. DCR is measured between the two points indicated below.



▲ Points used for measuring DCR

4. SRF measured using an Agilent/HP 8753ES network analyzer or equivalent.

5. DC current at which the inductance drops from its value without current.

6. Current that causes the specified temperature rise from 25°C ambient.

7. Electrical specifications at 25°C.

Refer to Doc 362 "Soldering Surface Mount Components" before soldering.

**Core material** Ferrite

**Terminations** RoHS compliant matte tin over nickel over copper.  
Other terminations available at additional cost.

**Weight** 5.25 g

**Ambient temperature** -40°C to +85°C with Irms current, +85°C to +125°C with derated current

**Storage temperature** Component: -40°C to +125°C.

Packaging: -40°C to +80°C

**Resistance to soldering heat** Max three 40 second reflows at +260°C, parts cooled to room temperature between cycles

**Moisture Sensitivity Level (MSL)** 1 (unlimited floor life at <30°C / 85% relative humidity)

**Failures in Time (FIT) / Mean Time Between Failures (MTBF)**

38 per billion hours / 26,315,789 hours, calculated per Telcordia SR-332

**Packaging** 500/13" reel; Plastic tape: 24 mm wide, 0.4 mm thick, 16 mm pocket spacing, 8.1 mm pocket depth

**PCB washing** Only pure water or alcohol recommended

# Coilcraft®

Specifications subject to change without notice.  
Please check our website for latest information.

Document 482-1 Revised 03/02/11

1102 Silver Lake Road Cary, Illinois 60013 Phone 847/639-6400 Fax 847/639-1469

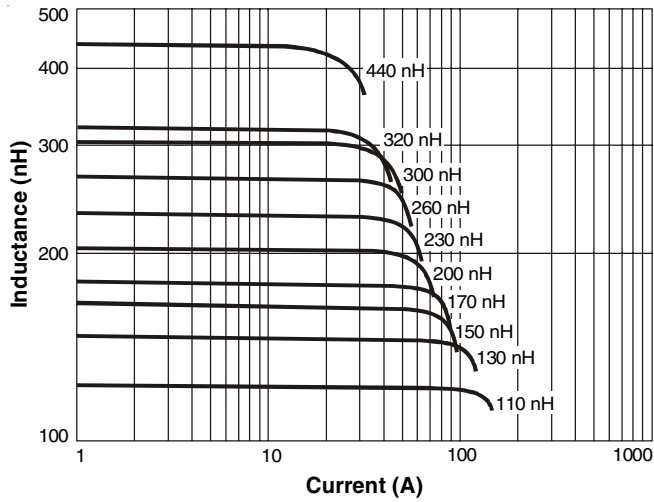
E-mail [info@coilcraft.com](mailto:info@coilcraft.com) Web <http://www.coilcraft.com>

**NEW!**

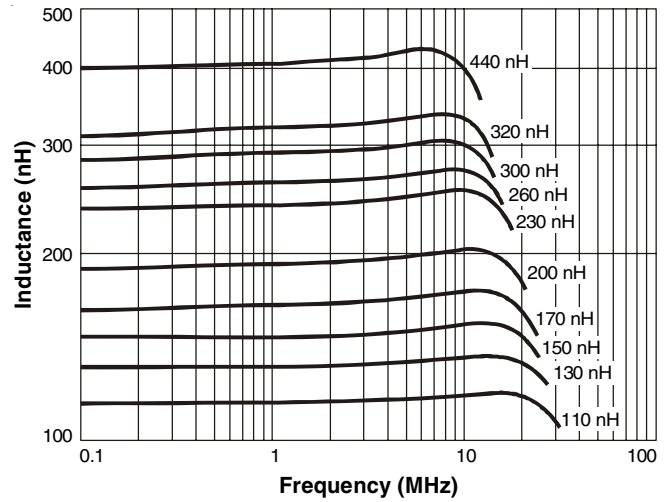


# SMT Power Inductors – SLC1480 Series

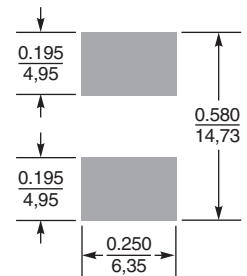
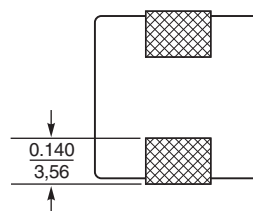
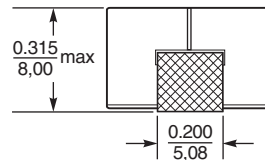
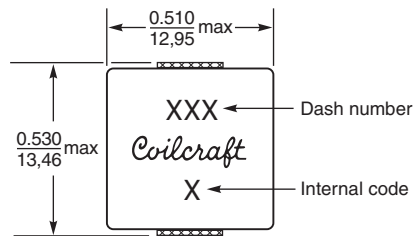
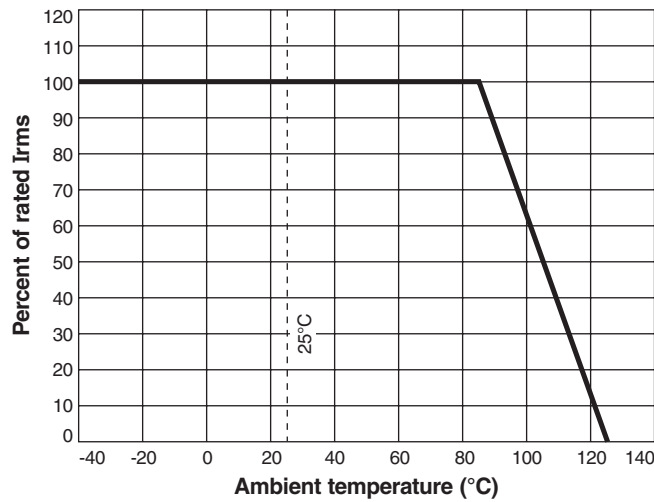
## L vs Current



## L vs Frequency



## I<sub>rms</sub> Derating



Dimensions are in  $\frac{\text{inches}}{\text{mm}}$

**Recommended Land Pattern**



Specifications subject to change without notice. Please check our website for latest information.

Document 482-2 Revised 03/02/11

1102 Silver Lake Road Cary, Illinois 60013 Phone 847/639-6400 Fax 847/639-1469

E-mail [info@coilcraft.com](mailto:info@coilcraft.com) Web <http://www.coilcraft.com>