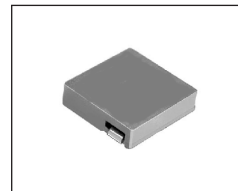


SMT Power Inductor

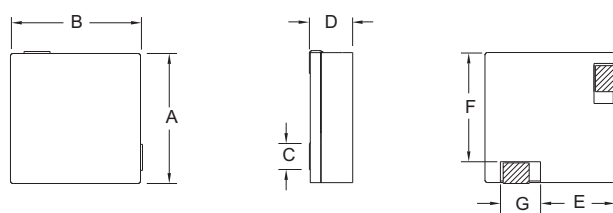
HAL1375 Type

Features

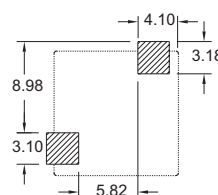
- RoHS compliant.
 - Low profile (7.5mm max. height) SMD type.
 - Magnetically shielded, suitable for high density mounting.
 - High energy storage and low DCR.
 - Provided with embossed carrier tape packing.
 - Ideal for power source circuits, DC-DC converter, DC-AC inverters inductor application.
- In addition to the standard versions shown here, customized inductors are available to meet your exact requirements.



Mechanical Dimension:



RECOMMENDED PAD PATTERNS



UNIT: mm / inch
 A = 12.5±0.4 / 0.492±0.016
 B = 12.5±0.4 / 0.492±0.016
 C = 7.50 / 0.295 Max.
 D = 2.40 / 0.094
 E = 7.75 / 0.305
 F = 10.35 / 0.407
 G = 3.75 / 0.148

Electrical Characteristics: At 25°C: 100KHz, 1V

PART NO.	L_0 ¹ (μ H)	L_i (μ H)±20%	DCR (m Ω) MAX	I_{sat} ² (A \bar{c})
HAL1375-1R0	1.0	0.80	1.20	30
HAL1375-1R4	1.4	1.10	1.50	30
HAL1375-2R0	2.0	1.60	2.80	25
HAL1375-2R5	2.5	2.00	3.20	25

1. L_0 is the initial inductance.
2. I_{sat} is the DC current which cause the inductance drop to L_i .
3. Operating temperature : -20°C to 105°C (including self-temperature rise).



DELTA ELECTRONICS, INC.

(TAOYUAN PLANT CPBG) 252, SAN YING ROAD, KUEISAN INDUSTRIAL ZONE, TAOYUAN SHIEN, 333, TAIWAN, R.O.C.

TEL: 886-3-3591968; FAX: 886-3-3591991

<http://www.deltaww.com>