

IEC Appliance Inlet C20 with Circuit Breaker TA35 1-pole



C20



70° C

**Description**

- Panel Mount:
 - Snap-in version from front side
- 2 Functions:
 - Appliance Inlet, Protection class I, Circuit breaker type TA35, 1-pole
- Quick connect terminals 6.3 x 0.8 mm
- Alternative: version for 10 A (15 A) [6135](#)
- Substitute for type [1624-K](#)

Approvals

- VDE License Number: 40025196
- UL License Number: E96454

Characteristics

- Unwired
- Switch non-illuminated or illuminated
- Thermal overload protection
- Qualified for use in equipment according IEC/EN 60950

Other versions on request

- Pre-wired version
- Quick-connect terminals 4.8 x 0.8 mm
- Protection class II, 70°C

References

[General Product Information](#)

Weblinks

[Approvals](#), [RoHS](#), [CHINA-RoHS](#), [e-Store](#), [SCHURTER-Stock-Check](#), [Distributor-Stock-Check](#)

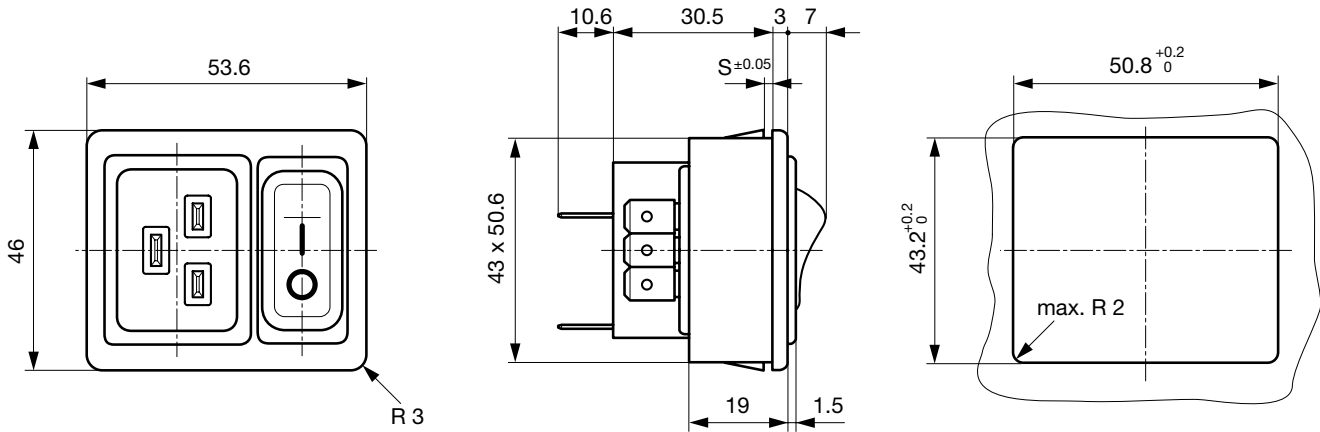
Technical Data

Ratings IEC	16A / 250VAC; 50Hz
Ratings UL/CSA	20A / 250VAC; 60Hz
Dielectric Strength	> 2.5 kVAC between L-N > 3 kVAC between L/N-PE (1 min/50Hz)
Allowable Operation Temp.	-25 °C to 60 °C
Degree of Protection	from front side IP 40 acc. to IEC 60529
Protection Class	Suitable for appliances with protection class I acc. to IEC 61140
Terminal	Quick connect terminals 6.3 x 0.8 mm
Panel Thickness s	Snap-in: 1.5/ 2/ 2.5 mm
Material: Housing	Thermoplastic, black, UL 94V-0

Appliance-Inlet/-Outlet	C20 acc. to IEC/EN 60320-1, UL 498, CSA C22.2 no. 42 (for cold conditions) pin-temperature 70 °C, 16A, Protection class I
Circuit breaker	Acc. IEC/EN 60934, UL 1077, CSA 22.2 no. 235 1-pole rocker switch, illuminated or non-illuminated. Conditional short circuit Inc: 2000 A

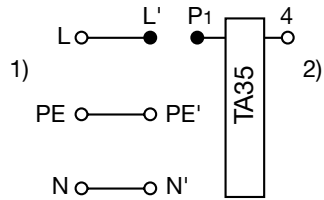
Dimensions

Length |-----| 53.6 mm



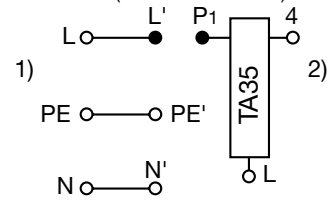
Diagrams

non-illuminated



- 1) Line
- 2) Load

illuminated (connection N' to L)

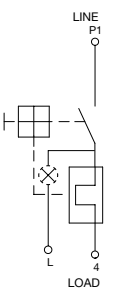


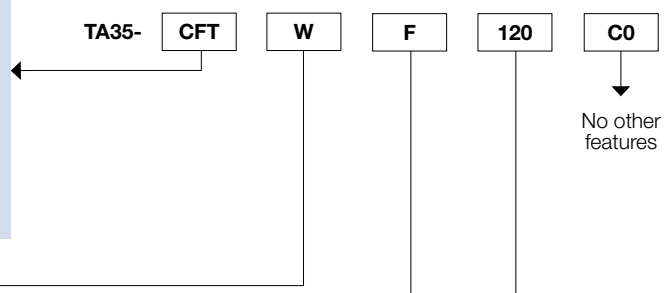
- 1) Line
- 2) Load

ORDER CODE

Table 1 Selection for type TA35

Order example

Number of switched poles		1-pole	
Number of protected poles		1	
			
Switch	without illumination	CFT	
Switch	illuminated 240 V 120 V	C2F C4F	
Other versions on request			



Colours

	Switch front	Rocker	
		non-illuminated	illuminated
W	black	white	–
B	black	black	–
3	black	–	red transparent
4	black	–	green transparent
6	black	–	orange transparent

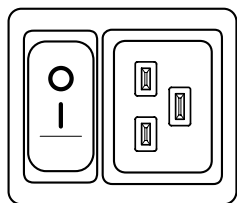
Other colours on request

Rocker legend

	Surface	Illustration		Colour of print
F	embossed	–	o	
H	printed	ON	OFF	white
K	printed	ON	OFF	black
L	printed	–	o	white
M	printed	–	o	black

Other legends on request

Position of the rocker legend e.g. F



Rated current I_n (A)

I _n	Code	I _n	Code
1,0	J10	8,0	080
2,0	J20	10,0	100
4,0	040	12,0	120
5,0	050	15,0	150
6,0	060	20,0	200

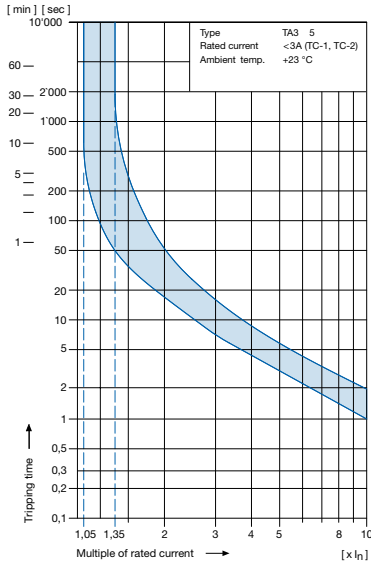
Other rated currents on request

Technical data (continued)

Circuit breaker

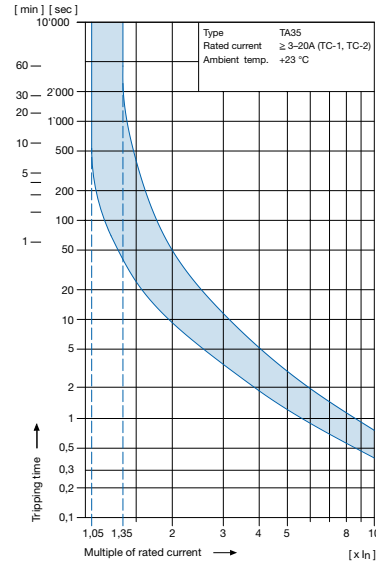
Tripping characteristics

$I_n < 3 A$



Tripping characteristics

$I_n \geq 3 \dots \leq 20 A$



Effect of ambient temperature

The unit is calibrated for an ambient temperature of +23 °C. To determine the rated current for lower or higher ambient temperature, use a correction factor from the table below.

* Ambient temperature [°C]	Correction factor
-25	0.79
-20	0.81
0	0.90
+23	1.00
+40	1.03
+50	1.04
+60	1.06

* Temperature must be measured at the rear of the breaker next to the terminals after equipment operating temperature has been reached.

Example:

Rated current at +23 °C 10 A
 Ambient temperature +60 °C
 Correction factor 1.06
 Chosen rated current at +60 °C
 ambient temperature: **10 A x 1.06 = 10.6 A**

Order code (Order example)

Type	Order code TA35	Wiring 1 wired 0 unwired
6136	C F T W F 1 2 0 C 0	
	see table 1	Terminals 1 Quick connect 6.3 x 0.8 mm
	. 0 2 1 0	
		Mounting 2 Snap-in s = 1.5 mm 3 Snap-in s = 2.0 mm 4 Snap-in s = 2.5 mm
		0 Protection class 1

Please note that Schurter will establish an internal part number for logistics use in addition to the order code. The format of this internal part number is, for example: 6136.xxxx.xxxx

Packaging unit 15 Pcs

Mating Outlets/Connectors

Category / Description

Connector



IEC connector C19, Cord Connector (Rewireable), Straight	0104
IEC connector C19, Cord Connector (Rewireable), Angled	1651
IEC connector C19, Cord Connector (Rewireable), Straight	1652
IEC connector C19, Cord Connector (Rewireable), Angled	4790
IEC connector C19, Cord Connector (Rewireable), Straight	4795



Power Cord

Power Cord with IEC Appliance Connector C19, Straight	1654
---	------



Power Supply or Interconnection Cord

	6009.5195
--	-----------