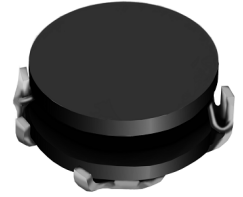
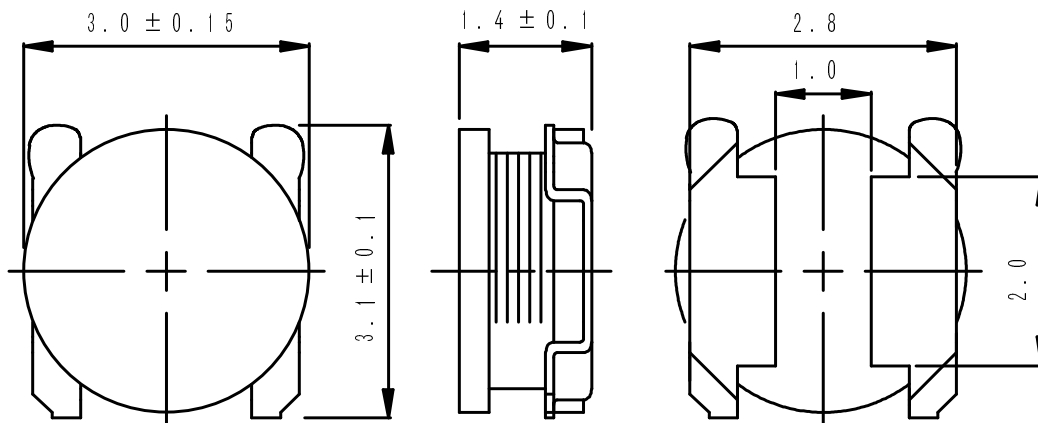
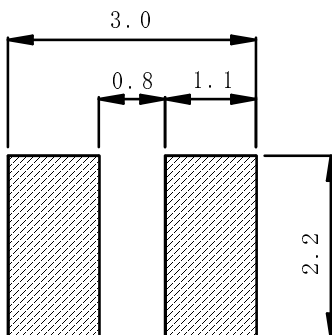


Type: CDH30D14D, CDH30D14D/LD
◆ Product Description

- 3.2×3.15mm Max.(L×W), 1.5mm Max. Height.
- Inductance range:1.0~15 μ H(CDH30D14D);1.0~22 μ H(CDH30D14D/LD);
- Rated current range:0.51~2.20A(CDH30D14D); 0.36~1.62A(CDH30D14D/LD).
- Custom design is available.


◆ Feature

- Magnetically unshielded construction.
- Ideally used in Mobilephone,PDA,MP3,DSC/DVC,HDD,etc as DC-DC Converter inductors.
- RoHS Compliance and Halogen free.

◆ Dimensions (mm)

◆ Land Pattern (mm)


Type: CDH30D14D, CDH30D14D/LD
◆ Specification(CDH30D14D)

| Part Name ※ | Stamp | Inductance [μ H] 100kHz/1V | D.C.R.(m Ω) (at 20°C) | Saturation Current (A) ※1 | | Temperature Rise Current (A) ※2 |
|-------------------|-------|---------------------------------------|----------------------------------|------------------------------|----------|---------------------------------------|
| | | | | at 20°C | at 100°C | |
| CDH30D14DHF-1R0N□ | A | 1.0±30% | 48±25% | 2.66 | 2.25 | 2.20 |
| CDH30D14DHF-1R6N□ | B | 1.6±30% | 66±25% | 2.19 | 1.83 | 1.82 |
| CDH30D14DHF-2R2N□ | C | 2.2±30% | 87±25% | 1.89 | 1.53 | 1.57 |
| CDH30D14DHF-3R3M□ | D | 3.3±20% | 121±20% | 1.53 | 1.28 | 1.28 |
| CDH30D14DHF-4R7M□ | E | 4.7±20% | 206±20% | 1.23 | 1.05 | 1.00 |
| CDH30D14DHF-6R8M□ | F | 6.8±20% | 271±20% | 1.05 | 0.90 | 0.80 |
| CDH30D14DHF-100M□ | G | 10±20% | 408±20% | 0.89 | 0.74 | 0.68 |
| CDH30D14DHF-150M□ | H | 15±20% | 613±20% | 0.68 | 0.59 | 0.51 |

◆ Specification(CDH30D14D/LD)

| Part Name ※ | Stamp | Inductance [μ H] 100kHz/1V | D.C.R.(m Ω) (at 20°C) | Saturation Current (A) ※1 | | Temperature Rise Current (A) ※2 |
|--------------------|-------|---------------------------------------|----------------------------------|------------------------------|----------|---------------------------------------|
| | | | | at 20°C | at 100°C | |
| CDH30D14DLDF-1R0N□ | A | 1.0±30% | 40±25% | 1.62 | 1.42 | 2.38 |
| CDH30D14DLDF-1R5N□ | B | 1.5±30% | 50±25% | 1.33 | 1.18 | 2.15 |
| CDH30D14DLDF-2R2M□ | C | 2.2±20% | 61±25% | 1.13 | 0.96 | 1.93 |
| CDH30D14DLDF-3R3M□ | D | 3.3±20% | 85±25% | 0.90 | 0.79 | 1.57 |
| CDH30D14DLDF-4R7M□ | E | 4.7±20% | 120±20% | 0.78 | 0.68 | 1.15 |
| CDH30D14DLDF-6R8M□ | F | 6.8±20% | 177±20% | 0.62 | 0.54 | 0.94 |
| CDH30D14DLDF-100M□ | G | 10±20% | 268±20% | 0.52 | 0.46 | 0.83 |
| CDH30D14DLDF-150M□ | H | 15±20% | 365±20% | 0.42 | 0.37 | 0.66 |
| CDH30D14DLDF-220M□ | J | 22±20% | 590±20% | 0.36 | 0.32 | 0.52 |

※ Description of Part Name

CDH30D14DLDF-1R0N□
└─ B: Box
└─ C: Carrier Tape

※1. Saturation Current: The DC current at which the inductance decreases to 70% of its nominal value.

※2. Temperature Rise Current: The DC current at which the temperature rise is $\Delta t=40^{\circ}\text{C}$. ($T_a=20^{\circ}\text{C}$)