

DATA SHEET

PCA153X series 32 kHz clock circuit

Product specification
Supersedes data of October 1988
File under Integrated Circuits, IC16

December 1993

Philips Semiconductors



PHILIPS

32 kHz clock circuit**PCA153X series****FEATURES**

- 32 kHz oscillator frequency
- Low current consumption; typically 2 μ A, maximum 5 μ A
- Low minimum supply voltage: 1.1 V
- Output for bipolar stepping motor
 - output frequency 1 Hz
 - pulse duration: see Table 1 Available types
- Test mode speed-up with an input frequency up to 20 Hz (unchanged pulse duration).

GENERAL DESCRIPTION

The PCA153X series are silicon-gate CMOS integrated circuits specially suited for battery-operated, quartz-crystal-controlled clocks, with a bipolar stepping motor.

ORDERING INFORMATION

EXTENDED TYPE NUMBER	PACKAGE			
	PINS	PIN POSITION	MATERIAL	CODE
PCA1532P	8	DIL	plastic	SOT97
PCA1534P	8	DIL	plastic	SOT97
PCA1532T	8	SO	plastic	SO8; SOT96C
PCA1534T	8	SO	plastic	SO8; SOT96C
PCA1532U/10	–	chip on film frame carrier (FFC)	–	–
PCA1534U/10	–	chip on film frame carrier (FFC)	–	–

Table 1 Available types.

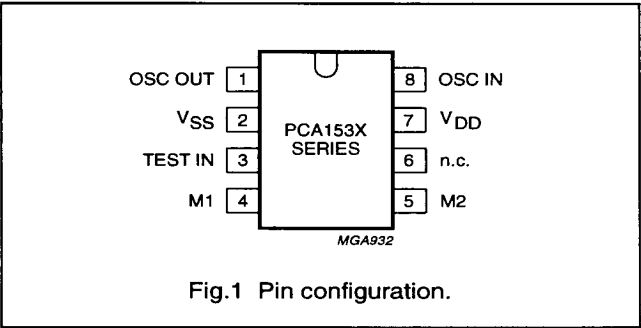
TYPE NUMBER	PULSE WIDTH t_p (ms)	CAPACITANCE OUTPUT C_o (pF)	CAPACITANCE INPUT C_i (pF)
PCA1532	23.4	24.0	3.0
PCA1534	46.8	24.0	3.0

32 kHz clock circuit

PCA153X series

PINNING

SYMBOL	PIN	DESCRIPTION
OSC OUT	1	oscillator output
V _{SS}	2	ground (0 V)
TEST IN	3	test input
M1	4	motor 1 output
M2	5	motor 2 output
n.c.	6	not connected
V _{DD}	7	supply voltage
OSC IN	8	oscillator input



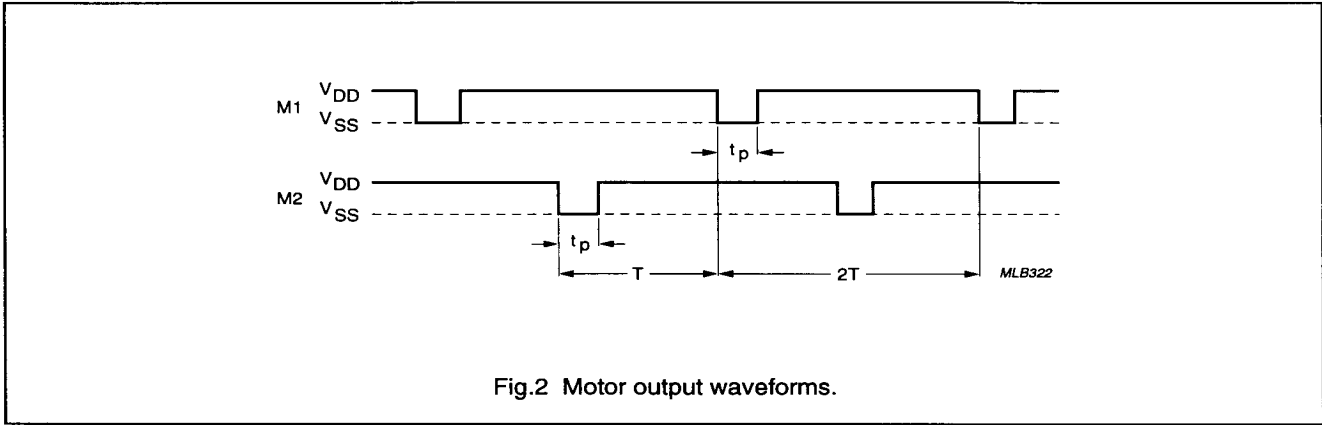
FUNCTIONAL DESCRIPTION AND TESTING

Operating mode

In the operating mode pin 3 must be left open-circuit or connected to V_{DD}.

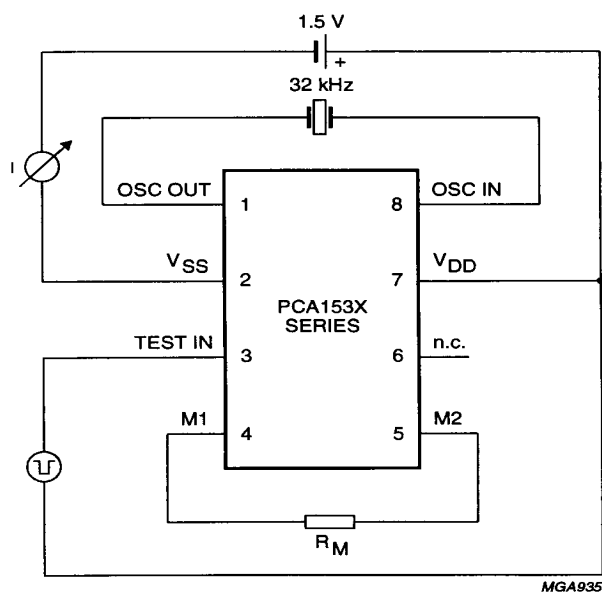
Test mode

When testing the motor, a test frequency can be applied to TEST IN (pin 3) which allows the motor outputs to be accelerated up to 20 Hz.



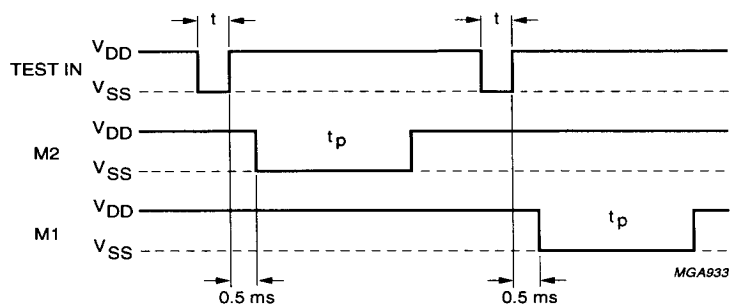
32 kHz clock circuit

PCA153X series



MGA935

Fig.3 Test speed-up circuit.



MGA933

Fig.4 Test speed-up signals.

32 kHz clock circuit

PCA153X series

LIMITING VALUES

In accordance with the Absolute Maximum Rating System (IEC134).

SYMBOL	PARAMETER	CONDITIONS	MIN.	MAX.	UNIT
V_{SS}	supply voltage	$V_{DD} = 0$ V; note 1	+1.8	−6.0	V
V_I	input voltage		V_{SS}	V_{DD}	V
	output short-circuit duration at pins 4 and 5		indefinite		
T_{amb}	operating ambient temperature		−10	+60	°C
T_{stg}	storage temperature		−30	+125	°C

Note to the “Limiting values”

1. Connecting the battery at 1.8 V maximum with reversed polarity does not destroy the circuit, but in this condition a large current flows, which will rapidly discharge the battery.

HANDLING

Inputs and outputs are protected against electrostatic discharges in normal handling. However, to be totally safe, it is advisable to take handling precautions appropriate to handling MOS devices (see 'Handling MOS Devices').

32 kHz clock circuit

PCA153X series

CHARACTERISTICS

$V_{DD} = 0\text{ V}$; $V_{SS} = -1.4\text{ V}$; $f_{osc} = 32.768\text{ kHz}$; $T_{amb} = 25\text{ °C}$; crystal: $R_S = 20\text{ k}\Omega$; $C_i = 2\text{ to }3\text{ fF}$; $C_o = 1\text{ to }3\text{ pF}$; $C_L = 10\text{ pF}$; unless otherwise specified.

SYMBOL	PARAMETER	CONDITIONS	MIN.	TYP.	MAX.	UNIT
Supply (pins 2 and 7)						
V_{SS1}	supply voltage	operating	-1.1	–	-1.8	V
V_{SS2}	supply voltage	starting	-1.2	–	–	V
I_{DD}	supply current	$R_L = \infty$	–	2	5	μA
Motor outputs (pins 4 and 5)						
T	period		–	1.0	–	s
t_p	pulse width		–	23.4	–	ms
	PCA1532 PCA1534		–	46.8	–	ms
I_M	current into load	$R_M = 200\text{ }\Omega$; $V_{SS} = -1.2\text{ V}$	± 4	–	–	mA
R_O	output resistance	$R_M = 200\text{ }\Omega$	–	60	–	Ω
Test input (pin 3)						
I_I	input current	TEST IN at V_{SS}	–	70	–	μA
Oscillator (pins 1 and 8)						
R_p	polarization resistance		3	10	30	$\text{M}\Omega$
C_o	output capacitance (pin 1)	note 1	–	24.0	–	pF
	PCA1532 PCA1534		–	24.0	–	pF
C_i	input capacitance (pin 8)	note 1	–	3.0	–	pF
	PCA1532 PCA1534		–	3.0	–	pF
$\Delta f/f$	frequency stability	$\Delta V_{SS} = 100\text{ mV}$	–	0.4×10^{-6}	–	

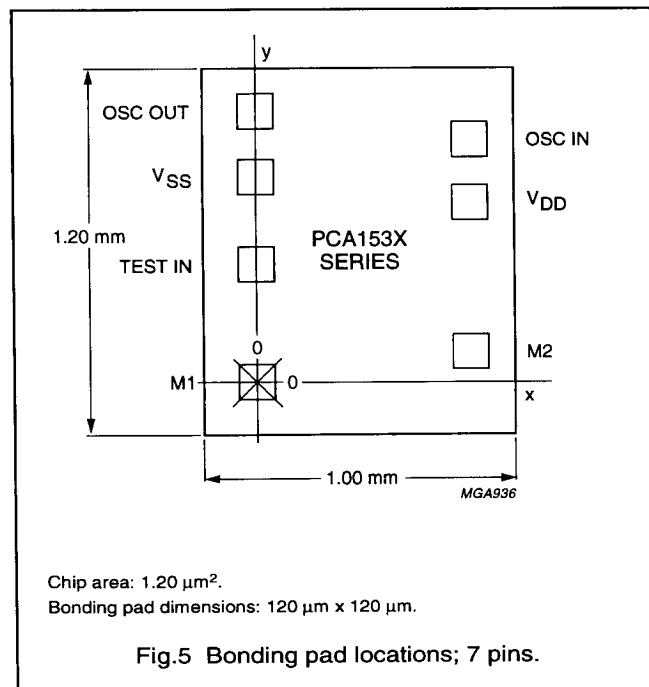
Note to the “Characteristics”

- Sum of C_i and C_o limited to 40 pF.

32 kHz clock circuit

PCA153X series

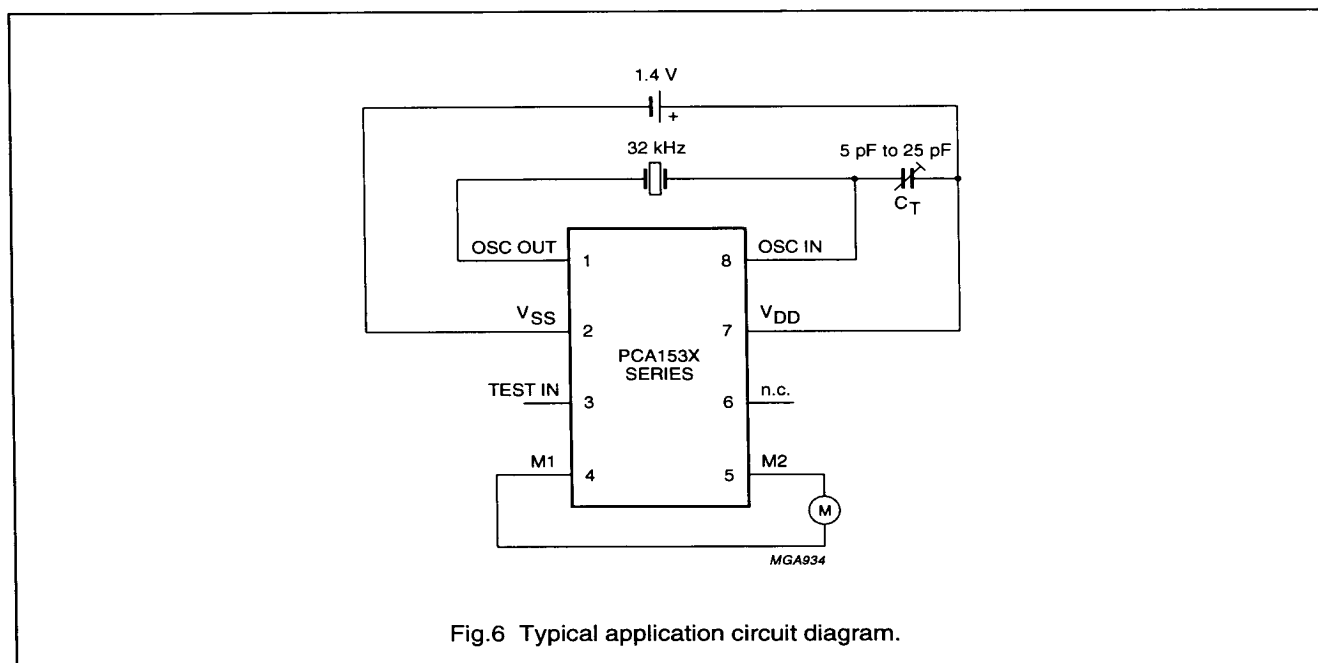
CHIP DIMENSIONS AND BONDING PAD LOCATIONS

Bonding pad locations (dimensions in μm).

All x/y coordinates are referenced to bottom left pad (M1), see Fig.6.

PAD	x	y
OSC OUT	0	880
V _{SS}	0	670
TEST IN	0	380
M1	0	0
M2	675	94
V _{DD}	675	575
OSC IN	675	785
chip corner (max. value)	-180	-180

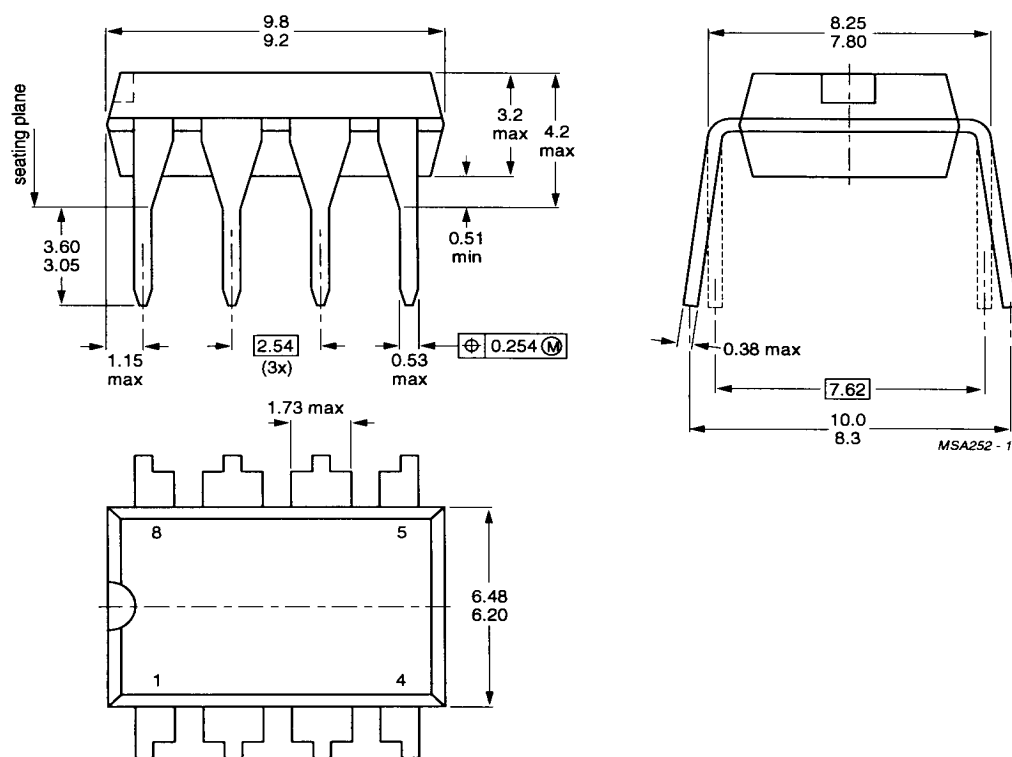
APPLICATION INFORMATION



32 kHz clock circuit

PCA153X series

PACKAGE OUTLINES

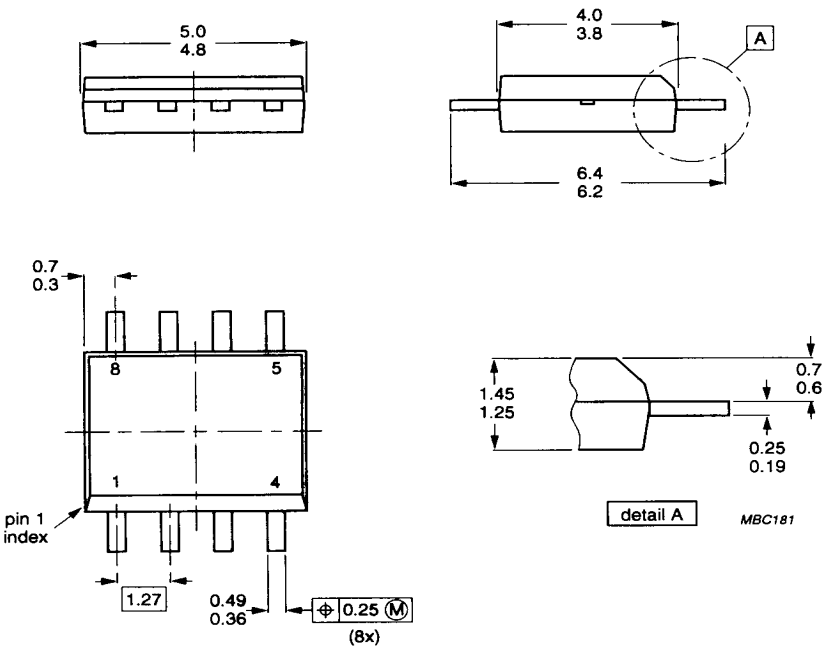


Dimensions in mm.

Fig.7 8-lead dual in-line; plastic (SOT97).

32 kHz clock circuit

PCA153X series



Dimensions in mm.

Fig.8 8-lead small outline; plastic (SO8; SOT96C).

32 kHz clock circuit

PCA153X series

SOLDERING

Plastic dual in-line packages

BY DIP OR WAVE

The maximum permissible temperature of the solder is 260 °C; this temperature must not be in contact with the joint for more than 5 s. The total contact time of successive solder waves must not exceed 5 s.

The device may be mounted up to the seating plane, but the temperature of the plastic body must not exceed the specified storage maximum. If the printed-circuit board has been pre-heated, forced cooling may be necessary immediately after soldering to keep the temperature within the permissible limit.

REPAIRING SOLDERED JOINTS

Apply the soldering iron below the seating plane (or not more than 2 mm above it). If its temperature is below 300 °C, it must not be in contact for more than 10 s; if between 300 and 400 °C, for not more than 5 s.

Plastic small outline

BY WAVE

During placement and before soldering, the component must be fixed with a droplet of adhesive. After curing the adhesive, the component can be soldered. The adhesive can be applied by screen printing, pin transfer or syringe dispensing.

Maximum permissible solder temperature is 260 °C, and maximum duration of package immersion in solder bath is 10 s, if allowed to cool to less than 150 °C within 6 s. Typical dwell time is 4 s at 250 °C.

A modified wave soldering technique is recommended using two solder waves (dual-wave), in which a turbulent wave with high upward pressure is followed by a smooth laminar wave. Using a mildly-activated flux eliminates the need for removal of corrosive residues in most applications.

BY SOLDER PASTE REFLOW

Reflow soldering requires the solder paste (a suspension of fine solder particles, flux and binding agent) to be applied to the substrate by screen printing, stencilling or pressure-syringe dispensing before device placement.

Several techniques exist for reflowing; for example, thermal conduction by heated belt, infrared, and vapour-phase reflow. Dwell times vary between 50 and 300 s according to method. Typical reflow temperatures range from 215 to 250 °C.

Preheating is necessary to dry the paste and evaporate the binding agent. Preheating duration: 45 min. at 45 °C.

REPAIRING SOLDERED JOINTS (BY HAND-HELD SOLDERING IRON OR PULSE-HEATED SOLDER TOOL)

Fix the component by first soldering two, diagonally opposite, end pins. Apply the heating tool to the flat part of the pin only. Contact time must be limited to 10 s at up to 300 °C. When using proper tools, all other pins can be soldered in one operation within 2 to 5 s at between 270 and 320 °C. (Pulse-heated soldering is not recommended for SO packages.)

For pulse-heated solder tool (resistance) soldering of VSO packages, solder is applied to the substrate by dipping or by an extra thick tin/lead plating before package placement.

32 kHz clock circuit

PCA153X series

DEFINITIONS

Data sheet status	
Objective specification	This data sheet contains target or goal specifications for product development.
Preliminary specification	This data sheet contains preliminary data; supplementary data may be published later.
Product specification	This data sheet contains final product specifications.
Limiting values	
Limiting values given are in accordance with the Absolute Maximum Rating System (IEC 134). Stress above one or more of the limiting values may cause permanent damage to the device. These are stress ratings only and operation of the device at these or at any other conditions above those given in the Characteristics sections of the specification is not implied. Exposure to limiting values for extended periods may affect device reliability.	
Application information	
Where application information is given, it is advisory and does not form part of the specification.	

LIFE SUPPORT APPLICATIONS

These products are not designed for use in life support appliances, devices, or systems where malfunction of these products can reasonably be expected to result in personal injury. Philips customers using or selling these products for use in such applications do so at their own risk and agree to fully indemnify Philips for any damages resulting from such improper use or sale.

Philips Semiconductors – a worldwide company

Argentina: IEROD, Av. Juramento 1992 - 14.b, (1428)
BUENOS AIRES, Tel. (541)786 7633, Fax. (541)786 9367

Australia: 34 Waterloo Road, NORTH RYDE, NSW 2113,
Tel. (02)805 4455, Fax. (02)805 4466

Austria: Triester Str. 64, A-1101 WIEN, P.O. Box 213,
Tel. (01)60 101-1236, Fax. (01)60 101-1211

Belgium: Postbus 90050, 5600 PB EINDHOVEN, The Netherlands,
Tel. (31)40 783 749, Fax. (31)40 788 399

Brazil: Rua do Rocio 220 - 5th floor, Suite 51,
CEP: 04552-903-SÃO PAULO-SP, Brazil.
P.O. Box 7383 (01064-970),
Tel. (011)829-1166, Fax. (011)829-1849

Canada: INTEGRATED CIRCUITS:
Tel. (800)234-7381, Fax. (708)296-8556
DISCRETE SEMICONDUCTORS: 601 Milner Ave,
SCARBOROUGH, ONTARIO, M1B 1M8,
Tel. (0416)292 5161 ext. 2336, Fax. (0416)292 4477

Chile: Av. Santa Maria 0760, SANTIAGO,
Tel. (02)773 816, Fax. (02)777 6730

Colombia: Carrera 21 No. 56-17, BOGOTÁ, D.E., P.O. Box 77621,
Tel. (571)217 4609, Fax. (01)217 4549

Denmark: Prags Boulevard 80, PB 1919, DK-2300 COPENHAGEN S,
Tel. (032)88 2636, Fax. (031)57 1949

Finland: Sinikalliontie 3, FIN-02630 ESPOO,
Tel. (9)0-50261, Fax. (9)0-520971

France: 4 rue du Port-aux-Vins, BP317,
92156 SURESNES Cedex,
Tel. (01)4099 6161, Fax. (01)4099 6427

Germany: P.O. Box 10 63 23, 20095 HAMBURG ,
Tel. (040)3296-0, Fax. (040)3296 213

Greece: No. 15, 25th March Street, GR 17778 TAVROS,
Tel. (01)4894 339/4894 911, Fax. (01)4814 240

Hong Kong: 15/F Philips Ind. Bldg., 24-28 Kung Yip St.,
Kwai Chung, Tel. (0)4245 121, Fax. (0)4806 960

India: PEICO ELECTRONICS & ELECTRICALS Ltd.,
Components Dept., Shivsagar Estate, Block 'A',
Dr. Annie Besant Rd., Worli, BOMBAY-400 018,
Tel. (022)4938 541, Fax. (022)4938 722

Indonesia: Philips House, Jalan H.R. Rasuna Said Kav. 3-4,
P.O. Box 4252, JAKARTA 12950,
Tel. (021)5201 122, Fax. (021)5205 189

Ireland: Newstead, Clonskeagh, DUBLIN 14,
Tel. (01)640 000, Fax. (01)640 200

Italy: Viale F. Testi, 327, 20162-MILANO,
Tel. (02)6752.1, Fax. (02)6752.3350

Japan: Philips Bldg 13-37, Kohnan2-chome, Minato-ku, KOKIO 108,
Tel. (03)3740 5101, Fax. (03)3740 0570

Korea: (Republic of) Philips House, 260-199 Itaewon-dong,
Yongsan-ku, SEOUL, Tel. (02)794-5011, Fax. (02)798-8022

Malaysia: No. 76 Jalan Universiti, 46200 PETALING JAYA,
SELANGOR, Tel. (03)757 5511, Fax. (03)757 4880

Mexico: Philips Components, 5900 Gateway East, Suite 200,
EL PASO, TX 79905, Tel. 9-5(800)234-7381, Fax. (708)296-8556

Netherlands: Postbus 90050, 5600 PB EINDHOVEN,
Tel. (040)78 37 49, Fax. (040)78 83 99

New Zealand: 2 Wagener Place, C.P.O. Box 1041, AUCKLAND,
Tel. (09)849-4160, Fax. (09)849-7811

Norway: Box 1, Manglerud 0612, OSLO,
Tel. (22)74 8000, Fax. (22)74 8341

Pakistan: Philips Markaz, M.A. Jinnah Rd., KARACHI-3,
Tel. (021)577 039, Fax. (021)569 1832

Philippines: PHILIPS SEMICONDUCTORS PHILIPPINES Inc.,
106 Valero St. Salcedo Village, P.O. Box 911, MAKATI,
Metro MANILA, Tel. (02)810 0161, Fax. (02)817 3474

Portugal: Av. Eng. Duarte Pacheco 6, 1009 LISBOA Codex,
Tel. (01)683 121, Fax. (01)658 013

Singapore: Lorong 1, Toa Payoh, SINGAPORE 1231,
Tel. (65)350 2000, Fax. (65)251 6500

South Africa: 195-215 Main Road, Martindale,
P.O. Box 7430, JOHANNESBURG 2000,
Tel. (011)470-5433, Fax. (011)470-5494

Spain: Balmes 22, 08007 BARCELONA,
Tel. (03)301 6312, Fax. (03)301 4243

Sweden: Kottbygatan 7, Akalla. S-164 85 STOCKHOLM,
Tel. (0)8-632 2000, Fax. (0)8-632 2745

Switzerland: Allmendstrasse 140, CH-8027 ZÜRICH,
Tel. (01)488 2211, Fax. (01)481 7730

Taiwan: 69, Min Sheng East Road, Sec 3, P.O. Box 22978,
TAIPEI 10446, Tel. (2)509 7666, Fax. (2)500 5899

Thailand: PHILIPS ELECTRONICS (THAILAND) Ltd.,
60/14 MOO 11, Bangna - Trad Road Km. 3
Prakanong, BANGKOK 10260,
Tel. (2)399-3280 to 9, (2)398-2083, Fax. (2)398-2080

Turkey: Talatpasa Cad. No. 5, 80640 LEVENT/ISTANBUL,
Tel. (0212)279 2770, Fax. (0212)269 3094

United Kingdom: Philips Semiconductors Limited, P.O. Box 65,
Philips House, Torrington Place, LONDON, WC1E 7HD,
Tel. (071)436 41 44, Fax. (071)323 03 42

United States: INTEGRATED CIRCUITS:
811 East Arques Avenue, SUNNYVALE, CA 94088-3409,
Tel. (800)234-7381, Fax. (708)296-8556
DISCRETE SEMICONDUCTORS: 2001 West Blue Heron Blvd.,
P.O. Box 10330, RIVIERA BEACH, FLORIDA 33404,
Tel. (800)447-3762 and (407)881-3200, Fax. (407)881-3300

Uruguay: Coronel Mora 433, MONTEVIDEO,
Tel. (02)70-4044, Fax. (02)92 0601

For all other countries apply to: Philips Semiconductors,
International Marketing and Sales, Building BAF-1,
P.O. Box 218, 5600 MD, EINDHOVEN, The Netherlands,
Telex 35000 phicnl, Fax. +31-40-724825

SCD26 © Philips Electronics N.V. 1993

All rights are reserved. Reproduction in whole or in part is prohibited without the prior written consent of the copyright owner.

The information presented in this document does not form part of any quotation or contract, is believed to be accurate and reliable and may be changed without notice. No liability will be accepted by the publisher for any consequence of its use. Publication thereof does not convey nor imply any license under patent- or other industrial or intellectual property rights.

Printed in The Netherlands

9397 725 30011

Philips Semiconductors



12

PHILIPS

39569