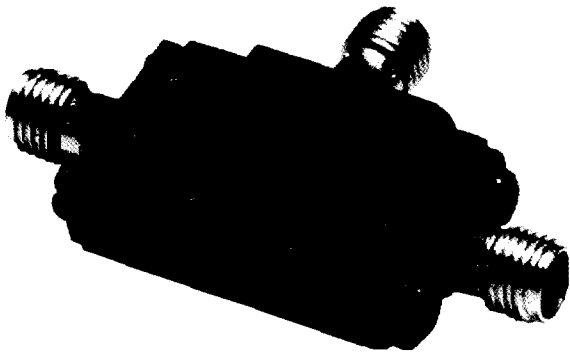
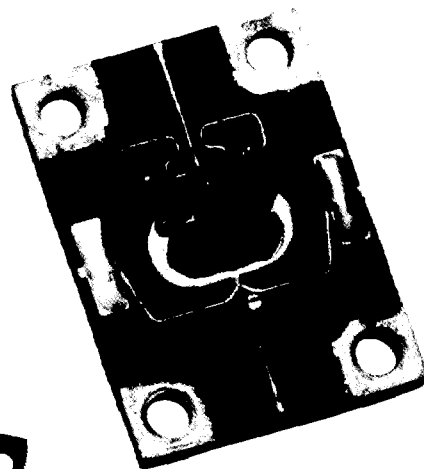


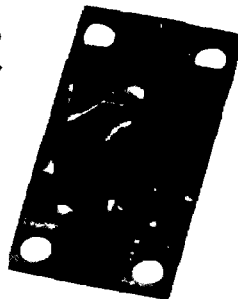
• *Performance
Engineered*



*Exceptional
Reliability*



• *Built-In*



*Pulsar Microwave
Corporation*

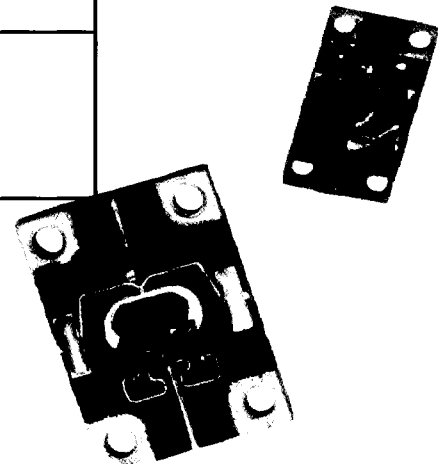


★PMWVS00001★

Frequency Range LO/RF (GHz)	IF (GHz)	Conversion Loss (dB)		L/R Isolation (dB)		L/I Isolation (dB)		P/N
		typ.	max.	typ.	min.	typ.	min.	
6.0 - 18.0	DC - 1.0	6.0	7.5	25	20	20	20	M*-01-S
	DC - 2.0	6.5	8.0	20	20	20	20	
4.0 - 8.0	DC - 1.0	6.0	7.0	40	35	35	30	M*-02-S
	DC - 2.0	6.5	7.5	40	35	35	30	
3.0 - 9.0	DC - 1.0	6.0	7.0	30	25	25	18	M*-03-S
	DC - 2.0	6.5	7.5	30	25	25	18	
2.0 - 8.0	DC - 1.0	6.0	7.5	30	25	25	20	M*-04-L
	DC - 2.0	6.5	8.0	30	25	25	20	
5.0 - 7.0	DC - 1.0	5.0	6.0	45	40	35	30	M*-06-S

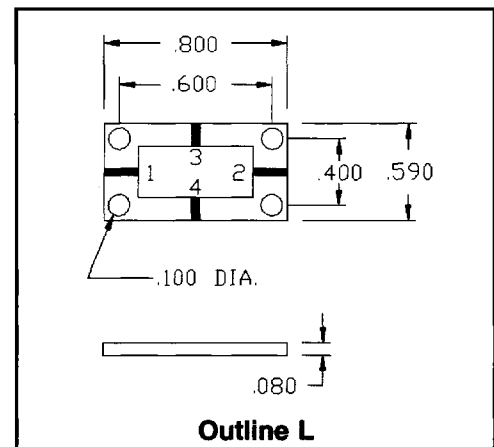
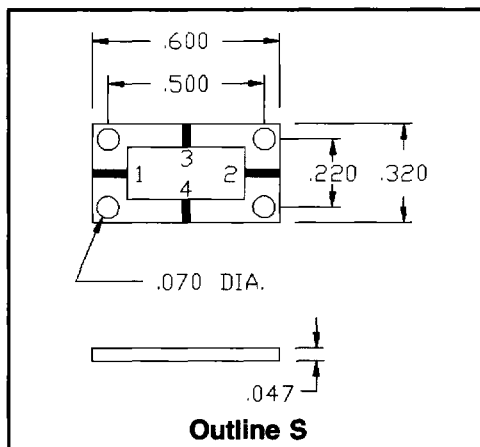
***LO Drive Levels**

LO Drive Level	1 dB Comp. Pt.	P/N
+7 dBm	+1 dBm	L
+10 dBm	+4 dBm	M
+13 dBm	+7 dBm	T
+17 dBm	+10 dBm	H



Pin-out Table

Outline	RF	LO	IF
S	2	1	3
L	2	1	3



HIGH FREQUENCY MIXERS

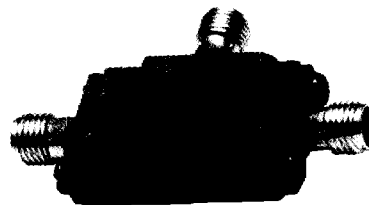
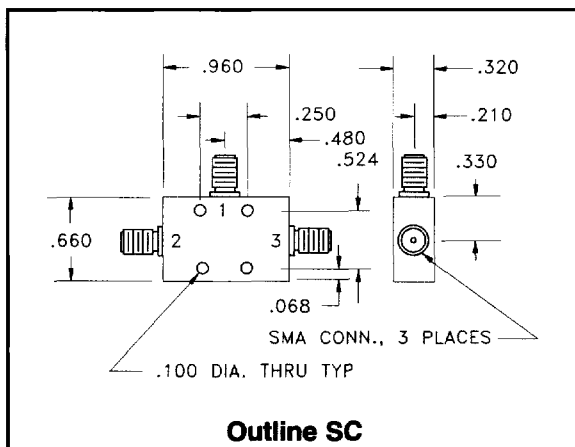
Frequency Range LO/RF (GHz)	IF (GHz)	Conversion Loss (dB)		L/R Isolation (dB)		L/I Isolation (dB)		P/N
		typ.	max.	typ.	min.	typ.	min.	
6.0 - 18.0	DC - 1.0	6.0	7.5	25	20	20	20	M*-01-SC
	DC - 2.0	6.5	8.0	20	20	20	20	
4.0 - 8.0	DC - 1.0	6.0	7.0	40	35	35	30	M*-02-SC
	DC - 2.0	6.5	7.5	40	35	35	30	
3.0 - 9.0	DC - 1.0	6.0	7.0	30	25	25	18	M*-03-SC
	DC - 2.0	6.5	7.5	30	25	25	18	
5.0 - 7.0	DC - 1.0	5.0	6.0	45	40	35	30	M*-06-SC

*LO Drive Levels

LO Drive Level	1 dB Comp. Pt.	P/N
+7 dBm	+1 dBm	L
+10 dBm	+4 dBm	M
+13 dBm	+7 dBm	T
+17 dBm	+10 dBm	H

Pin-out Table

Outline	RF	LO	IF
SC	3	2	1



Also Offers a Complete Line of:

- **Mixers (including High IP³ Mixers)**
- **Power Dividers**
- **Couplers**
- **Bias Tees**
- **Modulators/Demodulators**
- **Image Reject Mixers**
- **90° & 180° Hybrids**
- **Phase Shifters**
- **Frequency Doublers**
- **RF Transformers**
- **Attenuator/Switches**

— Covering Bands from DC to 18 GHz —

Available in Various Package Styles:

- *Surface Mount*
- *Plug-in*
- *Flat-pack*
- *SMA, BNC, N Connectors*

Pulsar Microwave Corporation
