

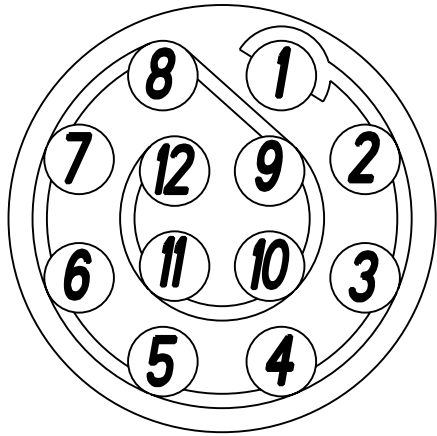
4

3

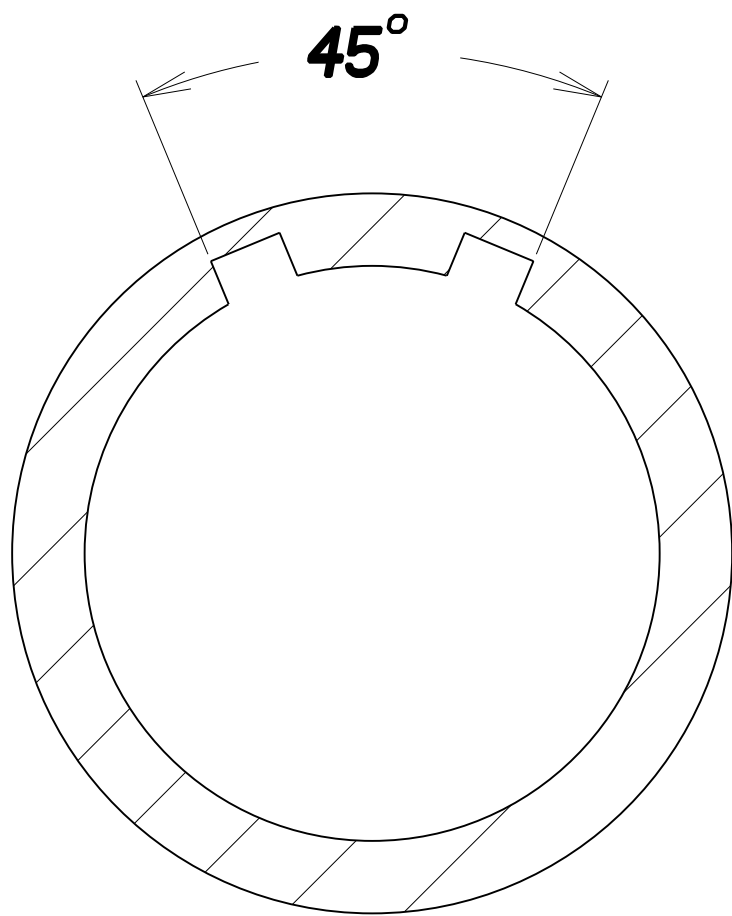
2

1

**Insulator**  
**Viewed from wiring side**

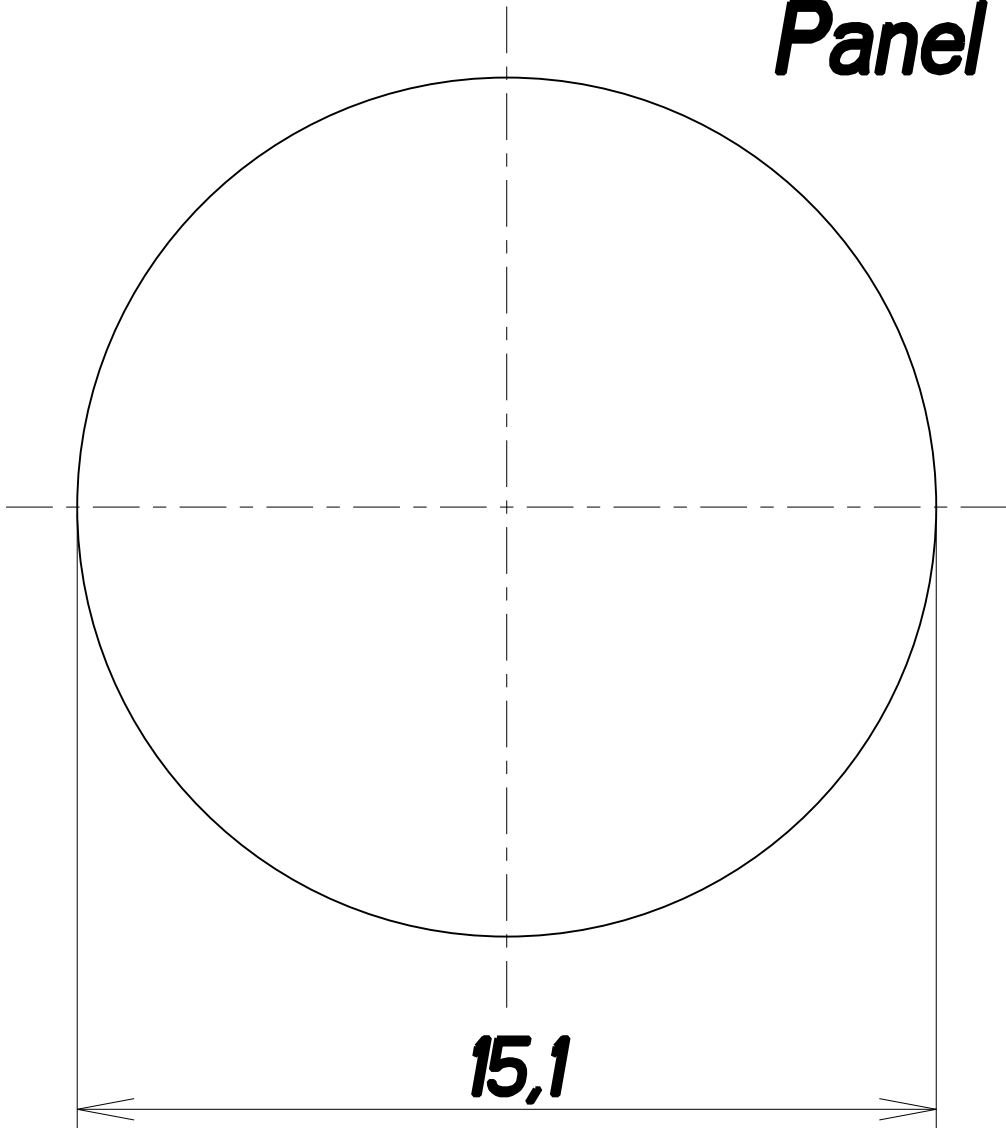


**12 sockets x 0.7 mm**

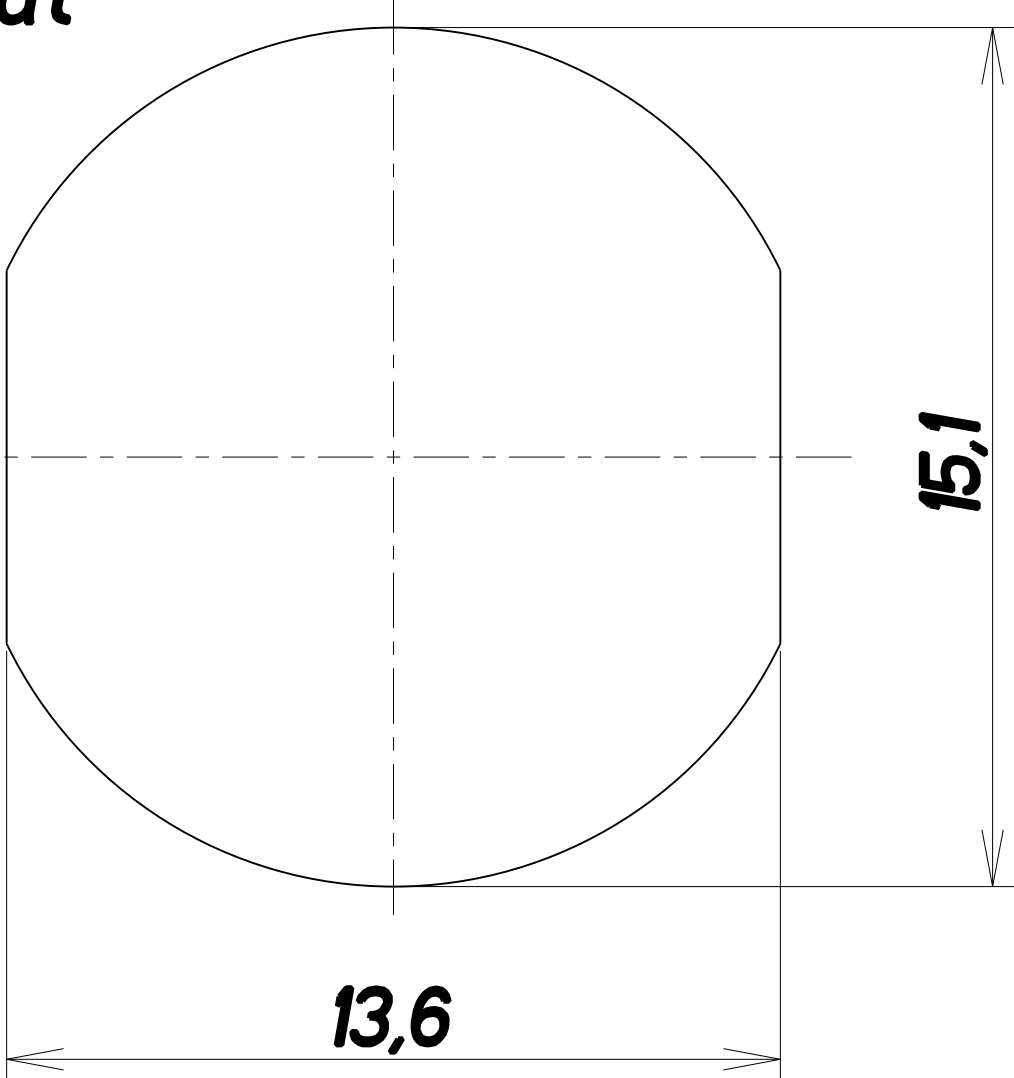


**Keying**

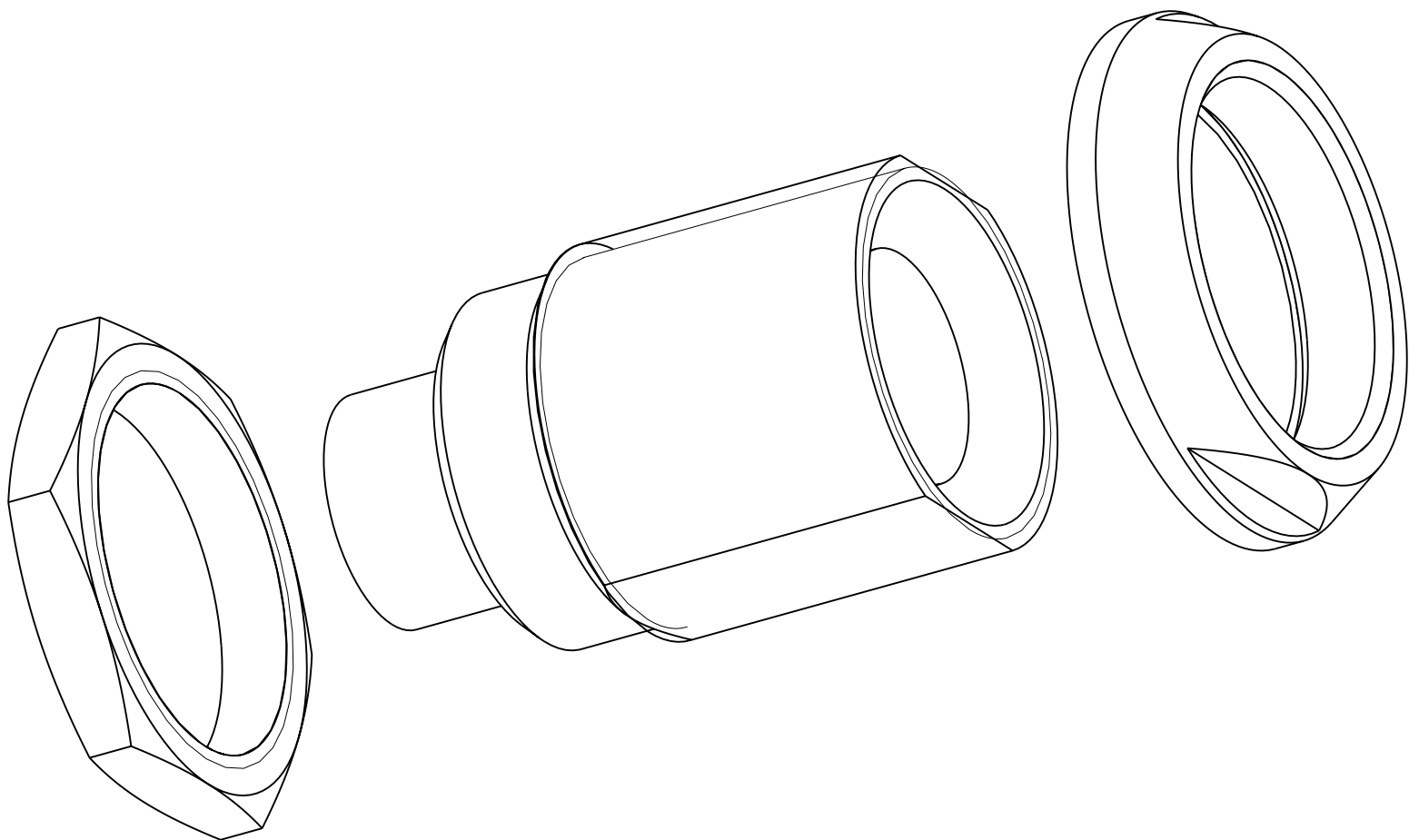
**Panel cut-out**



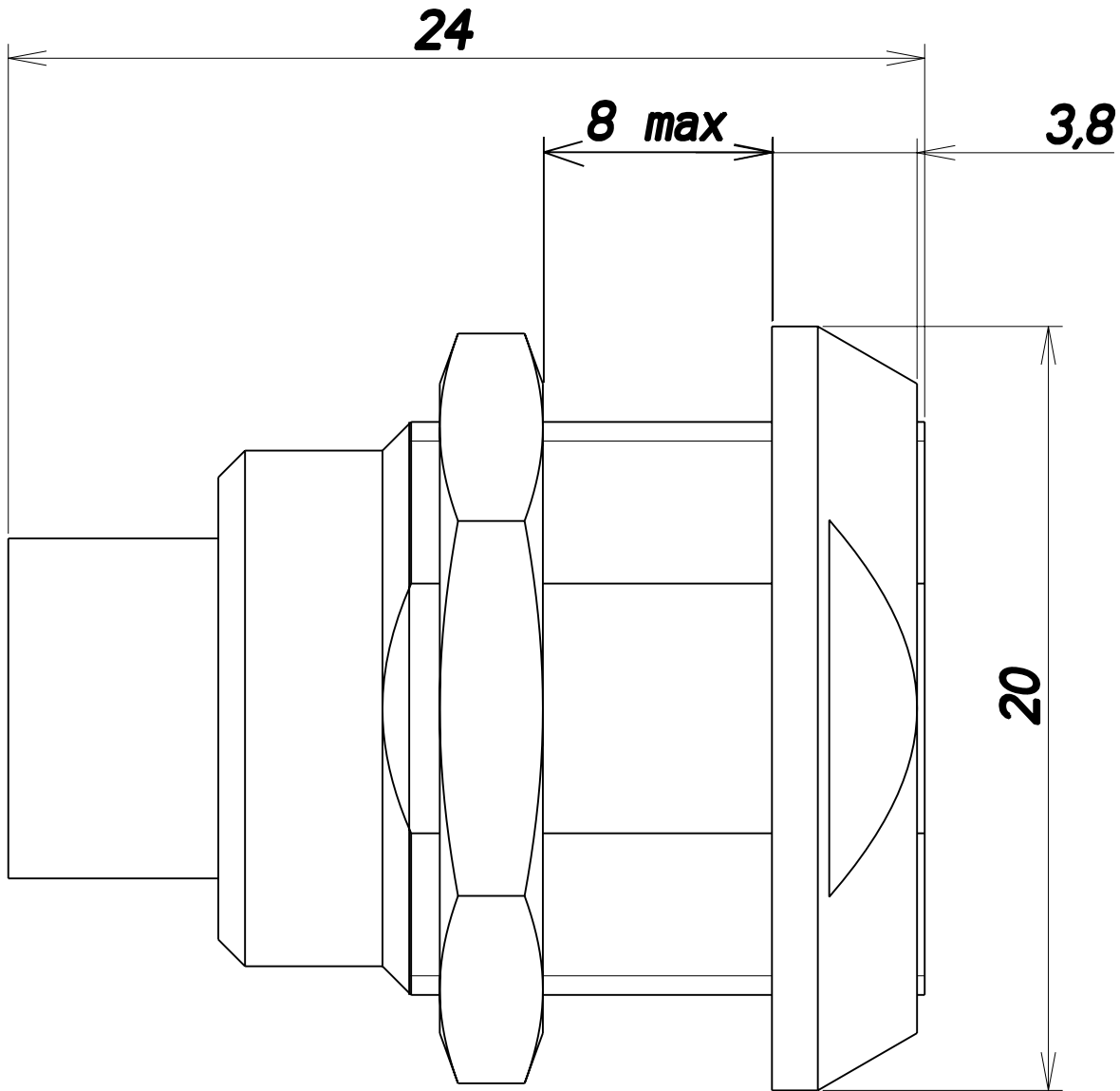
**15,1**



**13,6**



**Dimensions**  
**(mm)**



**DOUBLE NUT RECEPTACLE size 2**

ANY CHANGES TO THIS DRAWING WILL AFFECT DIMENSIONAL ANALYSIS, DATA DRAWING LE X		DRAWING TITLE	
LINEAR MEASURE: $\frac{mm}{INCH}$ mm (inch)		DOUBLE NUT RECEPTACLE SIZE 2	
THIRD ANGLE PROJECTION		CAT NO. JBX-EA-2B-12-FC-SDS	
TOLERANCES UNLESS OTHERWISE SPECIFIED		DWG RELEASED TO CENTRAL FILE: X	
No. OF PLACES		CAGE NO: --	
ONE PLACE		DON: --	
TWO PLACES		PC:--	
THREE PLACES		SIZE: C	
ANGLES: $\pm 1^\circ$		DRAWN: JAB 12-12-00	
FCI INTERCONNECTIONS		CHKD: RC 12-12-00	
www.fciconnect.com		DSGN: -- --	
1 OF 1		MFG: -- --	
		QC: -- --	
		DRAWING SCALE: 4/1	
		DRAWING NO. REV	
		JBX-EA-2B-12-FC-SDS 0	